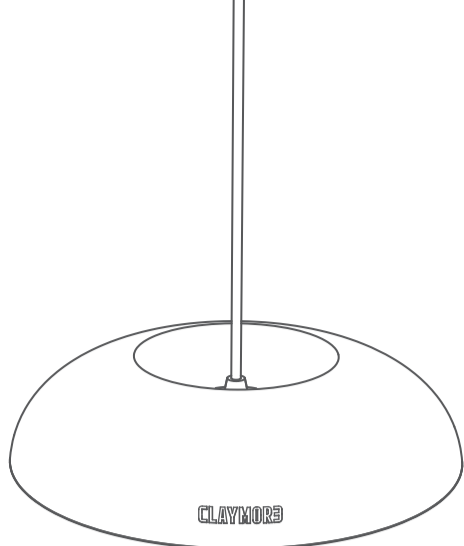


CLAYMORE medal

CLAYMORE Medal

CLME-01



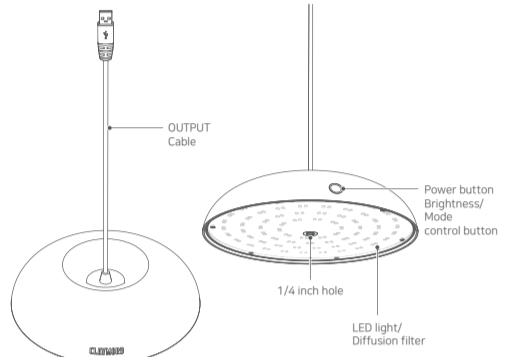
User Manual

This product is a portable lighting fixture that is used by connecting to a product with a power bank function. Please follow the user manual before use. If any abnormality is found in the product, discontinue use and contact the dealer or a service center where the product was purchased.

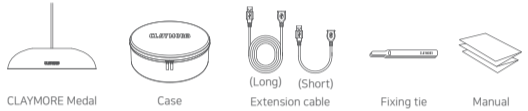
⚠ Caution

- ① Do not use near high temperatures such as fires or heating equipments. It may cause explosion or ignition.
- ② Be careful not to leave this product in the rain for a long time or submerge it in water. It may cause electric shock or product malfunction.
- ③ Do not store or use in vehicles exposed to direct sunlight. It may cause explosion and malfunction.
- ④ Do not use if it exceeds the operating temperature range (-10 °C to 40 °C).
- ⑤ Please do not place in the reach of infants. It may cause swallowing of parts or injury.
- ⑥ Adult supervision is necessary when used by children. Misuse of light may cause injury or electric shock.
- ⑦ Do not insert any metal parts into the terminal block of the connector. It may cause heat, explosion or electric shock.
- ⑧ Do not disassemble or modify the product.
- ⑨ Do not touch the connector with wet hands. There is a danger of electric shock.
- ⑩ After use, be sure to turn off the power.
- ⑪ Do not forcefully fold. It may damage the product.
- ⑫ If the product is dropped or experiences physical shock, damage may be accumulated inside the product and unexpected malfunction may occur even during normal use. Be careful not to apply physical shocks to the main unit.
- ⑬ Please keep in a dry place without moisture.

1. Components



2. Contents

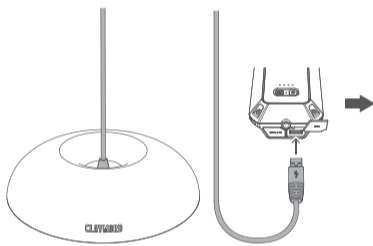


⚠ When you connect power supply (CLAYMORE/Portable charger/USB adapter) to Medal, please attach short external cable in middle.
 ※ Charging adapter: over 5V 2A

3. Operation

● Connecting to MULTI FACE

Connect OUTPUT connection cable of the medal to OUTPUT port on the left or right side of MULTI FACE. Attach long extension cable to increase the usable distance.



※ If you don't use connecting accessories, turn off the power button to reduce unnecessary standby power consumption. (status indicator OFF)

ON/OFF

2s

1x

Press and hold button on MULTI FACE 2sec to turn on light of Medal. (Status indicator ON). Repeat to turn off light. When power is ON, press the power button on Medal to turn ON/OFF.

Stepless Dimming

Press and hold

When light is ON, press and hold power button on Medal to increase the brightness. Press and hold again to decrease the brightness. Or press button on MULTI FACE shortly to adjust the brightness in 5 steps. ※ Light blinks once when Maximum and Minimum brightness is reached.

5 STEP Dimming

1x

When light is ON, press the power button on Medal twice or press button on MULTI FACE shortly to change the light color in 4 steps. : Cool -> Warm -> White -> Breeze

LED Color Change

2x

When light is ON, press the power button on Medal twice or press button on MULTI FACE shortly to change the light color in 4 steps. : Cool -> Warm -> White -> Breeze

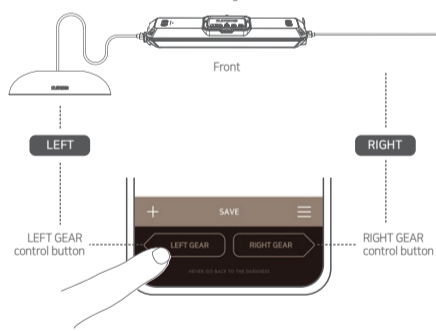
Cool	LED light with 6500K, cool light feels like ordinary fluorescent light
Warm	LED light with 3000K, warm light feels like ordinary gas lantern
White	LED light with 4500K, a neutral color of daylight and comfortable feeling
Breeze	The light swaying in the softly blowing wind

with CLAYMORE App

You can control the lighting by using Claymore app.
 ▶ Check the app manual to install and register.

● How to use the app

App control is divided into "LEFT GEAR" and "RIGHT GEAR" depending on the left/right position of the product connected to MULTI FACE. Select the button at the bottom according to the connected direction.



- ① Press the side gear ON/OFF button to turn on the connected device, and ② select the type (lighting).
- ③ By dragging the brightness control bar, you can adjust the brightness in 20 steps.
- ④ You can change light mode by pressing the light mode setting button.
- ※ It is not possible to adjust the brightness in Breeze mode when using the app.

Side type choice ②

Brightness control bar (1 ~ 20 steps) ③

Brightness level status display ④

Light mode setting button ⑤

Mode 1	Cool
Mode 2	Warm
Mode 3	White
Mode 4	Breeze

① Side gear (Medal) ON/OFF button

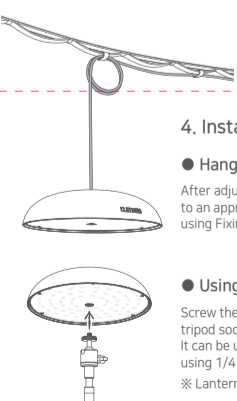
Selected: LEFT GEAR

Not selected: LEFT GEAR

● Connecting to Portable charger

Without MULTI FACE, Medal can be used by connecting to CLAYMORE (with power bank), Portable charger or USB adapter (Over 5V2A).

- ※ Bluetooth (CLAYMORE App) control is NOT possible.
- ※ When you connect power supply (CLAYMORE/Portable charger/USB adapter) to medal, please attach short external cable in middle.



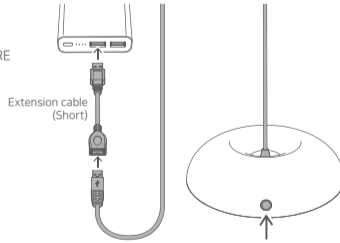
4. Installation

● Hanging from the ceiling

After adjusting the OUTPUT connection cable of Medal to an appropriate height, hang it from the ceiling by using Fixing tie or Carabiner.

● Using tripod socket

Screw the camera tripod or lantern stand into the 1/4 inch tripod socket and fix it. It can be used in various ways by connecting to all products using 1/4 inch screws.
 ※ Lantern stand is not included.



ON/OFF

When power is ON, press the button shortly to turn on light. Repeat to turn off light.

Stepless Dimming

When light is ON, press the button to increase brightness. Repeat to decrease brightness.
 ※ Light blinks once when Maximum and Minimum brightness is reached.

LED Color Change

When light is ON, press the button twice to change the light color in 4 steps. : Cool -> Warm -> White -> Breeze

Warranty

Item	CLAYMORE Medal
Model No.	CLME-01
Seller	
Date of Purchase	

- 1. Thank you for purchasing CLAYMORE series of Prism Co., Ltd.
- 2. This product has passed strict quality control tests. If the product is not functioning properly, please contact an authorized service center.

Free Service

- 1) Failure of the product under normal operating conditions during the warranty period will be repaired by Prism or authorized service center on free of charge. Some shipping or handling charges may be involved.
- 2) Warranty period: 1 year.

Charged Service

- 1) Damage caused when the warranty period is over.
- 2) Damage caused due to the user's mishandling, abuse, or improper operation.
- 3) Damage caused by arbitrary or personal repair or disassemble in unauthorized service center.
- 4) Damage from input electricity or cable defect.
- 5) Damage caused by natural disaster.

CLAYMORE

Prism Co., Ltd.

221, Pyeongcheon-ro, Bupyeong-gu, Incheon, Republic of Korea
 www.claymorelight.com · www.prismlight.co.kr · info@prismlight.co.kr

5. Specification

Product name	CLAYMORE Medal	Model No.	CLME-01
Input	USB 5V 2A	Size	215x50mm
Brightness	170~2,400Lm	Weight	410g
Color temperature	Cool: 6500K - Warm: 3000K - White: 4500K - Breeze: 3000K~6500K		

Designed by Prism in Korea / Made in China

* Connecting to MULTI FACE

	MULTI FACE OFF + Medal ON	MULTI FACE ON + Medal ON	
	Connecting to MULTI FACE L	Connecting to MULTI FACE X	Connecting to MULTI FACE L
Run time	8.5hrs ~ 25hrs	11hrs ~ 35hrs	3.5hrs ~ 20hrs
			4.5hrs ~ 25hrs

※ Operating time may vary depending on the battery capacity and external environment.