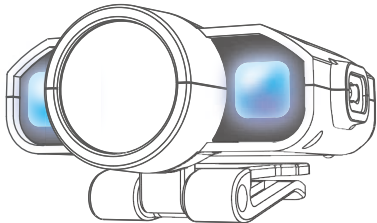


CLAYMORE Cap on



User Manual

CLAYMORE Cap on 120D UV CLPUV-120

This portable light contains Li-Polymer batteries. Please follow the user manual before use. If any abnormality is found in the product, discontinue use and contact the dealer or a service center where the product was purchased. Any modifications of this product will void the warranty. Misuse of CLAYMORE products may cause user harm.

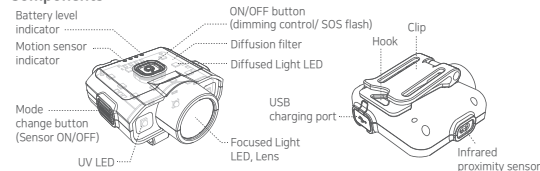
Caution

- ① Do not use near high temperatures such as fires or heating equipments. It may cause explosion and ignition.
- ② This product is water resistant. However, if left in the rain for a long time, it may cause malfunction. If the product gets soaked, please quickly wipe it off.
- ③ Do not store or use in vehicles exposed to direct sunlight. It may cause explosion and malfunction.
- ④ Do not touch the light source directly as it may become very hot during use.
- ⑤ Do not use if the product exceeds the operating temperature range (-10°C to 40°C).
- ⑥ Do not look directly into the LED light source.
- ⑦ Please do not place in the reach of infants. It may cause swallowing of parts or injury.
- ⑧ Adult supervision is necessary when used by children. Misuse of head lamp may cause injury or electric shock.
- ⑨ Do not insert any metal parts into the terminal block of the connector. It may cause heat, explosion or electric shock.
- ⑩ Do not disassemble or modify the product.
- ⑪ Do not touch the connector with wet hands. There is a danger of electric shock.
- ⑫ After use, be sure to turn off the power. If not, it may cause leakage.
- ⑬ When adjusting the angle, please do not bend with force. It may cause damage to the product.
- ⑭ Dropping or impacting the product can cause damage to the inside of the product, resulting in unexpected failures in normal use. Be careful not to apply impact to the body.
- ⑮ Be careful not to expose your eyes and skin to UV light for a long time, it may cause damage.

Caution for long-term storage

- * To prevent false sensor detection, turn off sensor when storing after use.
- * If the battery is completely drained, the battery indicator might not flash.
- * If this happens, plug the USB cable back in or press the button to turn the battery indicator on again.
- * For long-term storage, fully recharge the battery. (Repeat every six months)
- * Please keep in mind that if stored below -10°C the battery life may be affected.
- * Please keep in a dry place without moisture.

Components



Operation

ON/OFF



Press **ON/OFF** shortly to turn on light.
Repeat to turn off light.

Stepless Dimming



When light is ON, press and hold **Stepless Dimming** button to increase brightness. Repeat to decrease brightness.

※ Light blink once when Maximum and Minimum brightness is reached.

5 STEP Dimming



Hold down **5 STEP Dimming** button and press **MODE** button to sequence to adjust brightness in 5 steps.

Mode Change



When light is ON, press **Mode Change** button shortly to change
※ 3 different light modes (Focused>UV>Diffused)



SOS-Flash



When light is OFF, press **SOS-Flash** button over 2seconds to access SOS signal.

[Sensor Mode]



When light is ON or OFF, press **Sensor Mode** button over 2 seconds to activate Sensor Mode. Repeat to inactivate Sensor Mode.

Sensor mode automatic OFF function

To reduce unnecessary power consumption, the sensor mode will automatically turn off after 2hours when there is no movement.

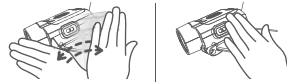
Power automatic OFF function

If a human body or object continues to be close to the sensor over 20 seconds, the power is turned off to prevent overheating.

To prevent false sensor detection, turn off the sensor when storing after use.

△ The sensor may not work under sunlight or in very bright places.

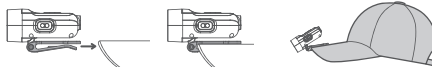
※ While sensor operating, sensor indicator will flash. Detection distances range: 5cm



Instructions

● Attaching to a Cap & Hard Hat

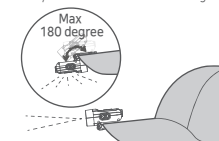
Fully insert clip to the visor of the cap/hard hat and adjust angle to use properly.



※ Please check if the clip is fully attached to cap bill before use.

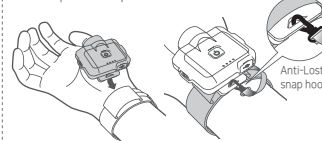
● Angle adjustment

Able to adjust up to 180 degree and easy to use focused and diffused light.



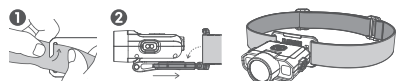
● Wrist strap

Wear accessory strap on your wrist, insert clip into strap. Secure clip with a snap hook.



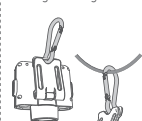
● Wearable kit (Using as Head lantern & Clip lantern)

[Head band] Attach the headband to the hook of the bracket. Fully insert visor clip of "Cap On" into bracket. (Angle adjustable)

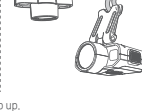
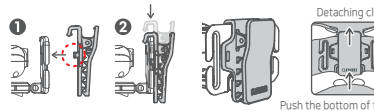


● Lantern Hook

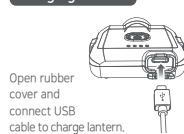
Compatible with carabiner or hang on string with hook.



[Alligator clip] Insert the alligator clip into the hook of the bracket until it clicks into place. Alligator clip attaches easily to backpack, cloths, straps, etc.

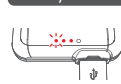


Charging Method



Open rubber cover and connect USB cable to charge lantern.

Battery Level Check



When charging, battery indicator will flicker in 3 steps to show battery remaining. (To see remaining battery, press **ON/OFF** button)

Battery level indicator	
•••••	0-33%
••••	33-66%
•••	66-99%
•••••	Fully charged

Flickers
Stop

※ This lantern contains memory function that returns to the last setting when turn off and on.

Specification

	Focused Light		UV light		Diffused light(Cool)	
	MIN	MAX	MIN	MAX	MIN	MAX
Brightness	25Lm	380Lm	2Lm	4Lm	25Lm	340Lm
Operating time	45hour	3hour	13hour	2hour	45hour	3hour
Distance	4m	100m				

Product name	CLAYMORE Cap on 120D UV	Size	54x57.3x33.7mm
Model No.	CLPUV-120	Weight	56g
Battery capacity	Li-Polymer 3.7V 1,200mAh(4.44Wh)	Charging time	2hour
Color temperature	Cool : 5700K	Input	USB 5V 1A
UV LED	UV-A	Origin	MADE IN KOREA

Contents



Warranty

Item	CLAYMORE Cap on 120D UV
Model No.	CLPUV-120
Seller	
Date of Purchase	

1. Thank you for purchasing CLAYMORE series of Prism Co., Ltd.
2. This product has passed strict quality control tests. If the product is not functioning properly, please contact an authorized service center.

Free Service

- 1) Failure of the product under normal operating conditions during the warranty period will be repaired by Prism or authorized service center on free of charge. Some shipping or handling charges may be involved.
- 2) Warranty period: 1 year.

Charged Service

- 1) Damage caused when the warranty period is over.
- 2) Damage caused due to the user's mishandling, abuse, or improper operation.
- 3) Damage caused by arbitrary or personal repair or disassemble in unauthorized service center.
- 4) Damage from input electricity or cable defect.
- 5) Damage caused by natural disaster.

CLAYMORE

Prism Co., Ltd.

221, Pyeongcheon-ro, Bupyeong-gu, Incheon, Republic of Korea
www.claymorelight.com · www.prismlight.co.kr · info@prismlight.co.kr