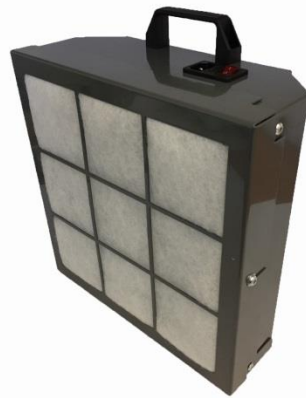


# THOR FILTRATION

## TF810



### Specification

The TF810 Air Filter is perfect for a double garage size workshop with volume up to a maximum of 76 cubic meters.

This unit is designed for table top extraction.

1 x Media included    1 x Plug included

Height: 300mm (not including handle), Length: 300mm, Width: 120mm, Weight: 6kg approx.

Motor: 90w, 240v    Flow Rate: 760m<sup>3</sup>/H    Max. Workshop size: 76m<sup>3</sup>

Filtration Efficiency: 95% @ 2 micron    80% @ 1 micron    65% @ 0.4 micron

EU4 Standard G4 Filter Media

Spare media packs available: TF.M810 Media

### How to change the media?

Simply loosen the 2 x M6 Alan head bolt on either side of the front inlet grill to slide off and release media. Replace with new media and tighten bolts to hold front inlet grill back into position on the filter unit.

### When to change the media?

With a clean media fitted, run the filter and place a sheet of plain printer paper across the face of the filter inlet to block it completely. Switch off the motor and time how long it takes for the paper sheet to fall away from the filter inlet and make a note of this time period. Repeat the process at weekly intervals, recording the revised time. When the paper is held in contact for approximately half the original time, then it is a suitable time to replace the filter media.

### Safety

Only change media when unit is fully unplugged, and motor is not spinning.

Do not remove top and bottom covers (4x screws & socket), to avoid electrical and moving components.

Do not insert fingers through filter unit holes.

1 Year Warranty. Keep receipt of item for proof.