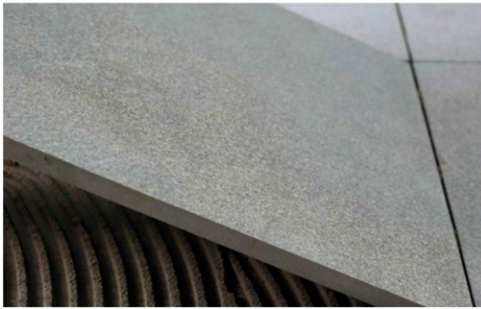


■ INSTALLATION METHODS

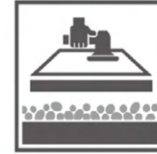
ENMON 2CM OUTDOOR PORCELAIN PAVERS ARE VERSATILE IN THEIR INSTALLATION METHODS TO SUIT ANY APPLICATION.



ADHERING TO SUBSTRATE



LAYING IN GRASS



LAYING OVER GRAVEL



LAYING IN SAND



RAISED FLOOR WITH PEDESTALS

ADHERING TO SUBSTRATE



INSTALLATION GUIDE:

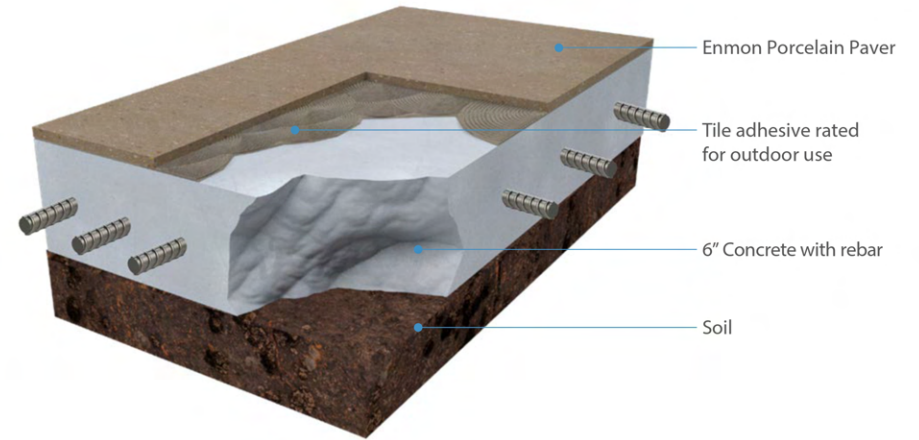
Remove top soil to achieve desired depth. Roughly level the area.

Pour concrete mix to achieve a 6" thickness and reinforce with rebar. Allow to dry.

Clean the concrete surface and check that the entire area is dry and flat. Apply an adhesive (rated for outdoor use) evenly to substrate and to the back of the porcelain paver using proper tools and technique.

Place the Enmon porcelain paver and tap lightly with a rubber mallet to bleed air and ensure full adhesion. Ensure a minimum of 1/8" gap between tiles is maintained using the appropriate spacers.

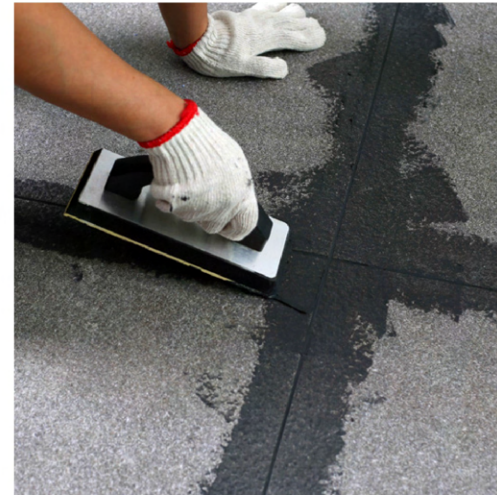
Once the adhesive has dried, remove the spacers. Grout the joints and thoroughly clean to remove any residue on tiles.



Simulated diagrams and installation guides are for reference only. Please analyze the unique requirements of each application and/or consult a professional to adhere to technical standards.



56



57

LAYING IN GRASS



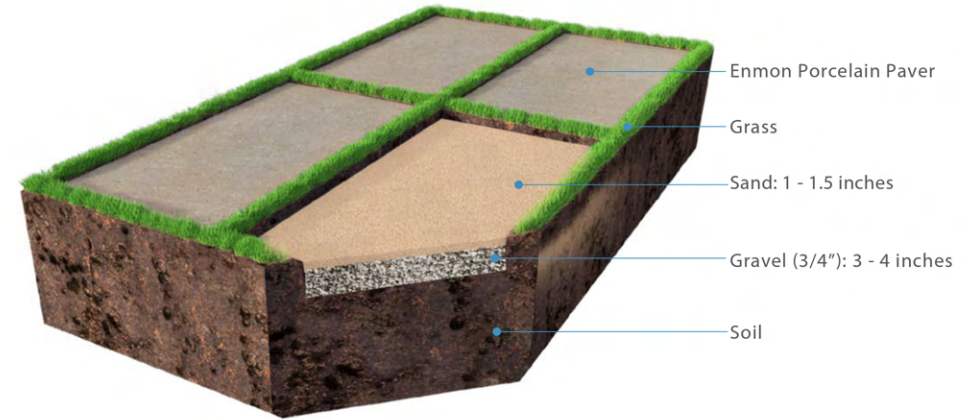
INSTALLATION GUIDE:

Place Enmon porcelain pavers on the grass and check that the gap between them is the same over the entire laying area.

Mark out the area of turf to be removed and dig out a depth of at least 5 inches. Create a layer of at least 3 inches of gravel (diam. 3/4"). Compact and level the gravel.

Lay sand in a layer at least 1 inch deep until the space left between this layer and the surface of the ground is 2cm (thickness of the tile). Compact and level the sand.

Put the Enmon porcelain paver in place and tap down gently with a rubber mallet to settle them into place and correct any unevenness.



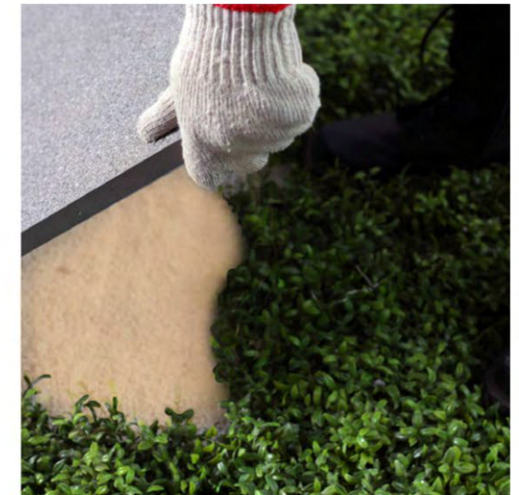
Simulated diagrams and installation guides are for reference only. Please analyze the unique requirements of each application and/or consult a professional to adhere to technical standards.



58



59



LAYING OVER GRAVEL

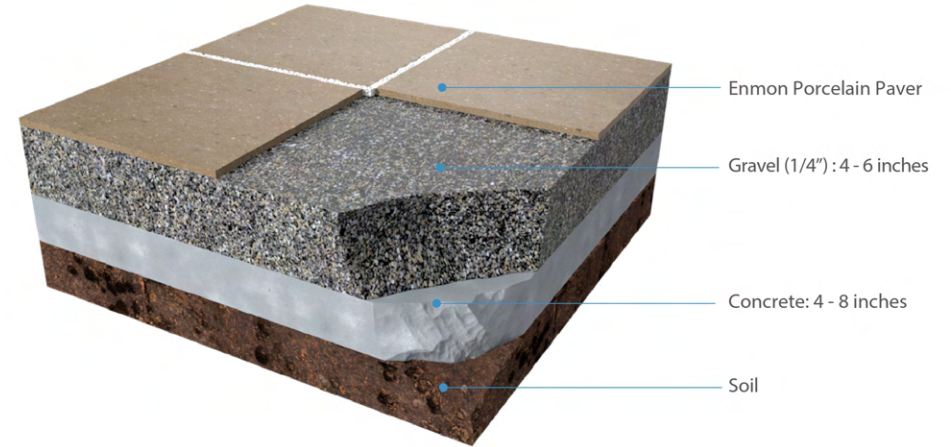


INSTALLATION GUIDE:

Create a layer of at least 4 inches of gravel with a diameter of 1/4" on the existing substrate. Compact the gravel and level the surface with a straightedge and check for even flatness.

Place the Enmon porcelain paver on the gravel and check that the gap between them is the same over the entire laying surface. Tap down gently with a rubber mallet to settle them into place and eliminate any unevenness.

Add gravel in the joints to level the paving. Decorative gravel that is larger in diameter can be used instead of what was used for substrate.



Simulated diagrams and installation guides are for reference only. Please analyze the unique requirements of each application and/or consult a professional to adhere to technical standards.



60



61



LAYING IN SAND



INSTALLATION GUIDE:

Remove at least 6 - 8 inches of topsoil.

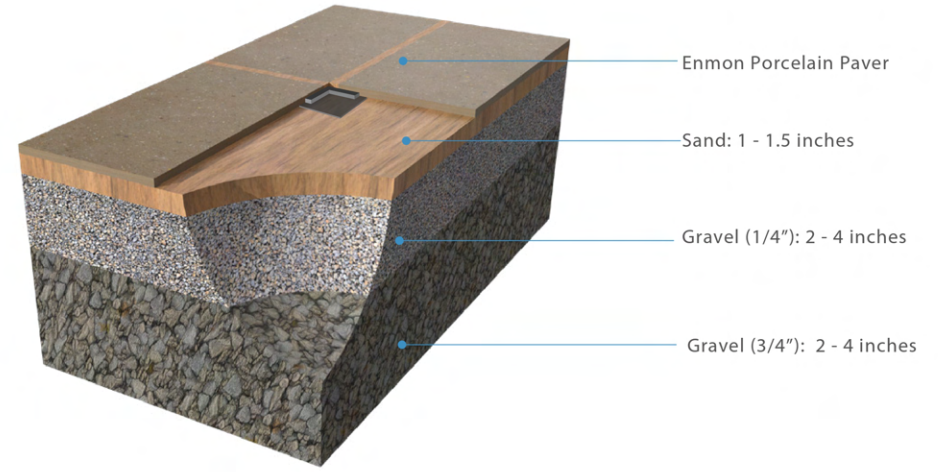
Lay 2-4 inches of 3/4" gravel. Compact and level. Lay 2-4 inches of 1/4" gravel. Compact and level.

Prepare a layer of sand at least 1 inch thick on the existing substrate. Level the surface with a straightedge and check for even flatness.

Place the Enmon porcelain pavers on the sand and use spacers (minimum size 3.5 mm) to ensure an even gap over the entire laying surface.

Tap down gently with a rubber mallet to settle the pavers into place.

Add sand in the joints to level the paving.
Clean the surface of the slabs.



Simulated diagrams and installation guides are for reference only.
Please analyze the unique requirements of each application
and/or consult a professional to adhere to technical standards.



62



63

RAISED FLOORS WITH PEDESTALS



INSTALLATION GUIDE:

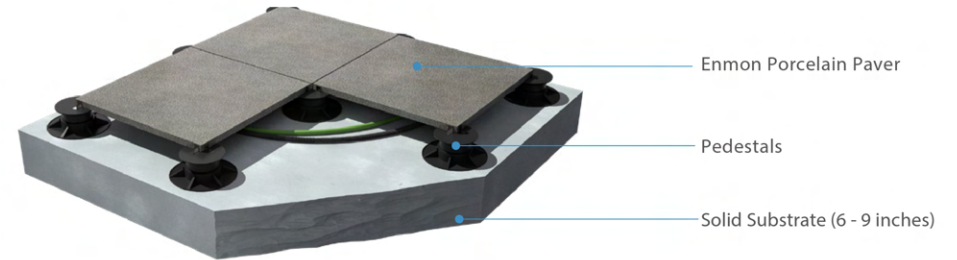
Clean the existing surface and check that the solid substrate is level to the right type of pedestal. If substrate is concrete it must be dry and cured.

Prepare the chosen pedestals, cutting the ones around the edge to size and removing any unwanted "wings".

Arrange the grid of pedestals in accordance with the laying diagram, starting with those around the edge. If there is a slope you can use Enmon plastic slope correctors or shims.

Fit the protective edge clips on the pedestals against any wall. Lay the porcelain tile on the pedestals.

Pedestals should be placed every two feet regardless of the size of slab. In addition to placing slabs in all 4 corners, add a pedestal in the middle of a slab, removing spacer wings if heavy loads are expected.

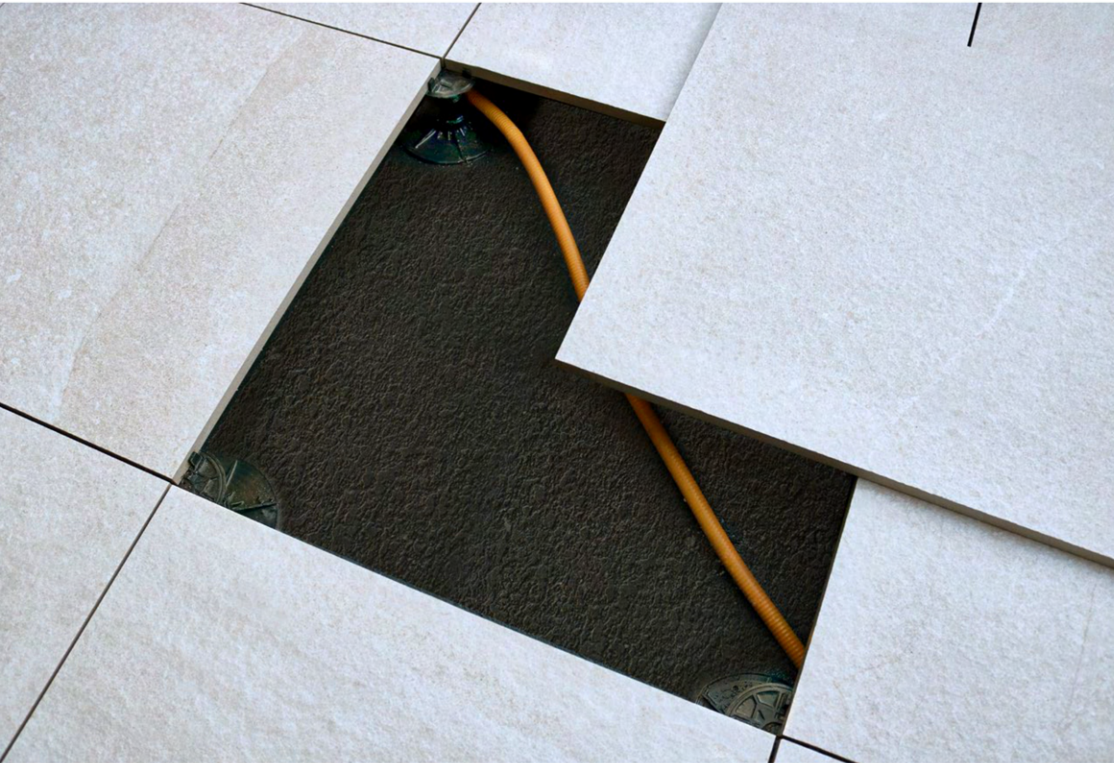


Simulated diagrams and installation guides are for reference only. Please analyze the unique requirements of each application and/or consult a professional to adhere to technical standards.



BENEFITS OF RAISED FLOORS

The raised access flooring installation system uses pedestals to provide easy access to the area underneath as well as improve drainage. This innovative flooring system is also ideal for applications that have uneven terrains or need to quickly and easily repair single pieces of the flooring. This system offers a more cost effective alternative to traditional decking and is more durable.

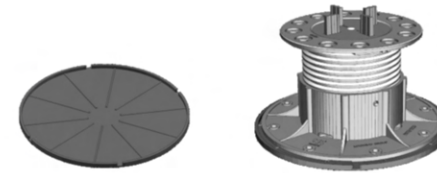


DECK INSTALLATION USING RAISED FLOOR / PEDESTAL DRAINAGE SYSTEM

ADJUSTABLE PEDESTALS



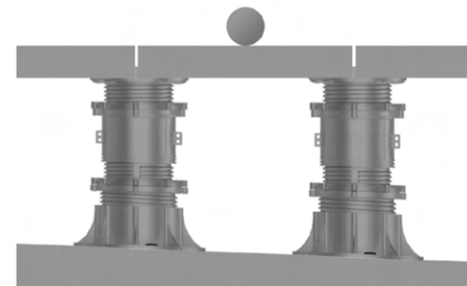
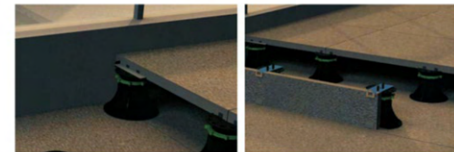
Adjustable plastic pedestals are high strength, light weight and easy to install. Pedestals support indoor & outdoor uses with various kinds of materials including wood decking, WPB decking, stone, ceramic, composite material, metal, fibreglass, and more. They can be placed over stable substrate or insulation panels.



BASE RUBBER PADS
ANTI-NOISE UP TO 25DB



WALLSIDE BUFFER & SIDE CLOSURE
STEEL CLIPS



SLOPE CORRECTION
0% - 5%