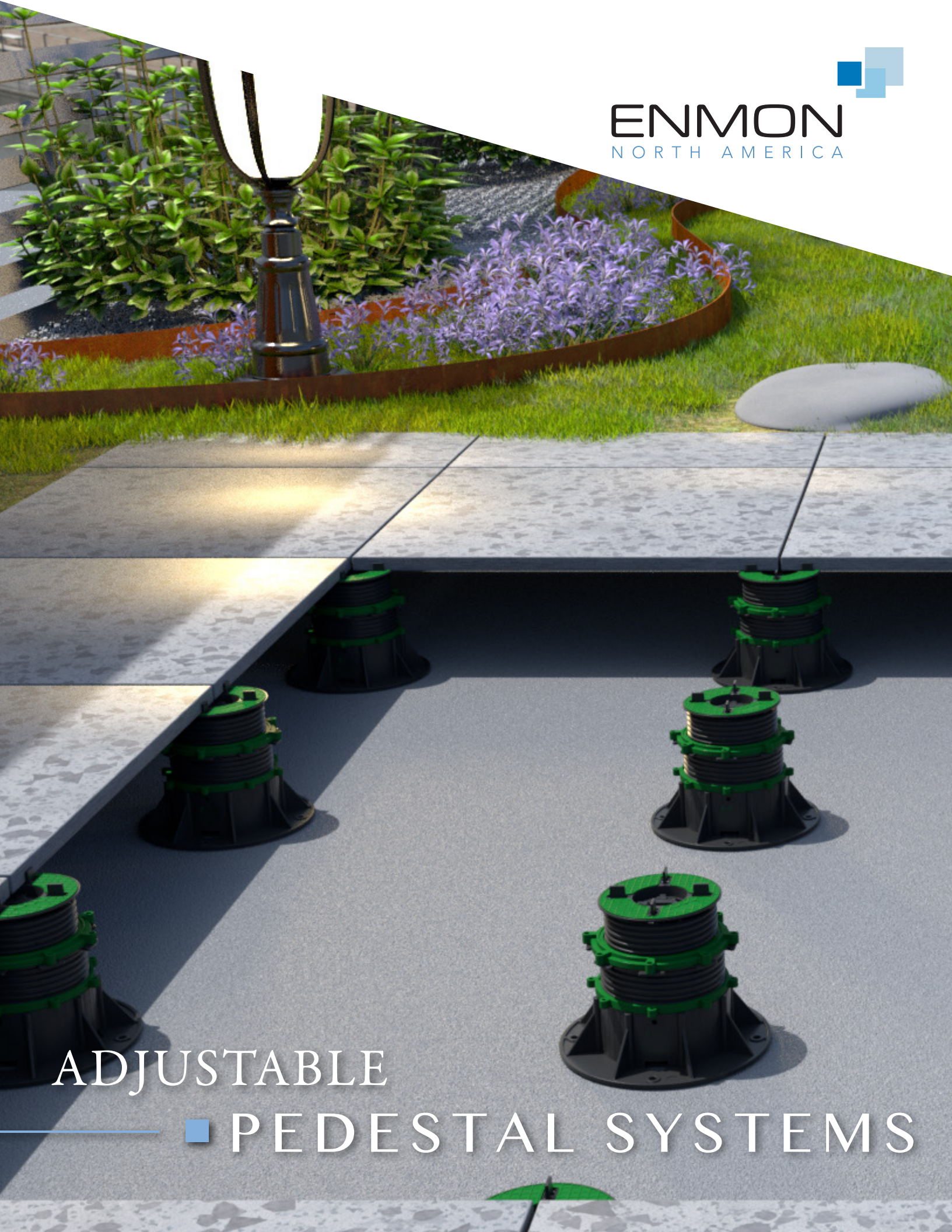




ENMON  
NORTH AMERICA



ADJUSTABLE

■ PEDESTAL SYSTEMS

# INDEX

## ADJUSTABLE PEDESTAL SYSTEMS

4 / ADVANTAGES

6 / APPLICATIONS

### 8 / PEDESTAL SYSTEMS

10 / PRO SERIES PEDESTALS

14 / PRO SERIES PARTS LIST

16 / SELF LEVELLING PEDESTALS

20 / SELF LEVELLING PARTS LIST

22 / STEEL PEDESTALS OVERVIEW

24 / STEEL FIXED PEDESTALS

26 / STEEL FIXED PEDESTALS PARTS LIST

28 / STEEL SELF LEVELLING PEDESTALS

30 / STEEL SELF LEVELLING PEDESTALS PARTS LIST

### 32 / DECKING SYSTEMS

34 / ALUMINUM JOISTS SYSTEM

35 / ALUMINUM JOISTS ACCESSORIES

36 / ALUMINUM JOISTS PARTS LIST

38 / WOOD JOISTS SYSTEM

40 / PERIMETER PROFILES

41 / WIND PROOFING

### 42 / INSTALLATION GUIDE

44 / PEDESTAL INSTALLATION

49 / SPACING GRIDS - PEDESTALS

50 / SPACING GUIDE - JOISTS

52 / SPACING GRIDS - JOISTS

54 / SPACING GUIDE - WPC DECKING / PLANKS

56 / TECHNICAL & CONTACT INFO



# ■ ADVANTAGES

Pedestal systems, often used in construction and architecture, offer several advantages in various applications, especially for raised flooring, decking, and rooftop installations.

Some of the key advantages of pedestal systems include:



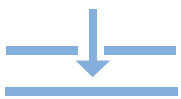
### 1. Leveling:

Pedestal systems allow for precise leveling of surfaces, even on uneven or sloped substrates, ensuring a flat and stable final product.



### 2. Drainage:

They provide excellent drainage solutions, preventing water accumulation on rooftop decks and outdoor terraces, which can help prevent damage and increase safety.



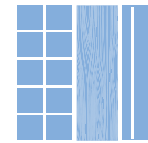
### 3. Accessibility:

The space beneath raised surfaces created by pedestal systems allows for the installation of utilities such as electrical wiring, plumbing, and irrigation systems while also providing easy access for maintenance and repairs.



### 4. Quick Installation:

Pedestal systems are relatively easy and quick to install compared to traditional construction methods. Reducing labour costs and construction time.



### 5. Versatility:

These systems are versatile and can accommodate a variety of materials including tiles, pavers, wood or composite decking, making them suitable for different design preferences.



### 6. Sustainability:

Many pedestal systems are made from eco-friendly and recyclable materials, contributing to sustainable building practices.



### 7. Thermal Insulation:

The space between the pedestal and the surface material can provide some degree of thermal insulation, helping regulate the temperature of the area.



### 8. Weight Distribution:

Pedestal systems distribute the weight of the surface material evenly, reducing point loads and the risk of damage to the substrate.



### 9. Aesthetics:

Pedestal systems allow for a clean, elevated appearance for outdoor spaces, improving the overall aesthetics of the area.



### 10. Reduced Maintenance:

With proper design and materials, pedestal systems can lead to reduced maintenance requirements, saving time and costs over the long term.

These advantages make pedestal systems a practical and popular choice for various applications, including rooftop gardens, terraces, balconies, outdoor patios, and raised flooring in commercial and industrial settings. The specific benefits may vary depending on the type of pedestal system and the materials used, so it's essential to select the right system for your particular project needs.

# ■ APPLICATIONS



RAISED ACCESS FLOORING FOR PLUMBING & ELECTRICAL



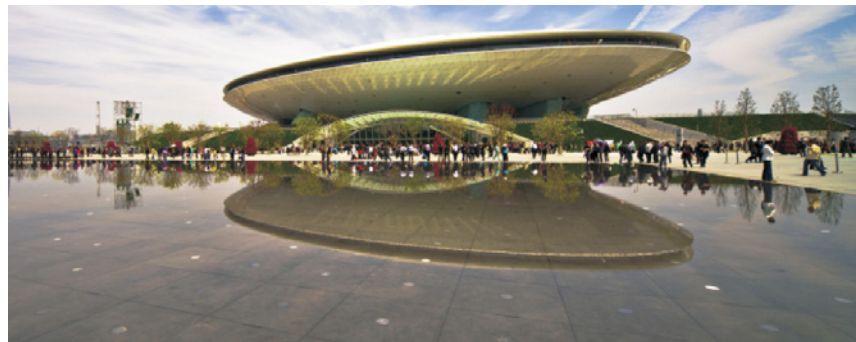
INTERIOR/EXTRERIOR TRANSITIONS



DECKING



TERRACES & BALCONIES



WATER FEATURES



TEMPORARY FLOORING



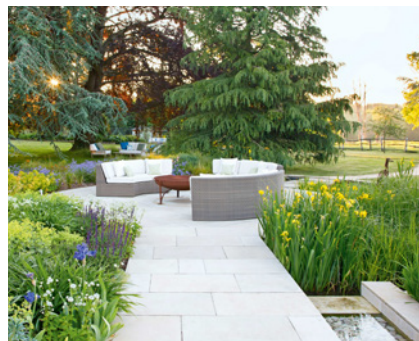
GAZEBOS



POOL DECKS



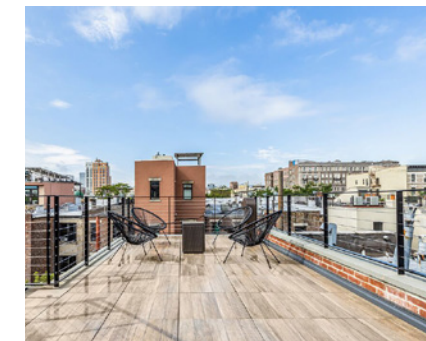
WOOD DECKS



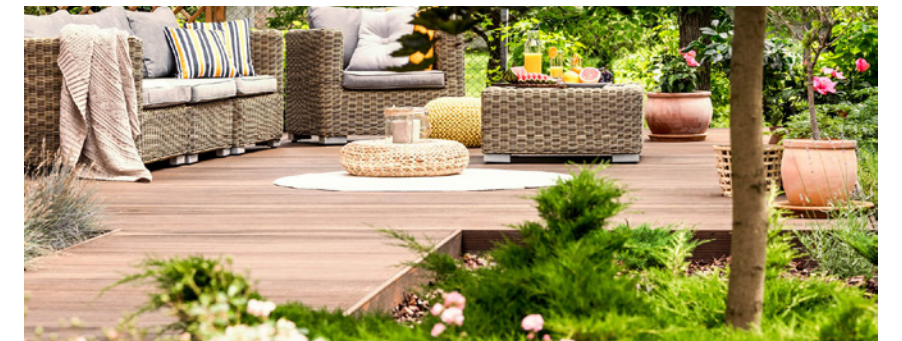
PATHWAYS



RESTAURANT PATIOS



ROOFTOP DECKS

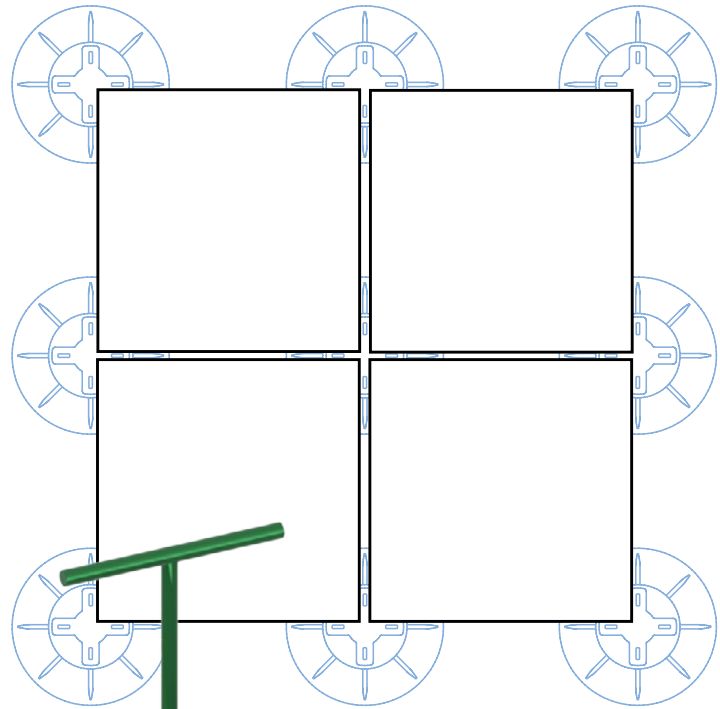


GARDENS

# PEDESTAL SYSTEMS

- ✓ Easy to install
- ✓ High compressive strength
- ✓ Progressive height increment
- ✓ Slope correction
- ✓ Locking rings ensure rigid assembly
- ✓ Soft but durable bases prevent damage
- ✓ Anti-UV and eco friendly
- ✓ Easily removed and reused

BALANCED SUPPORT



PRO SERIES

SELF-LEVELING

WOOD JOIST

ALUMINUM JOIST

STEEL PEDESTAL

## ■ PRO SERIES PEDESTALS

Enmon Pro Series adjustable plastic pedestal are a support system for outdoor raised floor applications with any kind of material: timber decking, wpc decking, stone, ceramic, composite material, metal, etc. Can be placed on any stable substrate.



✓ LIGHT COMMERCIAL  
LOAD CAPACITY

✓ PROGRESSIVE  
HEIGHT INCREMENT

✓ SLOPE CORRECTOR  
ADD ON AVAILABLE

# PRO SERIES MODULAR COMPONENTS

## HEAD

Head is fused with anti-noise and anti-slip rubber that is screwed directly onto base or extender. Can be fitted with various components to support differing surfaces.

## TAB

the head can be fitted with spacer tabs for use with tile or a joist cradle that holds wooden or aluminum joists

## EXTENDER

Extends the height of the pedestal by 160mm. Can be connected with multiple Extenders

## BASE

The base can be simply positioned or fixed to any substrate.

## SLOPE CORRECTOR

Compensate slope from 0-5%  
Assembled on bottom of pedestals  
Can be choose to use it or not for different installation conditions.

## RUBBER BASE

Added traction and noise reduction.



160mm Extender



40mm Extender Pad



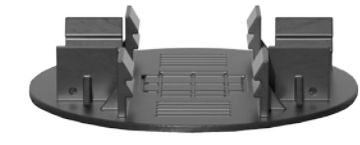
15mm Extender Pad



Tile Spacer Tab



Wood Joist Tab



Aluminum Joist Tab



Base Slope Corrector



Rubber Base



Big Fix Colar



Connecting Rods  
for pedestal spacing of  
2 ft or more



500-750mm



340-500mm

20mm - 29mm



EN - CO - A

29mm - 42mm



EN - CO - B

42mm - 60mm



EN - CO - C

60mm - 95mm



EN - CO - D

95mm - 185mm



EN - CO - E

180mm - 315mm



EN - CO - E  
+ EXTENDER

315mm - 475mm



EN - CO - E  
+ EXTENDER x2

475mm - 635mm



EN - CO - E  
+ EXTENDER x3

LIGHT COMMERCIAL LOAD CAPACITY

HEIGHT RANGE

# PRO SERIES PEDESTAL

## PARTS LIST

PRODUCT CODE	HEIGHT RANGE	PICTURE	PART	PART PICTURE	PACKAGE	CARTON SIZE	
	mm/inches					cm	kg
EN-C0-A	20-29mm (0.79"-1.14")		3mm* spacer tab		30 pcs/ctn	39 x 38 x 21 cm	6.1kg
			A-base		30 pcs/ctn		
EN-C0-B	29-42mm (1.14"-1.65")		3mm* spacer tab		30 pcs/ctn	55 x 38 x 21 cm	8.5kg
			B-base		30 pcs/ctn		
EN-C0-C	42-60mm (1.65"-2.36")		3mm* spacer tab		30 pcs/ctn	41 x 38 x 38 cm	10kg
			C-base		30 pcs/ctn		
EN-C0-D	60-95mm (2.36"-3.74")		3mm* spacer tab		30 pcs/ctn	60 x 38 x 38 cm	13kg
			D-base		30 pcs/ctn		

\*spacer tabs: additional available sizes by special order (8-10 weeks)  
2mm/4mm/5mm/8mm/10mm

PRODUCT CODE	HEIGHT RANGE	PICTURE	PART	PART PICTURE	PACKAGE	CARTON SIZE	
	mm/inches					cm	kg
EN-C0-E	95-185mm (3.74"-7.28")		3mm* spacer tab		30 pcs/ctn	58 x 51 x 38 cm	17.2kg
			E-base		30 pcs/ctn		
EN-C0-E +EXTENDER	180-315mm (7.09"-12.40")		3mm* spacer tab		30 pcs/ctn	EN-C0-E box 58 x 51 x 38 cm + EXTENDER box 66 x 36 x 28 cm	17.2kg + 10.3kg = 27.5kg total
			160mm Extender		30 pcs/ctn		
			E-base		30 pcs/ctn		
160MM EXTENDER	160mm				30 pcs/ctn	66 x 36 x 28 cm	10.3kg

\*spacer tabs: additional available sizes by special order (8-10 weeks)  
2mm/4mm/5mm/8mm/10mm



# ■ SELF LEVELING PEDESTALS

Enmon Self-Leveling Pedestals provide the most flexible means of creating a floating floor system on balconies and roof decks. The heads incorporate a gimbal mechanism which allows a rotational tilt of up to 5%. This can compensate for falls in the subgrade.



## SLOPE CORRECTION

Un-even or sloped surfaces can be compensated with the use of self leveling heads.



✓ LIGHT COMMERCIAL  
LOAD CAPACITY

✓ HEIGHT INCREMENT

✓ BUILT-IN SLOPE  
CORRECTOR

# SELF LEVELING PEDESTAL MODULAR COMPONENTS

## ADJUSTMENT KEY

Allows you to do micro-adjustments of the level without having to remove the tile from the pedestal.

## HEAD

The head of the support is screwed directly on to the base, or on to the extender. Can be fitted with various components to support differing surfaces.

## FIX COLAR

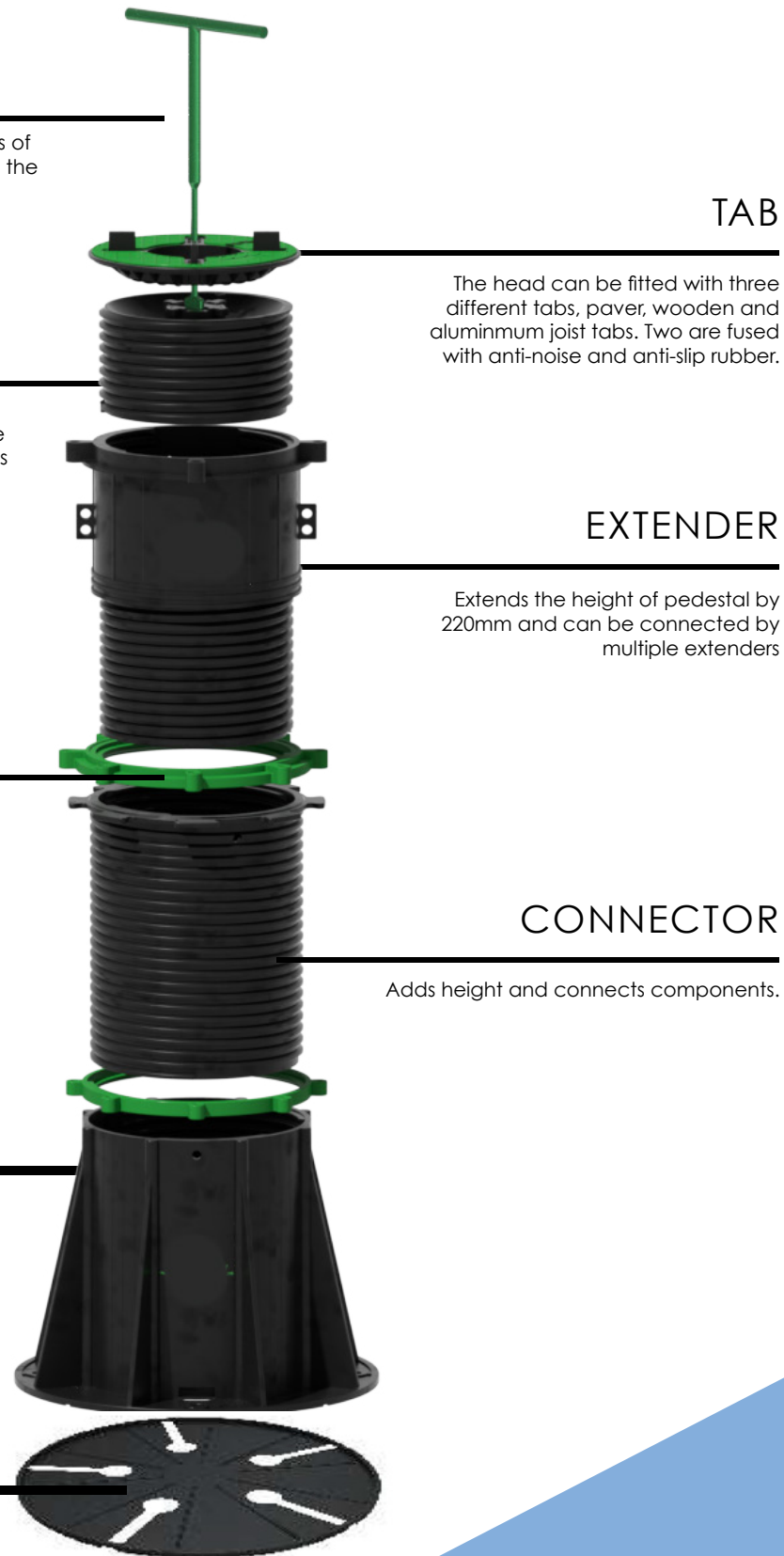
Creates a rigid lock between components.

## BASE

The base can be simply positioned or fixed to any substrate.

## RUBBER BASE

Added traction and noise reduction.



## TAB

The head can be fitted with three different tabs, paver, wooden and aluminum joist tabs. Two are fused with anti-noise and anti-slip rubber.

## EXTENDER

Extends the height of pedestal by 220mm and can be connected by multiple extenders.

## CONNECTOR

Adds height and connects components.



Adjustment Key



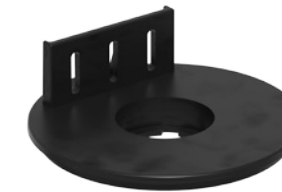
220mm Extender



Head Lock



Tile Spacer Tab



Wood Joist Tab



Aluminum Joist Tab



Rubber Base



Big Fix Colar



Connecting Rods  
for pedestal spacing of  
2 ft or more



500-750mm

340-500mm

23mm - 33mm

EN - SLO - A

33mm - 68mm

EN - SLO - B

67mm - 157mm

EN - SLO - C

154mm - 405mm

EN - SLO - D

272mm - 595mm

EN - SLO - D  
+ EXTENDER

392mm - 785mm

EN - SLO - D  
+ EXTENDER X2

520mm - 975mm

EN - SLO - D  
+ EXTENDER X3

LIGHT COMMERCIAL LOAD CAPACITY

## HEIGHT RANGE

# SELF LEVELING PEDESTAL

## PARTS LIST

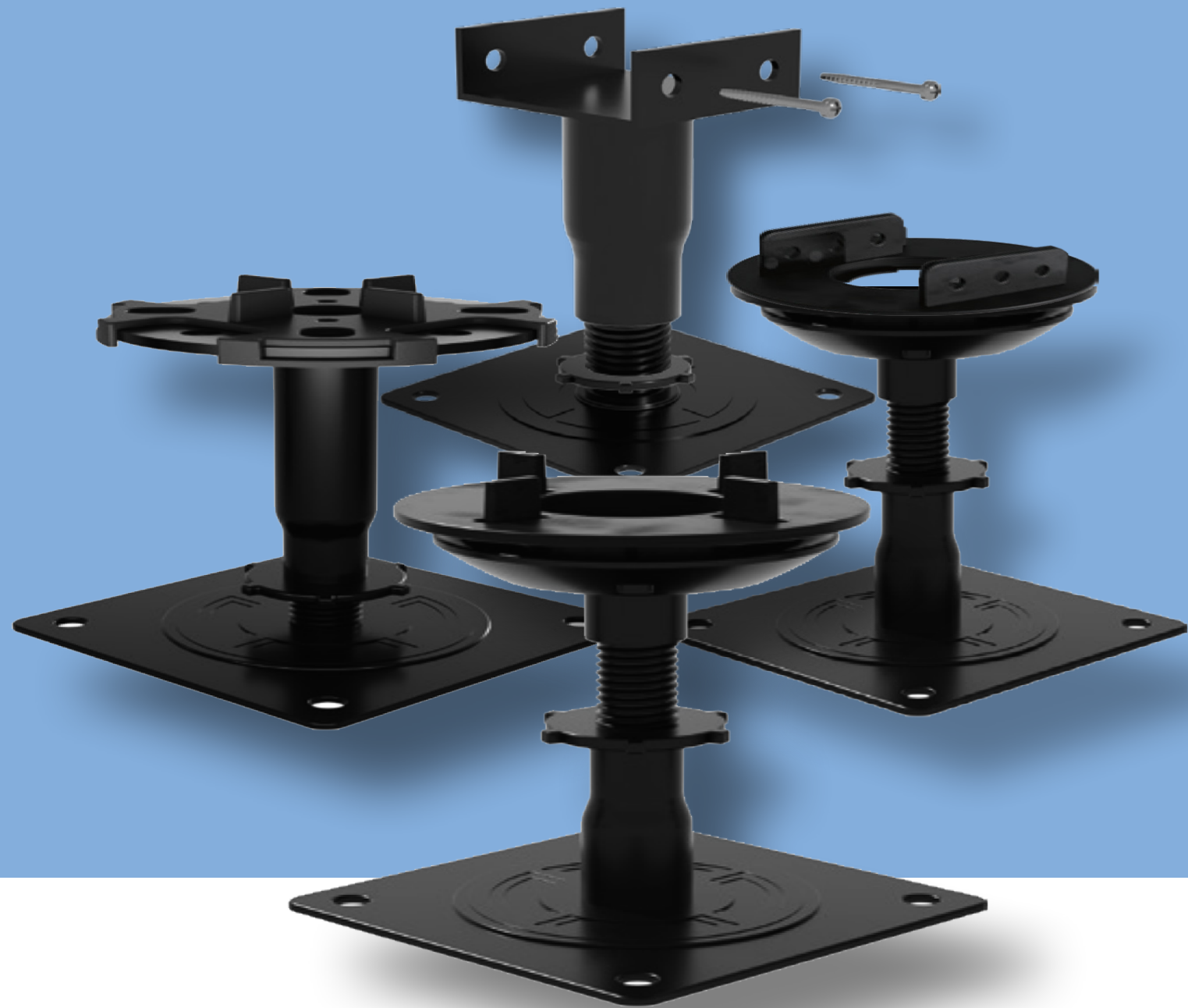
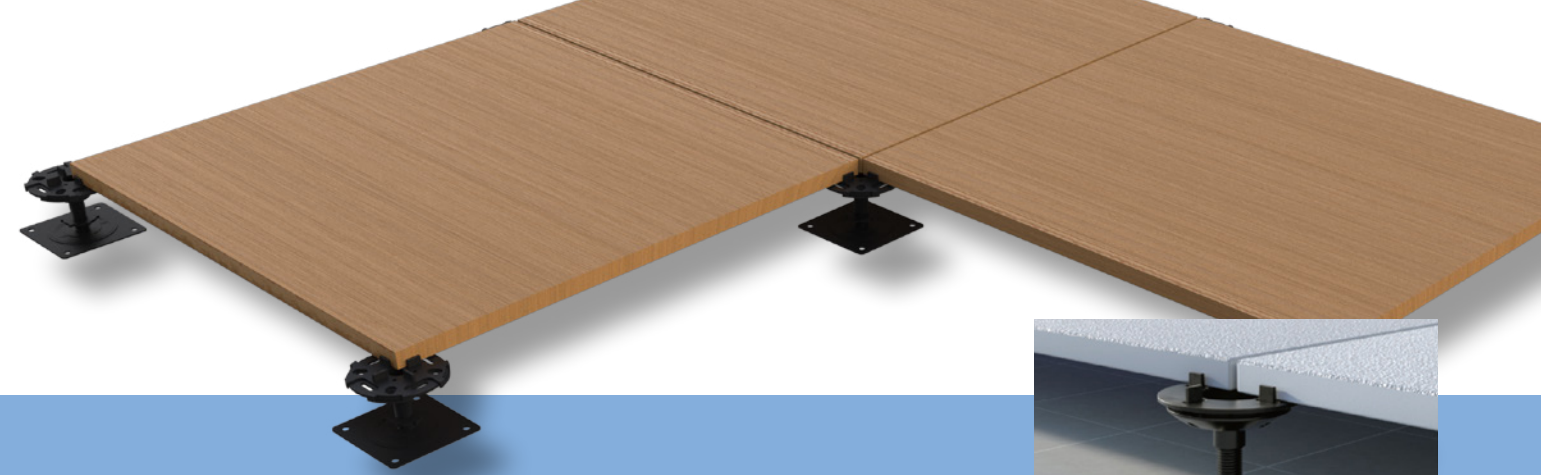
PRODUCT CODE	HEIGHT RANGE	PICTURE	PART	PART PICTURE	PACKAGE	CARTON SIZE	
	mm/inches					cm	kg
EN-SLO-A	23-33mm (0.9"-1.3")		self-leveling head + 4mm* spacer tab		30 pcs/ctn	48 x 38 x 21 cm	5.5kg
			A-base		30 pcs/ctn		
EN-SLO-B	33-68mm (1.3"-2.68")		self-leveling head + 4mm* spacer tab		30 pcs/ctn	58 x 38 x 21 cm	8.2kg
			B-base		30 pcs/ctn		
EN-SLO-C	67-157mm (2.64"-6.18")		self-leveling head + 4mm* spacer tab		30 pcs/ctn	61 x 38 x 38 cm	12.4kg
			C-base		30 pcs/ctn		
EN-SLO-D	154-405mm (6.06"-15.95")		self-leveling head + 4mm* spacer tab		15 pcs/ctn	65 x 38 x 38 cm	14.5kg
			D-base		15 pcs/ctn		

\*spacer tabs: 5mm size available by special order (8-10 weeks)

PRODUCT CODE	HEIGHT RANGE	PICTURE	PART	PART PICTURE	PACKAGE	CARTON SIZE	
	mm/inches					cm	kg
EN-SLO-D +EXTENDER	272-595mm (10.71"-23.43")		self-leveling head + 4mm* spacer tab		15 pcs/ctn	EN-SLO-D Box 65 x 38 x 38 cm + EXTENDER Box 66 x 48 x 27 cm	14.5kg + 14.5kg = 29.0kg total
			220mm Extender		30 pcs/ctn		
			D-base		15 pcs/ctn		
220MM EXTENDER	220mm (8.7")				30 pcs/ctn	66 x 48 x 27 cm	14.5kg
ADJUSTMENT KEY					1 pcs/ctn		

\*spacer tabs: 5mm size available by special order (8-10 weeks)

# STEEL NON-COMBUSTIBLE PEDESTALS



A1/A2 fire rating.



Withstands weight of up to 5 tons.



Self-leveling head for slopes from 0 - 5%



Completely assembled product.



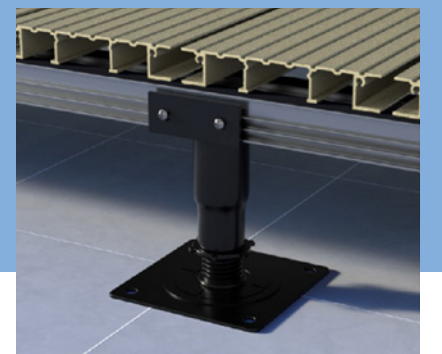
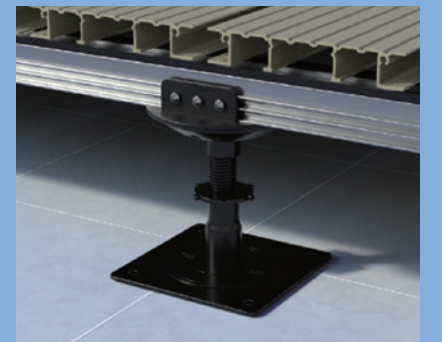
Coated with protective layer.



Height adjustment key for self leveling.



Fix collar lock.



 NON-COMBUSTIBLE

 HEIGHT INCREMENT

 OVER 10,000 LBS WEIGHT CAPACITY

# FIXED STEEL PEDESTAL MODULAR COMPONENTS



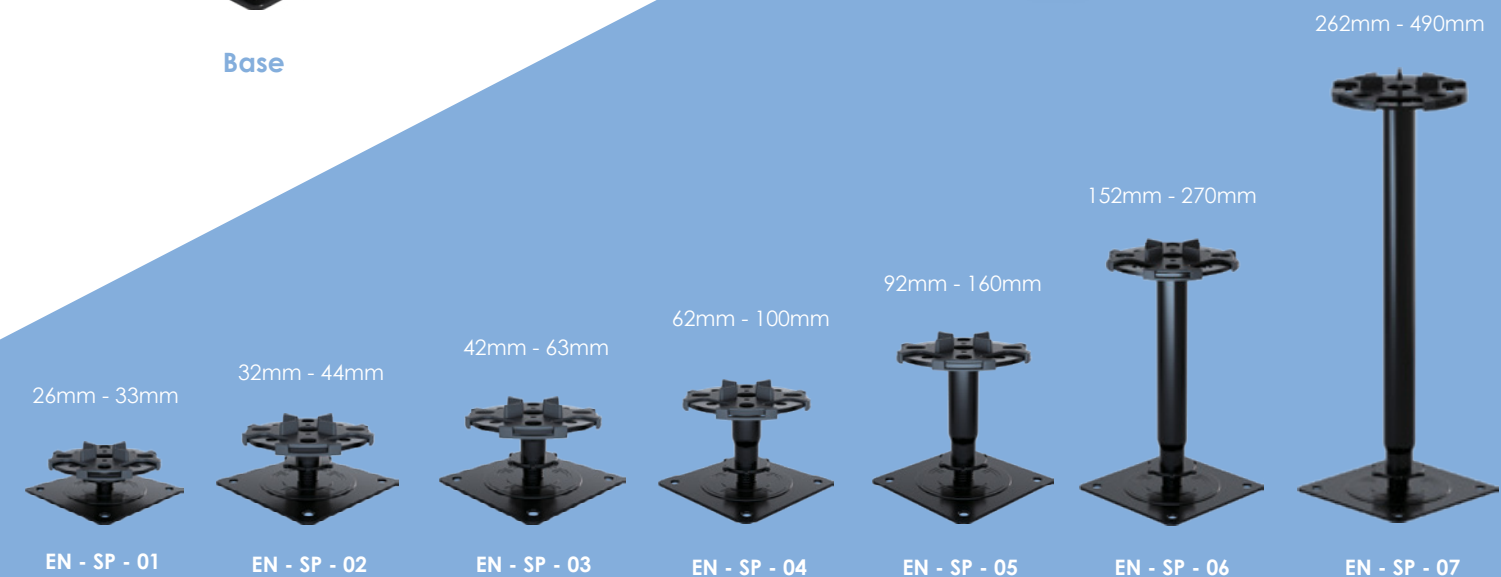
Fixed Head for Tile



Fixed Head for Joist



Base










## HEIGHT RANGE

# ■ STEEL PEDESTAL

## PARTS LIST

### WITH STEEL SPACER TAB / 2mm / 3.5mm /5mm

PRODUCT CODE	HEIGHT RANGE mm	PICTURE	DESCRIPTION	PACKAGE	CARTON SIZE cm	WEIGHT/CTN kg
EN-SP-01	26-33mm		EN-SP-01 with aluminum spacer tab	30 pcs/ctn	32 x 32 x 17	14.32
EN-SP-02	32-44mm		EN-SP-02 with aluminum spacer tab	30 pcs/ctn	32 x 32 x 20	15.4
EN-SP-03	42-63mm		EN-SP-03 with aluminum spacer tab	30 pcs/ctn	32 x 32 x 23	15.8
EN-SP-04	62-100mm		EN-SP-04 with aluminum spacer tab	30 pcs/ctn	32 x 32 x 32	18.64
EN-SP-05	92-160mm		EN-SP-05 with aluminum spacer tab	30 pcs/ctn	32 x 32 x 44	22.24
EN-SP-06	152-270mm		EN-SP-06 with aluminum spacer tab	30 pcs/ctn	32 x 32 x 52	23.14
EN-SP-07	262-490mm		EN-SP-07 with aluminum spacer tab	30 pcs/ctn	32 x 32 x 57	23.41

# STEEL PEDESTAL ■

## PARTS LIST

### WITH JOIST CRADLE

PRODUCT CODE	HEIGHT RANGE mm	PICTURE	DESCRIPTION	PACKAGE	CARTON SIZE cm	WEIGHT/CTN kg
EN-SPJ-01	26-33mm		EN-SPJ-01 with joist cradle	30 pcs/ctn	32 x 32 x 20	11.9
EN-SPJ-02	32-44mm		EN-SPJ-02 with joist cradle	30 pcs/ctn	32 x 32 x 22	12.5
EN-SPJ-03	42-63mm		EN-SPJ-03 with joist cradle	30 pcs/ctn	32 x 32 x 36	13.7
EN-SPJ-04	62-100mm		EN-SPJ-04 with joist cradle	30 pcs/ctn	32 x 32 x 34	14.4
EN-SPJ-05	92-160mm		EN-SPJ-05 with joist cradle	30 pcs/ctn	32 x 32 x 24	9.7
EN-SPJ-06	152-270mm		EN-SPJ-06 with joist cradle	30 pcs/ctn	32 x 32 x 36	13
EN-SPJ-07	262-490mm		EN-SPJ-07 with joist cradle	30 pcs/ctn	32 x 32 x 58	16.3

# SELF LEVELLING STEEL PEDESTAL MODULAR COMPONENTS

## SELF LEVELING HEAD

The head can be fitted with self-leveling tabs for tile or joists.

## SELF LEVELING CONNECTOR

Connects the base component to the head component.

## FIX COLLAR

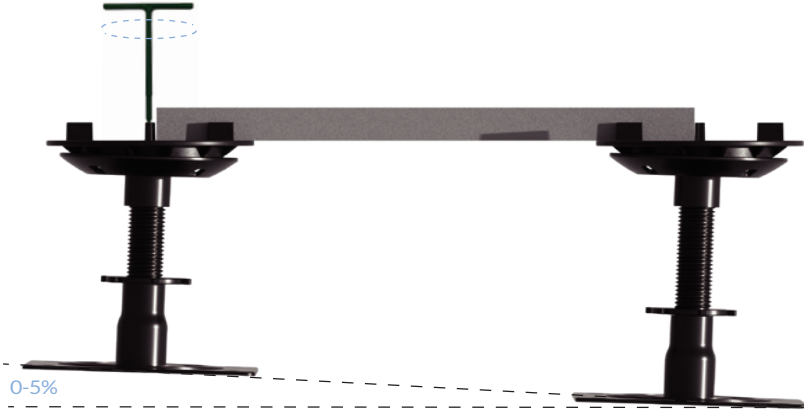
Adds height and connects components.

## BASE

Adds height and connects components.



Self Levelling System



Automated Slope Correction using adjustment key and self-levelling head



Base



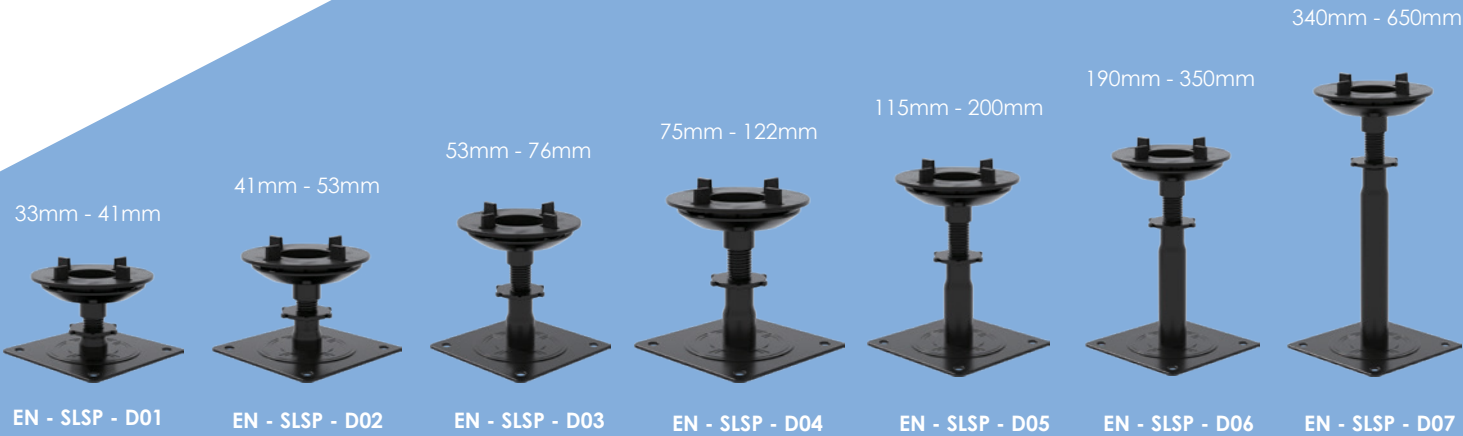
Self-Levelling Head for Joist



Self-Levelling Head for Tile



Adjustment Key










## HEIGHT RANGE

# SELF LEVELLING STEEL PEDESTAL

## PARTS LIST








WITH STEEL SPACER TAB / 2mm / 3.5mm /5mm

PRODUCT CODE	HEIGHT RANGE mm	PICTURE	DESCRIPTION	PACKAGE	CARTON SIZE cm	WEIGHT/CTN kg
EN-SLSP-01	40-50mm		EN-SLSP-01 with self levelling spacer tab	30 pcs/ctn	32 x 32 x 22	11.08
EN-SLSP-02	46-64mm		EN-SLSP-02 with self levelling spacer tab	30 pcs/ctn	32 x 32 x 24	11.8
EN-SLSP-03	64-88mm		EN-SLSP-03 with self levelling spacer tab	30 pcs/ctn	32 x 32 x 32	12.16
EN-SLSP-04	86-130mm		EN-SLSP-04 with self levelling spacer tab	30 pcs/ctn	32 x 32 x 40	13.6
EN-SLSP-05	120-200mm		EN-SLSP-05 with self levelling spacer tab	30 pcs/ctn	32 x 32 x 42	16.12
EN-SLSP-06	190-320mm		EN-SLSP-06 with self levelling spacer tab	30 pcs/ctn	32 x 32 x 59	10.72
EN-SLSP-07	305-545mm		EN-SLSP-07 with self levelling spacer tab	30 pcs/ctn	32 x 32 x 65	17.74

# SELF LEVELLING STEEL PEDESTAL

## PARTS LIST

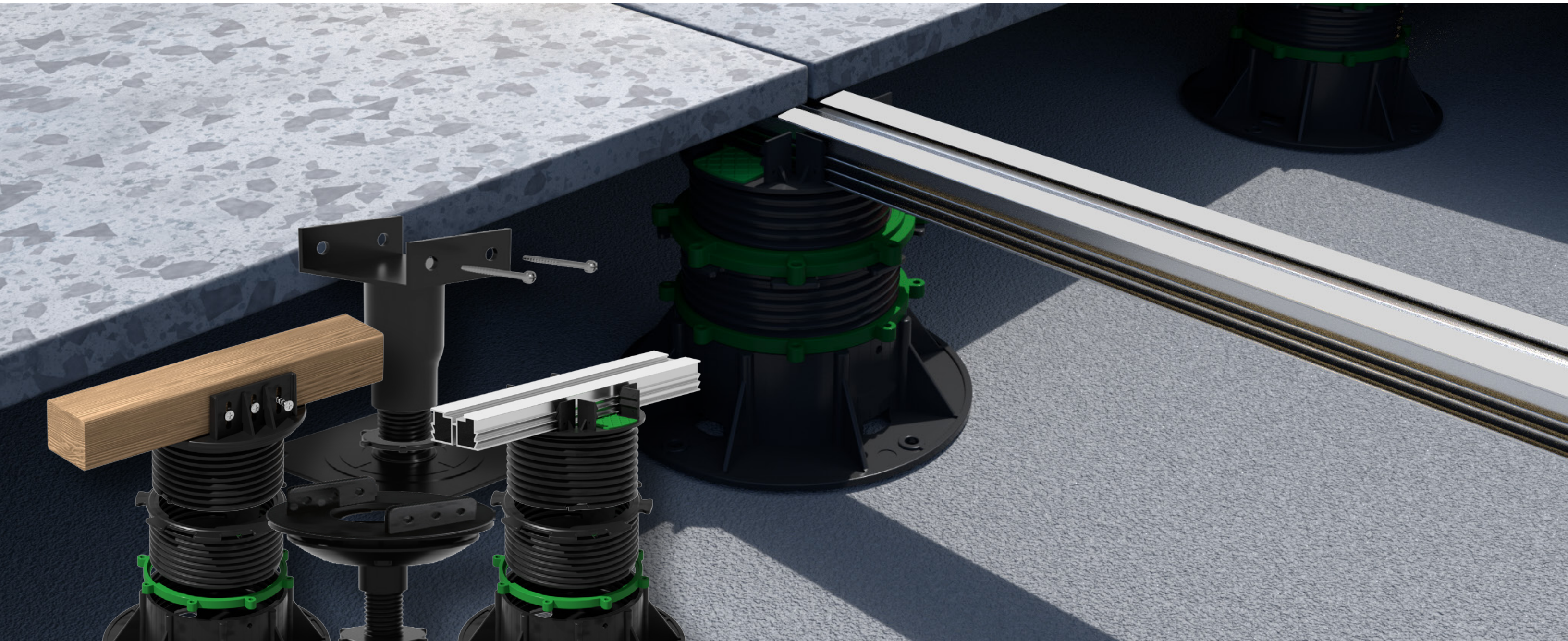
WITH JOIST CRADLE

PRODUCT CODE	HEIGHT RANGE mm	PICTURE	DESCRIPTION	PACKAGE	CARTON SIZE cm	WEIGHT/CTN kg
EN-SLSP-01	40-50mm		EN-SLSP-01 with self levelling joist cradle	30 pcs/ctn	32 x 32 x 26	11.52
EN-SLSP-02	46-64mm		EN-SLSP-02 with self levelling joist cradle	30 pcs/ctn	32 x 32 x 28	12.16
EN-SLSP-03	64-88mm		EN-SLSP-03 with self levelling joist cradle	30 pcs/ctn	32 x 32 x 35	12.52
EN-SLSP-04	86-130mm		EN-SLSP-04 with self levelling joist cradle	30 pcs/ctn	32 x 32 x 44	13.64
EN-SLSP-05	120-200mm		EN-SLSP-05 with self levelling joist cradle	30 pcs/ctn	32 x 32 x 47	12.32
EN-SLSP-06	190-320mm		EN-SLSP-06 with self levelling joist cradle	30 pcs/ctn	32 x 32 x 44	10.56
EN-SLSP-07	305-545mm		EN-SLSP-07 with self levelling joist cradle	30 pcs/ctn	32 x 32 x 67	17.74



## ■ DECKING SYSTEMS

Enmon Pro-Collection, Self Levelling and Non-Combustable Steel Pedestals support decking systems using aluminum or wooden joists. These joists are compatible with timber decking, wpc decking, stone, ceramic, composite material, metal, etc.



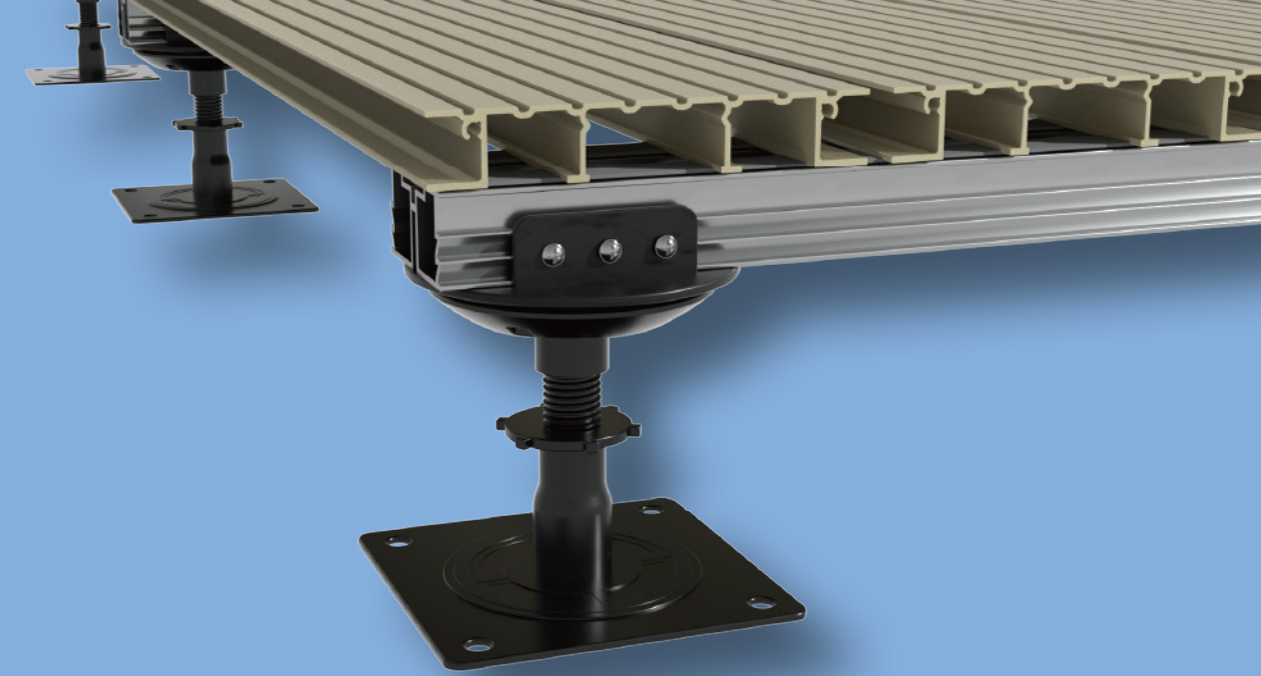
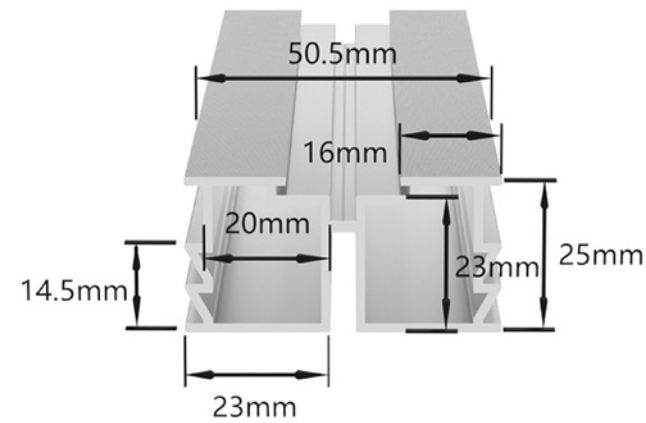
✓ ALUMINUM JOIST SYSTEM

✓ WOODEN JOIST SYSTEM

✓ OPTIONS FOR EVERY PEDESTAL TYPE

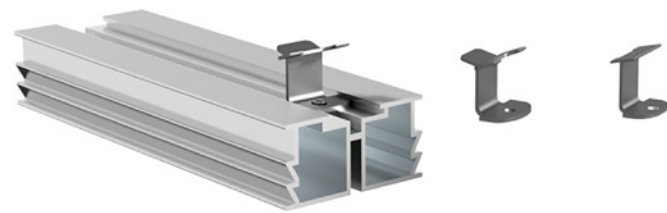
# ALUMINUM JOISTS

Enmon Aluminum Joists are 25mm x 50.5mm with a length of 3000mm. Joist support tabs snap into place on any Enmon pedestal base system, no screws required. The aluminum joist setup is fast and provides added safety and load bearing capability.

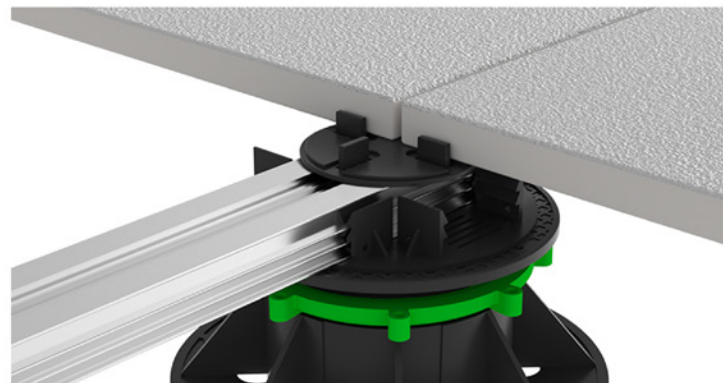
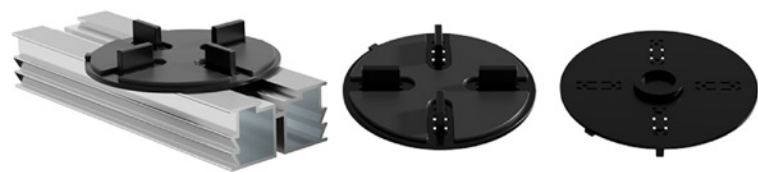


# ACCESSORIES

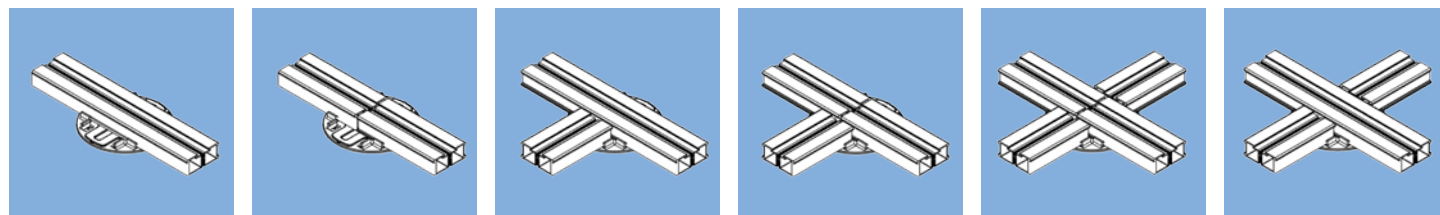
## CLIP SYSTEM FOR WOOD PLANKS



## SPACER TAB HEADS FOR PAVER TILE DECKING



## INTERSECTION OPTIONS



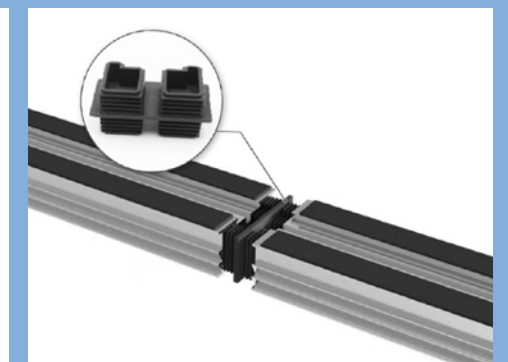
## MIDDLE CLIP / HIDDEN CLIP

Secures planks to the aluminum joist system.



## EDGE CLIP / STARTER CLIP

Secures first plank to the aluminum joist system starting along the perimeter.



## JOINT CONNECTOR

Connects two joists seamlessly.



## ALUMINUM JOIST TAB

Attaches the aluminum joist to the pedestal head.



## SOFT RUBBER TAB FOR TILE

Secures the aluminum joist to the tile decking material.








## RUBBER STRIP

Provides sound reduction and friction reduction between the joist and the decking material.

# ALUMINUM JOIST SYSTEM

## PARTS LIST


### QUICK INSTALL FOR WPC DECKING

ITEM	IMAGE	DESCRIPTION	SOLD BY PC OR ROLL
ALUMINUM JOIST		50x25mm stock length: 3m/pc Length is customizable	Pc
ALUMINUM JOIST CONNECTOR			Pc
RUBBER STRIP		each meter of aluminum joist requires 2 meters of rubber strip	Roll 30ft / 10m
WPC DECKING EDGE CLIP / STARTER CLIPS Stainless steel. No screw required		low clip for bottom thickness of decking slot 7-9mm	Pc
WPC DECKING HIDDEN CLIP / MIDDLE CLIPS Stainless steel. No screw required		high clip for bottom thickness of decking slot 9-11mm	Pc

# ALUMINUM JOIST SYSTEM





## PARTS LIST

### QUICK INSTALL FOR TILE

ITEM	IMAGE	DESCRIPTION	SOLD BY PC OR ROLL
ALUMINUM JOIST		50x25mm Thickness 1.5mm Stock length: 3m/pc Length is customizable	Pc
ALUMINUM JOIST CONNECTOR			Pc
SPACER TAB WITH SOFT RUBBER FOR TILE		Available spacer tab thickness: 2mm, 3.5mm, 5mm	Pc

# WOOD JOISTS

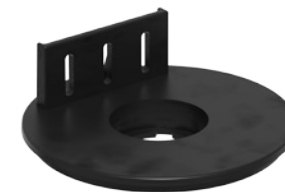
## ADVANTAGES

-  **COST EFFECTIVE**
-  **EASY TO INSTALL**
-  **VERSATILE**
-  **RENEWABLE RESOURCE**

Wood joists when used with Enmon pedestals offer a cost effective and easy way to achieve raised floor decking. They are lightweight and can be easily cut and installed, streamlining the construction process and reducing labor costs. Wood is a renewable resource, making it an environmentally friendly choice for construction. Sustainable forestry practices can ensure a continuous supply of wood for building. Wood joists can be adapted to various architectural designs and construction requirements. They allow for flexibility in creating different floor plans and accommodating specific project needs.



Pro-Series Pedestal Tab for Wood Joist



Self Levelling Pedestal Tab for Wood Joist



Non-Combustible Steel Pedestal Fixed Head for Wood Joist



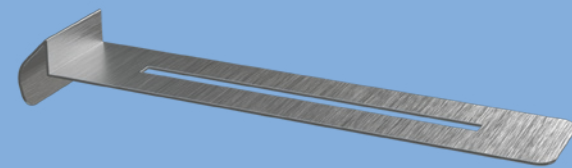
Non-Combustible Steel Pedestal Self-Levelling Tab for Wood Joist

# PERIMETER PROFILES



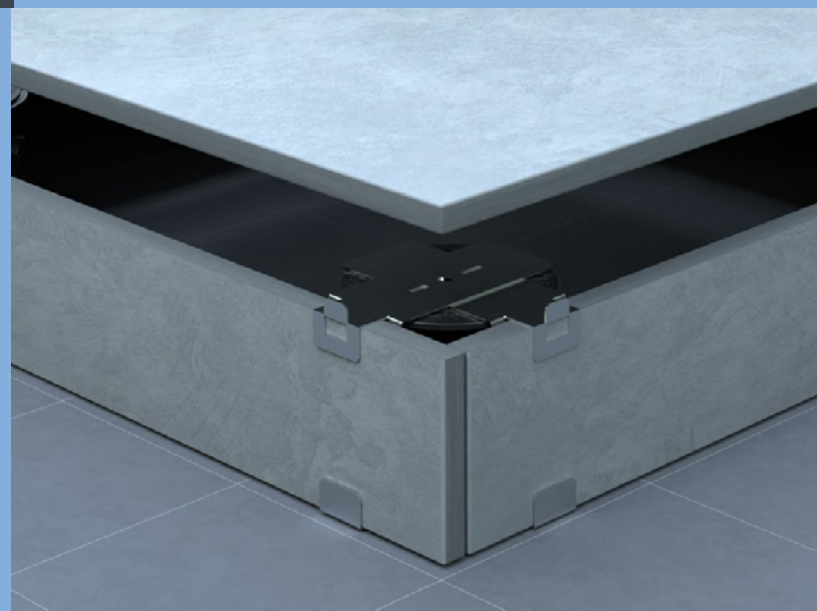
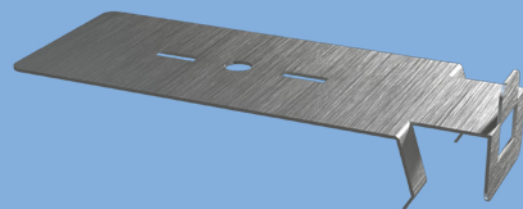
## PERIMETER EDGE CLIP

Provides a uniform spacing of 1cm from walls or edging. Compatible with any spacer tab.



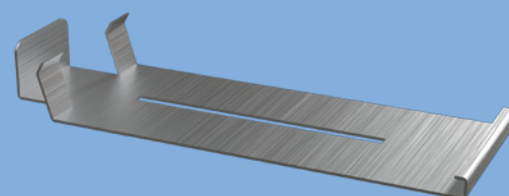
## TOP VERTICAL CLOSURE CLIP

One clip is attached to the top tab, providing vertical closure gap elimination.



## BOTTOM VERTICAL CLOSURE CLIP

One clip is attached to the pedestal base, providing vertical closure gap elimination.

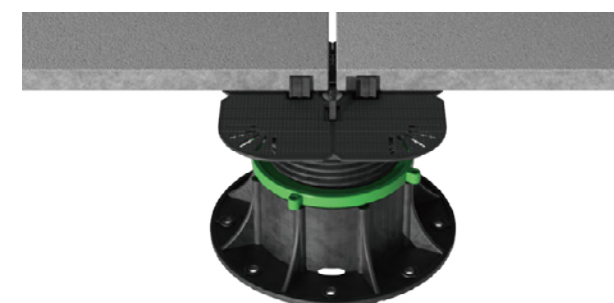
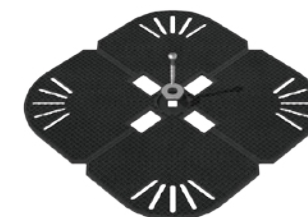


# WINDPROOFING



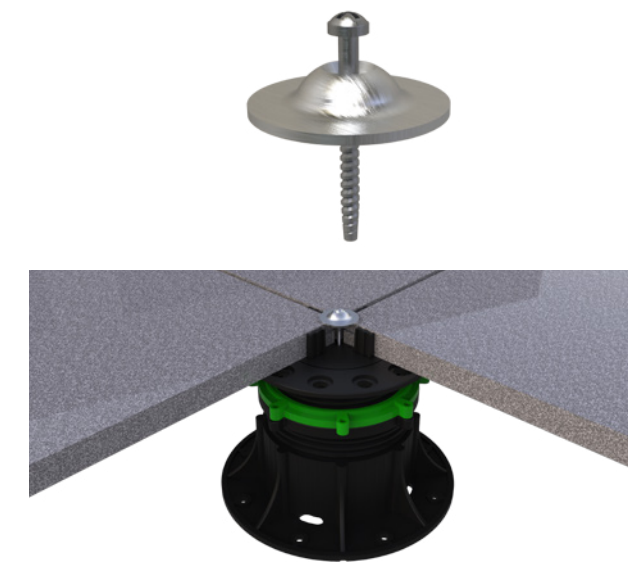
## HIDDEN LOCK

Requires cutting into the tile horizontally. The lock remains hidden beneath the surface and provides strong wind resistance.



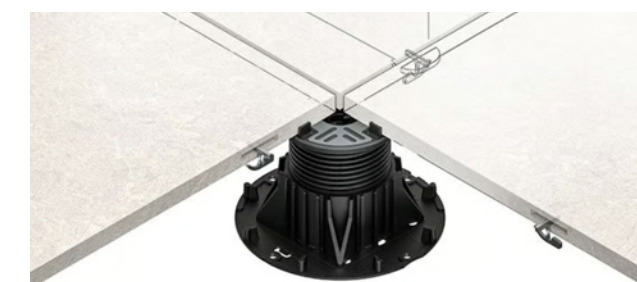
## GLUED LOCK

This locking tab is designed to work with glue in order to secure the decking material. Depending on the glue product used, the adhesion may reduce over time.



## EXPOSED LOCK

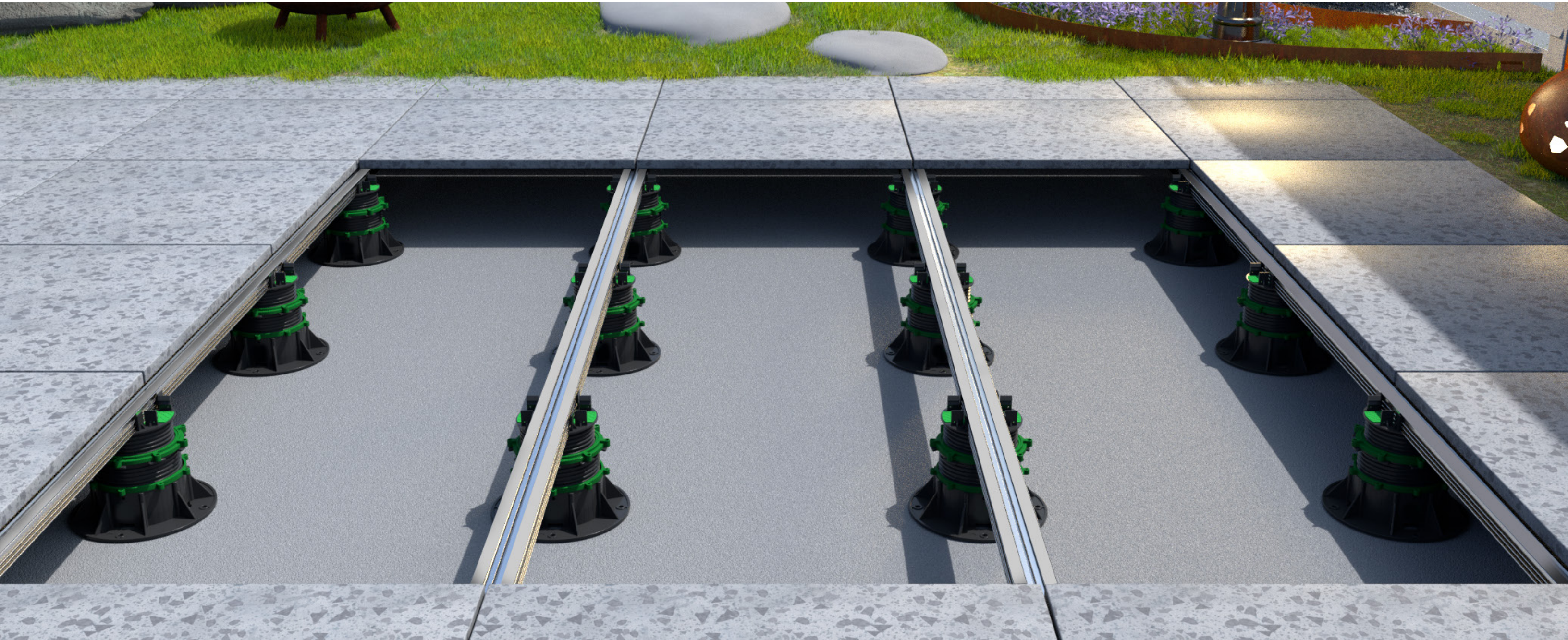
Provides a secure hold without the need to cut the tile. A small profile will remain exposed. Works with any Enmon plastic pedestal.



## SKIPPER SYSTEM

Universal wind proof system that uses a small anchor which, positioned between the tiles, creates a solid and homogeneous connection between them, avoiding their lifting.

# ■ INSTALLATION GUIDE



## 1

### PREPARATION

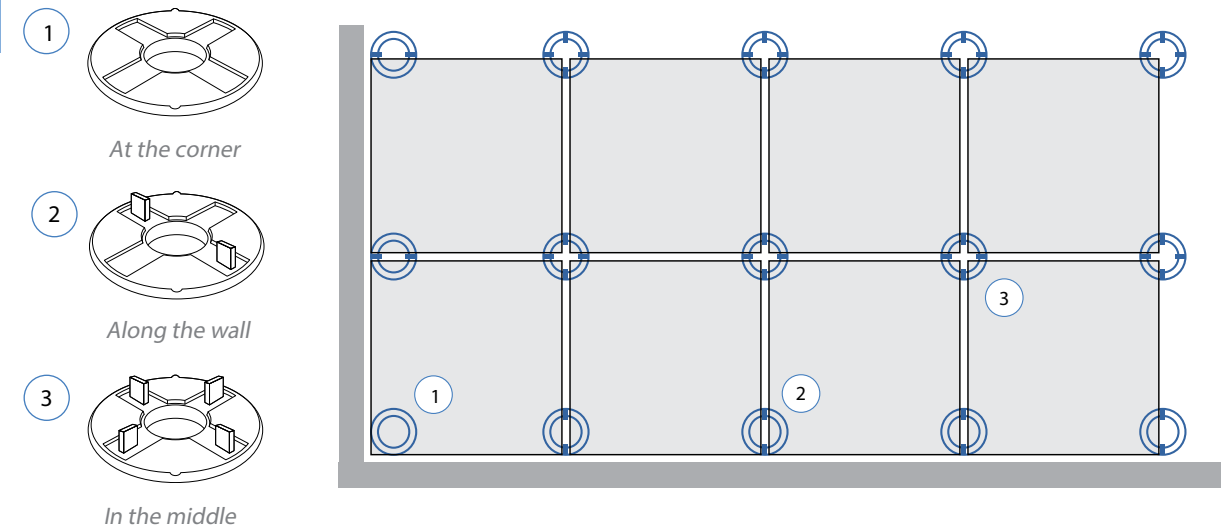
Clean the existing surface and check that the solid substrate is level to the right type of pedestal. If substrate is concrete it must be dry and cured. If laying on sand or gravel consider using a concrete base to improve stability.



## 3

### SECURE SPACER TABS

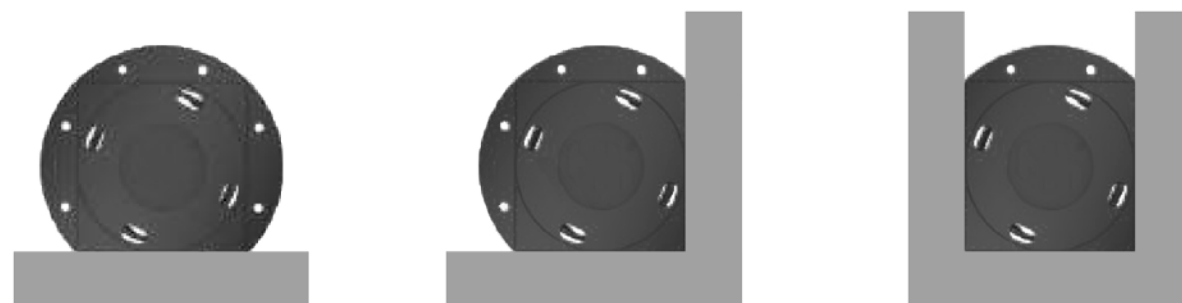
Spacer tabs can be broken off to accommodate the number of tiles and relation to walls and edges.



## 2

### TRIM PEDESTAL BASES

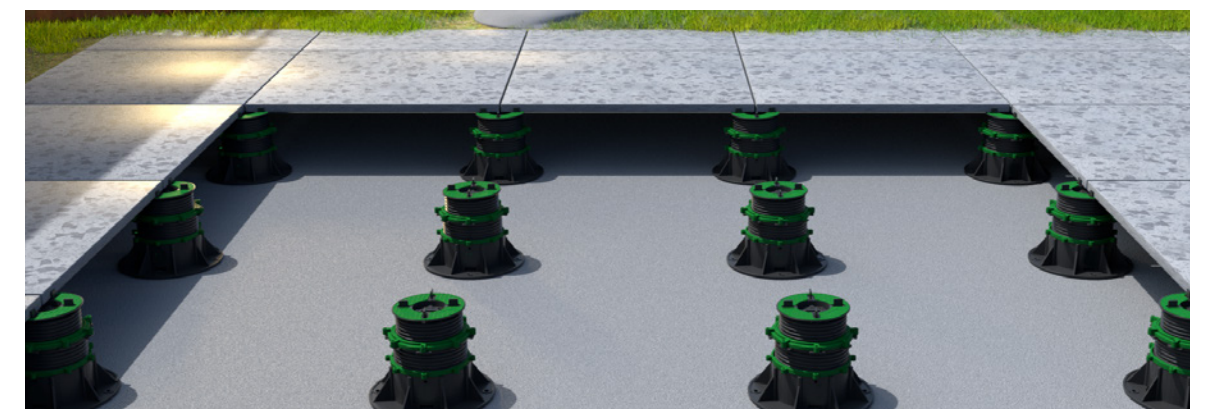
Plastic pedestal bases are scored on the bottom to allow for easy cutting to achieve a straight edge against walls corners or edges.



## 4

### ARRANGE THE PEDESTALS IN ROWS

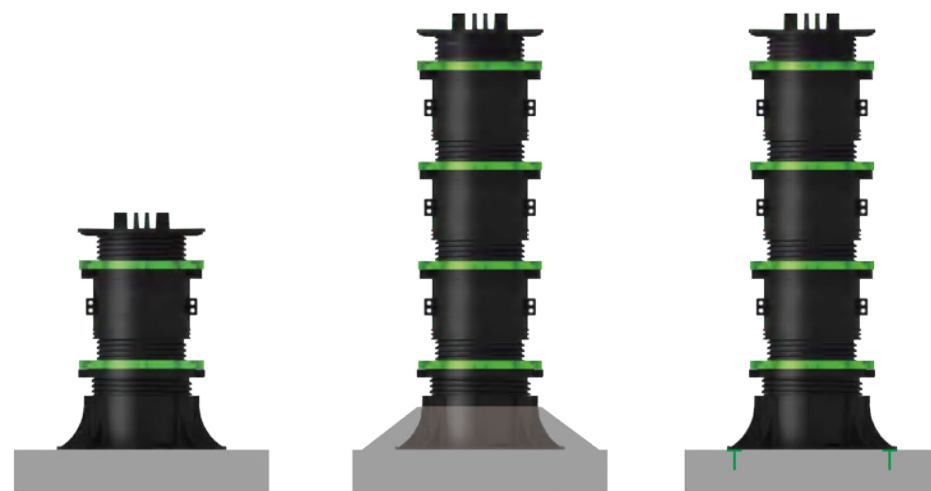
Using a grid system (see page 48) space and align the pedestals to cover the raised flooring area.



5

## SECURE BASES

Ensure stability by securing the bases to the substrate. We recommend using a concrete, glue or screw method for pedestals over the height of 400mm.



**HEIGHT UNDER 400mm**  
Secured base not required.

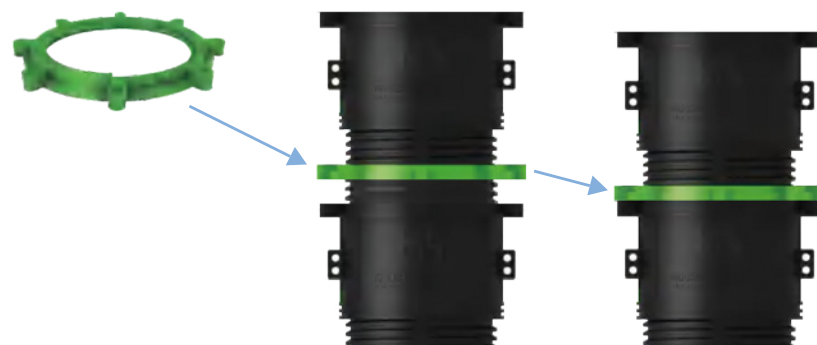
**HEIGHT OVER 400mm**  
Secure base using glue or concrete.

**HEIGHT OVER 400mm**  
Secure base using screws and bolts.

6

## LOCK FIX COLLAR

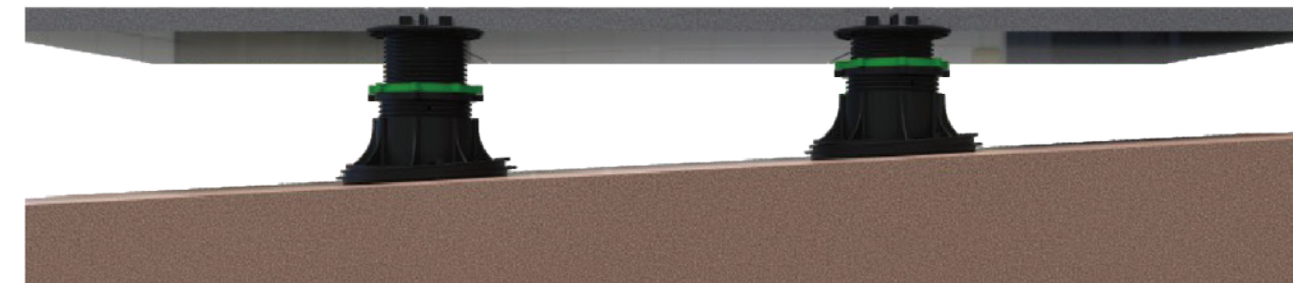
Once height is determined, twist the fix collar to the base of the upper module, securing the modules together.



7

## SLOPE CORRECTION

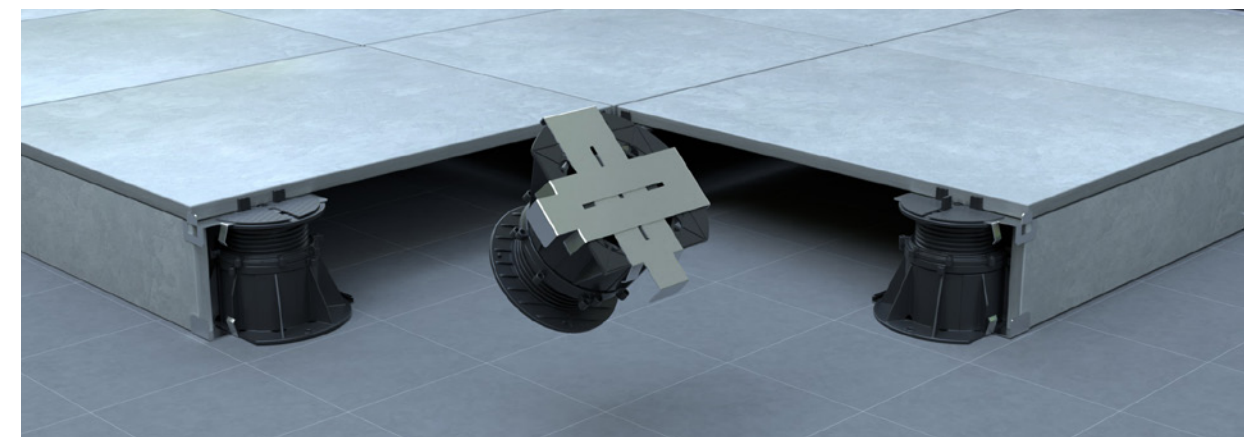
If using fixed bases, use a slope corrector at the base if terrain is uneven. Twisting the two components creates a slope from 0 - 5%.



8

## PLACE PERIMETER CLIPS

Ensure even spacing from walls and edges with perimeter clips.

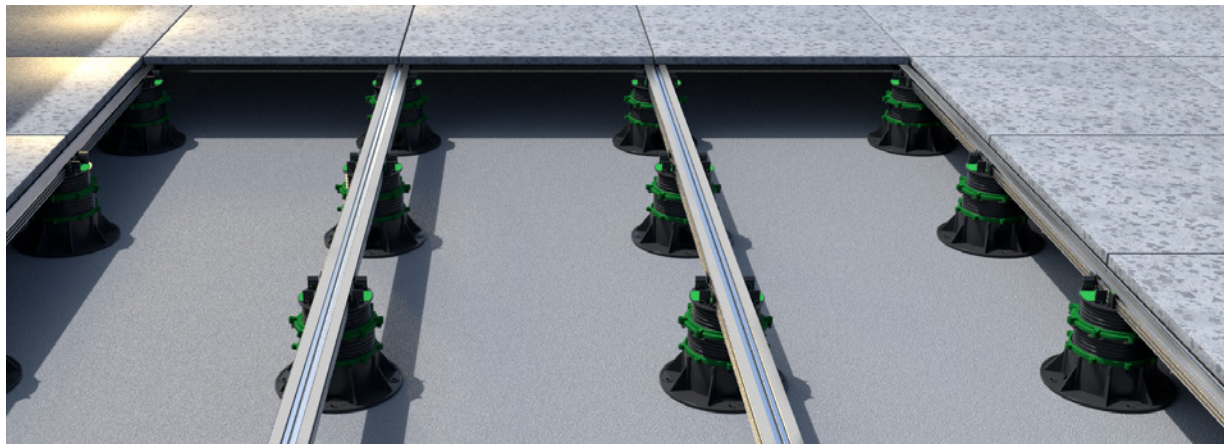




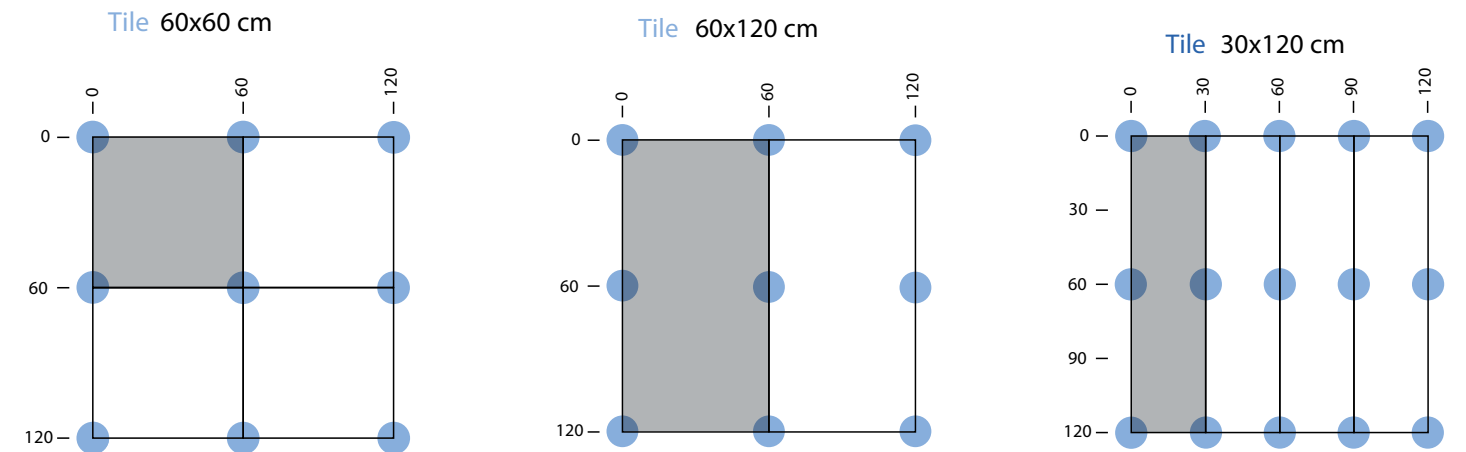
9

## LAY THE TILE OR JOISTS

Lay the tile or joist system along the heads of the pedestals. Ensure edges are lined up tightly with the tabs or joist clips.



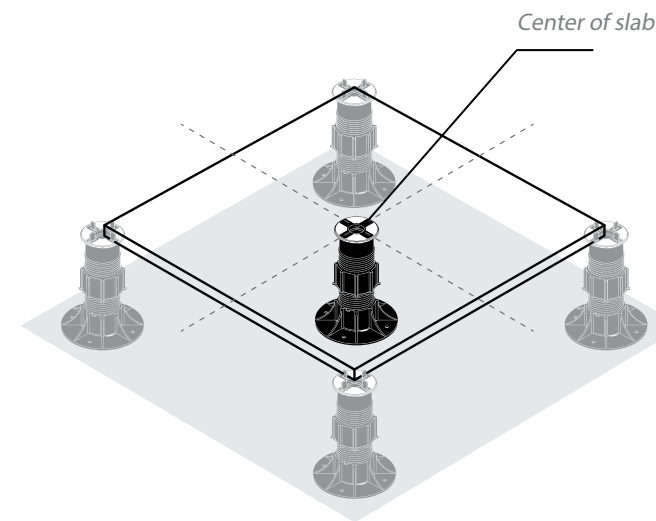
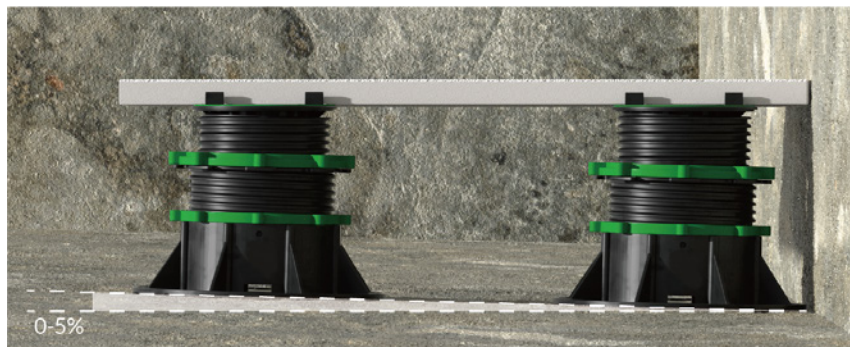
## PLACEMENT ACCORDING TO SLAB SIZE



10

## SLOPE CORRECTION WITH SELF LEVELLING PEDESTALS

If using self levelling heads you can adjust the final level using an adjustment key after the tile is laid.

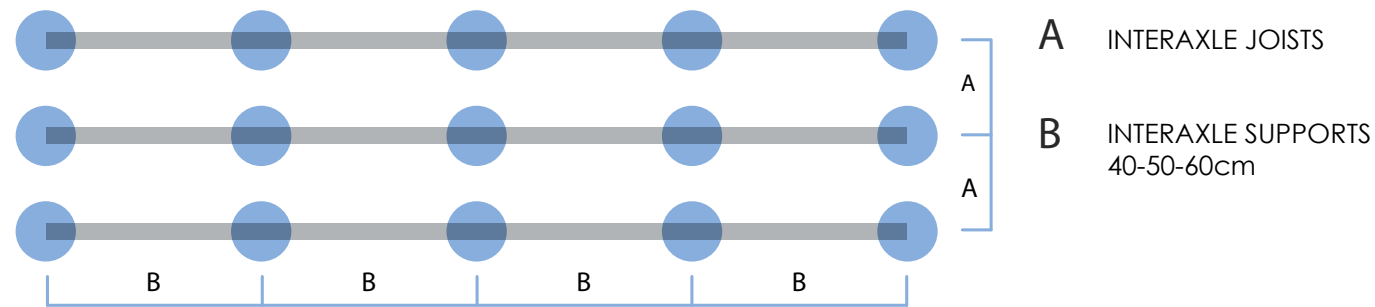


## CENTRAL SUPPORT

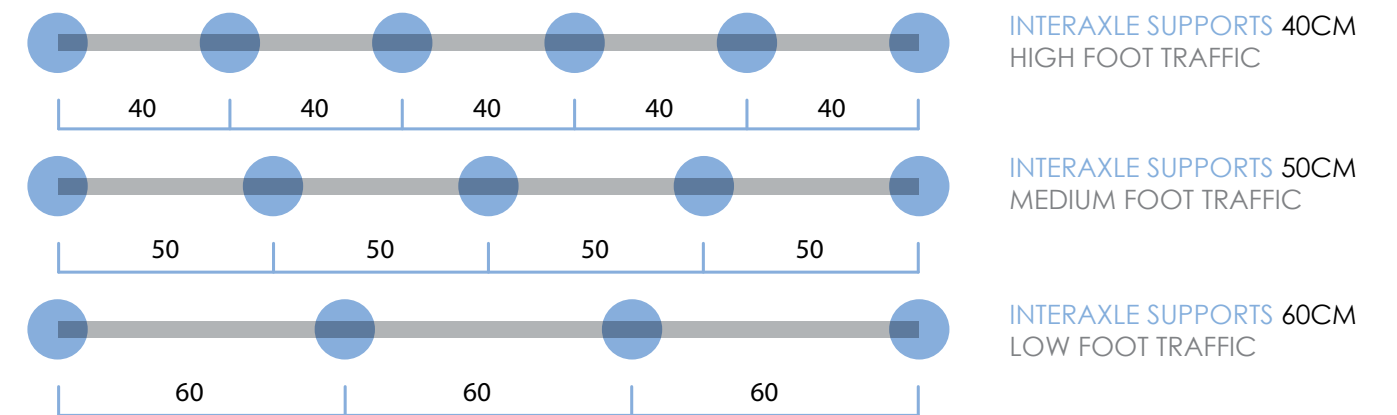
For any application using tiles larger than 32"x32" we recommend the use of a "Central Support" pedestal to be placed at the center of the slab to give greater resistance to the floor.

We also recommend using a pedestal for center support for any areas that will be supporting heavy items like furniture or stone planters etc.

**1** **STEP 1:**  
Determine interaxle spacing between joists and pedestals.



**2** **STEP 2:**  
Once the interaxle spacing has been defined, now calculate the number of pedestals required per square feet.



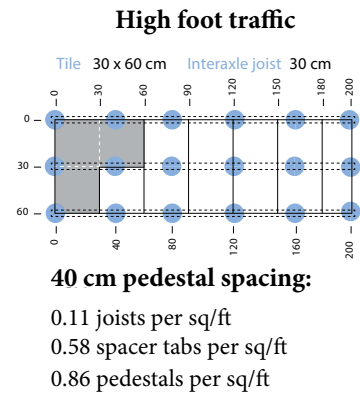
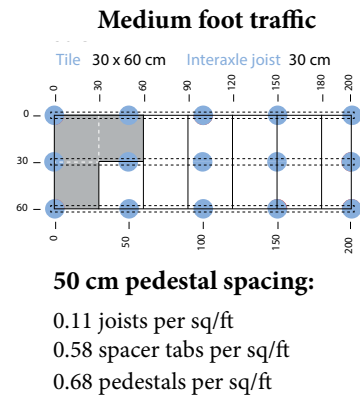
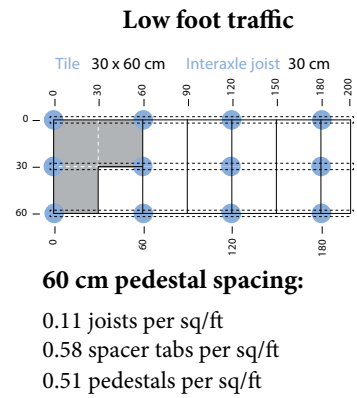
ALUMINIUM JOIST 300 CM	INTERAXLE JOIST A	TILE DIMENSION	JOIST PER SQUARE FOOT	SPACER TABS PER SQUARE FT
	30 cm	30 x 60 cm	0.11	0.58
	40 cm	30 x 120 cm	0.085	0.22
	60 cm	30 x 60 cm	0.056	0.58
		60 x 60 cm		0.29
		60 x 120 cm		0.15

We recommend the installer account for 15-20% overage in their quantities as these calculations are estimates.

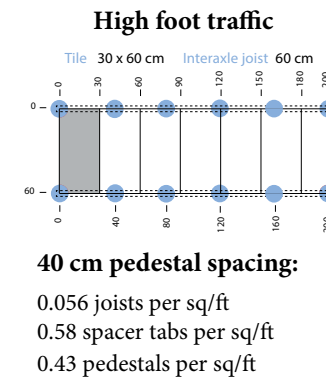
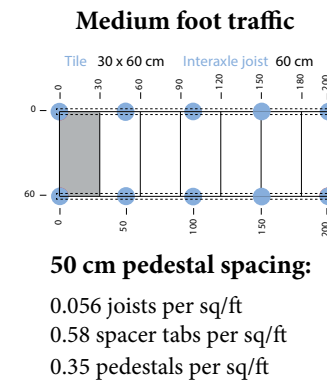
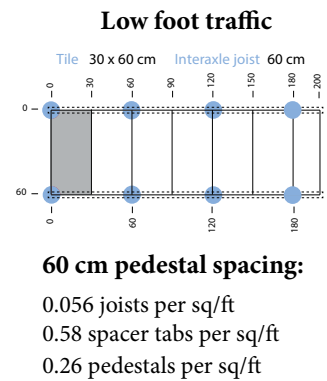
INTERAXLE SUPPORTS B	INTERAXLE JOIST A	PEDESTALS PER SQUARE FOOT
40 cm HIGH FOOT TRAFFIC	30 cm	0.86
	40 cm	0.64
	60 cm	0.43
50 cm MEDIUM FOOT TRAFFIC	30 cm	0.68
	40 cm	0.51
	60 cm	0.35
60 cm LOW FOOT TRAFFIC	30 cm	0.51
	40 cm	0.39
	60 cm	0.26

We recommend the installer account for 15-20% overage in their quantities as these calculations are estimates.

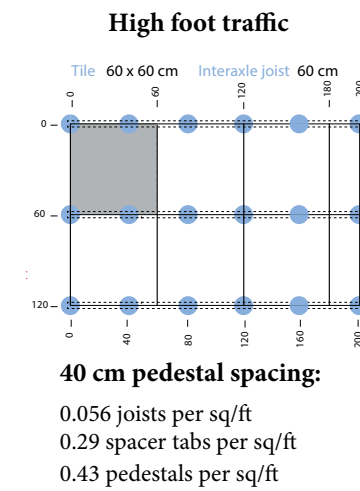
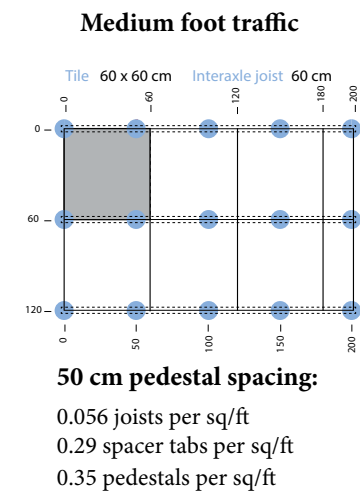
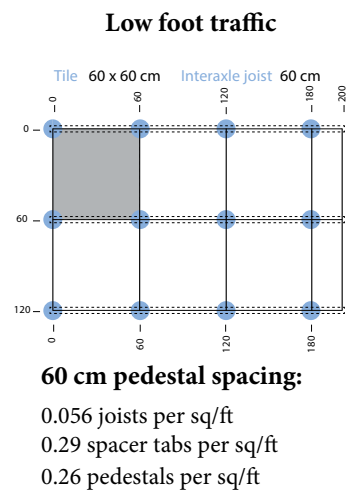
30 x 60 cm paver 30 cm interaxle spacing between joists



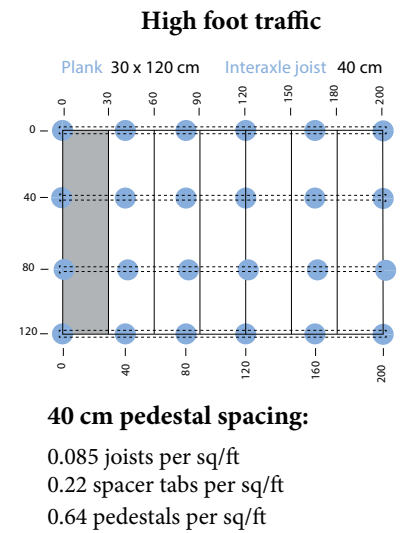
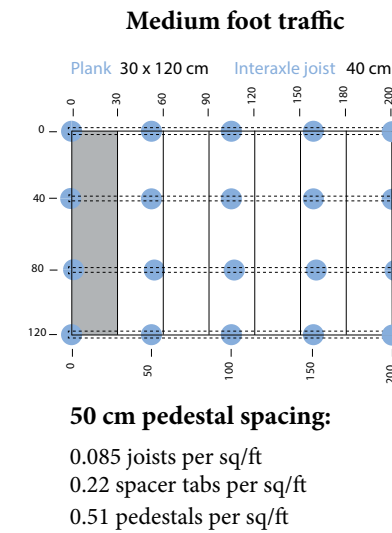
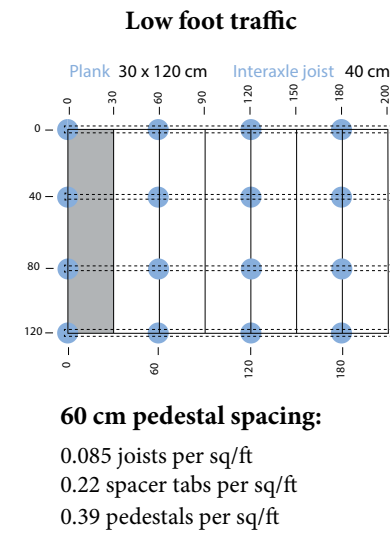
30 x 60 cm paver 60 cm interaxle spacing between joists



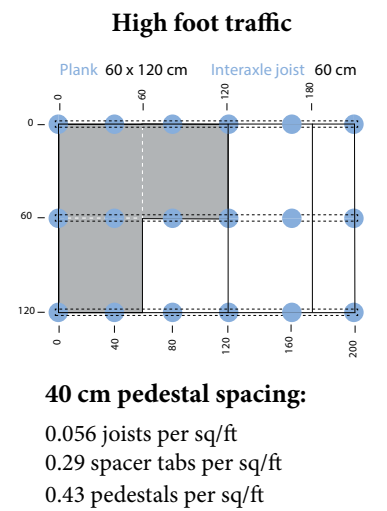
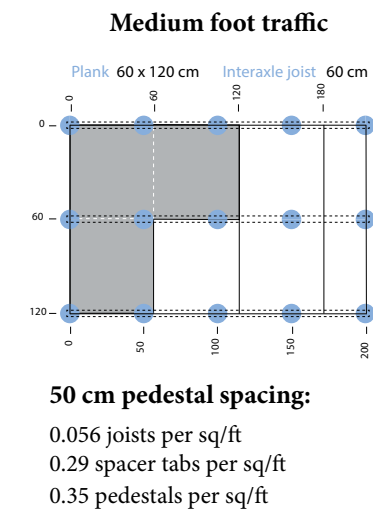
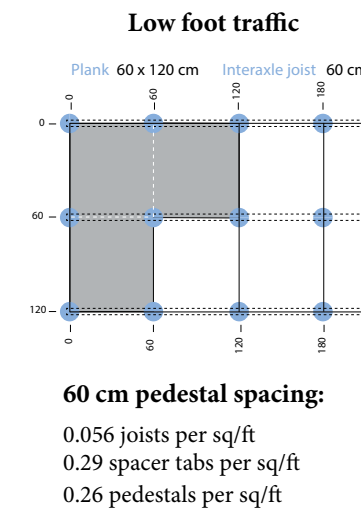
60 x 60 cm paver 60 cm interaxle spacing between joists



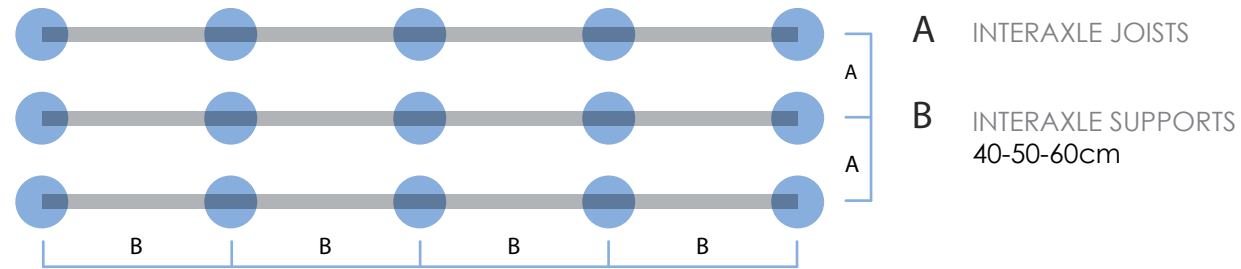
30 x 120 cm paver 40 cm interaxle spacing between joists



60 x 120 cm paver 60 cm interaxle spacing between joists



**1** **STEP 1:**  
Determine interaxle spacing between joists and pedestals.



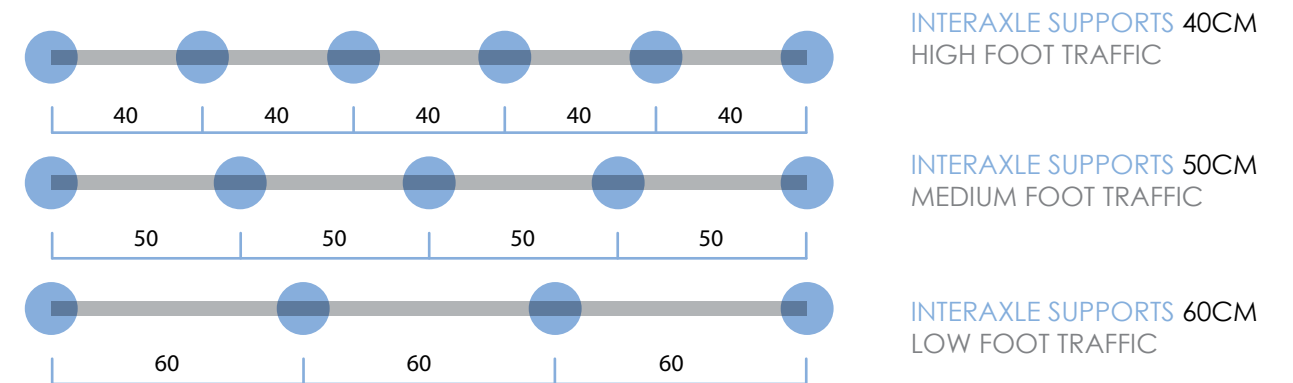
ALUMINIUM JOIST 300 CM	INTERAXLE JOIST A	PLANK DIMENSION	JOIST PER SQUARE FOOT	STARTER CLIPS PER LINEAR FOOT	HIDDEN CLIPS PER LINEAR FOOT
	30 cm	length 95 - 225 cm width 9 - 14.5 cm thickness 1.9 - 3cm	0.11	A	B
	40 cm	length 95 - 225 cm width 9 - 14.5 cm thickness 1.9 - 3cm	0.85	A	B
	50 cm	length 95 - 225 cm width 9 - 14.5 cm thickness 1.9 - 3cm	0.07	A	B

We recommend the installer account for 15-20% overage in their quantities as these calculations are estimates.

**A** To determine starter clips per linear foot:  
1 foot (12" or 300mm) / plank width x 2  
Ex. 300mm / 140mm = 2.14 x 2 = 4.28 clips per linear foot

**B** To determine hidden clips per linear foot:  
1 foot (12" or 300mm) / plank width  
Ex. 300mm / 140mm = 2.14 clips per linear foot

**2** **STEP 2:**  
Once the interaxle spacing has been defined, now calculate the number of pedestals required per square feet.



INTERAXLE SUPPORTS B	INTERAXLE JOIST A	PEDESTALS PER SQUARE FOOT
40 cm HIGH FOOT TRAFFIC	30 cm	0.86
	40 cm	0.64
	50 cm	0.51
50 cm MEDIUM FOOT TRAFFIC	30 cm	0.68
	40 cm	0.51
	50 cm	0.41
60 cm LOW FOOT TRAFFIC	30 cm	0.51
	40 cm	0.39
	50 cm	0.31

We recommend the installer account for 15-20% overage in their quantities as these calculations are estimates.

# ■ TECHNICAL INFO

## PEDESTAL WEIGHT CAPACITY

SYSTEM	PEDESTAL	LOAD CAPACITY
PRO SERIES	EN-CO-A	2300 lbs
	EN-CO-B	2300 lbs
	EN-CO-C	3000 lbs
	EN-CO-D	2900 lbs
	EN-CO-E	3000 lbs
SELF LEVELLING	EN-SLO-A	2800 lbs
	EN-SLO-B	3000 lbs
	EN-SLO-C	3300 lbs
	EN-SLO-D	3300 lbs
	EN-SLO-D + extender	3200 lbs
NON-COMBUSTIBLE STEEL	EN-SP- (168hr neutral salt exposure)	12,500 lbs



[www.enmon.ca](http://www.enmon.ca)

