



Installation Manual for Speedsty Motorsports EKPM Upgraded Board

Please exercise care while installing the included components to avoid causing any harm to the factory manufacturer's components or the ones provided in this kit. If you lack experience in working on cars, it would be advisable to have your kit installed by a nearby BMW Performance shop.



Note: Speedsty Motorsports cannot be held accountable for any damages that may arise or any laws that may be violated during the installation or use of this kit. Please note that this kit is intended solely for use with off-road vehicles.

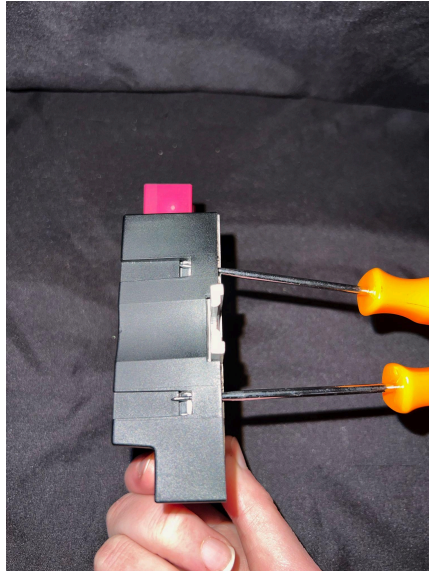
Speedsty Motorsports
Vancouver, Washington 98661
Speedsty.com
sales@speedsty.com

EKPM Upgrade Board Contents

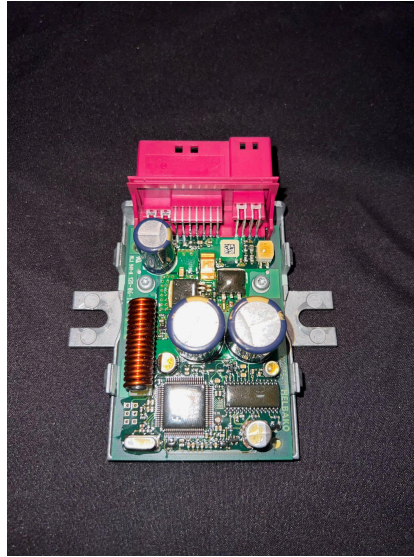
Quantity	Description	Quantity	Description	Quantity	Description
1	EKPM Upgrade Board	1	Grounded Relay Trigger (White wire)	1	(Dual Relay Model Only) Secondary Fuel Pump Power Harness (red wires)

The purpose of this part of the installation guide is to demonstrate how to put together the Speedsty Motorsports EKPM Upgrade Board. If you need instructions on how to remove the EKPM module, please consult your service manual or look for guidance elsewhere.

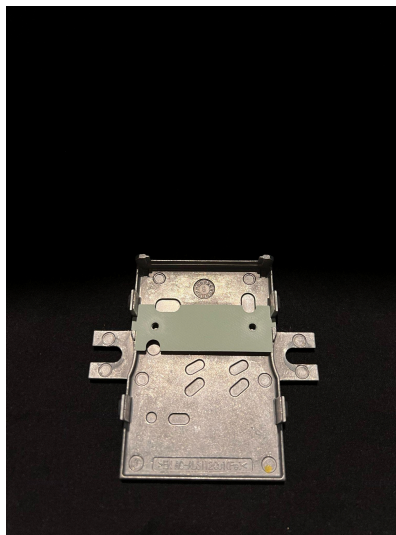
1. Remove your EKPM module (EKPM removal steps varies based on chassis).
2. Remove the cover of your EKPM module by placing two picks under both tabs on either side.



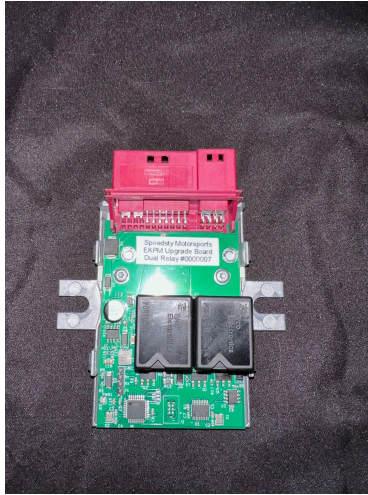
3. Remove both of the T-10 screws.



4. Remove the old board and look for the thermal pad. Occasionally it can be stuck to the back of the board. Do not remove it; leave it in place. (pink/blue strip)
 - a. Do not install the board without a thermal pad in place. This pad acts as electrical insulation and is thermally conductive. If you are missing the thermal pad, contact Speedsty Motorsports (sales@speedsty.com) to order one.



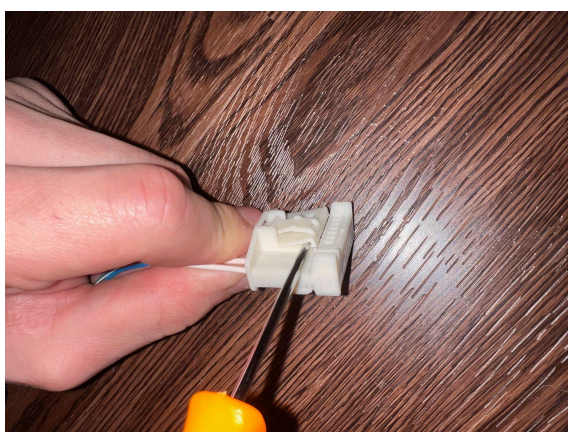
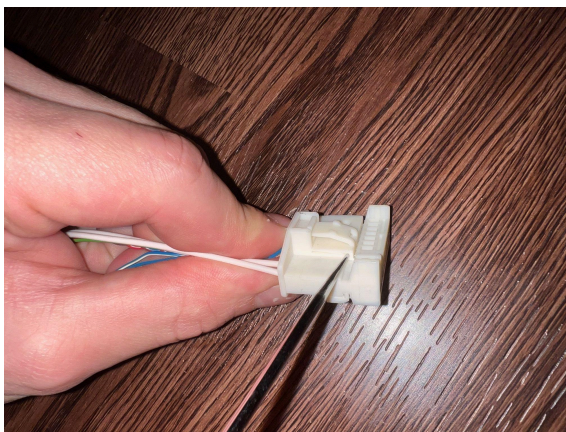
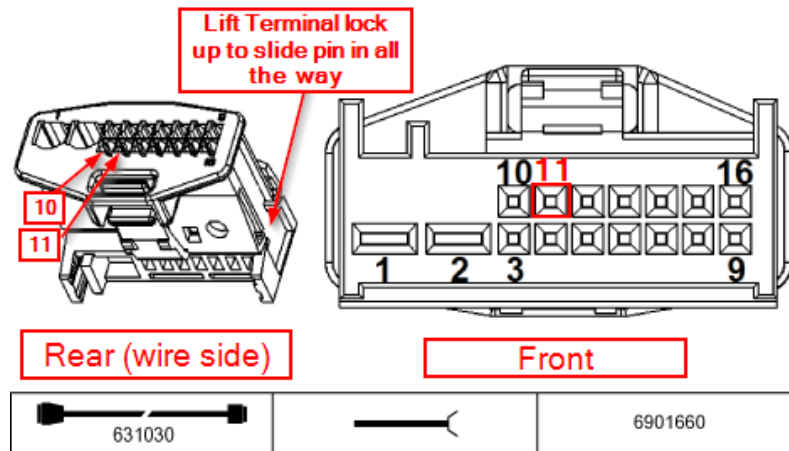
5. Install the EKPM upgrade board with the thermal pad in place.
 - a. Re-tighten both T-10 screws. (Not too tight, as these will strip easily.)



6. Replace the EKPM cover and install it back into the car.
7. Configure the desired grounded or secondary relay trigger. Using the configuration utility available for download on our website (speedsty.com)

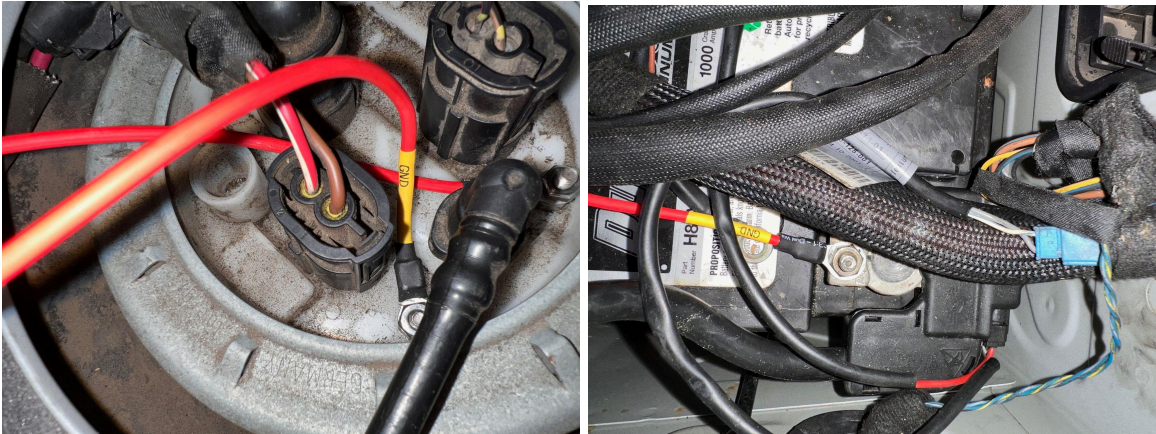
Optional Installation Guide - Grounded Output (White Wire) CANBUS - Single & Dual Relay models only.

1. If you intend to use the grounded output to regulate a relay that manages an extra fuel pump, you can use the provided wire (white) to toggle the ground and activate the relay.
 - a. To connect the grounded output to the EKPM connector pin 11 and subsequently to the coil ground on a relay, you should first use a pick to release the lock tab on the connector. Take care not to apply excessive force, as this could damage the tab. Once the connection to pin 11 has been made (*you should hear a click confirming the pin is fully inserted*), be sure to reinsert and secure the locking tab.

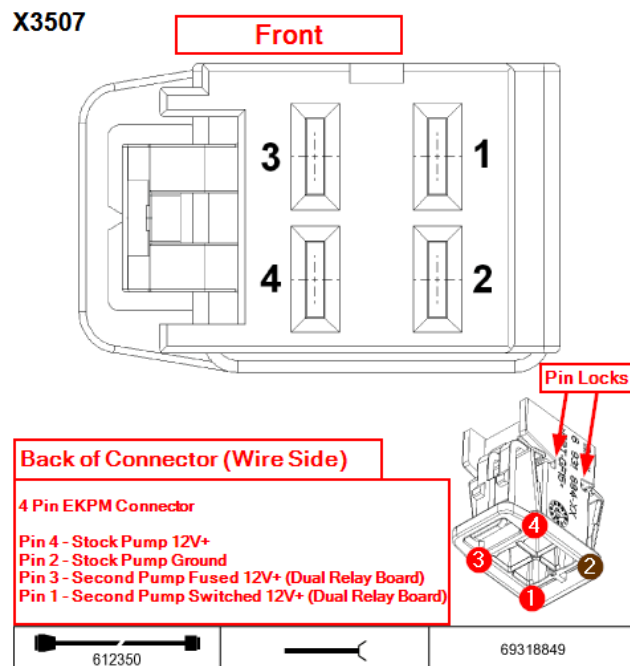


Secondary Fuel Pump Harness Instructions - Dual Relay Model Only

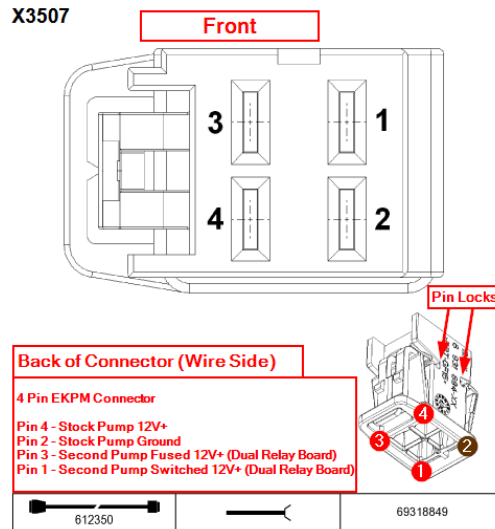
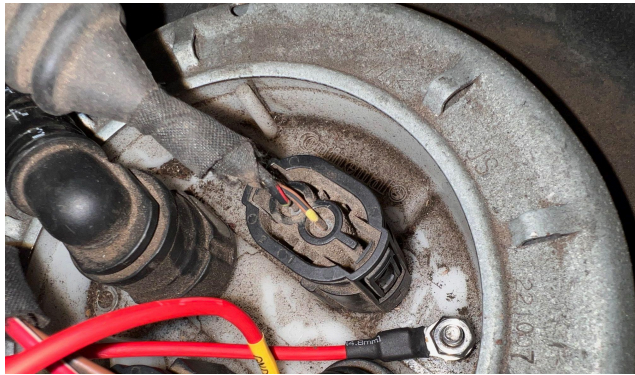
1. The ground wire should be attached to the battery's negative terminal and then connected to the fuel pump's ground.



2. Connect the fused power wire to the positive terminal of the battery and connect it into pin 3 on the black EKPM connector (*make sure you hear a click to confirm it is fully inserted*). (You should first use a pick to release the lock tab on the connector. Take care not to apply excessive force, as this could damage the tab. Once connected, put the locking tab back into place)



3. Insert the switched power into pin 1 on the black EKPM connector (*make sure you hear a click to confirm it is fully inserted*) and connect it to the positive terminal on your fuel pump.



4. Configure trigger source/value

NOTE: Be sure the polarity of the fuel pump is correct, or the fuel pump will run in reverse.