



JUICE BAR SOLUTIONS

SERVING THE FOOD INDUSTRY SINCE 1951

CHROME MANUAL JUICE EXTRACTOR



SERVE FRESHLY SQUEEZED DRINKS ANYTIME

- ▶ Perfect for bars, smoothie stands, and restaurants

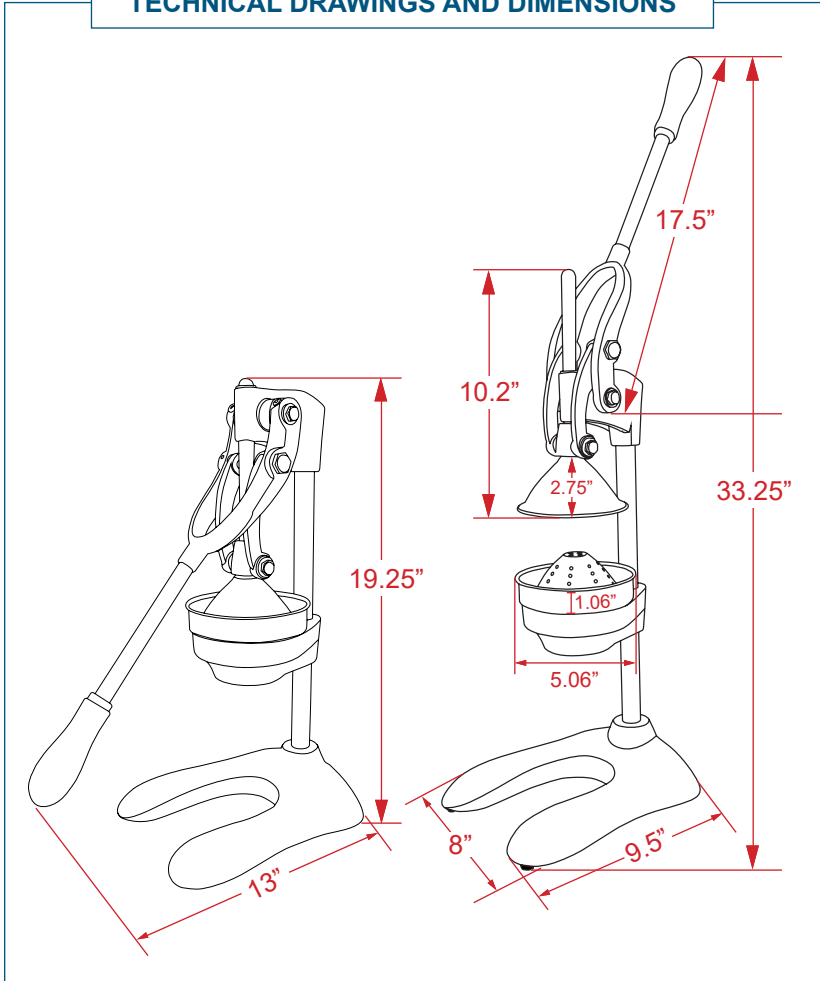
Ideal for extracting citrus juices, this manual juice extractor is ergonomically designed to make your juicing experience easy and efficient. Easy to use.



WARRANTY



TECHNICAL DRAWINGS AND DIMENSIONS



Ideal for

Orange

Lime

Lemon

Pomegranate



CHROME MANUAL JUICE EXTRACTOR WITH 5" CUTTER PLATE DIAMETER

ITEM NUMBER	23575
CUTTER PLATE DIAMETER	5" / 127 mm
MATERIAL	Chrome
WEIGHT	13 lbs. / 5.91 kg.
PACKAGING WEIGHT	14 lbs. / 6.36 kg.
DIMENSIONS (DWH)	9.5" x 8" x 33.25" / 241.3 x 203.2 x 844.55 mm
PACKAGING DIMENSIONS	11" x 8" x 20" / 279.4 x 203.2 x 508 mm

OMCAN INC.

Telephone: 1-800-465-0234

Fax: (905) 607-0234

Email: sales@omcan.com

Website: www.omcan.com



Follow us to keep up to date with the latest news and offers



2016.E.O.E



JUICE BAR SOLUTIONS

SERVING THE FOOD INDUSTRY SINCE 1951

CAST-IRON RED MANUAL JUICE EXTRACTOR

SERVE FRESHLY SQUEEZED DRINKS ANYTIME

- ▶ Perfect for bars, smoothie stands, and restaurants

Ideal for extracting citrus juices, this manual juice extractor is ergonomically designed to make your juicing experience easy and efficient. Easy to use.

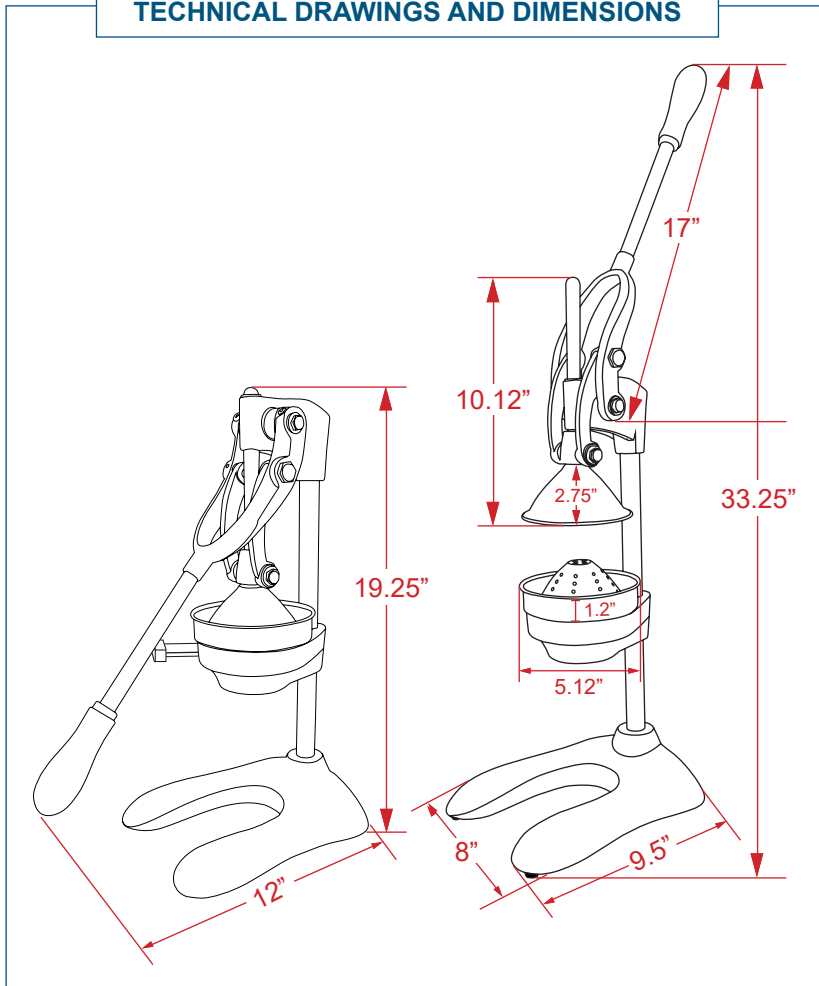


WARRANTY



Authorized Dealer

TECHNICAL DRAWINGS AND DIMENSIONS



Ideal for

Orange

Lime

Lemon

Pomegranate

CAST-IRON RED MANUAL JUICE EXTRACTOR WITH 5" CUTTER PLATE DIAMETER

ITEM NUMBER	23576
CUTTER PLATE DIAMETER	5" / 127 mm
MATERIAL	Cast Iron-Red
WEIGHT	18.5 lbs. / 8.41 kg.
PACKAGING WEIGHT	19 lbs. / 8.64 kg.
DIMENSIONS (DWH)	9.5" x 8" x 33.25" / 241.3 x 203.2 x 844.55 mm
PACKAGING DIMENSIONS	15" x 8.5" x 20" / 381 x 215.9 x 508 mm

OMCAN INC.

Telephone: 1-800-465-0234

Fax: (905) 607-0234

Email: sales@omcan.com

Website: www.omcan.com



Follow us to keep up to date with the latest news and offers



2016.E.O.E