



EASYCAP

EEG Recording Caps and Related Products

EASYCAP GmbH
Am Anger 5
82237 Wörthsee
GERMANY

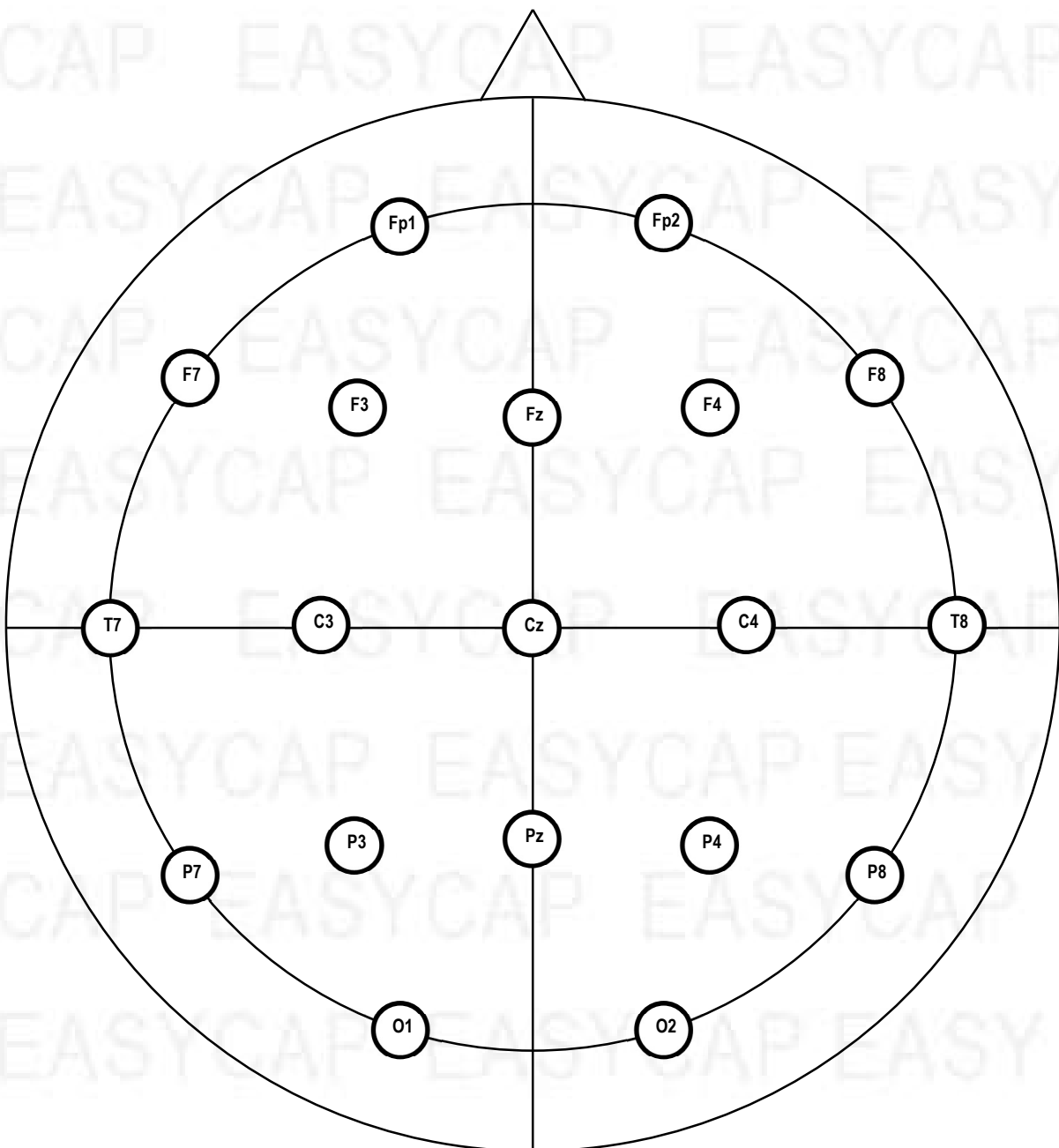
Tel +49 8153 88702-00
Fax +49 8153 88702-10
www.easycap.de
info@easycap.de

Landmark Cap

A tool to facilitate correct positioning

This cap shows the 19 core positions of the International 10/20-System. The 10/20-System represents an international standardized guidance for positioning EEG electrodes in a reproducible manner.

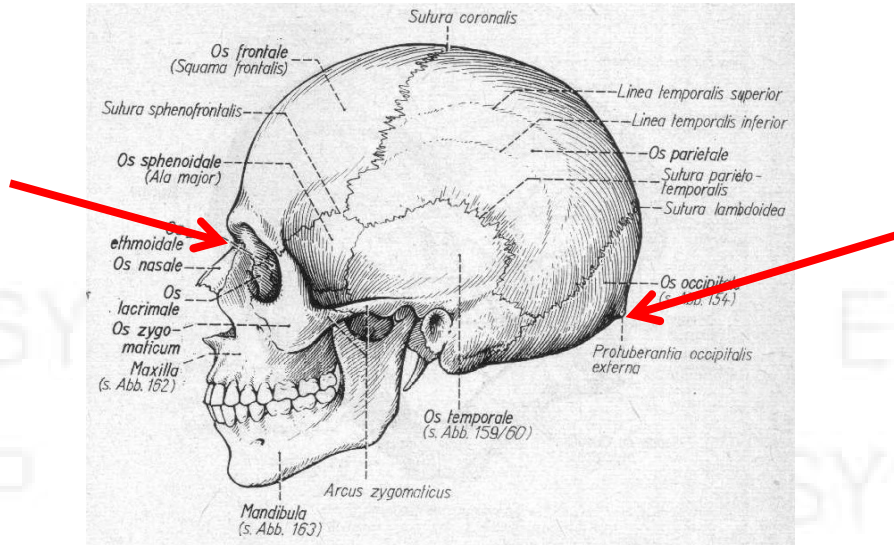
The names of electrode positions point at the approximate brain region of their location: Fp = frontopolar, F = frontal lobe, C = central lobe, T = temporal lobe, P = parietal lobe, O = occipital lobe. Odd numbers designate positions on the left hemisphere, even numbers positions on the right hemisphere, "z" on the central line.



The cap is placed in relation to the anatomical landmarks Nasion and Inion:

Nasion is the deepening between nose and forehead

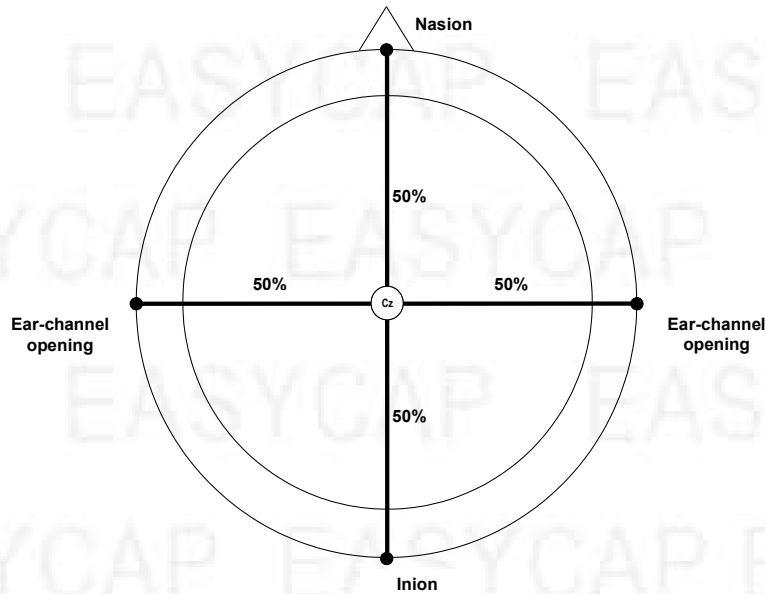
Inion is the lowest palpable rim of the back of the headbone before it descends towards the spine



Landmark-Cap-Sizes denote the head circumference in centimeter the cap is made for.

Measure the head circumference and choose the cap size equal or slightly larger.

Measure the distance from Nasion to Inion over the head with a measuring tape, then put on the cap and place Cz half-way. Also make sure the cap is left-right symmetric.



Now close the chin belt. The chin belt tension is correct when Fp1/Fp2 and O1/O2 do not form an angle with T7/T8. When viewed from the side they should all be in the same plane:



Cleaning suggestion: The cap can be cleaned in luke-warm soap water, or in a washing machine at 30° celsius using a mild detergent. Do not put in dryer, do not iron. Best let it air dry.

Catalogue-name: LM-UCMW-# for white cap, LM-UCMS-# for black cap, please replace # by requested head circumference. We also offer special cap cuts for Asian head shapes