

WEBSITE:

<https://www.bull-x.co.uk/>

YOUTUBE:

@bull-xtv

FB ~ FALCONRY:

<https://m.facebook.com/bullxprotraininghawks/>

FB ~ DOGS:

<https://m.facebook.com/bullxProTraining/>

INSTAGRAM:

<https://instagram.com/bullxprotraining/>

OFFICIAL MERCH:

<https://teespring.com/en-GB/stores/bullxprotraining-store>

+44 7855227347

danny@bull-x.co.uk

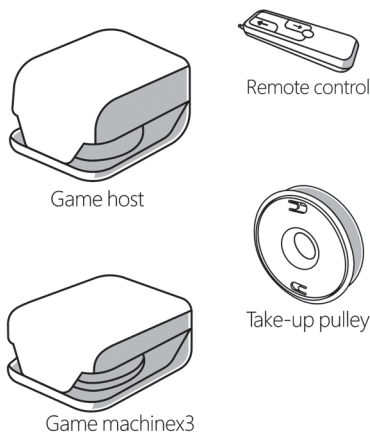
BullxProTraining
Chatsworth Workshops
Lambhouse Lane
Shottle
Belper
DE562DS
United Kingdom



OPERATING MANUAL

Product parameters

Product accessories

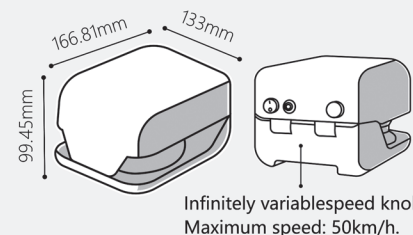


Product parameters

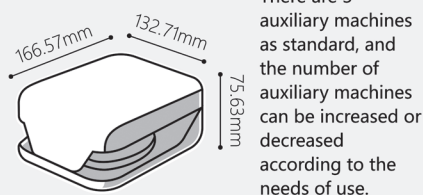
Product information

Product brand Bull-X	Product name Bull-X Mini 'Lite'
Product number coursing5000	Product weight 2.8kg
500 square meters 500 square meters	Product material ABS
Product accessories Game host, game sub-machine x3, remote control, Charging line, take-up pulley (including bait wire)	

Game host

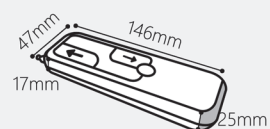


Game machine



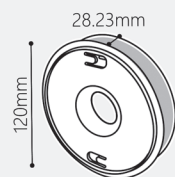
Remote control

Control the direction of bait movement.



Take-up pulley

Auxiliary take-up for easy play.



OPERATING MANUAL

Product warranty

Warranty

- The warranty period starts from the date of receipt, and the whole machine is guaranteed for one year (except bait wires and batteries).
- Within the scope of the warranty, do not disassemble the machine by yourself for any fault caused by the quality problem of the product itself, otherwise you will lose the product warranty right, and the company will not bear any responsibility for any quality problems or accidents caused by this.
- The following situations are not within the scope of free warranty.
 - Damage caused by consumers due to improper use, maintenance and storage;
 - Damage caused by disassembly of the product by non-company maintenance personnel;
 - There is no purchase certificate or does not match the product model;
 - Damage caused by force majeure;
 - Warranty period.
- In order to facilitate product maintenance, please keep the dog walker box for more than half a year.
- For product maintenance other than free maintenance, we will charge material fees in order to provide you with better service.

i Statement: Please use the standard accessories provided by the company to ensure the high-quality and efficient operation of the product. If the product fails due to the use of other accessories, the company will not be responsible for the warranty.

Product warranty

Warranty Card

Product number	Installation address
Date of purchase	Shopping place
User phone	User mailbox
installation time	

Warranty record

maintenance date	Warranty content	Replacement Parts Record	Undertaker	user signature



BULL-X MINI 'LITE'

OPERATING MANUAL

OPERATING MANUAL

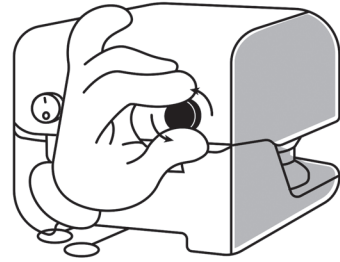
The BullX Mini 'Lite' will be Interactive fun for you and your dog

But dogs can't use a dog walker all day. Because dogs usually try their best to chase the bait, if you don't fully understand the dog's physical condition, it may cause injury due to excessive exercise.

Precautions

Adjustable speed mode Safer to use

A variable speed knob lets you adjust to your dog's age, size, and athleticism, mastering the length and duration of each run. It can be difficult to tell if a dog is tired before a run, so stop after a few laps and watch for signs of fatigue such as (tongue sideways, foaming at the mouth, shaky legs or eyes that won't open).



Precautions

Same with any new workout start slowly

Prevent your dog from sore legs and overexertion. Generally, we recommend that dogs be over 12 months old, or have healthy bones before doing this exercise. If your dog has a history of bone health problems, check with your veterinarian before starting this exercise.

Reminder

We recommend trimming the dog's nails before exercising, and monitoring the separation of the paw pads at any time, and wearing shoes and socks for the dog if possible. Don't let them drink too much water immediately after a run.

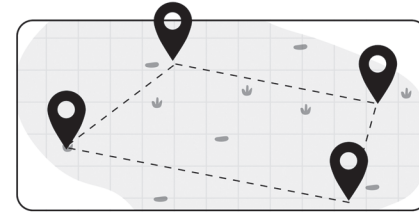


OPERATING MANUAL

Steps for usage

1 Planning range

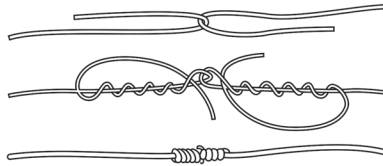
Plan out the area where your dog will be running, and then do an inspection. Clean up any debris such as broken glass, sticks, bottle caps, anything that could harm your dog.



Steps for usage

4 Rope method

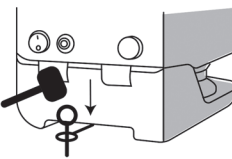
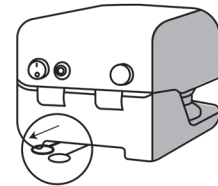
Blood knot lanyards are recommended. He can place the frayed ends in the middle of the knot so that he is less likely to snag on obstacles.



Steps for usage

2 stationary machine

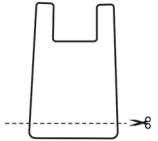
Pull out the pin and elongate Silicone safety rope.



Put the nail through the safety rope. The round hole is inserted into the ground.

Steps for usage

5 handling bait

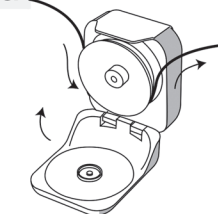


Remember to cut off the bottom of the bag. Otherwise, the bag will expand and cannot pass through the machine well. You can also choose light and thin items that dogs like bait, such as triangular towels, non-woven fabrics, and paper towels.

Steps for usage

3 rope around

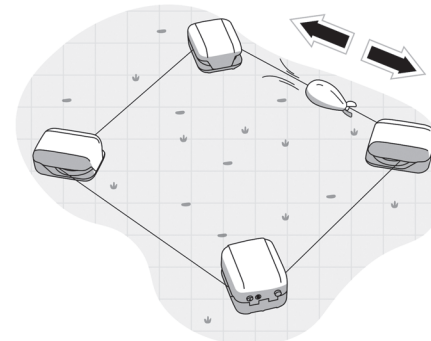
Turn the machine on and wind the rope in.



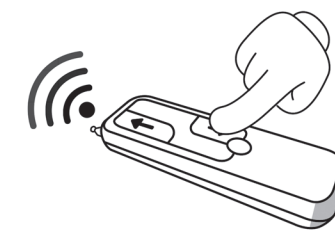
OPERATING MANUAL

Steps for usage

6 Remote control



Remote control can control the leash Forward and reverse direction movement

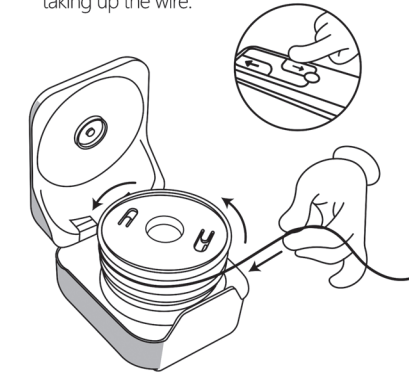
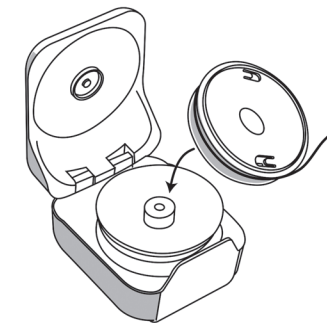


Steps for usage

7 Auxiliary take-up

Open the cover of the host machine and put the take-up pulley directly.

Press the remote control to assist in taking up the wire.



Reminder

In any scene, dampness or machine water should be avoided, and the sand and dust should be cleaned up in time after the game

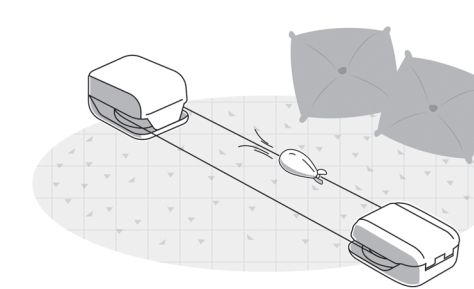


OPERATING MANUAL

Scene application

1 + 1 Combination

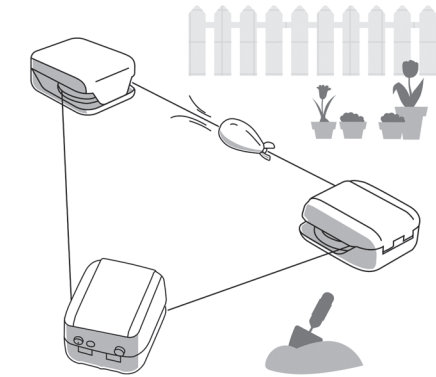
Suitable for living room, bedroom, relatively large room.



Scene application

1 + 2 Combination

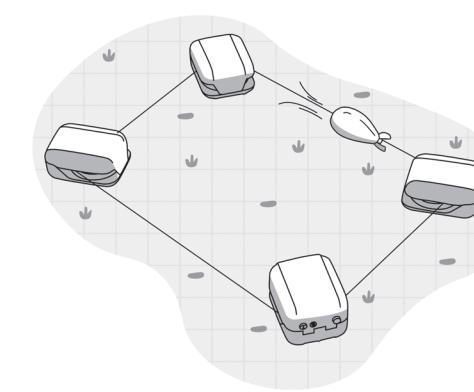
Good for small yards.



scene application

1 + 3 Combination

Suitable for parks, beaches, outdoor grass.



scene application

1 + N Combination

Suitable for dog training grounds, pet parks.

