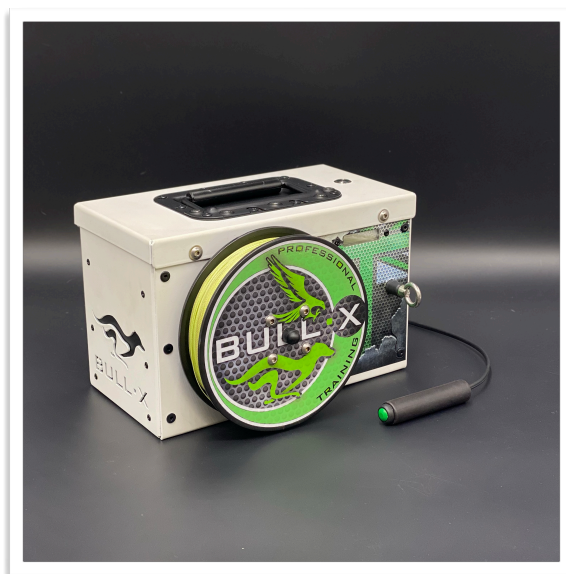


24v BullX Mini Lure Machine (Thumb Control Model)

TOP TIPS



- NOTE: THE AGM BATTERY IN YOUR MACHINE SHOULD BE FULLY CHARGED AFTER USE TO GET MAXIMUM LIFE.
- DO NOT RUN YOUR MACHINE ON A FLAT BATTERY.
- DO NOT LET YOUR DOGS RUN OFF WITH THE LURE ATTACHED TO THE LINE, YOU WILL GET TANGLED!
- IT IS EXTREMELY IMPORTANT THAT YOU DO NOT OPERATE THE MACHINE WITH OUT A LURE ATTACHED. THE MOTOR IS DESIGNED TO PULL AND NOT FREE WHEEL... YOU RISK DAMAGING YOUR MOTOR IF YOU OPERATE YOUR MACHINE HIGH SPEED WITH OUT ANY LOAD!
- WHEN YOU HAVE PULLED YOUR CHOSEN LURE OUT INTO THE FIELD, RETURN TO THE MACHINE AND CHECK THE LINE IS TAUGHT. IF IT IS SLACK YOU WILL RISK THE LINE JUMPING BEHIND THE WHEEL!
- STOP THE LURE A SAFE DISTANCE AWAY FROM YOUR MACHINE. PLEASE DO NOT DRAG THE LURE IN UNTIL IT HITS THE MACHINE!
- MUZZLE YOUR DOGS IF YOU CAN...
- ALWAYS USE YOUR MACHINE LEGS IN THE BASE OF YOUR MACHINE TO SECURE YOUR MACHINE IN THE FIELD BY CAREFULLY PUSHING INTO THE GROUND.
- USE IN A SHORT GRASS FIELD.
- MAXIMUM LURE WEIGHT IS 1.5lb USING 1 PULLEY.
- IF YOU HAVE PULLEY'S, DO NOT HAMMER OR STAMP THEM INTO THE GROUND. SIMPLY PUSH IN BY HAND.
- TO CHECK THE BATTERY LEVEL, TURN THE SPEED DIAL TO OFF AND PRESS YOUR THUMB CONTROL, THE LCD SCREEN WILL LIGHT UP DISPLAYING YOUR BATTERY %
- ENJOY BullxProTraining



If you need further help, please contact us for more information on how to use our products.

- We accept no responsibility for any damage or injury caused by the misuse of these machines.
- 2 years warranty on all products, free replacements or repairs within this time period. Products will need to be sent back to us for repair or be replaced.
- Shipping costs back to us are not covered by BullX.
- Warranty is void if the machines are used with third party accessories such as home made pulley's.
- Returns accepted within 14 days of purchase. Products **MUST** be returned in the exact same condition (**BRAND NEW**) as they were received for a full refund. Partial refunds will be made if the products are used in any way.

danny@bull-x.co.uk



Click the link  **BullX TV**