



I KECHO

A U S T R A L I A

8th Edition Product Catalogue

3

SOUTH SEA

Australian South Sea Pearls are famous all over the world because of their exceptional lustre and amazing iridescent white to creamy colours.

15

TAHITIAN

Also known as "Black South Sea Pearls" and are the most celebrated natural black pearls found in the world.

21

AKOYA

Akoya Pearls are considered the classic cultured pearl. Akoya oysters rarely produce more than 2 pearls per harvest.

23

MABE

Mabe pearls are half round or dome shaped pearls grown on the inside of the oyster.

27

FRESHWATER

Freshwater Pearls are the most common type of pearl. They come in an array of colours which is a big advantage over saltwater varieties and it makes them highly versatile for jewellery.

51

FWP EDISON

Freshwater Edisons Pearls are cultivated similar to Akoya & South Sea by inserting one bead into the mussel tissue of the oyster.

63

BAMBINI

Freshwater Pearl designs especially for the young ones.

65

OPALS

Opal is one of the most unique gem stones in the world and is classified at the National Gemstone of Australia.



Ikecho Australia (pronounced i-ket-cho) is an Australian brand of the world's finest quality pearls and opals since 1999. Ikecho prides itself on creating exciting and contemporary pearl designs, which follow the world's trends and fashion movements.

The name Ikecho was chosen as it is believed it was the first freshwater mussel used to cultivate pearls in Japan; Erica wanted her company to be thought of as the home of freshwater pearls in Australia. The Ikecho team have a fresh and enthusiastic approach to their work and have a tremendous passion for changing the stereotypical view of pearls.

Ikecho was also the first pearl company to import natural pink pearls to Australia. The Edison Collection continues to be our best selling collection due to likeness to south sea pearls without the expensive price tag.

In the late 2017, Ikecho has started incorporating Opals in their range and supplies Solid Boulder and Black Opal jewellery which are sourced from Erica's father's mines in Winton, QLD and Lightning Ridge, NSW.

Ikecho has also released beautiful designs incorporating Solid Australian Opal with Australian South Sea Pearls. It is impossible to find two opals that are the same which makes these pieces extra special and unique.

In the late 2019, Ikecho introduced the Bambini Collection which caters for the young ones which includes stud earrings, bracelets and strands available in sterling silver. The collection was inspired by Erica's daughter, Charlize - little girls love wearing pearls!

Ikecho Pearls currently enlists over 195 premium branded stockists who proudly showcase a range of our jewellery in store. For a complete listing, simply visit ikecho.com.au or if you would like to become a Branded Stockist, please contact your local representative or call our head office.

SOUTH SEA

Australian South Sea Pearls are famous all over the world because of their exceptional lustre and amazing iridescent white to creamy colours.



- The Australian South Sea pearl oyster (Pinctada maxima) is the largest and rarest of all pearl oysters and produces the largest and most valuable pearls in the world

- The South Sea pearl oyster is bead-nucleated and is cultured in saltwater along the northwest coast of Australia. Pearls of the golden variety are also produced primarily in the Philippines and Indonesia

- White South Sea pearls generally retain the highest value of all pearl types of pearls because of their large size range and unique luster quality

- Silver-lipped South Sea pearl oysters generally produce pearls in the white, silver, aqua and blue family of overtones. The gold-lipped variety produces the cream, champagne, and deeper golden variety.

- South Sea pearls can be found in the range of 8 to 20 mm, with the average being 12 mm. Although extremely rare, some pearls have been found larger than 20 mm.



IP52-EWS10/PWS12

18ct wg Broome South Sea drop 10mm diamond earrings 0.20ct and 12mm drop enhancer 0.16ct



IP118-EWS12/PWS13

18ct wg Broome South Sea drop 12mm drop diamond star earrings 0.20ct and 13mm drop pendant 0.10ct



IP130-EWS11/IP166-PWS12

18ct wg Broome South Sea drop 11mm diamond earrings 0.25ct & 12mm drop pendant 0.08ct



IP779-EWS12

18ct wg Broome South Sea drop 12mm diamond earrings 0.32ct



IP406-EWS11

18ct wg Broome South Sea drop 11mm diamond earrings 0.42ct



IP011-EWS10

18ct wg Broome South Sea drop 10mm diamond earrings 0.10ct



IP526-EWS10/PWS12

18ct wg Broome South Sea drop 10mm diamond earrings 0.12ct and 12mm drop enhancer 0.15ct



IP111-9EWS11/9PWS13

9ct wg Broome South Sea drop 11mm diamond hook earrings 0.04ct and 13mm enhancer dia 0.05ct



IP764-EWS12

18ct wg Broome South Sea drop 12mm diamond earrings 0.31ct



IP779-PWS14

18ct wg Broome South Sea drop 14mm diamond pave pendant 0.23ct



IP404-PWS13

18ct wg Broome South Sea drop 13mm diamond enhancer 0.18ct



IP028-PWS13

18ct wg Broome South Sea drop 13mm diamond pave enhancer 0.035ct



IP174-EWS11

18ct wg Broome South Sea drop 11mm wide pave diamond earrings 0.15ct



IP624-EWS11

18ct wg Broome South Sea drop 11mm diamond earrings 0.45ct



IP30-EWS10

18ct wg Broome South Sea drop 10mm diamond huggy earrings 0.12ct



IP619-PWS13

18ct wg Broome South Sea drop 13mm diamond pendant 0.20ct



IP907-PWS12

18ct wg Broome South Sea drop 12mm diamond pendant 0.164ct



IP518-PWS13

18ct wg Broome South Sea drop 13mm diamond pendant 0.39ct



IP1005-9RWS9

9ct wg Broome South Sea
round 9mm diamond ring 0.04ct



R008-RWS12

18ct wg Broome South Sea
button 12mm ring



IP266-9RWS10

9ct wg Broome South Sea
button 10mm ring



IP631-9RWS12

9ct wg Broome South Sea
round 12mm diamond ring 0.55ct



IP4439-RWS10-9CT

9ct wg Broome South Sea
round 10mm diamond ring 0.115ct



IP778-RWS10-9CT

9ct wg Broome South Sea
round 10mm diamond ring 0.312ct



IP7876-RWS14

18ct wg Broome South Sea
baroque 14mm diamond ring 0.285ct



IP1143-RWT9-9CT

9ct wg Broome South Sea/Tahitian
round 9mm diamond ring 0.04ct



IP633-9RWS11

9ct wg Broome South Sea
round 11mm diamond ring 0.51ct



IP633-RWSB12

18ct wg South Sea button 12mm
black sapphire ring 0.31ct



IP633-PWSB13

18ct wg South Sea drop 13mm
black sapphire enhancer 0.29ct



IP633-PWSP13

18ct wg South Sea drop 13mm
pink sapphire pendant 0.29ct



IP070-EYS10/PYS11

18ct yg Broome South Sea
round 10mm earrings 0.22ct
and 11mm round pendant 0.11ct



IP1002-EYS11/PYS12

18ct yg Broome South Sea
round 11mm earrings
and 12mm round pendant



IP111-9EYS11/PYS13

9ct yg Broome South Sea drop 11mm
shepherd hook diamond earrings 0.04ct
and 13mm diamond enhancer 0.05ct



IPS8MM-9Y

9ct yg Broome South Sea 8mm round
strand with Ikecho oval clasp



IPS910-9Y

9ct yg Broome South Sea round 9-10mm
strand with Ikecho oval clasp



IPS1011-9Y

9ct yg Broome South Sea 10-11mm
round strand with Ikecho oval clasp



IP767-EYS10/IP767-PYS11

9ct yg Broome South Sea round 10mm
hook earrings and 11mm pendant



IP767-EYS12

9ct yg Broome South Sea
round 12mm hook earrings



IP102-EYS11

18ct yg drop 11mm Broome South Sea
shepherd hook earrings



IPS1012-9W

9ct wg Broome South Sea round
10-12mm strand with Ikecho oval clasp



IP581B-9Y

9ct yg South Sea oval
10-11mm bracelet



IP581B-9W

9ct wg South Sea oval
10-11mm bracelet



IP19-EY-SD10

9ct yg Broome South Sea white drop
10mm shepherd hook earrings



IP226-9EYS9

9ct yg Broome South Sea drop 9mm
diamond earrings 0.03ct



IP901-EYS10-9

9ct yg Broome South Sea drop 10mm
diamond shepherd hook earrings 0.08ct



IP106-EYS10

18ct yg Broome South Sea drop 10mm shepherd hook earrings



IP144-9EYS10

9ct yg Broome South Sea drop 10mm shepherd hook earrings



IP9CLIP-S/SEA

9ct yg Broome South Sea round 8mm clip on earrings



IP779-EYS12-9

9ct yg Broome South Sea drop 12mm diamond huggy earrings 0.32ct



IP406-EYS10-9D

9ct yg South Sea drop 10mm diamond earrings 0.42ct



IP050-EYS10

18ct yg Broome South Sea round 10mm diamond stud earrings 0.10ct



IP30-9EYS10

9ct yg Broome South Sea drop 10mm pave diamond huggy earrings 0.12ct



IP34-EYS11

18ct yg Broome South Sea drop 11mm diamond large huggy earrings 0.13ct



IP178-EYS11

18ct yg Broome South Sea drop 11mm huggy earrings



IPS8MM-9EYS8

9ct yg Broome South Sea 8mm round stud earrings with silicon butterflies



IPS9MM-9EYS9

9ct yg Broome South Sea 9mm round stud earrings with silicon butterflies



IPS10MM-9EYS10

9ct yg Broome South Sea 10mm round stud earrings with silicon butterflies



IP029-EYS10

18ct yg Broome South Sea drop 10mm shepherd hook earrings



IP111-9ERS11

9ct rg Broome South Sea drop 11mm diamond shepherd hook earrings 0.04ct



IP108-9ERS10

9ct rg Broome South Sea drop 10mm shepherd hook earrings



IPS11MM-9EYS11

9ct yg Broome South Sea 11mm round stud earrings with silicon butterflies



IPS12MM-9EYS12

9ct yg Broome South Sea 12mm round stud earrings with silicon butterflies



IPP121-9PYS13

9ct yg Broome South Sea drop 13mm diamond enhancer 0.06ct



IP222-PYS13

18ct yg Broome South Sea drop 13mm enhancer



IP260-PYS13

18ct yg Broome South Sea drop 13mm pendant



IP138-9PYS13

9ct yg Broome South Sea 13mm drop enhancer



IP061-PYS12

18ct yg Broome South Sea drop 12mm pendant



IP244-PYS13

18ct yg Broome South Sea drop 13mm pendant



IP241-9PYS11

9ct yg Broome South Sea drop 11mm pendant



IP187-PYS11

18ct yg Broome South Sea drop 11mm pendant



IP259-PYS10

18ct yg Broome South Sea drop 10mm pendant



IP269-PYS11

18ct yg Broome South Sea drop 11mm enhancer



IP214-9PYS11

9ct yg Broome South Sea drop 11mm diamond pendant 0.04ct



IP054-PYS13

18ct yg Broome South Sea drop 13mm pendant



IP1006-PYS9-9

9ct yg Broome South Sea drop 9mm diamond pendant 0.04ct



IP012-PYS13

18ct yg Broome South Sea drop 13mm enhancer



IP068-PYS13

18ct yg Broome South Sea drop 13mm enhancer



IP063-PYS13

18ct yg Broome South Sea drop 13mm pendant



IP010-PYS13

18ct yg Broome South Sea drop 13mm diamond enhancer 0.05ct



IP500-9YGD-S11

9ct yg Broome South Sea white round 11.5-12mm adjustable basket necklace 50, 60, 70cm with diamond 0.066ct



IP500-14RGD-S11

14ct rg Broome South Sea white round 11.5-12mm adjustable basket necklace 50, 60, 70cm with diamond 0.066ct



IP778-RYS10-9CT

9ct yg Broome South Sea round 10mm diamond ring 0.312ct



IP1143-RYS9-9CT

9ct yg Broome South Sea white & natural gold 9mm diamond ring 0.04ct



IP255-RYS9-9KY

9ct yg Broome South Sea round 9mm diamond ring 0.10ct



IP266-9RYS10

9ct yg Broome South Sea button 10mm ring



IP770-RYS13

18ct yg Broome South Sea button 13mm diamond ring 0.076ct



IP777-RYS11

18ct yg Broome South Sea round 11mm diamond ring 0.20ct



IP769-RYS10

18ct yg Broome South Sea round 10mm diamond ring 0.24ct



IP620-RYS10

18ct yg Broome South Sea round 10mm ring



IP776-RYS11

18ct yg Broome South Sea round 11mm diamond ring 0.25ct

TAHITIAN

Also known as "Black South Sea Pearls" and are the most celebrated natural black pearls found in the world.



• Tahitian South Sea pearls are considered to be the second most valuable commercially farmed pearls in the world.

• Tahitian pearls are bead-nucleated and cultured in saltwater, produced by the Pinctada Margaritifera oyster, which is found exclusively in Tahiti and several other French Polynesian islands.

• Tahitian pearls are bead-nucleated, typically with a thick nacre. The thinnest nacre allowed by French Polynesian law for export is 0.8 mm

• Tahitian pearls are cherished for their incredibly exotic colors and mirror-like luster, they consist of hundreds of natural overtones such as peacock green, silver grey, peacock and deep black.

• Tahitian pearls are among the largest pearls in the world, ranging in size from approximately 8 mm to 18 mm.



IP111-9EWT11/ 9PWT13

9ct wg Tahitian drop 11mm hook diamond earrings 0.04ct and 13mm diamond enhancer 0.05ct



IP406-EWT11

18ct wg Tahitian round 11mm diamond earrings 0.42ct



IP116-EWT12

18ct wg Tahitian drop 12mm diamond earrings 0.20ct



IP30-EWT10-9

9ct wg Tahitian drop 10mm diamond huggy earrings 0.12ct



IP34-EWT10-9CT

9ct wg Tahitian drop 10mm diamond huggy earrings 0.13ct



IP993-EWT10

18ct wg Tahitian drop 10mm huggy earrings



IP174-EWT12

18ct wg Tahitian drop 12mm wide pave diamond earrings 0.15ct



IP144-9EWT11

9ct wg Tahitian drop 11mm shepherd hook earrings



IP102-EWT10

18ct wg Tahitian drop 10mm shepherd hook earrings



IP050-EWT10

18ct wg Tahitian round 10mm diamond stud earrings 0.12ct



IPT8MM-9-EWT8

9ct wg Tahitian round 8mm stud earrings



IPT9MM-9EWT9

9ct wg Tahitian round 9mm stud earrings



IP106-EWT10

18ct wg Tahitian round 10mm shepherd hook earrings



IP767-EWT-11

9ct wg Tahitian round 11-12mm short hook earrings



IP029-EWT9-9

9ct wg Tahitian drop 9mm shepherd hook earrings



IPT10MM-9EWT10

9ct wg Tahitian round 10mm stud earrings



IP901-EYT11

18ct yg Tahitian drop 11mm diamond shepherd hook earrings 0.08ct



IP111-9EYT11

9ct yg Tahitian drop 11mm diamond hook earring 0.04ct



IP138-9PYT13

9ct yg Tahitian drop 13mm enhancer



IP107-PYT13

9ct yg Tahitian drop 13mm enhancer



IP111-9PYT13

9ct yg Tahitian drop 13mm diamond enhancer 0.05ct



IP403-PWT13

18ct wg Tahitian drop 13mm diamond pendant 0.08ct



IP171-PWT13

18ct wg Tahitian round 13mm diamond pendant 0.24ct



IP028-9PWT13

9ct wg Tahitian drop 13mm diamond enhancer 0.035ct



IP333-9PYT9

9ct yg Tahitian drop 9mm enhancer



IP061-PYT12

18ct yg Tahitian drop 12mm pendant



IP063-PYT13

18ct yg Tahitian drop 13mm pendant



IP404-PWT13

18ct wg Tahitian drop 13mm diamond enhancer 0.18ct



IP222-PWT14

18ct wg Tahitian drop 14mm enhancer



IP777-9RWT10

9ct wg Tahitian round 10mm diamond ring 0.20ct



IP701-PWT12

18ct wg Tahitian drop 12mm diamond enhancer 0.08ct



IP259-PWT10-9

9ct wg Tahitian drop 10mm pendant



IP1006-PWT9

18ct wg Tahitian round 9mm diamond pendant 0.04ct



IP1005-9RWT9

9ct wg Tahitian round 9mm diamond ring 0.04ct



IP4439-RWT10

18ct wg Tahitian round 10mm diamond ring 0.12ct



IP778-RWT10-9

9ct wg Tahitian round 10mm diamond ring 0.312ct



9CT SOUTH SEA AND TAHITIAN SHEPHERD HOOK STAND

IP029-EYS9-9
9ct yg Broome South Sea drop 9mm shepherd hooks

IP029-EYS10-9
9ct yg Broome South Sea drop 10mm shepherd hooks

IP029-EYS11-9
9ct yg Broome South Sea drop 11mm shepherd hooks

IP029-EWT9-9
9ct wg Tahitian drop 9mm shepherd hooks

IP029-EWT10-9
9ct wg Tahitian drop 10mm shepherd hooks

IP029-EWT11-9
9ct wg Tahitian drop 11mm shepherd hooks

9CT SOUTH SEA AND TAHITIAN PENDANT STAND

IP1006-PYS9-9
9ct yg Broome South Sea drop 9mm diamond pendant 0.04ct

IP259-PYS10-9
9ct yg Broome South Sea drop 10mm pendant

IP269-PYS11-9
9ct yg Broome South Sea drop 11mm enhancer

IP259-PWT9-9
9ct wg Tahitian drop 9mm pendant

IP259-PWT10-9
9ct wg Tahitian drop 10mm pendant

IP259-PWT11-9
9ct wg Tahitian drop 11mm pendant



*Chain for display purposes only



IP586-B9Y

9ct yg Tahitian round
9-10mm bracelet 19cm



TR0810-9W

9ct wg Tahitian round
8-10mm strand



TR1112-9Y

9ct yg Tahitian round
11-12mm strand

AKOYA

Akoya Pearls are considered the classic cultured pearl. Akoya oysters rarely produce more than 2 pearls per harvest.



- The Akoya pearl is the worlds best-known pearl, they are a saltwater cultured pearl from the akoya oyster (Pinctada fucata martensii) found in Japan

- The vast majority of the world's akoya pearls are produced in Japan

- Akoya pearls are often very round and spherical in shape and are complemented by very high luster.

- Akoya oyster is the smallest commercially farmed pearl-producing oyster. An average akoya pearl is only 7 mm. Akoya pearls are currently being harvested in sizes from as small as 2 mm up to the very rare 10mm.

- While the akoya pearl is considered to be more rare and valuable than the freshwater pearl, it is the third most valuable commercially produced pearl

A
B
C
D
E
F



18CT JAPANESE AKOYA WHITE ROUND STUD STAND

STAND #6

A	NS09-18	5-5.5mm
B	NS10-18	6-6.5mm
C	NS11-18	7-7.5mm
D	NS12-18	7.5-8mm
E	NS13-18	8-8.5mm
F	NS14-18	8.5-9mm



JAPANESE AKOYA STRANDS

(white, round, unstrung)

NS09	5-5.5mm
NS10	6-6.5mm
NS11	7-7.5mm
NS12	7.5-8mm
NS13	8-8.5mm
NS14	8.5-9mm
NSGRAD	4.5-8mm

All strands can be finished with a clasp of your choice and strung knotted at any length upon request.



NS11N-9YG

9ct yg Japanese Akoya round 7-7.5mm strand 45cm



NS09N-YPS

9ct yg Japanese Akoya round 5-5.5mm vintage style strand 45cm



IP19WYG-A/IP22WYG-A

9ct yg white round 7.5-8mm Japanese Akoya shepherd hook earrings and pendant

MABE

Mabe pearls are half round or dome shaped pearls grown on the inside of the oyster.



- Mabe pearls, also known as blister pearls, are half-pearls that are cultivated on the inside of a mollusk's shell.

- A small nucleus, usually made out of mother of pearl, is attached to the shell of the mollusk and left to accumulate nacre over a period that usually runs about two or three years.

- Once the pearls are ready for harvest, they are cut out of the shell and their nucleus is removed, leaving a hollow pearl. The pearl is then filled with a colorless resin to reinforce the pearl's structure and sealed with a mother-of-pearl backing to close everything up.

- Mabe pearls can be grown in any saltwater or freshwater pearl-bearing musell, but the most popular varieties are Pinctada maxima that is grown in Australia

- Average sizes are 12.0 -14.0 mm across, and anywhere from 14.0-18.0 mm in length. They come in a range of organic, free-form shapes as well as the classic tear-drop and rounded disc shapes.

- "Half-pearls" are much more affordable than a whole, loose pearl would be.



IP1107E-RQR/IP1107-RQR

9ct rg Australian Mabe round 10mm & 6mm rose quartz hook earrings and 15mm rose quartz pendant



IP1056E-9R/P-9R/R-9R

9ct rg Australian Mabe oval 8x10mm hook earrings & ring and 10x14mm pendant



IP665-P

9ct yg Australian Mabe 13mm enhancer (available in s/s - IP665-PSS)



IP11079P-9R

9ct rg Australian Mabe oval 10x14mm pendant



IP1107-BTY

9ct yg Australian Mabe 15mm blue topaz pendant



IP1107-GY

9ct yg Australian Mabe 15mm garnet pendant



IP1056E-9Y

9ct yg Australian Mabe oval 8 x 10mm shepherd hook earrings



IP661-E/R

9ct yg Australian Mabe 10mm stud earrings and ring (available in s/s - IP661-ESS, IP661-RSS)



IP664-E/IP664-R

9ct yg Australian Mabe 13mm shepherd hook earrings and ring (ring available in s/s - IP664-RSS)



IP10315-9R

9ct rg Australian Mabe oval 8 x 10 diamond ring 0.12ct



IP1154-RRQS

9ct rg Australian Mabe 10mm ring with square rose quartz diamond ring 0.07ct (available in s/s - IP1154-SRQS)



IP1154-RRQR

9ct rg 10mm Mabe ring with round rose quartz diamond ring 0.06ct (available in s/s - IP1154-SRQR)



IP2688-9YG/ IP2688-9PYG

9ct yg Australian Mabe 10mm diamond ring 0.03ct and 13mm diamond enhancer 0.03ct (available in s/s - IP2688-SS, IP2688-PSS)



IP10MCLIP-9Y

9ct yg Australian Mabe 10mm clip-on earrings with pin (available in s/s - IP10MCLIP-SS)



IP13MCLIP-9Y

9ct yg Australian Mabe 13mm clip-on earrings with pin (available in s/s - IP13MCLIP-SS)



IP1017-9Y

9ct yg Australian Mabe oval 8x10mm diamond ring 0.04ct



IP3679-9YG

9ct yg Australian Mabe 10mm diamond ring 0.02ct (available in s/s - IP3679-SS)



IP3579-9YG

9ct yg Australian Mabe 13mm diamond ring 0.02ct (available in s/s - IP3579-SS)



IP11192-ESS/PSS/SS

S/S & RGP Australian Mabe 8x10mm shepherd hook earrings, pendant and ring



IPMPEAR-SS/IP103-SS

S/S Australian Mabe tear drop shaped earrings and enhancer

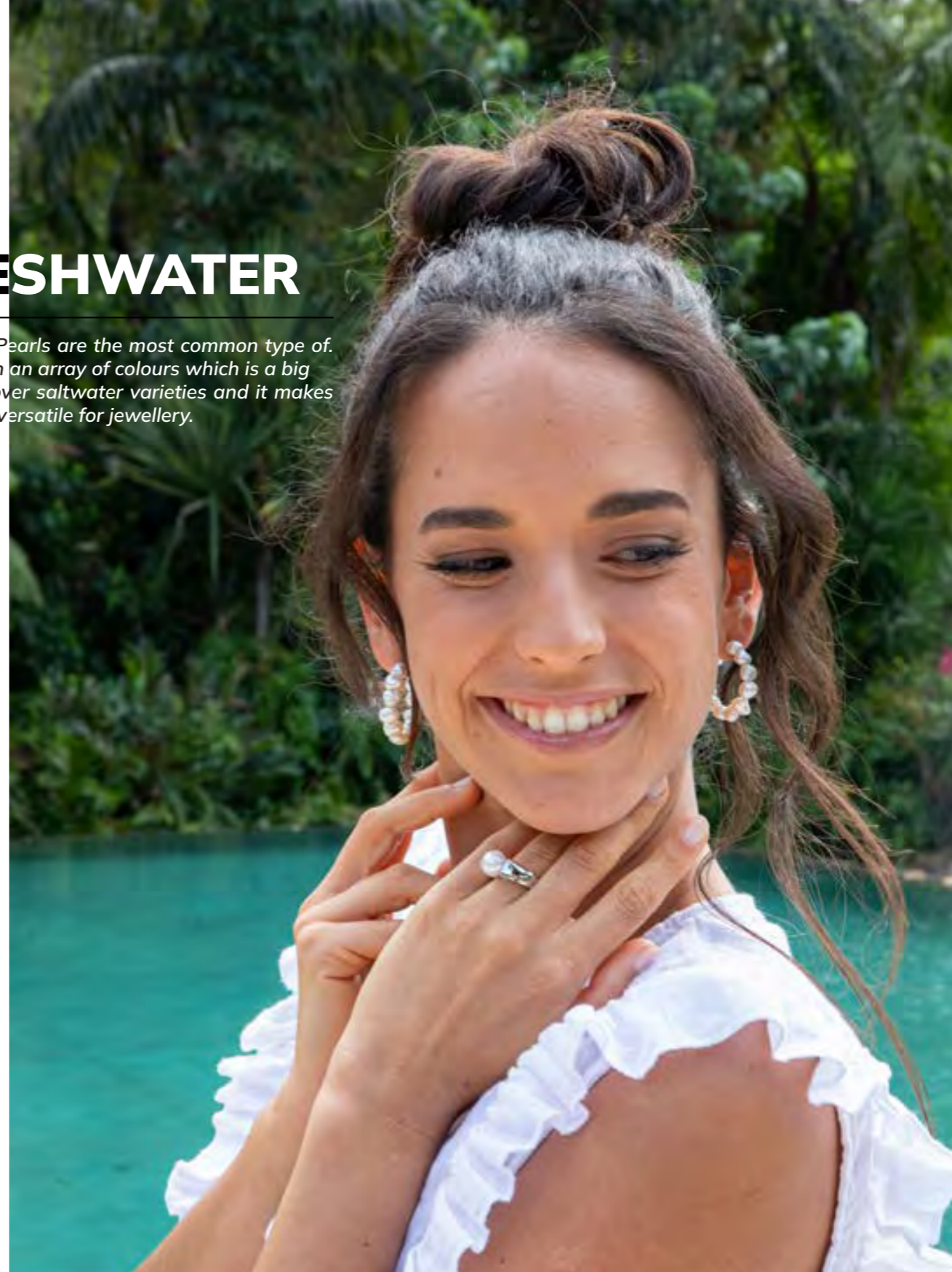


IP664-RSS/IP665-PSS

S/S Australian Mabe 13mm ring and enhancer

FRESHWATER

Freshwater Pearls are the most common type of. They come in an array of colours which is a big advantage over saltwater varieties and it makes highly versatile for jewellery.



IP1107-RQ-SS

S/S Australian Mabe 15mm round rose quartz pendant



IP1107-BTSS

S/S Australian Mabe 15mm round blue topaz pendant



IP1107-GY-SS

S/S Australian Mabe 15mm round garnet pendant



IP9433-9YG

9ct yg Australian Mabe 13mm diamond ring 0.035ct



IP11620-SS

S/S & RGP Australian Mabe 10mm ring



IP2689-SS

S/S Australian Mabe 13mm cz ring

• Freshwater pearls are the most commonly produced pearls. As the name suggests they are grown in freshwater, usually in mussels that live in lakes and rivers.

• Freshwater pearls are cultured by tissue nucleation, a single freshwater pearl mussel is capable of producing 24-32 pearls.

• Freshwater pearls have the widest range of natural colors, ranging from white to pink to lavender as well as dyed options like black, grey, gold.

• Due to their mass production, Freshwater pearls are also popular for their affordable price points.

• Freshwater pearl sizes typically range from 5mm to 10mm, though they are often available in larger sizes up to 13mm.



IP901-YGMM/IP1006-F-P

9ct yg FWP white drop 9-9.5mm diamond shepherd hook earrings 0.08ct and pendant 0.04ct



IP385-E9Y/P9Y

9ct yg FWP white button 7-7.5mm hook earrings and pendant



IP108-YG/IP32-YG

9ct yg FWP white drop 10mm shepherd hook earrings and enhancer



IP38-EYG/PYG

9ct yg FWP white button 12-12.5mm euro earring and enhancer



IP704-E/P

9ct yg FWP white drop 9mm diamond earrings 0.05ct and chain pendant 0.03ct



IP007E-9RG/P-9RG

9ct yg FWP drop white 9-9.5mm hook earrings 0.063ct and pendant 0.03ct



MF800-E/P

9ct yg FWP white drop 7.5-8mm shepherd hook earrings and pendant



IP011E-9YG/IP0026P-9YG

9ct yg FWP white round 6-6.5mm shepherd hook earrings and pendant



IP24-YG/IP31-YG

9ct yg FWP white drop 9mm diamond huggy earrings 0.13ct and enhancer 0.08ct



IP001LE-9YG-COIN/IP138-P9Y-COIN

9ct yg FWP white coin 12-13mm long hook earrings and enhancer



IP001LE-9YG-BAR/IP138-P9Y-BAR

9ct yg FWP white baroque 12-13mm long hook earrings and enhancer



IP19WYG-R/IP23WYG-R

9ct yg FWP white round 7.5-8mm shepherd hook earrings and 8.5-9mm pendant



IPWJ11-RYG/PYG/YG

9ct yg FWP white round 9-9.5mm diamond ring 0.12ct, pendant 0.06ct and earrings 0.12ct



IP014E-9YG/015P-9YG

9ct yg FWP white drop 9-9.5mm long flared stud earrings and 10-10.5mm pendant



IP101-R/IP100-E

9ct yg FWP white button 8-8.5mm ring and earrings



IP117-9YG/IP011P-9YG

9ct yg FWP drop 9mm diamond interchangeable huggy earrings 0.12ct and 10-10.5mm pendant 0.013ct



IP901-YG-K12/ IP1006-FP-K12

9ct yg FWP white keshi 12-13mm diamond shepherd hook earrings 0.08ct and pendant 0.04ct



IP38-ERG-P/PRG-P

9ct rg FWP pink button 12-13mm euro earrings and 12-13mm enhancer



IP990-YG

9ct yg FWP white drop 9-9.5mm huggy earrings



IP36-ERG

9ct rg FWP white drop 9-9.5mm huggy earrings



IP37-EYG

9ct yg FWP white drop 10-10.5mm large huggy earring



R001-9YGW

9ct yg FWP white round 7mm diamond ring 0.01ct



R009-9YGW

9ct yg FWP white round 8mm ring



R008-9YGW

9ct yg FWP white round 8-8.5mm ring



IP7CLIP-W-9KY

9ct yg FWP white button 7mm clip-on earrings *non-pierced (available in 9mm)



IP005E-9YG/IP1228-9YG

9ct yg FWP white drop 9-9.5mm shepherd hook earrings and 8-8.5mm cage pendant



IP003E-9YG

9ct yg FWP white round 4mm & 8mm shepherd hook earrings



IPRS3-9Y

9ct yg FWP white button 8-8.5mm ring



IP8116-RYG

9ct yg FWP white round 9-9.5mm diamond ring 0.13ct



IPRS11-9YG

9ct yg FWP white button 10-10.5mm diamond ring 0.09ct



IP001LE-9YG

9ct yg FWP white drop 9-9.5mm long hook earrings



IP398-E9Y

9ct yg FWP white round 7-7.5mm earring hooks



IP399-E9Y

9ct yg FWP white round 8.5-9mm hook earrings



IPRS2-9Y

9ct yg FWP white button 10-10.5mm ring



IPRS12-9Y

9ct yg FWP white button 10.5-11mm ring



R001-12MM

9ct yg FWP white button 12mm diamond ring 0.02ct



R008-12MM

9ct yg FWP white button 12mm ring



IP38-RYG

9ct yg FWP white button 12-12.5mm ring



IPRS38-9YG

9ct yg FWP keshi 12-18mm handmade ring



R001-9WGW

9ct wg FWP white round 7mm
diamond ring 0.01ct



IP8172-RWG

9ct wg FWP white round 9-9.5mm
diamond ring 0.11ct



IPRS38-9RG

9ct rg FWP keshi 12- 18mm
handmade ring



IPRS8-9R

9ct rg FWP white button
10-10.5mm ring



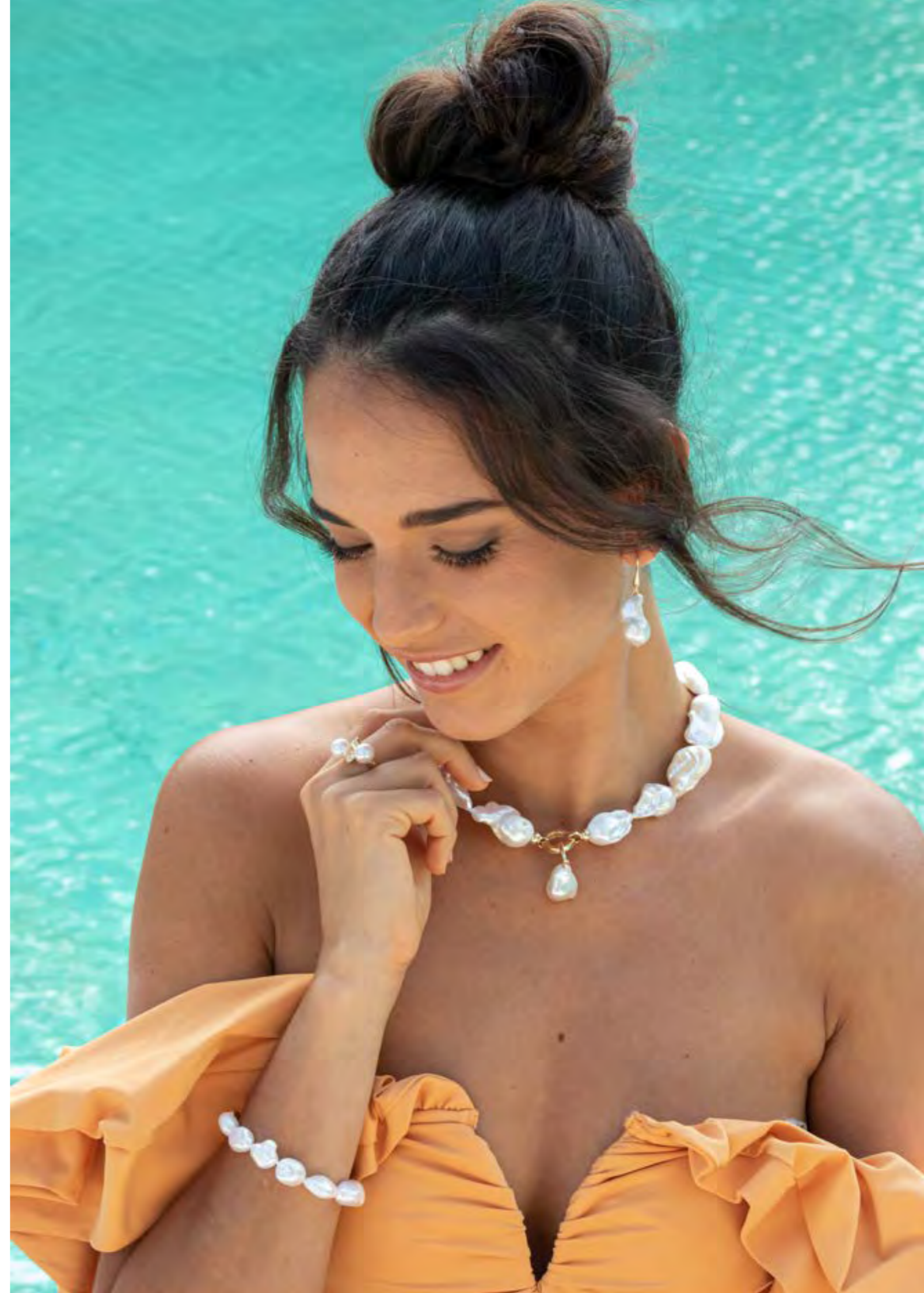
IP8172-RRG

9ct rg FWP white round 9-9.5mm
diamond ring 0.11ct



IPRS21-9RG

9ct rg FWP pink button
12-13mm ring





IP80WYG/WP

9ct yg FWP white nucleated baroque 12-14mm shepherd hook earrings and enhancer



IP19WYG-BAR/IP22WYG-BAR

9ct yg FWP baroque 13mm shepherd hook earrings and pendant



IP107-9YK

9ct yg FWP white keshi 12-13mm shepherd hook earrings



IKE03-9YG

9ct yg FWP white keshi 12mm stud earrings



TP03-WE

9ct yg FWP white keshi 13-14mm shepherd hook earrings



IP125-E9Y

9ct yg FWP white round and oval 4mm studs string earrings



IP3556N-9YG-DIA

9ct yg FWP keshi 18mm+ diamond pendant 0.03ct



IP3556N-9YG

9ct yg FWP white keshi 18mm+ pendant



IP82-G014-9Y

9ct yg FWP white baroque nucleated 13mm+ necklace with spring clasp 45cm



TP05-W9Y

9ct yg FWP white keshi 10-11mm strand 45cm (available in pink - TP05-P9Y)



TP03

9ct yg FWP white keshi 11.5-13mm strand 45cm



TP03-B

9ct yg FWP white keshi 11.5-13mm bracelet 19cm



IP82-G014-9YB

9ct yg FWP white baroque nucleated 13mm+ bracelet with spring clasp 20cm



IP107-9YK

9ct yg FWP white keshi 12-13mm shepherd hook earrings



MF790-WE/WP

S/S FWP white drop 7.5-8mm shepherd hook earrings and pendant with box chain



IKE04-ESS/NSS

S/S FWP white keshi 9-10mm cz stud earrings and 10-11mm pendant chain 42cm + 5cm



IP4115-E/P

S/S FWP white keshi 13-17mm cz shepherd hook earrings and pendant



IP3885E/P/R

S/S & RGP FWP white button 4-5mm cz hook earrings, pendant and 6-7mm ring



IP140ERGP-P/PRGP-P

S/S & RGP FWP white button 8-9mm pink enamel earrings and 9-10mm pendant



IP140ESS-B/PSS-B

S/S & RGP FWP white button 8-9mm blue enamel earrings and 9-10mm pendant



IP5005E/IP5001R

S/S FWP white coin 13-14mm shepherd hook earrings and 13-15mm ring



IP90ESS/NSS

S/S FWP white keshi 14-16mm shepherd hook earrings and pendant with chain 40cm + 5cm ext.



IP137ESS-D/PSS-D

S/S FWP white drop baroque fully drilled 12mm shepherd hook earrings and pendant



IP-HALO-IEWSS

S/S FWP white button 7mm studs with halo claw open edge

Add on purchase: interchangeable button 7-9mm (different colours available)



IP001LE-SS

S/S FWP white drop 9-9.5mm long hook earrings



IP16-E

S/S FWP white drop 9-9.5mm cz shepherd hook earrings



IP0512-WE/WP

S/S FWP white drop 8.5-9mm with cz hook clip earrings and pendant with chain



IP19WSS-R/IP22WSS-R

S/S FWP white round 7.5-8mm shepherd hook earrings and 8-8.5mm pendant



IP98E-RGP/PRG

S/S & RGP FWP white button 6-6.5mm cz huggy earrings and 8mm pendant



IP56E

S/S FWP white drop 8-9mm cz earrings



IP32-E

S/S FWP white baroque 11-12mm short shepherd hook earrings



IP89-ECZ

S/S FWP white button 8-8.5mm cz stud earrings



IP448E-CZ

S/S FWP white drop 8.5-9mm
cz huggy earrings
(interchangeable)



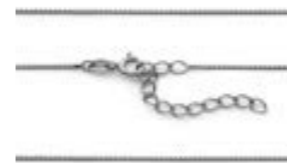
IPCLIPSS-W

S/S FWP white button 7-7.5mm
clip-on earrings (non-pierced)
(available in 9-9.5mm - IP9CLIPSS-W)



IPCLIPSS-B

S/S FWP dyed black button 7-7.5mm
clip-on earrings (non-pierced)
(available in 9-9.5mm - IP9CLIPSS-B)



IPCHAIN

S/S rhodium plated box chain
45cm + 5cm ext.



IPCHAIN-60CM

S/S rhodium plating cable chain
60cm + 8cm ext.



IPRS12

S/S FWP white button 10.5-11mm ring



IP307-CLIPW

S/S FWP white drop 7.5-8mm
clip-on dangling earrings
(non-pierced)



IP307-CLIP-P

S/S FWP pink drop 7.5-8mm
clip-on dangling earrings
(non-pierced)



IP307-CLIP-B

S/S FWP dyed black drop 7.5-8mm
clip-on dangling earrings
(non-pierced)



IPRS2

S/S FWP white button 10-10.5mm ring



IPRS8

S/S FWP white button 10-10.5mm 3 band ring



IPRS21

S/S FWP white button 11.5-12mm ring



IP139PSF13

S/S FWP white drop 12-13mm
cz enhancer



IP138-PSF10

S/S FWP white drop 10mm
enhancer



IP994-NS

S/S FWP white near round 9.5-10mm
43cm + 3cm ext. chain



IPRS24

S/S FWP white button 8.5-9mm ring



IPRS38

S/S FWP keshi 12-18mm handmade ring



IPRS41-RGP

S/S & RGP FWP keshi 10-12mm ring



IKE03-S12

S/S FWP white keshi
12-13mm stud earrings



IP141E-RGP

S/S & RGP keshi 9-10mm
shepherd hook earrings



IP6744E

S/S FWP white keshi 6-7mm
3cm hoop studs



IP150EU-KESHI

S/S FWP keshi white 10-11mm
U-shaped stud earrings



IP1212-E

S/S FWP biwa 12mm
shepherd hook earrings



TP01-WE

S/S FWP white keshi 11-12mm
shepherd hook earrings
(available in dyed grey - TP01-GE)



IP3556N

S/S FWP keshi 18mm+ cz pendant



IPCHAIN-RGP

S/S 14ct rg plated cable chain
45cm + 3cm ext.
(available in S/S 14ct yg plated - IPCHAIN-YGP)



IP248-BLK

FWP white 10-11mm black leather bracelet
with stainless steel 18cm





IP4060N-RGP

S/S & RGP FWP pink drop 9-10mm cz lariat necklace 41cm + 5cm ext.



TP04-WB/TP04-W

S/S FWP white keshi 10.5-11.5mm bracelet 19cm with toggle clasp and strand 45cm



MF89-W/W-B

S/S FWP white circle 8-9mm strand 45cm and bracelet 19cm (strand also available in 50cm - MF89-W-50CM)



IP82-SS

S/S FWP white baroque nucleated 13mm+ 46cm strand



IP80-PSS-45

S/S FWP natural pink baroque 12-13mm nucleated strand 45cm



IP80-G-SS

S/S FWP dyed grey baroque nucleated 12mm+ strand 46cm



MF94-W

S/S FWP white near round 8.5-9.5mm strand 45cm



TP06-WSS

S/S FWP white keshi 10.5-11.5mm strand 45cm with magnetic clasp (available in dyed grey - TP06-SS)



TP03-SSBM-20CM/TP03-SSM

S/S FWP white keshi 11.5-13mm bracelet 20cm and strand 45cm with magnetic clasp



IP80-B-SS

S/S FWP dyed black baroque nucleated 13-17mm strand 46cm



IKE02

S/S FWP white biwa 17mm+ strand 45cm with bolt clasp (available in 50cm - IKE02-50CM)



IKE02-B

S/S FWP white biwa 17mm+ bracelet 20cm (available in 21cm - IKE02-B-21CM)



SP196-SS-45CM

S/S FWP white keshi 9.5-10.5mm strand 45cm (available in 50 and 60cm)



SP195-SS-45CM

S/S FWP multi white, grey, pink baroque 9.5-10.5mm strand 45cm (available in 50 and 60cm)



SP199-SS-45

S/S FWP white, black, grey keshi 8.5-9mm strand 45cm (available in 50 and 60cm)



IC-M8-9RG

9ct rg FWP round multi 7.5-8.5mm strand 45cm



IP323-W-120

FWP white baroque 6-7mm strand 120cm with no clasp



IP411-B19/IP411

S/S FWP white keshi 3 row wire bracelet 19cm and necklace with bolt ring clasp 43cm



SP198-G

FWP dyed grey keshi 8.5-9mm strand 120cm no clasp



SP198-SS

S/S FWP white keshi 8.5-9mm strand 120cm with 9mm ball clasp (available without clasp - SP198)



SP195-SS

S/S FWP white, dyed grey, pink keshi 9.5-10.5mm strand 120cm with 9mm ball clasp (available without clasp - SP195)



SP196-B

FWP white keshi 9.5-10.5mm elastic bracelet



SP195-B

FWP white, dyed grey, pink keshi 9.5-10.5mm elastic bracelet (available in 7.5-8.5mm - IP313-BM)



SP194-B

FWP dyed grey keshi 9.5-10.5mm elastic bracelet



SP199-SS

S/S FWP multi color keshi 8.5-9mm strand 120cm with 9mm clasp (White, Dyed black, Dyed grey)



SP203N-90

FWP multi color circle 7-8mm strand 90cm no clasp (White, Champagne, Dyed Grey)



SP202N-90

FWP multi color circle 7-8mm strand 90cm no clasp (White, Champagne, Dyed Grey, Dyed Black)



IP313-BW

FWP white baroque 7.5-8.5mm elastic bracelet (available in 6.5-7.5mm - IP323-BW)



IP313-BP

FWP pink baroque 7.5-8.5mm elastic bracelet (available in 6.5-7.5mm - IP323-BP)



IP313-BG

FWP dyed grey baroque 7.5-8.5mm elastic bracelet



IP310-BB

FWP dyed black off round 9.5-10.5mm elastic bracelet 19cm



SP203-B19

FWP multi color circle 7-8mm elastic bracelet 19cm (White, Champagne, Dyed Grey)



SP202-B19

FWP multi color circle 7-8mm elastic bracelet 19cm (White, Champagne, Dyed Grey, Dyed Black)



IP310-B

FWP white off round 9.5-10.5mm elastic bracelet 19cm



IP310-BP

FWP pink off round 9.5-10.5mm elastic bracelet 19cm



IP310-BG

FWP dyed grey off round 9.5-10.5mm elastic bracelet 19cm



IC-GRAD

9ct yg FWP white round 4.5-7.5mm graduated single strand 45cm



IC-GRAD2

9ct yg FWP white round 4.5-7.5mm graduated double strand 45cm



SP270-MAG

9ct yg FWP white round 10.5-11.5mm strand 45cm with magnetic clasp



LTH6

S/S FWP pink oval 6-6.5mm strand 45cm (available in 50cm - LTH6-50CM)



WTH6

S/S FWP white oval 6-6.5mm strand 45cm (available in 50cm - WTH6-50CM)



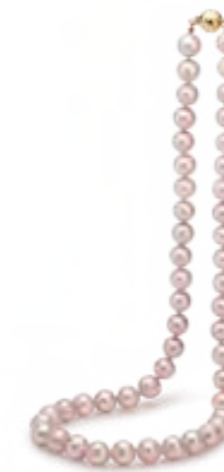
SP293-9Y

9ct yg FWP white near round 11-13mm strand 45cm



White

- IC-W5-14** | 5-5.5mm
- IC-W6-14** | 6-6.5mm
- IC-W7-14** | 7-7.5mm
- IC-W8-14** | 8-8.5mm



Pink

- IC-L5-14** | 5-5.5mm
- IC-L6-14** | 6-6.5mm
- IC-L7-14** | 7-7.5mm
- IC-L8-14** | 8-8.5mm



Black

- IC-B5-14** | 5-5.5mm
- IC-B6-14** | 6-6.5mm
- IC-B7-14** | 7-7.5mm
- IC-B8-14** | 8-8.5mm



SP106-W-B/SPI06

9ct yg FWP white oval 9-10mm bracelet 19cm and strand 45cm



MF90-W/WB

S/S FWP white round 9.5-10.5mm strand 45cm and bracelet 19cm



IC-W4-2BYPS

9ct yg FWP white round 4-4.5mm double row bracelet 19cm



White

- IC-W5-B** | 5-5.5mm
- IC-W6-B** | 6-6.5mm
- IC-W7-B** | 7-7.5mm
- IC-W8-B** | 8-8.5mm



Pink

- IC-L5-B** | 5-5.5mm
- IC-L6-B** | 6-6.5mm
- IC-L7-B** | 7-7.5mm
- IC-L8-B** | 8-8.5mm



Black

- IC-B5-B** | 5-5.5mm
- IC-B6-B** | 6-6.5mm
- IC-B7-B** | 7-7.5mm
- IC-B8-B** | 8-8.5mm

9ct yg Freshwater Classic Round Strands 45cm

9ct yg Freshwater Classic Braceletes 19cm

**Different lengths can be ordered on request

*Available in s/s, wg and rg clasp on requests

Freshwater Stud Stands

Button



**S/S Stand 1
9ct Stand 2**

**S/S Stand 23
9ct Stand 24**

**S/S Stand 29
9ct Stand 30**

**S/S Stand 26
9ct Stand 27**

**S/S Stand 41
9ct Stand 42**



7-7.5mm



8-8.5mm



9-9.5mm



10-10.5mm



11-11.5mm



12-12.5mm

Round



**S/S Stand 3
9ct Stand 4**

**S/S Stand 31
9ct Stand 32**

**S/S Stand 33
9ct Stand 34**

**S/S Stand 35
9ct Stand 36**

**S/S Stand 43
9ct Stand 44**



5-5.5mm



6-6.5mm



7-7.5mm



8-8.5mm



8.5-9mm



9.5-10mm

9ct Gold Freshwater Pearl Drop Hooks & Pendants



STAND 8

9ct Shepherd Hook Stand

(L-R) IP19WYG, IP19PYG, IP19BYG/GYG, IP74WYG/WWG, IP74PYG, IP74GYG/BYG



White

IP19WYG | 7.5-8mm
IP74WYG | 9-9.5mm
IP75WYG | 10-10.5mm



Pink

IP19PYG | 7.5-8mm
IP74PYG | 9-9.5mm
IP75PYG | 10-10.5mm



Dyed Grey

IP19GYG | 7.5-8mm
IP74GYG | 9-9.5mm
IP75GYG | 10-10.5mm



Dyed Black

IP19BYG | 7.5-8mm
IP74BYG | 9-9.5mm
IP75BYG | 10-10.5mm



STAND 13

9ct Pendant Stand

(L-R) IP23WYG, IP23PYG, IP23GWG/BWG, IP24WYG, IP24PYG, IP24BYG



White

IP22WYG | 7.5-8mm
IP23WYG | 9-9.5mm
IP24WYG | 10-10.5mm



Pink

IP22PYG | 7.5-8mm
IP23PYG | 9-9.5mm
IP24PYG | 10-10.5mm



Dyed Grey

IP22GYG | 7.5-8mm
IP23GYG | 9-9.5mm
IP24GYG | 10-10.5mm



Dyed Black

IP22BYG | 7.5-8mm
IP23BYG | 9-9.5mm
IP24BYG | 10-10.5mm

Sterling Silver Freshwater Pearl Drop Hooks & Pendants



STAND 7
Sterling Silver Shepherd Hook Stand
(L-R) IP19WSS, IP19PSS, IP19GSS, IP74WSS, IP74PSS, IP74BSS



White
IP19WSS | 7.5-8mm
IP74WSS | 9-9.5mm
IP75WSS | 10-10.5mm



Pink
IP19PSS | 7.5-8mm
IP74PSS | 9-9.5mm
IP75PSS | 10-10.5mm



Dyed Grey
IP19GSS | 7.5-8mm
IP74GSS | 9-9.5mm
IP75GSS | 10-10.5mm



Dyed Black
IP19BSS | 7.5-8mm
IP74BSS | 9-9.5mm
IP75BSS | 10-10.5mm



STAND 10
Sterling Silver Pendant Stand
(L-R) IP22WSS, IP22PSS, IP22BSS, IP23WSS, IP23PSS, IP23BSS



White
IP22WSS | 7.5-8mm
IP23WSS | 9-9.5mm
IP24WSS | 10-10.5mm



Pink
IP22PSS | 7.5-8mm
IP23PSS | 9-9.5mm
IP24PSS | 10-10.5mm



Dyed Grey
IP22GSS | 7.5-8mm
IP23GSS | 9-9.5mm
IP24GSS | 10-10.5mm



Dyed Black
IP22BSS | 7.5-8mm
IP23BSS | 9-9.5mm
IP24BSS | 10-10.5mm

FRESHWATER EDISON

Freshwater Edison Pearls are cultivated similar to Akoya & South Sea by inserting one bead into the mussel tissue of the oyster.



- Edison pearls are freshwater cultivated pearls, they are bead nucleated grown in the freshwater mussels primarily in China

- The average size of an Edison pearl ranges between 11.0-15.0mm

- Edison pearls are known for their intense, metallic naturally colored hues such as pink, white, purple, gold, bronze, and more.

- Edison pearls are positioning themselves as a very affordable alternative to more expensive South Sea pearls.

- Edison pearls are cultivated by inserting one bead into the mussel that then becomes the pearl, it requires two to three years to form



IP779-EYG-EDI/IP780PYG-EDI

9ct yg FWP Edison white round 12mm diamond huggy earrings 0.32ct and diamond enhancer 0.23ct



IP779-ERG-EDI-P/ IP780PRG-EDI-P

9ct rg FWP Edison pink round 12mm diamond huggy earrings 0.32ct and 12mm enhancer 0.23ct



IP406-EYG-EDI

9ct yg FWP Edison white round 12mm diamond hook earrings 0.42ct



IP111RG-EDI/PRG-EDI

9ct rg FWP Edison pink drop 13mm diamond shepherd hook earrings 0.04ct and enhancer 0.05ct



IP111YG-EDI-W/PYG-EDI-W

9ct yg FWP Edison white drop 13mm diamond shepherd hook earrings 0.04ct and enhancer 0.05ct



IP767-EYG/PYG

9ct yg FWP Edison white round 12mm short plain hook earrings and 11.5-12mm pendant



IP406-ERG-EDI-P

9ct rg FWP Edison pink round 12mm diamond hook earrings 0.42ct



IP117-9RG-EDI-P

9ct rg FWP Edison pink round 9-9.5mm diamond huggy interchangeable earrings dia.0.12ct



IP117-9YG-EDI

9ct yg FWP Edison white round 9-9.5mm diamond huggy interchangeable earrings 0.12ct



IP107-YG-WHT/PYG-WHT

9ct yg FWP Edison white drop 13mm shepherd hook earrings and enhancer



IP107-YG/PYG

9ct yg FWP Edison pink drop 13mm shepherd hook earrings and enhancer



IP901-YG-EDI10/ IP1006-FP-EDI-9Y

9ct yg FWP Edison white round 10-11mm diamond shepherd hook earrings 0.08ct and diamond pendant 0.04ct



IP907-PYG-EDI

9ct yg FWP Edison white round 12mm diamond pendant 0.164ct



IP907-PRG-EDI-P

9ct rg FWP Edison pink round 12mm diamond pendant 0.164ct



IP780PWG-EDI

9ct wg FWP Edison white round 12mm diamond enhancer 0.23ct



IP901-RG-EDI-10/ IP1006-FP-EDI

9ct rg FWP Edison pink round 10-11mm diamond shepherd hook earrings 0.08ct and diamond pendant 0.04ct



IP990-RG-EDIP

9ct rg FWP Edison pink round 9-10mm huggy earrings



IP990-YG-EDI

9ct yg FWP Edison white round 9-10mm huggy earrings



IP0292WP-14

9ct rg FWP Edison white round 13.5-14mm wedge pendant



IP0292PP-14

9ct rg FWP Edison pink round 13.5-14mm wedge pendant



IP1080-EDI-9YG

9ct yg FWP Edison white round 13-14mm chain necklace 45cm (available in sterling silver - IP1080-EDI-SS)



IPCD39-9Y

9ct yg curb chain 45cm



IP500-9YGD-1

9ct yg FWP Edison white round 12mm diamond basket adjustable necklace 50, 60, 70cm 0.066ct



IP500-14RGD

14ct rg FWP Edison white round 12mm diamond basket adjustable necklace 50, 60, 70cm 0.066ct



IP39-PRG

9ct rg FWP Edison pink round 13-14mm diamond pendant 0.04ct



IP121-PYG-W12

9ct yg FWP Edison white round 12mm interchangeable diamond enhancer 0.06ct



IP121-PRG-P12

9ct rg FWP Edison pink round 12mm interchangeable diamond enhancer 0.06ct



IP82-W9Y

9ct yg FWP Edison white near round nucleated 11-15mm strand 45cm (available in 9ct rose gold - IP82-W9R available in s/s clasp - IP82-WRSS)



IP82-P9Y

9ct yg FWP Edison natural pink near round nucleated 11-14mm strand 45cm (available in 9ct rose gold - IP82-P9R available in s/s clasp - IP82-PRSS)



IP82-P9YB

9ct yg FWP Edison natural pink near round nucleated 11-14mm bracelet 20cm (available in 9ct rose gold - IP82-P9R-B available in s/s clasp - IP82-PRSSB)



IP122-PYG-W12

9ct yg FWP Edison white round 12mm interchangeable enhancer



IP122-PRG-P12

9ct rg FWP Edison pink round 12mm FWP interchangeable enhancer



IP138-P9Y-EDI-W

9ct ryg FWP Edison white drop 13mm enhancer



IP88MSS

S/S FWP Edison natural multi round 11-14mm necklace 45cm



IP82-BANGLE-9Y

9ct yg FWP Edison white drop 13mm bangle



IP82-BANGLE-9RP

9ct rg FWP Edison natural pink drop 13mm bangle (available with white pearl - IP82-BANGLE-9R)



IP620-R9Y-EDI-W

9ct yg FWP Edison white round
11-12mm ring



IP620-R9R-EDI-P

9ct rg FWP Edison pink round
11-12mm ring



R001-9RG-EDI

9ct rg FWP Edison pink round
8mm diamond ring 0.01ct



IP1143-R9Y-EDI-W

9ct yg FWP Edison white round 9mm
diamond ring 0.04ct



IP1143-R9R-EDI-P

9ct rg FWP Edison white & pink round
9mm diamond ring 0.04ct



IP778-RRG-EDI

9ct rg FWP Edison pink round
10mm diamond ring 0.30ct



IP39-RRG

9ct rg FWP Edison pink round
12-13mm diamond ring 0.05ct
(available with white Edison pearl -
IP39-RRG-W)



IP134-RYG-EDI

9ct yg FWP Edison white round
9mm ring



IP134-RRG-EDI-P

9ct rg FWP Edison pink round
9mm ring



IP6718E

S/S FWP Edison multi pink round
10-12mm hook earrings



IP6718B-19CM

S/S FWP Edison multi pink round
10-12mm bracelet 19cm + 3cm ext.



IP6718N-45CM

S/S FWP Edison multi pink round
10-12mm necklace 45cm

IP6718N-100CM

S/S FWP Edison multi pink round
10-12mm necklace 100cm + 5cm ext.



IP450E-RGP/P-RGP

S/S 18ct RGP FWP Edison pink round 11mm stud earrings and 12mm pendant



IP450E-RGP-W/P-RGP-W

S/S 18ct RGP FWP Edison white round 10.5-11mm stud earrings and 12mm pendant



MF790PE-RGP/PP-PRGP

S/S 18ct RGP FWP Edison pink round 10mm hook earrings and pendant with chain



IEEJ412MMS-EDI

S/S FWP Edison white round 12mm stud earrings (available in rose gold - IEEJ412MM-9Y-EDI)



IEEJ512MMS-EDI

S/S FWP Edison pink round 12mm stud earrings (available in rose gold - IEEJ5-12MM-EDI-9RG)



IP448EDI

S/S FWP Edison white round 11-12mm interchangeable cz huggy earrings



IP144-EDI-SS/ IP138-PSS-EDI

S/S FWP Edison pink drop 13mm shepherd hook earrings and enhancer



IP144-EDI-SS-W/ IP138-PSS-EDI-W

S/S FWP Edison white drop 13mm shepherd hook earrings and enhancer



IP147-ESS/PSS

S/S FWP Edison white round 10.5-11mm stud earrings and 11.5-12mm pendant



IP150EU-EDI

S/S FWP Edison white drop 11-12mm U-shaped interchangeable stud earrings



IP788E-RGP

S/S RGP FWP Edison 10mm round hook earrings



IP59E-RGP

S/S RGP FWP Edison pink round 10mm cz hoop clip earrings



IP147ESS-PINK/PSS-PINK

S/S FWP Edison pink round 10.5-11mm studs earrings and 11.5-12mm pendant



IP767ESS-W

S/S FWP Edison white round 12mm hook earrings



IP767-ESS-CZ

S/S FWP Edison white round 12mm cz hook earrings



IP767PSS

S/S FWP Edison white round 11.5-12mm pendant



IPRS40-RGP-W

S/S RGP FWP Edison white round 11.5-12mm ring



IPRS40

S/S FWP Edison white round 11.5-12mm ring



IP500NSS-WS

S/S FWP Edison white round 12mm adjustable basket necklace 50, 60, 70cm



IP500NSS-W

S/S RGP FWP Edison white round 12mm two-tone adjustable basket necklace 50, 60, 70cm



IP500NSS-RGP

S/S RGP FWP Edison pink round 12mm adjustable basket necklace 50, 60, 70cm



IP200NRGP-P/BRGP-P

S/S RGP FWP Edison pink drop 13mm toggle necklace 45cm and 8-9mm oval FWP bracelet 19cm



IP200NSS-W/BSS-W

S/S FWP Edison white drop 13mm toggle necklace 45cm and 8-9mm oval FWP bracelet 19cm



IP4060NSS-EDI/IP4060BSS-EDI

S/S FWP Edison white drop 11mm necklace 41cm + 5cm ext. and bracelet 19cm + 3cm ext.



IP86-PBSS/PSS

S/S FWP Edison multi pink round 10-11.5mm bracelet 20cm and strand 45cm



IP84-BSS

S/S FWP Edison dyed black round 10-13mm strand 45cm



IP85-WSS

S/S FWP Edison white round 11-13.5mm strand 45cm





IP82-BANGLE

S/S FWP Edison pink drop nucleated
12mm+ bangle 19cm



IP82-BANGLE-W

S/S FWP Edison white drop nucleated
12mm+ bangle 19cm



IP95-BANGLE

S/S FWP Edison white drop
11.5-12mm cz bangle 19cm



IP200BSS-W

S/S FWP white oval 8-9mm
toggle bracelet 19cm



IP085-BANGLE

S/S FWP white button
9-10mm bangle



IP026-BANGLE

S/S FWP Edison white round
11mm cz bangle



IP200BRGP-P

S/S RGP FWP pink oval 8-9mm
toggle bracelet 19cm



IP085-BANGLE-RGP

S/S RGP FWP pink button
9-10mm bangle



IP026-BANGLE-RGP

S/S RGP FWP Edison pink round
11mm cz bangle



BAMBINI COLLECTION

Pearls for your little ones



IE-EJ4-3MMS

S/S FWP white round 3-3.5mm stud earrings (available in pink - IE-EJ5-3MMS)



IE-EJ4-4MMS

S/S FWP pink round 4-4.5mm stud earrings (available in pink - IE-EJ5-4MMS)



WTH3-B11

S/S FWP white near round 3-3.5mm bracelet 11cm + 3cm ext. with lobster clasp (available in 14cm - WTH3-B14)



LTH3-B11

S/S FWP pink near round 3-3.5mm bracelet 11cm + 3cm ext. with lobster clasp (available in 14cm - LTH3-B14)



IC-W3-11-ELASTIC

FWP oval white 3-3.5mm elastic bracelet 11cm (available in pink - IC-L3-11-ELASTIC)



IP314-PB14

S/S FWP pink keshi 5-6mm bracelet 14cm + 3cm ext. with lobster clasp (available in white - IP314-B14)



IC-L5-SS-35

S/S FWP pink round 5-5.5mm strand 35cm (available in white - IC-W5-SS-35)



IP314-35CM

S/S FWP white keshi 5-6mm necklace 35cm + 3cm ext. with lobster clasp

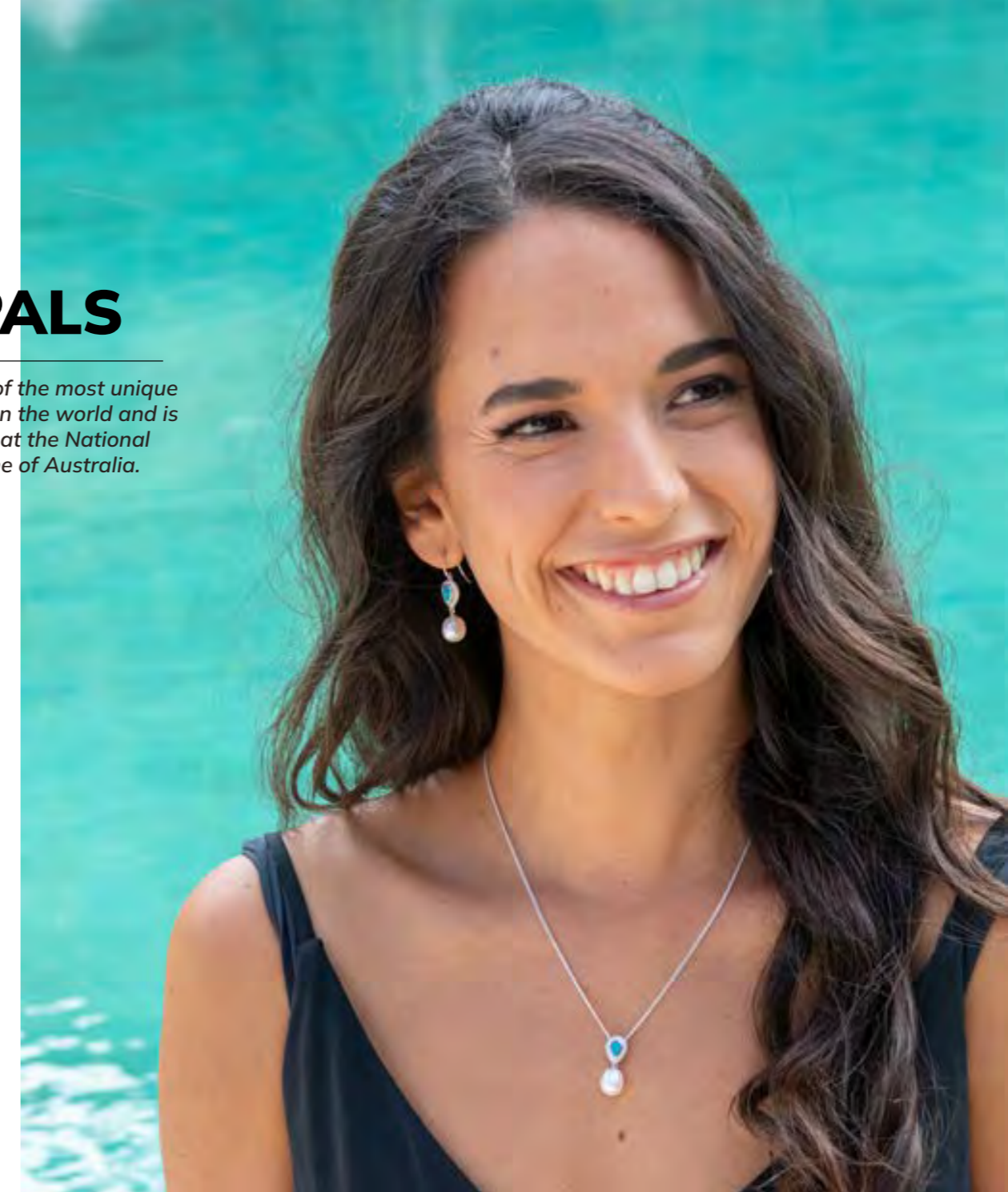


IP314-P35CM

S/S FWP pink keshi 5-6mm necklace 35cm + 3cm ext. with lobster clasp

OPALS

Opal is one of the most unique gem stones in the world and is classified at the National Gemstone of Australia.



BLACK OPAL

- Black opal a natural solid stone and is the rarest and most valuable of all opals and is found in Lightning Ridge, Australia
- Black Opal is distinguished from other opals due to its dark body tone and with a black or dark grey base with brilliant colours on the top ranging from blue to red, red being the most valuable
- The darker the body of the opal the more valuable the stone may be.
- Black Opals were first discovered at Lightning Ridge in 1903. Lightning Ridge is famous for the black opal and hundreds of millions of dollars worth of black opals have been found there.
- In 2008, the black opal was named as the 'natural gemstone emblem' for New South Wales.

BOULDER OPAL

- Solid Boulder Opal is sourced from areas in Central Outback Queensland and are the second most valuable type of opal
- Boulder opals are easily distinguished by their layer of solid brown ironstone left on the back of the stone, they are found in cavities of ironstone and sandstone boulders which are millions of years old.
- Due to the dark backing provided by the ironstone, boulder opals generally have a dark body tone which leads to a vibrancy of colour similar to that found in black opals.
- They are often cut in freeform shape to highlight their individual beauty.

WHITE OPAL

- Solid White Opals are distinguished by their pale white or light body tone, also known as "light opal"
- White opals are found in South Australia in the major opal fields of Coober Pedy, Andamooka, and Mintabie
- White opals are much more plentiful and common than other kinds of opal like black opal and boulder opal.
- White opals are the least valuable form of solid opal, this is due to the lack of darkness in the stone



OE006-SS

S/S Light Solid Opal round 5mm & 4mm with FWP white drop 9mm shepherd hook earrings (available in 9ct yg - OE006-9Y)



OP006-SS

S/S Light Solid Opal round 5mm & 4mm with FWP white drop 9mm pendant (available in 9ct yg - OP006-9Y)



OR008-SS

S/S Light Solid Opal round 6mm cz ring (available in 9ct yg - OR008-9Y)



OPAL STAND 1

(L-R) OE002-SS, OR003-SS, OP001-SS, OE002-9Y, OR003-9Y, OP001-9Y



OE007-SS

S/S Light Solid Opal pear drop 4x6mm with FWP white drop 9mm cz shepherd hook earrings (available in 9ct yg - OE007-9Y)



OP003-SS

S/S Light Solid Opal 4x6mm pear drop with FWP white drop 9mm cz pendant (available in 9ct yg - OP003-9Y)



OR009-SS

S/S Light Solid Opal 10 x 7mm pear-shaped drop cz ring (available in 9ct yg - OR009-9Y)



OE002-9Y

9ct yg Light Solid Opal 4mm stud earrings (available in 6mm s/s - OE002-SS-6MM available in 6mm 9ct yg - OE002-9Y-6MM)



OP001-9Y

9ct yg Light Solid Opal 6mm & FWP white 4mm pendant (available in s/s - OP001-9Y)



OR003-9Y

9ct yg Light Solid Opal 6mm & FWP white 2x4mm ring available in s/s - OR003-SS)



OE001-SS

S/S Light Solid Opal 7x5 with FWP white 4mm shepherd hook earrings (available in 9ct yg - OE001-9Y)



IP150EU-OK6

S/S Light Solid Opal 6mm with FWP white keshi 10-11mm u-shaped interchangeable stud earrings



OR010-SS

S/S Light Solid Opal oval 8x6mm ring (available in 9ct yg - OR010-9Y)



OE004-9Y

9ct yg Light Solid Opal oval 7x5mm stud earrings (available in s/s - OE004-SS)



OP002-9YG

9ct yg Light Solid Opal 4x6mm with FWP white drop 9mm pendant (available in s/s - OP002-SS)



OP057-9YG

9ct yg Light Solid Opal 8x6mm with 2x FWP white drop 8.5-9mm lariat 42cm + 3cm ext. (available in s/s - OP057-SS)



OR007-9R

9ct rg light solid Opal 3mm x 9 ring (available in 9ct yg - OR007-9Y)



OR007-SS

S/S light solid Opal 3mm x 9 ring



OR005-SS

S/S Light Solid Opal 4mm & white 2.5mm FWP ring

LUXURY PEARL & OPAL JEWELLERY

IKECHO

A U S T R A L I A

www.ikecho.com.au | enquiries@ikecho.com.au | (02) 9266 0636

263 Sussex St. Sydney NSW 2000

All product photography is for illustration purposes only.
Depiction of photographed products will vary slightly to real life.