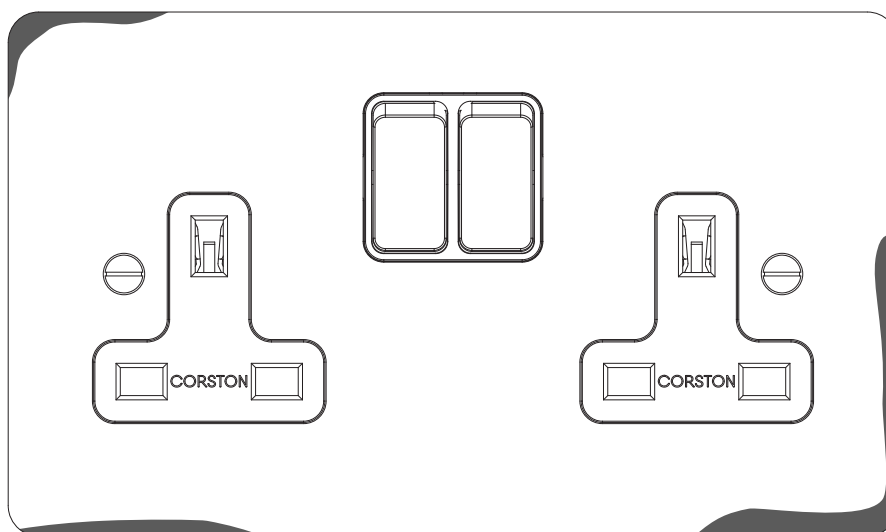


Corston Care Guidance

Wet plaster and lime care guide

Corston electrical products shouldn't be fitted to wet surfaces like plaster or paint. The surface must be dry and fully cured before installation.

Buildings that are constructed with lime plaster sometimes produce an environment that attacks the brass in Corston products, causing discolouration that begins at the edges and quickly works its way inwards. This is because lime accelerates the natural high reactivity of brass.



If you've noticed rapid blackening of any of your Antique Brass switches and sockets that are in contact with lime plaster walls, please get in touch with us for advice.

The following step-by-step process will resolve the issue:

Remove the switch or socket front plate and allow the walls to completely dry.

Refinish the Antique Brass plate to remove blackened areas – this can be done with our Antique Brass care kit.

Put a protective barrier between the lime plaster and the brass plate. The easiest way to do this is with a paper 'plate', which can be sealed with PVA glue or clear lacquer spray. The paper barrier will sit between the wall and the back of the brass plate. We can provide you with these paper templates when you get in touch.

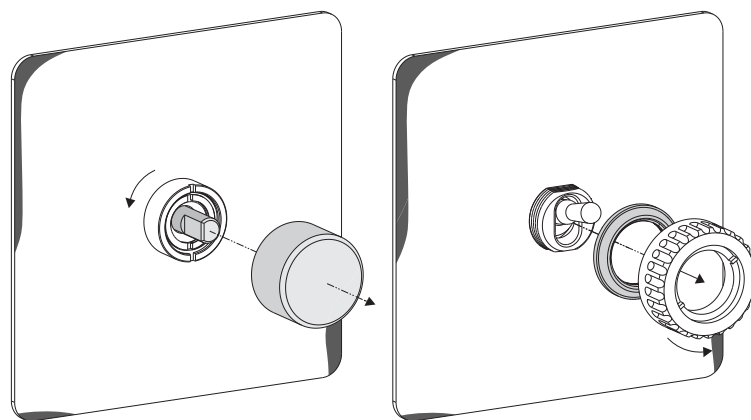
Prefer to see the instructions in a visual format? Just keep scrolling.

Corston Care Guidance

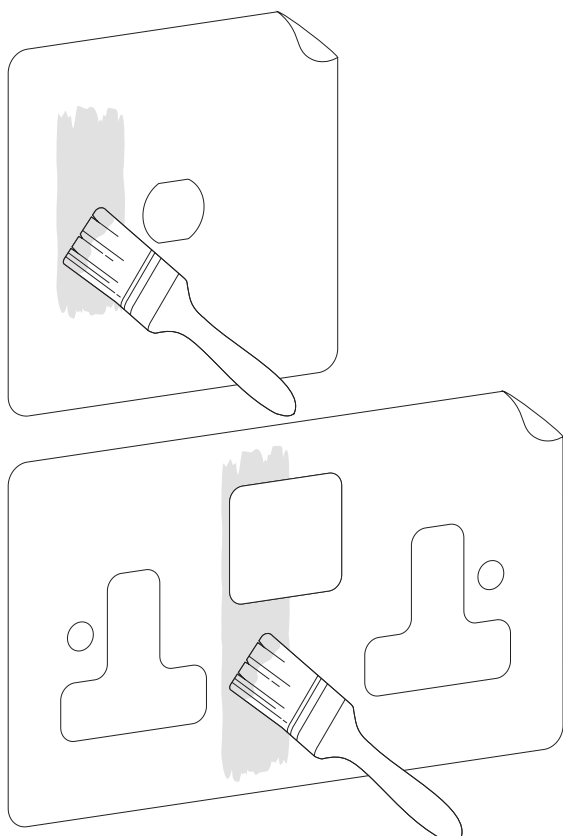
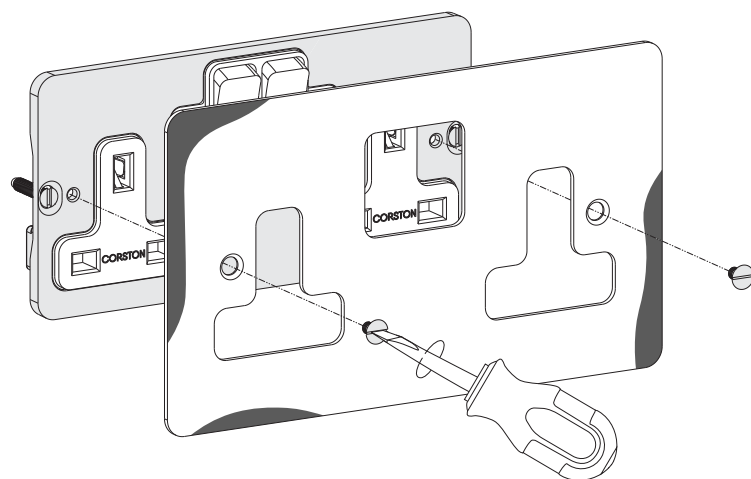
Wet plaster and lime care guide

Remove front plate

Remove the front plate in preparation for refinishing.



eu.corston.com/support
hi@corston.com
01249 549332



Seal paper template

Cover the paper template with PVA glue or a clear lacquer spray. Leave to dry completely before reassembling.

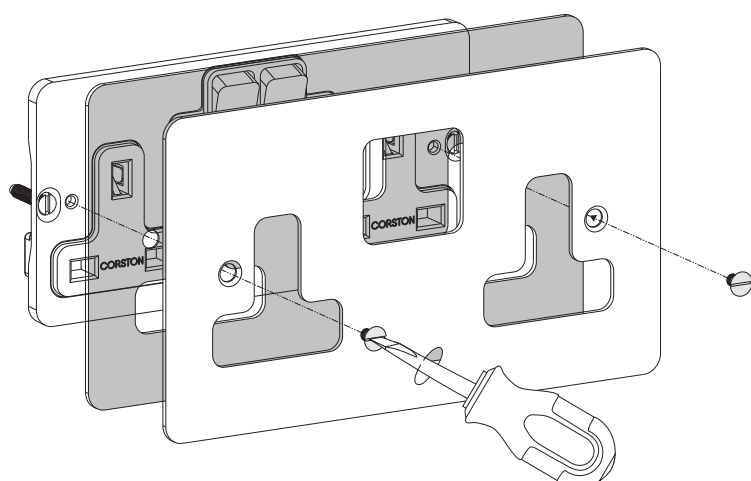
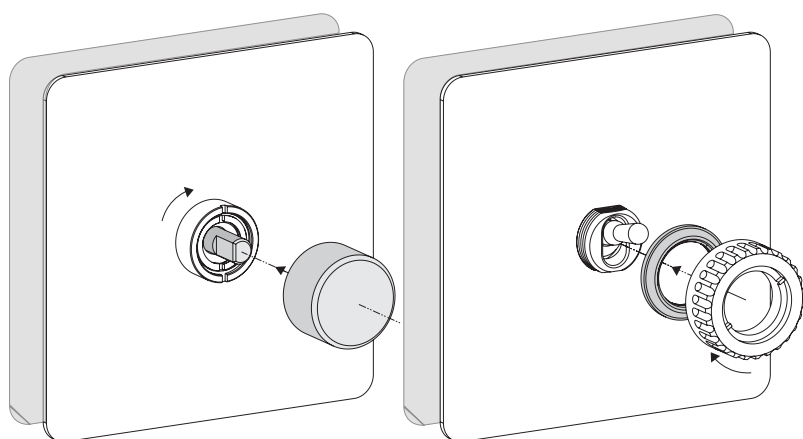
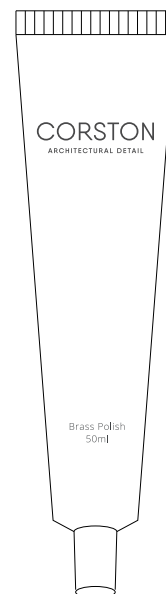
eu.corston.com/support
hi@corston.com
01249 549332

Corston Care Guidance

Wet plaster and lime care guide

Polish front plate

Restore the Antique Brass finish using our care kit.



Reinstall front plate

Place the paper template behind the brass plate to act as a protective barrier.