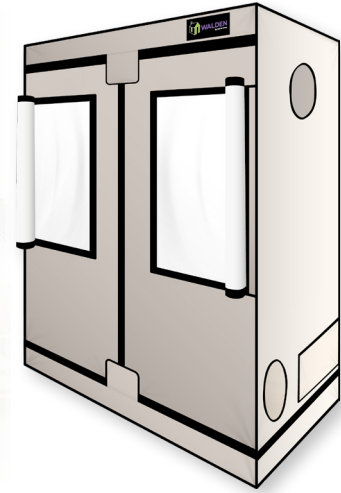


# 2'x4' Walden White Grow Tent



## EcoWhite PEVA – Triple Layered

The 100% toxin-free material creates a safe, stylish and easy to clean growing area. The tent interior is 10% more reflective than even the most reflective mylar tents.



## Double-wide Front Doors

Double-wide front doors allow growers easy access to plants or to put them on full display. Light-blocking zipper covers prevent light leakage.



## Infinity View Front Windows

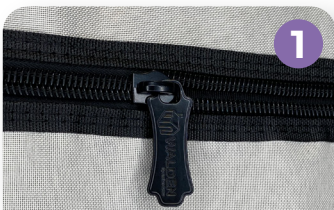
Extra-large front viewing windows let growers check on plants without disturbing humidity or temperature. Window covers roll back and secure with velcro straps.



## 2-year Warranty

Walden Tents are manufactured using 600D canvas with industrial strength zippers. Tents come standard with an industry-leading 2-year warranty.

## 2'x4' Walden Grow Tent Features



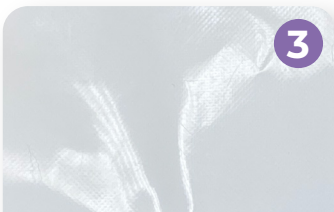
1

Heavy Duty Zippers



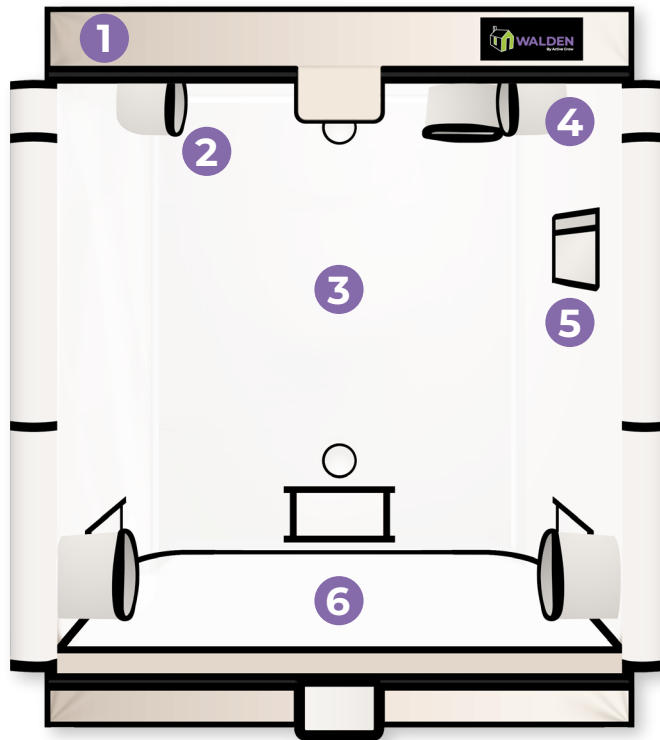
2

Solid Locking Frame



3

EcoWhite PEVA Liner



4

Ducting Ports x5



5

Mesh Tool Bag



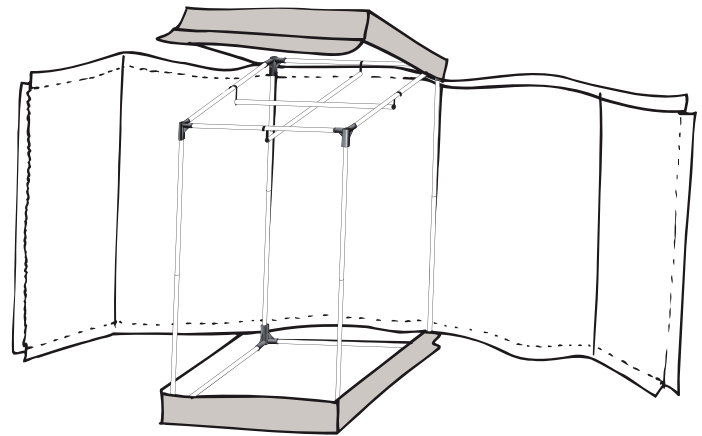
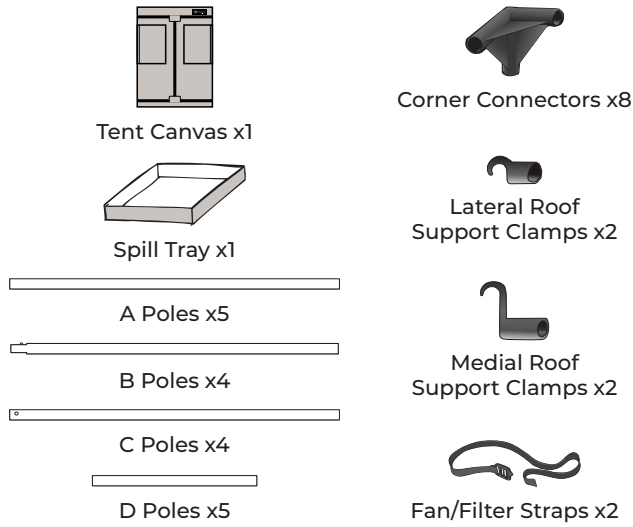
6

Removable Spill Tray

# 2'x4' Walden White Grow Tent



## 2'x4' Walden Grow Tent Contents



Installation is quick, simple and requires no tools. Tent may be cleaned using soap and water or other standard hydroponic sanitizers.

## 4" Ventilation Kit



### 4" Inline Fan

- 60W / 120V
- 188 CFM / 2400 RPM
- Corded multi-speed controller
- Silent operation <31 dB
- 4" aperture - 11.6"(l) x 8"(w) x 7.7"(h)



### 4" Carbon Exhaust / Intake Filter

- Removes odor, spores, pollen, chemical irritants and other airborne particles
- Machine-washable pre-filter (1pc)
- Recommended airflow 150-200 CFM
- 4" aperture 2" flange - 8"(d) x 12"(l)



### 4" Ducting & Clamps

- High-quality flexible aluminum
- Corrosion & heat resistant
- Reinforced steel-wire design
- Stainless steel 4" ducting clamps (3pcs)
- 4"(d) x 25'(l)

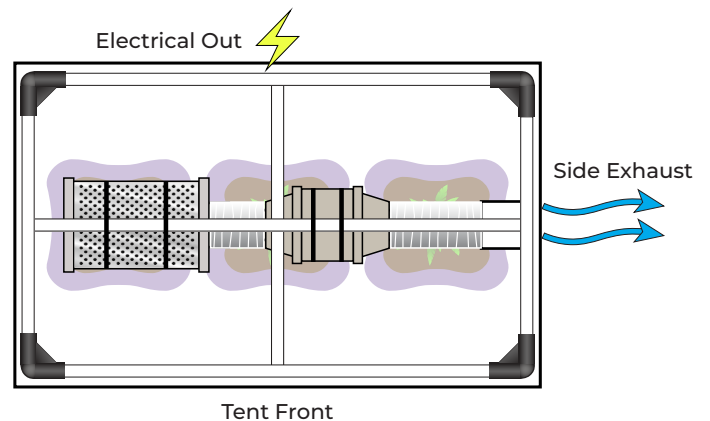
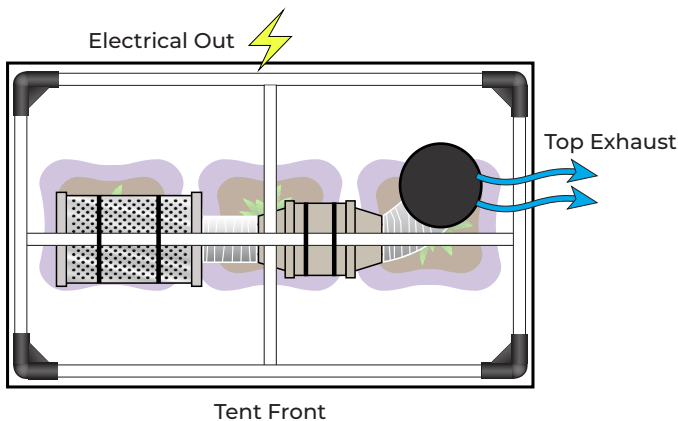


### 1/8" Hydroponic Hangers

- Heavy duty 1/8" braided rope with carabiner and ratchet (4pcs)
- Fully adjustable and auto locking
- Supports up to 150 lbs/pair
- Designed to hang lighting, fan, filter, etc.

## Mounting Configurations\*

4" Inline Fan + 4" Carbon Filter



\* Mounting configuration diagrams are examples of common setups using the Active Grow 4" Inline Fan and 4" Carbon Filter in a 2'x4' Walden Grow Tent. Other fan and filter combinations are possible including using them outside of the tent.

# 2'x4' Walden White Grow Tent



SPECIFICATIONS		2'X4' WALDEN WHITE GROW TENT	
Model number		AG/24TENT/W	
Color		EcoWhite	
Dimensions (l x w x h)		47.24"x23.62"x59.06" (120x60x150cm)	
Weight		19.40 lbs (8.8 kg)	
Tent material		Triple-layered 100% PEVA & toxin-free (Exterior 600D canvas / Center light-blocking vinyl / Interior reflective vinyl)	
Pole diameter		0.63" (16mm)	
Pole material		White powder coated steel	
Max load capacity		110 lbs	
Doors		2 main front doors	
Windows		2@16.25"x21.25" (41.28x53.98cm)	
Ducting ports		4@6" (15.24cm), 1@8" (20.32cm)	
Electrical ports		2@4" (10.16cm)	
Vents		3@11.5"x6" (29.21x15.24cm)	
Light-blocking zipper covers		2	
Recommended pot quantity		3x3 gallon pots / 2x5 gallon pots	
Warranty		2 years	

AG-24TENT-W-DS-120622