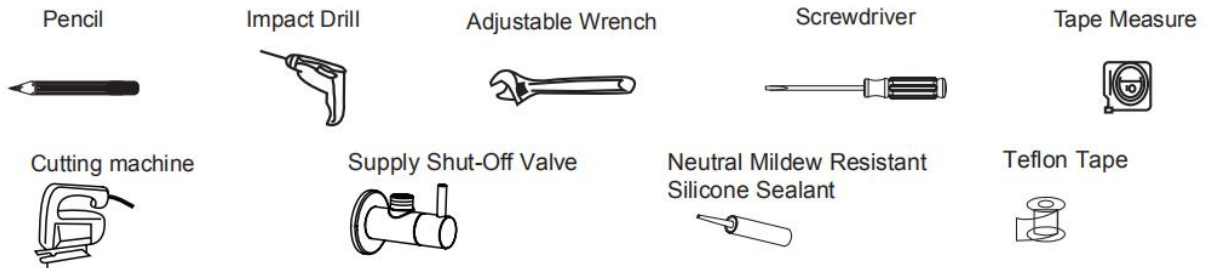


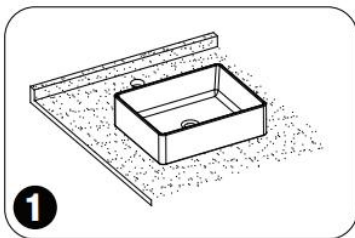
Top mount

INSTALLATION INSTRUCTIONS

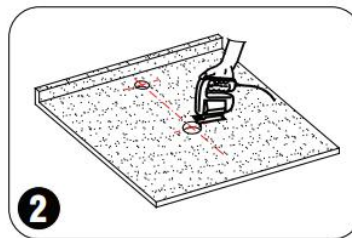
A HELPFUL TOOLS



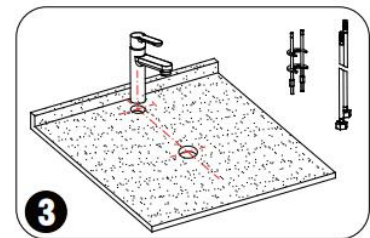
B INSTALLATION PROCEDURES



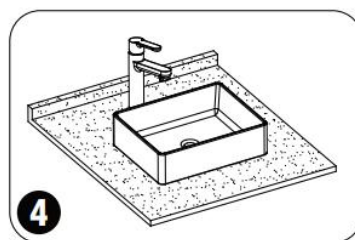
1 Place the basin on the counter, and determine the installation positions for the faucet and basin according to the installation requirements for the supporting faucet.



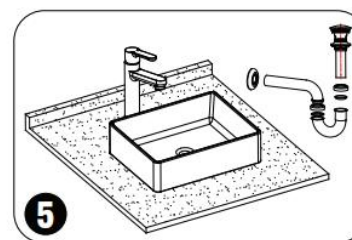
2 Mark the faucet and basin at the determined installation positions with a pencil, use the cutting machine or electric drill to make holes, and then sand the edge of the holes.



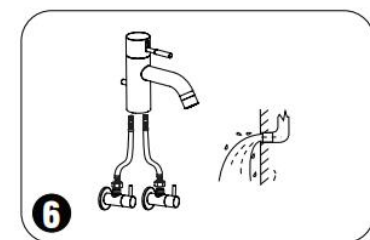
3 Install the faucet and its components.



4 Apply mildew-proof neutral glass cement on the contact area of the basin bottom part and counter, place the basin properly on the surface, and then firmly press it (let it dry for 24 hours).



5 Install a lever faucet to the basin.



6 Connect the water supply pipe to the faucet, and carefully bend the pipe to make it match the water supply shut-off valve. Ensure the pipe is sealed. (Always wash the sediments in the water supply pipe away before connecting the shut-off valve.)

Remark

This installation instruction may suitable for any of top mount basin or vessel