



EN

User guide

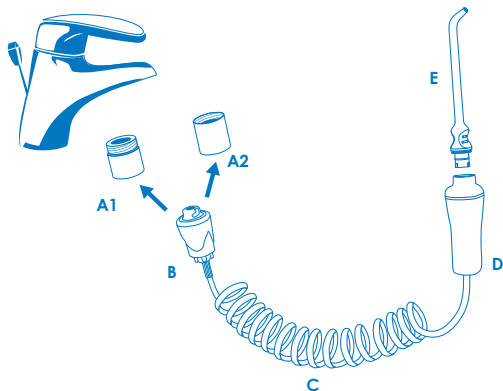
www.waterpowered.eu

customer@waterpowered.eu

800577477



General Diagram



Special Aerator Filter (A1, A2)

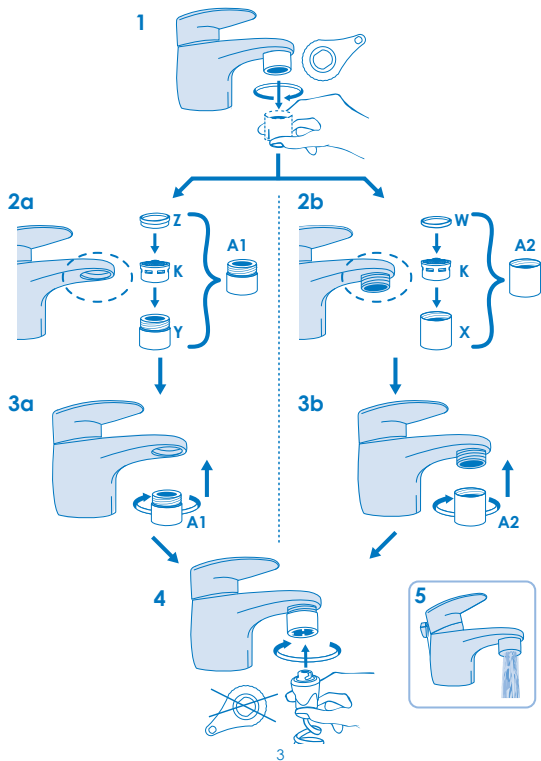


Addy (O)* - Universal adapter (Included only with "Travel" version)



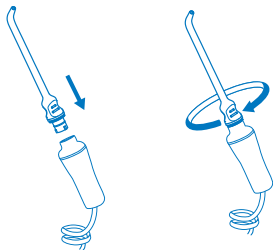
* not included in all the packages – see "quick start guide" for content

Installation of special filter to the faucet

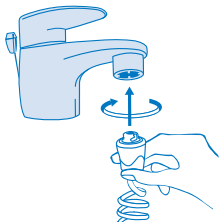


How to use

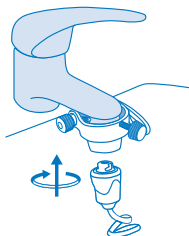
6



7a



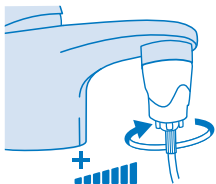
7b Accessory



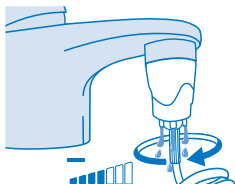
8



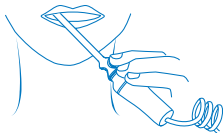
9a



9b



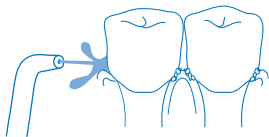
10



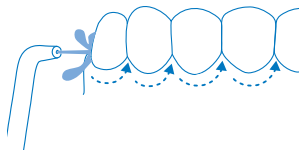
11



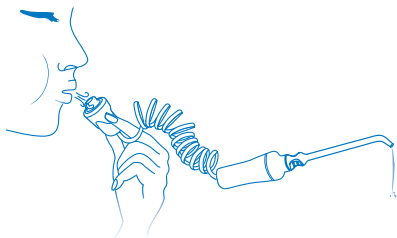
12



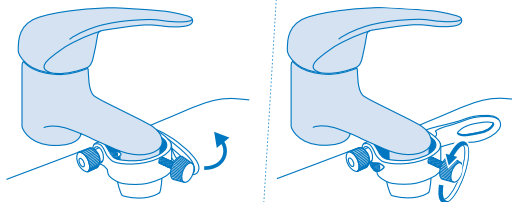
13



14



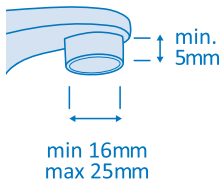
15 Accessory



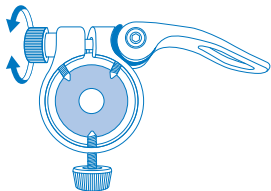
Addy Installation

(For use of SoWash with *Addy*, travel adapter.
To use SoWash at home, see step 1-4).

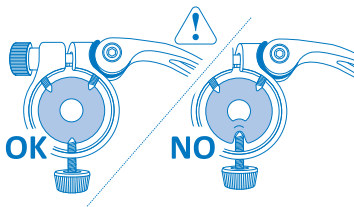
16



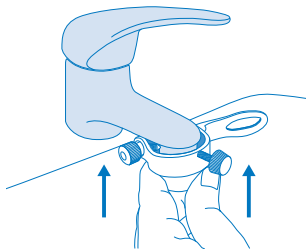
17



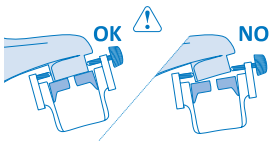
18



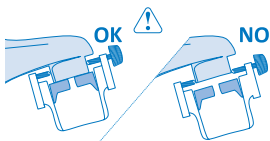
19



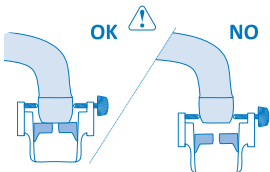
20



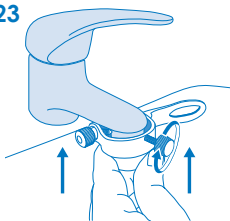
21



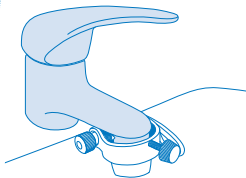
22



23



24



THE PACKAGE CONTAINS:

See the "QUICK START GUIDE" card included in the package.

WARNINGS

- Do not use if the product or any of its components are broken or damaged.
- Do not direct the jet of water under the tongue, to the eyes, nose, ears or other sensitive areas.
- Do not use in presence of open sores or wounds in the mouth.
- Do not use water that is too hot or too cold, it is recommended to keep the temperature lukewarm.
- Do not bite down on the tips during use, or tear them with your teeth.
- Only use Water Powered tips and accessories..
- SoWash is not recommended for children under the age of 12 years, except in the presence of an adult.
- Do not use SoWash with water systems with pressure over 5 BAR.
- Use SoWash only as directed in these instructions.

INSTALLATION OF SPECIAL FILTER TO THE FAUCET

The installation of the special filter to the faucet should be done only the first time you connect SoWash: the exclusive SoWash aerator filter does not need to be removed and replaced after each use because it allows normal use of the faucet (fig.5), providing water ventilation and filtration. (The special filter holder from Water Powered connects to all the faucets with removable filter holder according CEN-EN 246 standards).

To connect the SoWash aerator filter to your faucet (bath sink, shower**):

- 1 - Unscrew the aerator filter holder from your faucet, making sure the gasket is also removed (fig.1). If necessary, use the key (G - 2. included only with several packages - see "QUICK START

GUIDE" card).

- 2a - If your faucet has an internal thread (fig.2a), insert the aerator filter (K) inside the special filter holder with an external thread (Y) and place the gasket with step section (Z) on the aerator filter (fig.2a).
- 2b - If your faucet has an external thread (fig. 2b), insert the gasket with rectangular section (W) and the aerator filter (K) inside the special filter holder with an internal thread (X) (fig.2b).
- 3 - Screw the assembled special filter holder with aerator (A1/A2) to your faucet (fig.3a/fig.3b). For an easier installation, use dry hands. Use the quick connector (B), turning counterclockwise (fig.4), to tighten the filter. Do not force.

** Through the Multifunction shower joint available in the range of Water Powered accessories and sold separately.

To view an installation demo, watch videos on www.sowash.it in the "how to use" section.

If necessary, it is recommended that the aerator filter be cleaned or replaced with normal aerators filters available on the market.

HOW TO USE SOWASH

1. Mount your desired accessory on the handle by inserting and rotating the tip on the handle (fig.6).
2. Connect SoWash to faucet filter holder (A1/ A2) with the quick connect (B), by inserting and turning counterclockwise (fig.7). For a better grip, hold the quick connector with dry hands.
3. Leaning over the sink, insert the SoWash tip into your mouth, making sure that the hole for the exit of the water is directed to the teeth.
4. Open the water gradually until it reaches the desired temperature and pressure.
 - The water temperature should be lukewarm.
 - SoWash is equipped with a safety valve for automatic control of the water flow (B - patented system). The water pressure in

excess is automatically released into the sink (fig.8) to ensure a safe and pleasant water jet. You may hear a sound, like a whistle, when the faucet is fully open. To eliminate this sound simply decrease the water pressure.

- Several of the SoWash models are equipped with the "Hi-Flow" system that will allow you to turn off the water flow control valve in order to take full advantage of the faucet water pressure (check "QUICK START GUIDE" card to see if the SoWash model in this package has the "Hi-Flow" system).

If you prefer a more powerful water jet, disable the valve by rotating the Hi-Flow valve counterclockwise until it stops (fig. 9a) and open the faucet gradually until the desired pressure is reached. To turn on the water flow control valve, make sure the faucet is closed and rotate the valve clockwise until it stops (fig. 9b), while holding the connector with the other hand, or by performing this operation with the connector unfastened from the faucet.

The "Hi-Flow" system will have an effect on the water flow from faucets with a water pressure equal to or greater than 3 bar.

5. Rinse your mouth and interdental spaces as needed.
 - Keep your mouth slightly open to prevent splashing and let the water escape, while leaning over the sink. (fig.10-fig.11).
 - For better cleaning, direct the jet perpendicularly to the gumline and clean all areas around and between teeth and along the gumline (fig.12-fig.13), both on the front and inside the dental arches.
6. When you are done, close the water flow before releasing the quick connector. Disconnect SoWash before storing it.
7. Blow inside the quick connector (B) to release the remaining water in the hose (fig.14) and dry SoWash before storing it. Before each use, we recommend

connecting SoWash to the faucet and letting water flow down to the basin for 10-15 seconds to rinse the inside of the hose.

UNIVERSAL ADAPTER ADDY

(included only with several packages - see "QUICK START GUIDE" card)

Thanks to the Addy adapter, you can connect SoWash to the faucet in a simple and fast manner, without the need to mount the special filter holder .

Addy is ideal for use on the road, in a hotel or in case of faucets with non-standard threads.

Addy can be connected to all faucets with circular filter holder for water outlet with an outer diameter from 16mm to 25mm and with a minimum height of 5mm (fig.16).

WARNINGS AND RECOMMENDATIONS FOR THE USE OF ADDY

- Gradually open the faucet, never quickly and never at the maximum water pressure;
- While the faucet is open, do not try to reposition or move Addy to avoid leaks;
- Initially, there may be some water leakage for a few seconds from the top of Addy. It will quickly end. If the leakage continues or it is excessive, repeat the installation procedure of Addy to the faucet;
- Make sure the filter holder is tightly secured to the faucet to prevent leakage when the adapter is mounted;
- The use of Addy in case of excessive pressure while mounting, and repeated use on the same faucet, may cause light marks on the filter holder of the faucet due to contact with the screws (for extended use of SoWash on the same faucet, we recommend using the threaded special filters);
- It is not recommended to leave Addy mounted to the faucet; if this happens, before each use check that the hold is solid, making sure that the screw (P1) is tightened;
- When tightening the screw (P1) be careful not to deform the ring (Fig. 18);
- Should Addy come off the faucet, repeat

the procedure of assembly Addy to the faucet, tightening the screw P1 and the adjustment wheel P2;

- Do not disassemble the components of Addy;
- Contains small parts - keep away from children.

ADDY - ASSEMBLY TO THE FAUCET

1. Place the lever in the open position (Fig. 17) and tighten the adjustment wheel (P2) until the lever is pulled, but without using excessive force;
2. Check that the tightening screw is sufficiently loosened to allow the insertion of Addy on the faucet's filter holder and that the seal is properly inserted in its housing with no visible deformation (Fig. 18);
3. Hold Addy (Fig. 19) pushing up against the faucet until the seal fully adheres to the filter holder on the faucet, making sure that:
 - The tightening screw (P1) is on the front or side of the faucet (never in the back);
 - Addy follows the inclination of the filter holder, to allow the seal to adhere completely and ensure a tight hold (Fig. 20);
 - Addy is placed as high as possible with respect to the filter holder of the faucet (fig. 21).

Particular cases:

- Some filter holders have a slight indentation: make sure that the tip of the screws do not lean in the vicinity of the recess to prevent Addy from coming off.
 - In the case of faucets that are slightly flared or rounded (e.g. some types of kitchen faucets), mount the screws on the straight part of the filter holder, never on the flared part to avoid Addy from coming off the faucet (fig. 22).
4. While holding Addy against the faucet, tighten the screw (P1) until it is attached to the faucet (fig. 23), without pressing it too much;

5. Turn the lever bringing it to the closed position (Fig. 24);

Now you can connect your SoWash (fig. 7b);

6. When you are done, and after disconnecting the device, put the lever in the open position (fig. 15) and, if necessary, loosen the screw;
7. After using Addy, allow it to dry and leave the screw (P1) slightly tightened checking, however, that the tip of the screws are above and don't deform the seal (fig. 18).

SPARE PARTS AND ACCESSORIES

You can view the entire SoWash product line on www.sowash.it

Hydro-jet Tip: with single water jet.

Hydro-pulsar Tip: with triple pulsing jet.

Vortice Tip: with three pulsating jets converging on the same point that, acting alternately from three different angles, create a whirlpool effect which removes even the most resistant food residues from interdental spaces. Available in the "Active" and "Spacer" versions.

Vortex Brush Tip: Toothbrush with a triple pulsating water jet and "vortex" effect for an optimum cleaning. Available with bristles of diverse levels of softness.

Air Tip: a water jet mixed with micro air bubbles (International Patent Pend.). The oxygen contained in the micro bubbles helps to eliminate bacteria that cause plaque, both above and below the gum line.

Hydro-jet Strong Tip: with a powerful and precise water jet. To be used with low water pressure only.

Ball Spray Tip: with spray water jet, suitable for sensitive gums.

Universal Adapter "Addy" to use SoWash without replacing the filter holder, ideal while travelling, in hotels or in case of non-standard faucet threads.

Multi-function shower joint: to connect SoWash to the shower tube

SoProx Interdental brush 3 in 1 can be

used as a normal interdental brush, on the provided handle and on the SoWash system as a Hydro-interdental brush.

Organizer: mounts easily to the wall or bathroom mirror, and allows you to easily store SoWash and its tips.

SoWash Metal Filter holder available with standard thread, internal or external.

Adapters for faucets with non-standard threads.

WARRANTY AND ASSISTANCE

Water Powered srl guarantees the main body of SoWash (quick connector B + hose C + handle D) for 3 years from the date of purchase. Adapters and filter holder for the faucet, tips and all accessories are explicitly excluded from the warranty. To take advantage of the warranty, the customer must present to Water Powered srl the original sales receipt as proof of date of purchase and, if required, the product itself. The warranty is not valid if the product has been misused or has been altered or damaged after purchase. Water Powered srl may also at its discretion replace only parts of the product found to be defective. The installation is the responsibility of the consumer and is not covered by this warranty.

The manufacturer, distributors and retailers refuse any liability for any damages that may, directly or indirectly, occur to people or property from non-compliance to all the requirements specified in this user manual, its installation, use, counter indications and maintenance.

The company reserves the right to make partial or complete modifications to the product, which may slightly differ from the descriptions in the present manual.

For any clarification or information please visit www.sowash.it or contact customer care via email at:

customer@waterpowered.eu (or support@waterpowered.us - USA and Canada only).