



EN

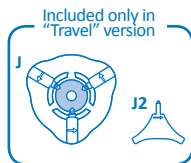
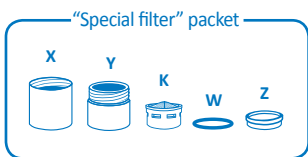
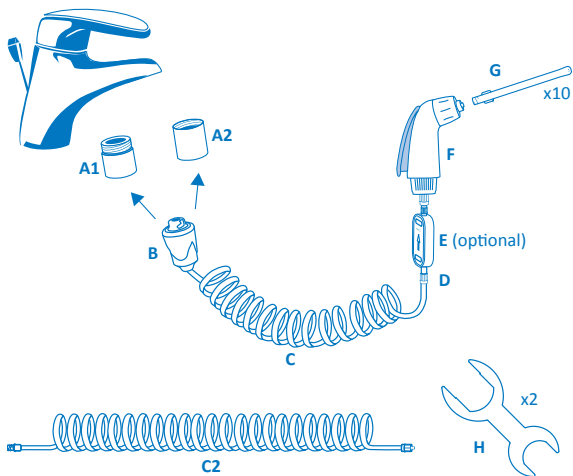
User guide

www.waterpowered.eu

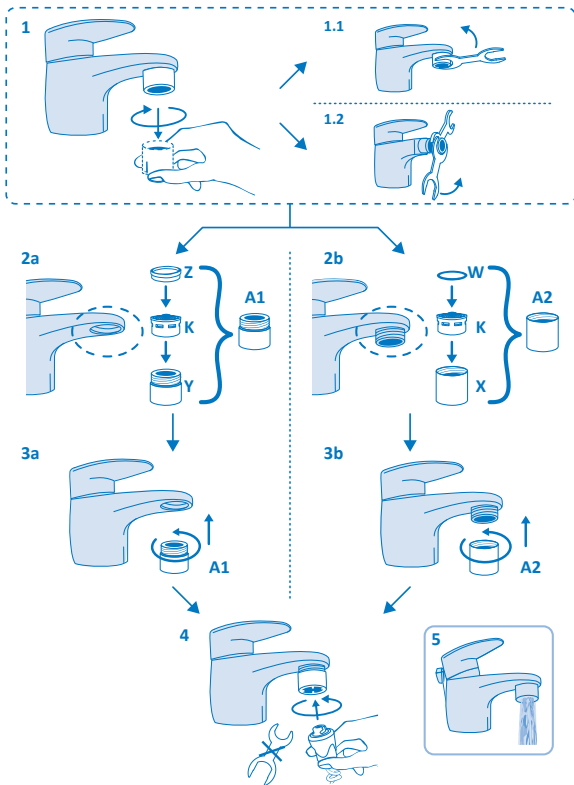
customer@waterpowered.eu

800577477





Filter assembly to the tap

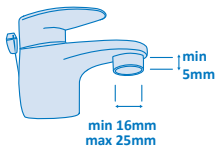


Attention: for “Basic” version go to ref. 15

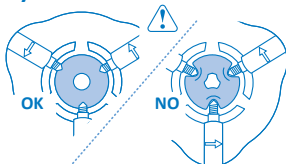
Addy Assembly

(From ref. 6 to ref. 14 only for “Travel” version -
for use at home see from ref. 1 to ref. 4)

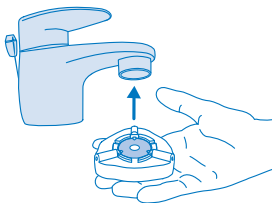
6



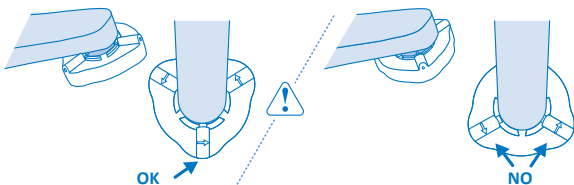
7



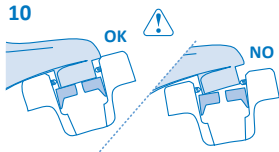
8



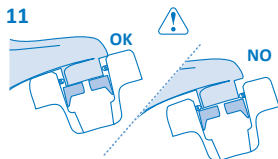
9



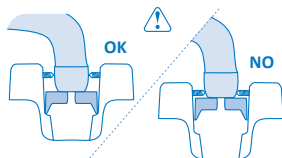
10



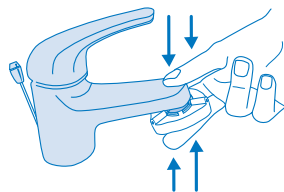
11



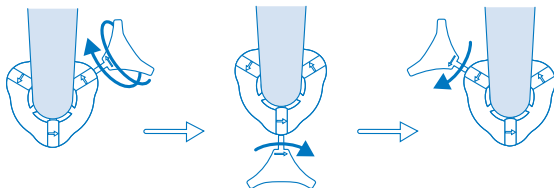
12



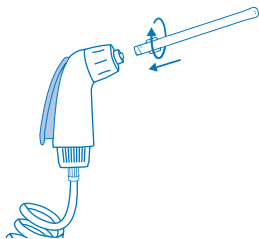
13



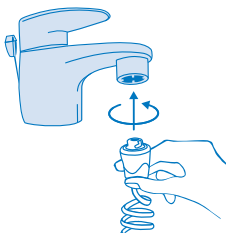
14



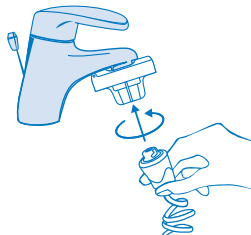
15



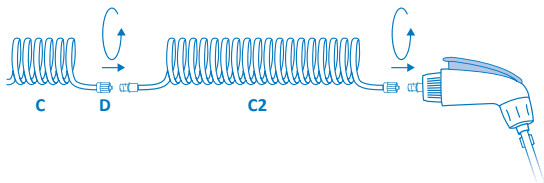
16a



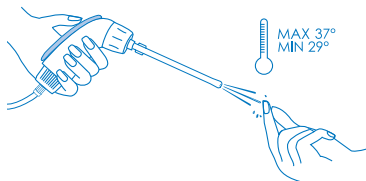
16b Only for "Travel" version



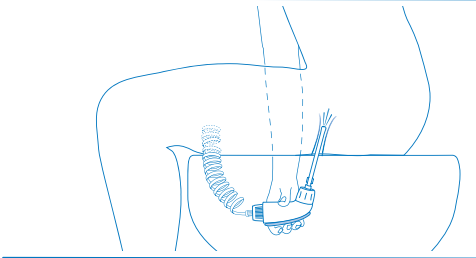
17



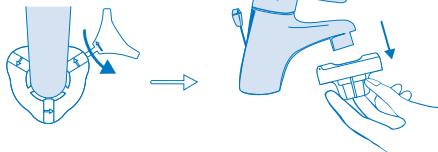
18



19



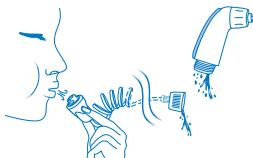
20 Only for "Travel" version



21



22



WHAT IS PINK SHOWER?

Pink Shower is a medical device for domestic vaginal douches.

WHY USE PINK SHOWER

Pink Shower is used to remove residual blood inside the vagina after menstrual cycle, to perform a thorough cleaning or to soften and expel excess vaginal secretions.

Pink Shower is recommended for proper vaginal hygiene, vaginitis, pre-post menopause syndrome.

It is always necessary to consult a doctor before using the device.

CONTRAINDICATIONS

Pink Shower must not be used in cases of: post-operation and post menopause vaginal dryness, pregnancy; in health conditions that require special precautions, in some cases of skin hypersensitivity caused by irritation, wounds, bruises, surgeries and/or other inflammations. It is always necessary to consult your physician before using the device.

THE PACKAGE CONTAINS:

- **“Special Filter” pack containing:**
 - Special Attachment with internal thread (X)
 - Special Attachment with external thread (Y)
 - Aerator Filter (K)
 - Gasket (W – with circular section) for Special Attachment with internal thread.
 - Gasket (Z – with rectangular section) for Special Attachment with external thread.
- **Connector (B) with 80cm spiral tube (C) joint (D) and handle (F)**
- **1,50 m. spiral tube extension (C2)**
- **Double filter membrane of 1,2 microns (E - Accessory).**

- **Bag containing n. 10 disposable vaginal cannulas (G) - length 11 cm - max. diameter of insertable part 7 mm**
- **Key for unscrewing filters (x2 – H)**
- **Universal Adaptor Addy (J)* with fastening key (J2)* – (Accessory)**
- **Pink Shower carrying bag**
- **Multilingual manual**

**** Only included in the “Travel” package.**

FILTER ASSEMBLY*

To connect the Pink Shower aerator filter to the tap (bath sink, shower** or bath tub):

- 1 - Unscrew the aerator filter of your tap and make sure that the gasket is removed (fig 1). If necessary, use the supplied key (H) - fig. 1.1. In case of taps with a swivel mount filter (bidet type - fig. 1.2) hold the upper part of the filter with one of the keys (H) and with the other key unscrew the lower part (the one to be replaced with Pink Shower Filter).
- 2a - In case of tap with internal thread (fig.2a), insert the aerator filter (K) inside the special attachment the rectangular shaped gasket (Z) on the aerator filter (fig.2a). Screw then to the tap the filter with external thread (A1) just assembled (fig.3a).
- 2b - In case of tap with external thread (fig.2b), insert the circular shaped gasket (W) and the aerator filter (K) inside the special attachment with internal thread (X) (fig.2b). Screw then to the tap the filter with internal thread (A2) just assembled (fig.3b).
- 3 - Screw the new Pink Shower filter with dry hands, using the connector (B) and turning anti-clockwise (fig.4). In case of taps with a swivel mount filter (bidet type), with a key (H) hold the upper part of the filter and mount the Pink Shower filter supplied with connector.

* The installation of the filter to the tap should be done only the first time you connect Pink Shower: **the exclusive filter for tap Pink Shower does not need to be removed and replaced after each use because it allows normal use of the tap** (fig.5), providing ventilation and filtering of the water. (The special filter Pink Shower is adaptable to all taps UNI EN 246. Such a standard is usually respected by all the filter taps on the market that present an aerator that can be unscrewed).

** Through the “multifunction shower joint” present in the range of accessories and sold separately.

To view the phases of assembly, watch videos on www.pink-shower.com in the “video” and “how to use it” sections.

QUICK UNIVERSAL ADAPTOR ADDY

Included only with Pink Shower Travel or you can purchase it separately as an accessory. The adaptor Addy (J) allows you to connect Pink Shower to the tap in a quick and easy way, without

having to mount the threaded filter (A1 or A2). It is ideal for use while travelling, in a hotel or in case of non-standard tap thread.

Addy can be connected to all the taps with water filter with an outside diameter from 16mm to 25mm and minimum length of 5 mm (fig.6).

ASSEMBLY TO THE TAP FOR ADDY

Check that the three screws are loose and the gasket is properly in place, without visible deformation (fig.7). Hold Addy as in figure 8, pushing up until the gasket completely adheres to the filter holder.

Place Addy under the tap making sure that:

- one of the 3 screws is aligned with the tap and the two remaining screws are on the

side, making sure that none of the screws is under the neck of the tap (fig.9);

- it follows the inclination of the filter holder of the tap to allow the gasket to adhere completely and ensure the seal (fig.10);
- it is as high as possible compared to the filter holder of the tap (fig.11).

Special Cases

- Some filter holders have a slight nook: please make sure that the tips of the screws do not lean against the nook to prevent Addy from detaching.
- In case of taps that are slightly flared/rounded (like kitchen taps), mount the screws on the straight side of the filter and never on flared parts to prevent the adaptor from coming off the tap (fig.12).

Holding Addy to the tap with the aid of your thumb as shown in fig. 13, use the fastening key (J2) to screw the three screws to a secure hold on the tap, following the direction indicated by the arrow positioned on the cylindrical housing of the screws (fig.14). Once you tighten one of the screws all the way, it is recommended for even stronger to tighten the remaining two screws, without forcing them (fig.14).

While tightening the screws, be careful not to damage the inner gasket to avoid compromising the hold (fig.7).

INSTRUCTIONS and SUGGESTION FOR ADDY:

- For a correct use of Pink Shower it is sufficient gradually open the tap, do not open the water flow all at once. For a correct use of Pink Shower it is sufficient to open the tap not at full pressure, but just until the water flows from the valve located in the quick connector.
- Initially, for the first few moments, there

could be some small leakage of water from the upper part of Addy but this will quickly stop. If the leakage persists or becomes excessive, it is recommended to repeat the process of hooking Addy to the tap.

- Don't touch or move Addy with opened water flow from the tap, in order to avoid compromising the seal.
- When you are done with Addy, simply unscrew one of the three screws to remove it from the tap (fig.20).
- After using Addy it is recommended to dry it and leave the screws slightly tightened controlling, however, that the tips of the screws don't deform the gasket (fig.7).
- If you don't use Addy for a long time, it is possible that upon the first re-use the movement of the screws may be harder: without mounting Addy to the tap, try to unscrew and tighten the screws several times to unlock and facilitate the movement without force. Should the screws not unlock, use some lubricant spray in the screw holes where you would insert the fastening key.
- The use of Addy in case of excessive pressure when tightening and repeated use on the same tap, might cause light marks on the filter holder of the tap due to contact with the screws, being Addy intended for use with faucets occasionally, such as while traveling. At home or for prolonged use on the same faucet, you should use the special filters Pink Shower.
- It is not recommended to leave Addy mounted to the tap, although if you do, for each new use is recommended to check that the hold is solid, making sure the 3 screws are well tightened.
- When you unscrew the screws, do not force

them once they've reached the end of the travel.

- For extended use of Pink Shower on the same tap, it is recommended to use special filters with threaded adaptors.
- Make sure the filter holder is screwed well on the tap to prevent leakage once the adaptor is mounted.

HOW TO USE PINK SHOWER

1. Screw a cannula (G) to the joint of Pink Shower handle (F) (fig. 15).
2. Connect Pink Shower to tap filter (A1 o A2) or Addy adaptor (J) with quick coupling (B) by inserting and rotating counterclockwise (fig. 16a e 16b); for a better grip, connect with dry hands.
3. Only in case where the distance between the tap and the place chosen for the douching (toilet, bathtub, etc.) is greater than the length of the 80 cm (C) preassembled tube, install the extension (C2) and screw the end fittings (fig. 17).
4. While pressing the lever of handle (F), from the faucet control adjust water pressure and temperature (we suggest warm water - 37°), checking with your hand the jet of water coming out of the cannula (Fig. 18).
5. Stop the flow of water in the handle, sit on the toilet or bidet and, keeping the handle, place Pink Shower between your legs, gently inserting the cannula into the vaginal duct (fig. 19).
6. Pressing the lever grip, start washing the vaginal area (fig. 19).
7. After the douche, cease to press the handle lever, gently pull the cannula and close the water tap.
8. Unhook the quick coupling (B) from the filter tap.
9. Unscrew the cannula from the handle,

dry thoroughly and place it into the Pink Shower.

WARNINGS

- **Water Temperature:** it is best to use Pink Shower with warm water. It is recommended, however, not to exceed 37°. Once connected Pink Shower to the faucet, check with the hand the temperature of the water that comes out from the handle or from the cannula, keeping in mind that the sensitivity to heat or cold of the vaginal duct is greater than that of the hand. While using Pink Shower, in case the water temperature is too hot or too cold, immediately adjust the faucet temperature. It is possible that, once connected Pink Shower to the faucet, some models of gas burners may not start to heat the water: to overcome this problem, it is sufficient to open the water flow at the same time with another faucet in order to start up the boiler.
- **Vaginal cannula (G):** the depth of insertion varies from person to person. It is recommended to insert the cannula not more than 5-6 cm. The vaginal cannula should be used for one douche, even when used by the same person.
- **Water purity:** to use with drinkable water. In case you think that tap water is not of good quality, although drinkable, for the douche use filter for Pink Shower with double membrane of 1.2 microns (E - accessory not provided with the package).
- **Water pressure:** Pink Shower is provided with an automatic clutch control system (B – patented system). The water pressure in excess is downloaded in the basin. Therefore, the water leakage from the connector is normal and testifies the proper functioning of the valve. It is possible that

the connector emits a sound like a whistle, while the tap is open: **this is not a product fault, but depends only on the pressure created inside, which means that, even opening the tap, the water jet appears gentle, but effective** (fig. 21). In order to eliminate this sound it is enough to control the water pressure from the tap control.

- The vaginal douching should always be done at a low speed water flow, especially for the first douches and regulating the pressure from the tap control.
- Pink Shower can be used by children only with the pediatrician's approval, and always under the supervision of one parent.
- If you have some problems after the douching, stop using Pink Shower and consult your doctor.

SUGGESTIONS FOR USE

- It is recommended to douche only once a week, unless otherwise directed by your doctor.
- The time of water release in the vaginal duct must be indicatively between 15-20 seconds. A longer use has to be prescribed by your doctor.
- After the douching wait a few seconds, preferably in a standing position, before dressing up, to allow the complete flow out of water.
- After douching with Pink Shower, we recommend the topical application of lactobacilli. In case of recurrent vaginal infections, you should use vaginal tablets/suppositories, as prescribed by your doctor.

MAINTENANCE AND STORAGE

- After douching remove the cannula and rinse the device, unscrew the shower head (F) from the tube to drain the water

in excess and blow on the side of the connector (B) to release residual water in the tube (Fig. 22). At the end screw the handle to the tube to preserve the product.

- It is advisable to keep, use, and among other things, the product thoroughly clean and dry inside the case.
- Do not use detergents to clean the product, to avoid damaging the rubber parts or plastic.
- Before use, check the integrity of the product and its correct installation.
- Before use, connecting to Pink Shower Faucet, always slide water freely into the basin or bidet for about 15-20 seconds to clean the inside of the tube.

SPARE PARTS AND ACCESSORIES

You can buy the complete range of products Pink Shower www.pink-shower.com on the site or in the pharmacy (in countries where distributed).

Cannulas: supplied in packs of 10 pieces. Available in several sizes and softness (see website).

Universal Adapter Quick Addy: it allows the use of Pink Shower without unscrewing the filter from the tap. Its use is ideal for travel, hotel or in the case of valves with non-standard thread.

Multifunction shower fitting: for the connection of Pink Shower to shower hose.

Double membrane filter of 1.2 micron: for water filtration with bacteria and suspended impurities larger than 1.2 microns.

Pink Shower Faucet Metal Filter: available with internal and external standards.

Adapters: For taps with non-standard threads.

Extension: spiral tube from 3 meters to connect even in the case of Pink Shower faucet distance is greater than the length of the tube provided.

For external use only: do not use Pink Shower in any manner other than expressly stated.

The manufacturer, distributors and resellers accept no responsibility for any damage that may directly or indirectly, to persons or property as a result of the failure to compliance with all the requirements outlined in this manual and related assembly, the use, contraindications and maintenance.

For any clarification or information please visit www.pink-shower.com or contact customer care via email at: customer@csp srl.net.