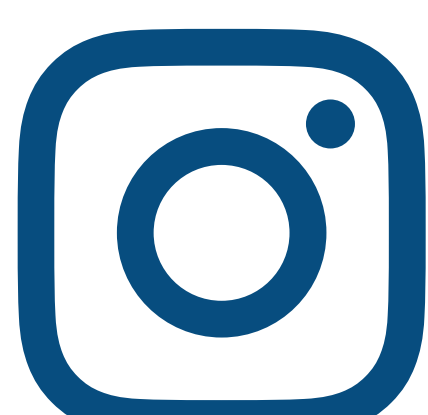


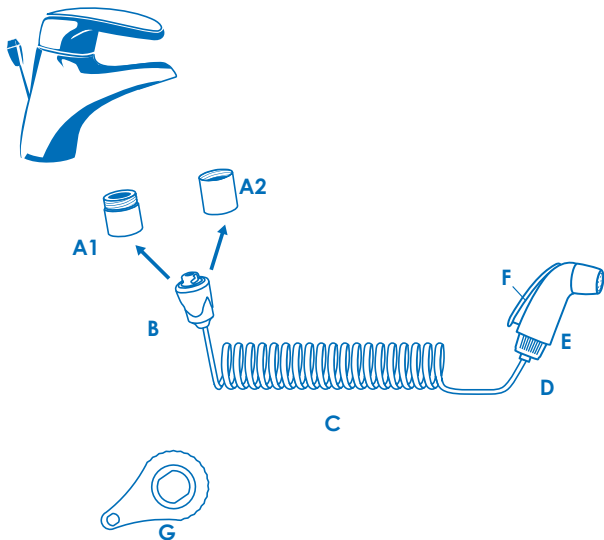


EN User guide

[www.waterpowered.eu](http://www.waterpowered.eu)  
[customer@waterpowered.eu](mailto:customer@waterpowered.eu)  
800577477



General Diagram



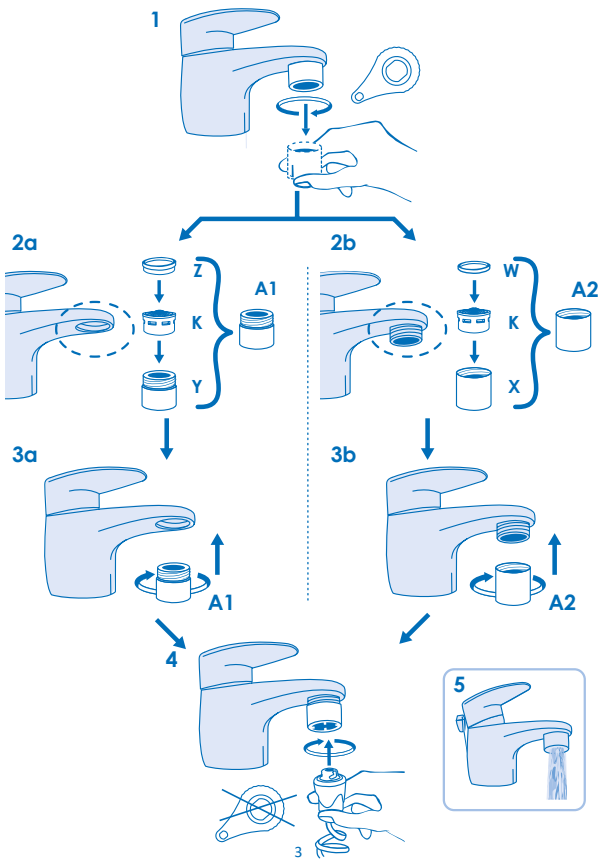
Special Aerator Filter (A1, A2)



Addy (O) - Universal adapter  
(Included only with "Travel" version)

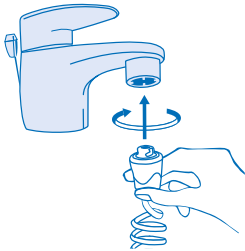


Filter assembly to the faucet

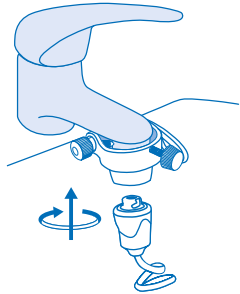


How to use

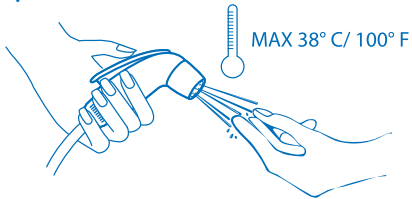
6a



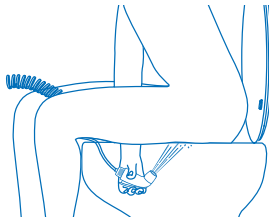
6b Only for "Travel" version



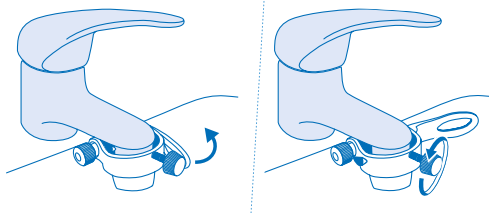
7



8



9 Only for "Travel" version



---

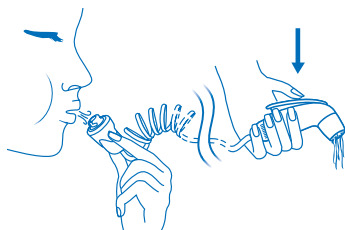
Maintenance

---

10



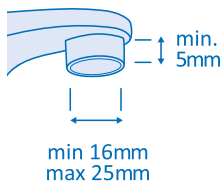
11



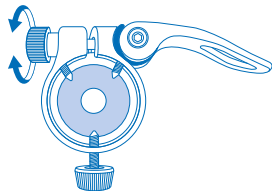
## Addy Installation

(For use of Hello Bidet with Addy, travel adapter.  
To use Hello Bidet at home, see step 1-4).

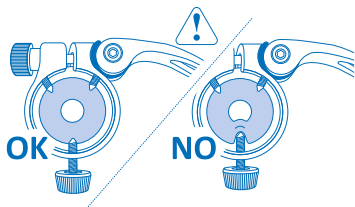
12



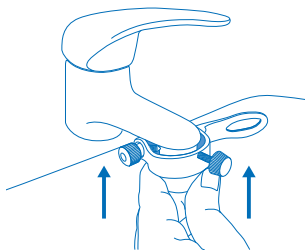
13



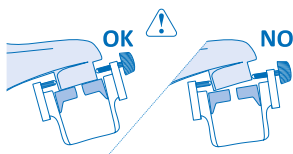
14



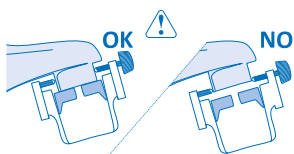
15



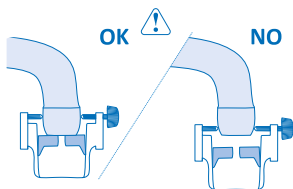
16



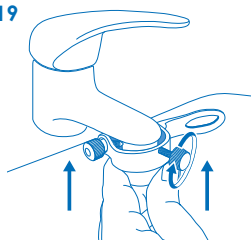
17



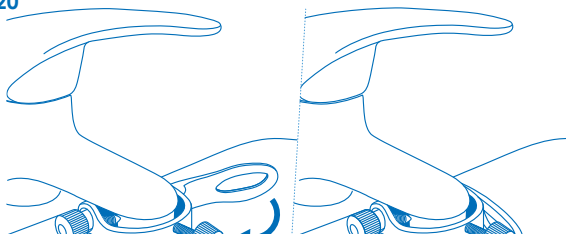
18



19



20



**PACKAGE CONTAINS::**

- **“Special Filter” bag (A1/A2) containing:**
  - Special filter holder with internal thread (X)
  - Special filter holder with external thread (Y)
  - Aerator Filter (K)
  - Seal (W - with rectangular section) for filter holder with internal thread
  - Seal (Z - with “step-like” section) for filter holder with external thread
- **Quick connector (B) with 3-meter spiral tube (C), connector (D), handle/shower (E) with lever (F).**
- **Key for fastening/removing filter holders (G).**
- **Universal Addy adapter (O)\*.**
- **Hello Bidet carrying case.**
- **Multi-language user manual.**

*Letters in parentheses refer to the main diagram.*

*\*Included only with Hello Bidet Travel version.*

**WHAT IS HELLO BIDET**

Hello Bidet is a handshower bidet that can be conveniently and directly attached to your faucet allowing you to enjoy the highest level of personal hygiene while easily regulating water temperature and pressure.

**WHEN CAN IT BE USED?**

Hello Bidet can be used instead of your normal bidet for everyday cleansing and even when traveling.

**SIDE EFFECTS**

Hello Bidet will not cause any particular side effects, but with some cases of skin hypersensitivity brought on by irritation, wounds, bruises, surgery and/or other inflammations, the bidet use should be carried out with caution. With health conditions that require special attention, please consult your physician before using Hello Bidet.

**WARNINGS**

- For external use only: Hello Bidet should not be used differently than expressly indicated in the manual.
- Contains small parts – keep out of the reach of children!
- Before using Hello Bidet, check to make certain the product and all parts are undamaged, and that it is properly assembled;
- Be careful of the water temperature during use: Hello Bidet can be used at any desired water temperature by simply adjusting it directly

from the faucet. We recommend a warm water temperature of 38° C / 100°F.

- Regulate the distance of the bidet handshower from your intimate areas according to your skin sensitivity.

**INSTALLATION****Installation of Special Filter to faucet\*\***

**NOTE:** The installation of the filter holder to the faucet should only be carried out when Hello Bidet is connected. The special Hello Bidet aerator filter should not be removed and reinstalled at every use for it will not affect the normal functions of the faucet (Fig. 5), allowing airing, water savings and filtration. (The special Hello Bidet filter holder is adaptable to all faucets of CEN - EN 226 norm). This standard is commonly abided by all faucets with unscrewable filter holders present on the market).

To connect the Hello Bidet filter (“special filter” bag) to the faucet (sink, bidet, shower hose\*\* or bathtub):

1 - Unscrew the filter holder from the faucet, making certain the seal is also removed (fig. 1). If necessary, use the key (G).

2a - If the faucet has an internal thread (fig. 2a), insert the aerator filter (K) inside the special filter holder with the external thread (Y) and place the seal with the step-like section (Z) on the aerator filter (fig. 2a). Screw the filter holder to the faucet with the just assembled (Fig. 3a) external thread (A1).

3a - If the faucet has an external thread (fig. 2b), insert the seal with the rectangular section (W) and the aerator filter (K) inside the special filter holder with the internal thread (X)(fig. 2b). Screw the filter holder to the faucet with the just assembled (Fig. 3b) internal thread (A2).

4 - Completely screw on the assembled special filter holder to the faucet with the quick connector (B - fig. 4) with dry hands and turning counterclockwise.

**\*\*** To connect Hello Bidet to the shower hose use the multifunction connector (accessory sold separately - see section “Parts and Accessories”).

Hello Bidet can also be connected to the faucet via the quick universal adapter “Addy” (O - included only with the Hello Bidet Travel package and sold separately as an accessory for the Basic version - see section “Parts and Accessories”) without unscrewing the filter holder from the faucet. Perfect for travel.



## HOW TO USE HELLO BIDET

- 1) Using dry hands for a better grip, insert the quick connector (B) to the special filter holder (A1 -A2) or Addy (O) turning counterclockwise (fig. 6a - 6b);
- 2) Turn on the faucet, press the lever (F) and adjust the temperature of the water that comes out of the handshower (E) by checking it with your hand (fig. 7). Regarding water temperature, keep in mind that the skin sensitivity of intimate areas is always higher compared to the sensitivity of hands; Never use with water above 38°C/100°F.
- 3) Sit on the toilet, position the handshower (E) between your legs and press the lever (F) in order to begin the cleansing of your intimate areas (fig. 8); the lever (F) will allow you to interrupt the water flow at any time by simply releasing the lever.
- 4) When you are finished, release the lever (F) and turn off the water from the faucet;
- 5) Unplug the quick connector (B) from the faucet filter by turning clockwise;
- 6) At the end of each cleansing, after having rinsed out the bidet handshower (fig. 10), blow air into the attachment connector part (B) in order to get rid of any remaining water left in the tube (fig. 11) and by simultaneously pressing the control (F) of the bidet handshower (E).

## FREQUENCY AND DURATION OF CLEANSINGS

- The cleansing of your intimate areas with Hello Bidet can be performed as often as you like, even several times a day;
- The total duration of a cleansing is absolutely up to your personal desires.

## MAINTENANCE AND STORAGE

- Before use, connect Hello Bidet to the faucet and let the water run for about 20-30 seconds until it exits the handshower;
- Between uses, we recommend keeping the product thoroughly clean, dry and stored inside its carrying case;
- When cleaning the product, do not use harsh detergents so as to avoid damaging the rubber or plastic parts.

## UNIVERSAL ADAPTER ADDY

Included only with Hello Bidet "Travel" version. It can be purchased separately as an accessory for the Hello Bidet "Basic" version.

Thanks to the Addy adapter, you can connect Hello Bidet to the faucet in a simple and fast manner, without the need to mount the special filter holder. Addy is ideal for use on the road, in a hotel or in case of faucets with non-standard threads.

Addy can be connected to all faucets with circular filter holder for water outlet with an outer diameter from 16mm to 25mm and with a minimum height of 5mm (fig.12).

## WARNINGS AND RECOMMENDATIONS FOR THE USE OF ADDY

- Gradually open the tap, not suddenly and not the maximum water pressure;
- While the tap is open, do not try to reposition or move Addy to avoid leaks;
- Initially, there may be some small leakage of water from top of Addy for a few seconds, that are going to disappear quickly. If the leakage were to be prolonged or if it is excessive, you should repeat the installation procedure of Addy to the faucet;
- Make sure the filter holder is securely tighten to the faucet to prevent leakage when the adapter is mounted;
- The use of Addy in case of excessive pressure while mounting, and repeated use on the same tap, may cause light marks on the filter holder of the faucet due to contact with the screws (for extended use of Hello Bidet on the same faucet, we recommend using the threaded special filters);
- It is not recommended to leave Addy mounted to the faucet; if this happens, before each use check that the hold is solid, making sure that the screw (P1) is tightened;
- When tightening the screw (P1) be careful not to deform the ring (Fig. 14);
- Should Addy come off the faucet, repeat the procedure of assembly Addy to the faucet, tightening the screw P1 and the adjustment wheel P2;
- Do not disassemble the components of Addy;
- Contains small parts - keep away from children.

## ADDY - ASSEMBLY TO THE FAUCET

1. Place the lever in the open position (Fig. 13) and tighten the adjustment wheel (P2) until the lever is pulled, but without using excessive force;
2. Check that the tightening screw is sufficiently loosened to allow the insertion of Addy on the

faucet's filter holder and that the seal is properly inserted in its housing with no visible deformation (Fig. 14);

3. Hold Addy (Fig. 15) pushing up against the faucet until the seal fully adheres to the filter holder on the faucet, making sure that:

- The tightening screw (P1) is on the front or side of the faucet (never in the back);
- Addy follows the inclination of the filter holder, to allow the seal to adhere completely and ensure a tight hold (Fig. 16);
- Addy is placed as high as possible with respect to the filter holder of the faucet (Fig. 17).

**Particular cases:**

- Some filter holders have a slight indentation: make sure that the tip of the screws do not lean in the vicinity of the recess to prevent Addy from coming off.
  - In the case of taps that are slightly flared or rounded (e.g. some types of kitchen taps), mount the screws on the straight part of the filter holder, never on the flared part to avoid Addy from coming off the tap (Fig. 18).
4. While holding Addy against the tap, tighten the ing screw (P1) until it is attached to the tap (Fig. 19), without pressing it too much;
  5. Turn the lever bringing it to the closed position (Fig. 20);

**Now you can connect your Hello Bidet (fig. 6b);**

6. When you are done, and after disconnecting the device, put the lever in the open position (Fig. 9) and, if necessary, loosen the ing screw;
7. After using Addy, allow it to dry and leave the screw (P1) slightly tightened checking, however, that the tip of the screws are above and don't deform the seal (Fig. 14).

## SPARE PARTS AND ACCESSORIES

You can purchase the complete line of Hello Bidet products on the site [www.hellobidet.com](http://www.hellobidet.com) or in a pharmacy.

**Handle/handshower:** to allow multiple family members to use the same Hello Bidet product by simply replacing the shower handle.

**"Duck" accessory set:** extension that will allow you to perform a deeper cleansing, with a water jet that reaches closer to intimate parts.

**Universal adapter Addy:** allows the use of Hello Bidet

without removing the filter holder from the faucet. Perfect for travel, hotels or with faucets with non-standard threads.

**Multifunction shower connector:** for connecting Hello Bidet to showers.

**Extension:** spiral hose for extending Hello Bidet; for faucets that are more than 3 meters away.

**Hello Bidet filter holder in metal:** available with standard internal and external threads.

**Adapters:** for faucets with non-standard threads.

The manufacturer, distributors and resellers will not accept any responsibility for any damages that may directly or indirectly be caused to persons or property as a result of the failure to observe all the requirements indicated in the present user manual as well as the assembly, use, side effects, warnings, and maintenance of the product.

For any clarification or information please visit:

[www.hellobidet.com](http://www.hellobidet.com) or contact customer care by email at: [customer@waterpowered.eu](mailto:customer@waterpowered.eu)