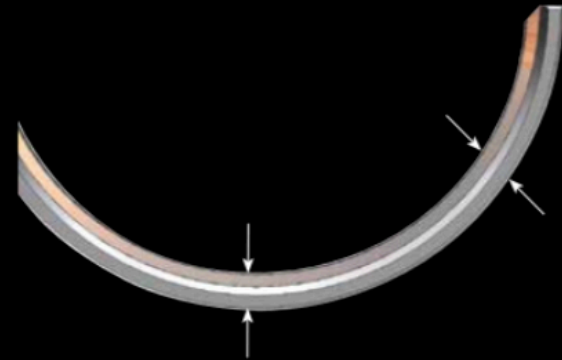


FEATURES OF ACL RACE SERIES PERFORMANCE ENGINE BEARINGS

Precision Manufacturing

ACL Race Series performance engine bearings are manufactured to exacting tolerances. Micron tolerance machining supported by precision measurement systems delivers consistent accuracy to key characteristics like wall thickness and crush. This ensures reliable fit and helps maintain consistent clearances.



Bearing Material Enhancements

A blend of characteristics to provide high strength and crankshafts. excellent seizure resistance.

No flash plating is applied to further improve bearing retention and maximise heat transfer.

ACL Race Series performance engine bearings are identified from the standard range by the following suffixes:

H = ACL Race Series

HX = ACL Race Series with 0.025mm (0.001") extra clearance

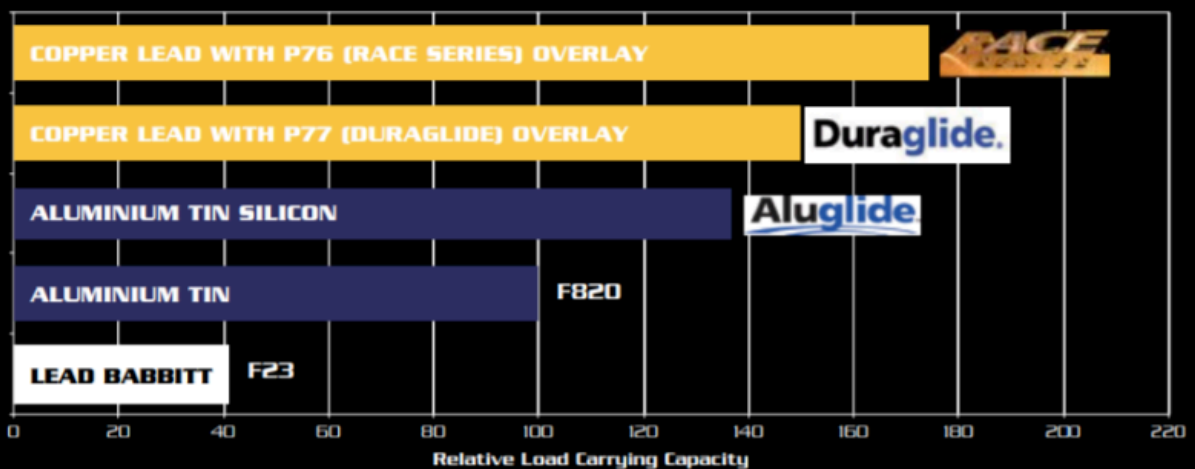
HD = ACL Race Series with location dowel holes.*

HXD = ACL Race Series with 0.025mm (0.001") extra clearance and location dowel holes.*

*Connecting rod bearing applications only

LAYER	ALLOY
Overlay	Lead-Tin-Copper
THICKNESS (Typical) 0.013mm * 0.018mm	
*Connecting Rod Bearings Only - Reduced for increased fatigue resistance	
Seizure resistant - Low friction and deformable	
Barrier	Nickel
THICKNESS (Typical) 0.0001mm	
Separation Layer	
Lining	Copper-Lead-Tin
THICKNESS (Typical) 0.3mm	
Fatigue Strength - Strong yet deformable	
Steel	SAE1010 (High tensile)
THICKNESS (Typical) Rem	
High Strength - supports bearing lining	

Comparison of ACL Materials



If you are in any doubt, please speak to your local specialist or contact us direct for technical assistance. Phone +44(0)1455 618464 or email sales@med-engineering.co.uk