



*Painted
Kitchen*

**WASHER DRYER
CONSTRUCTION**

APPENDIX

1—Introduction and opening the box

2—Familiarisation with the parts

3—Carcase Construction

4—Carcase Construction

5—Attaching the frame

6—Magnets and Stoppers

Congratulations on your purchase of our Cabinetry.

We have strived to make this from the very best materials we can whilst keeping the cost as low as possible.

We are really pleased with the end result and hope that you will be too.

This booklet goes over the general construction of a carcass and attaching the frame, further instruction manuals are available for Drawer construction and fitting, and attaching hinges.

Step 1

Open the box—we find it easiest to turn the box upside down (So the top is on the floor) and then cut the Sellotape around, this will allow you to remove the entire bottom of the box. We have not used Sellotape on this part of the box to try and reduce plastics used in the packing process and to also aid recycling which we would actively encourage.

You can then see what is inside, we have used a soft foam wrapped carefully around every part.

Slowly lift this and begin to remove each part and place on the floor around you.

You will also find a box of fittings, which will include, Dowels, Screws, Magnetic catch.

Step 2

Separate out the parts and familiarise yourself with the components.

The cabinet will be made up of:-

*2 x Sides —Will have one lacquered side with front Lip on the Non lacquered edge

*Top—Will have one lacquered side with front lip on Lacquered edge—See picture



*3 x fixed Shelves - Lacquered both sides—Lip on front edge

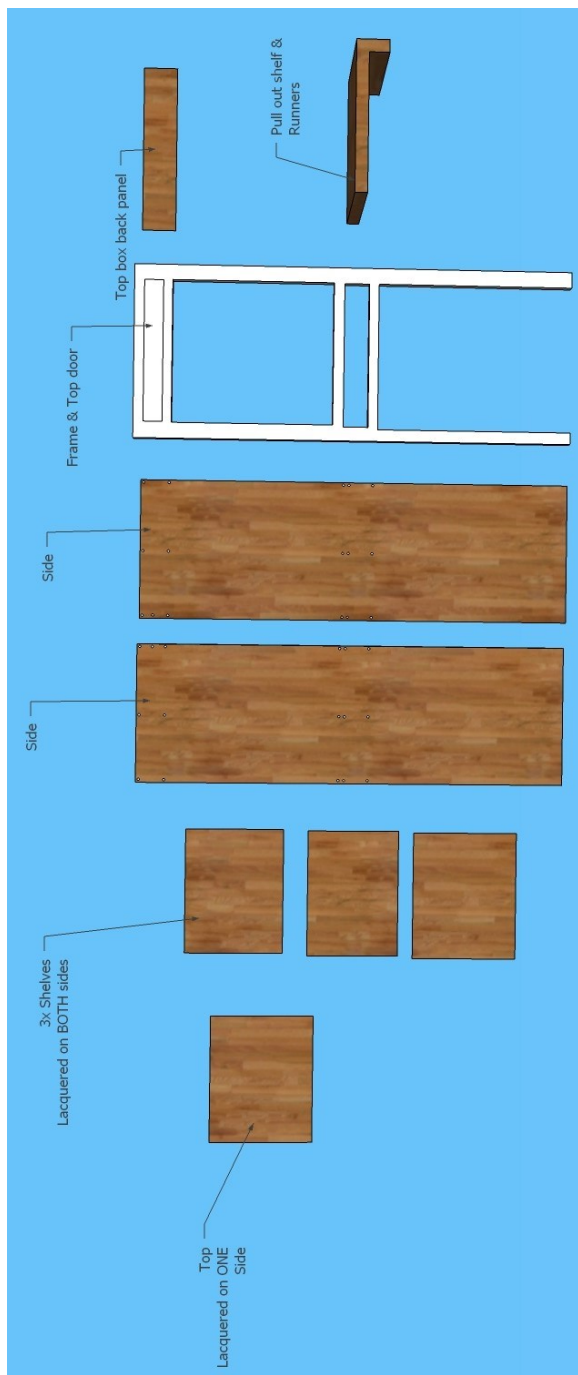
*Pull out shelf & runners

*Back panel for top box

*Front Frame

*Top box Door

Parts for the Washer Dryer cabinet



Step 3

Next Find the Side and top panel—this is one of 4 the same size - but will be the ONLY one not lacquered on both sides .

Unlacquered side goes up.

Place the dowels in place with Lip on shelf pointing to the front - & secure in place with pre marked screw holes.

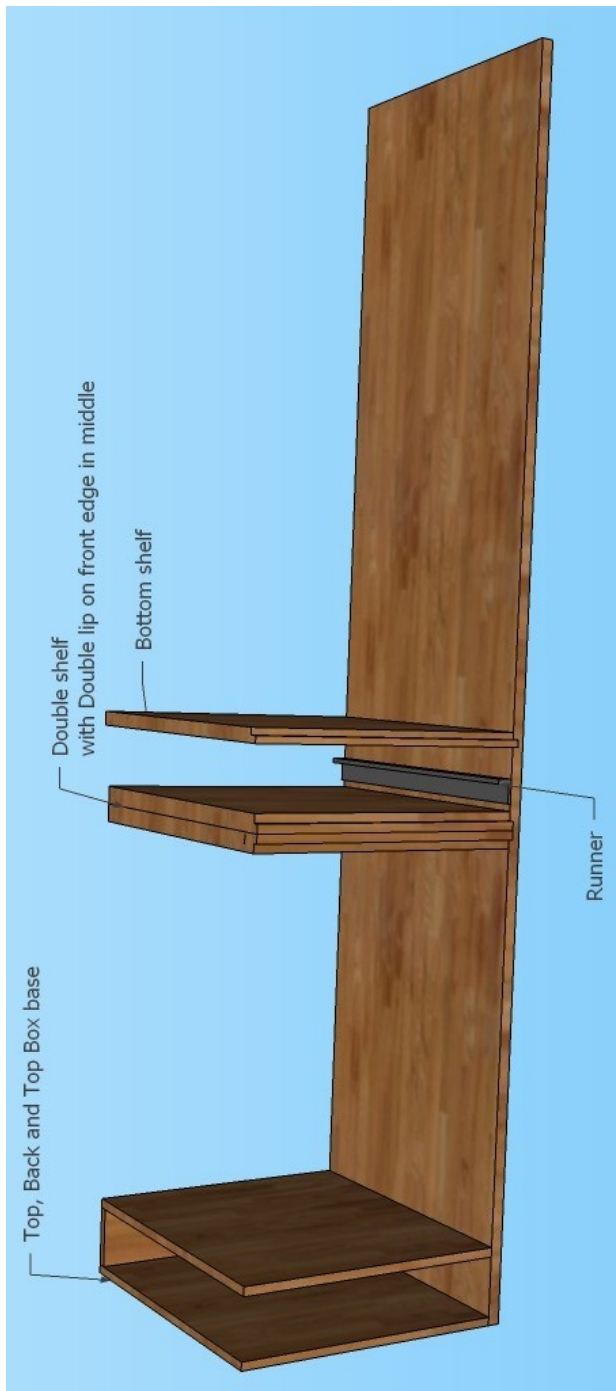
Follow this around with the back and the base of the top box.

Next is the double shelf - we have made this double thickness as it will have a tumble dryer sitting it in spinning very quickly—this will help add rigidity and strength.

The shelves will be placed so the 2 lips are together in the middle and secured to the side panel.

Do the same again for the shelf below.

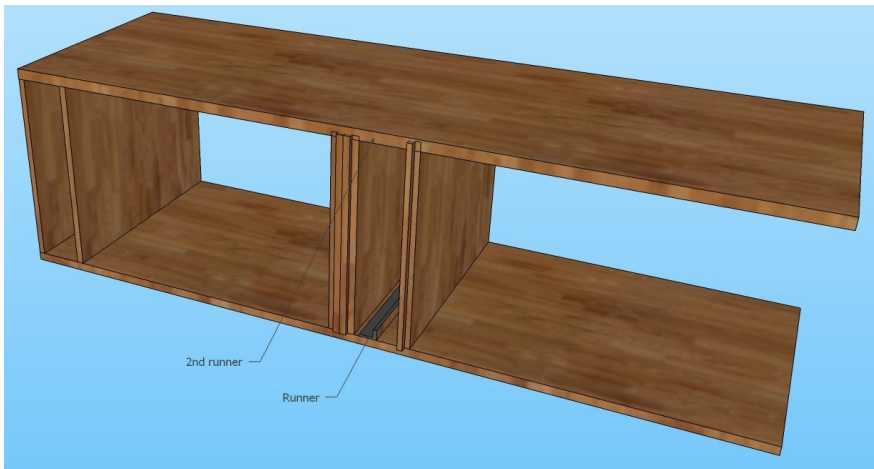
It may be worth fitting the drawer runner now as this is a small space and squeezing in later may be difficult.



Step 4

The next step is to fit the other side.

Put in the dowels and line up the other side and then secure with screws.

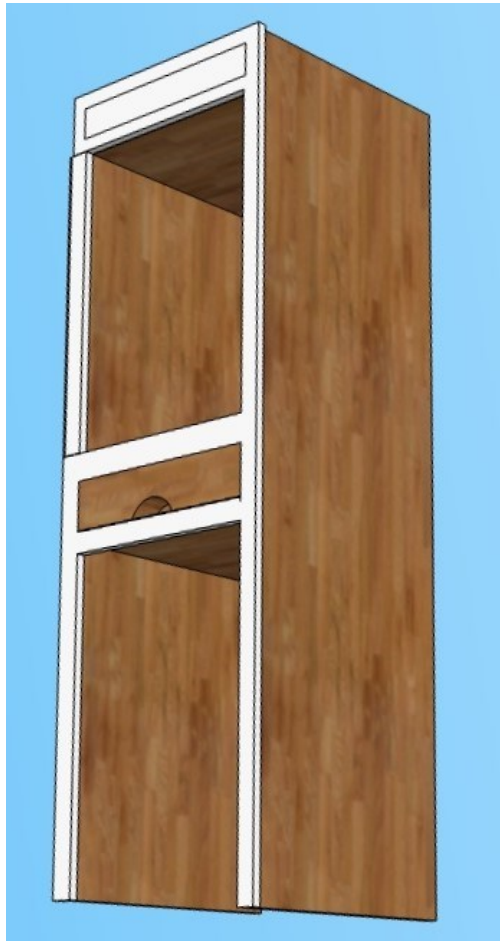


Step 5

The next step is the frame

Turn the cabinet on its back and place the frame on top—the lips on the carcass should line up with the grooves on the frame and click in place—depending on how tightly its been screwed together you may have to wiggle and push it into place.

Then secure with screws through the pocket holes already drilled



Step 6

Slide the pull out shelf in and adjust with the adjustment below the shelf on the runners.

Step 7

Attach the hinges and attach the door and magnet.





2024

The Painted Kitchen Company