



*Painted
Kitchen*

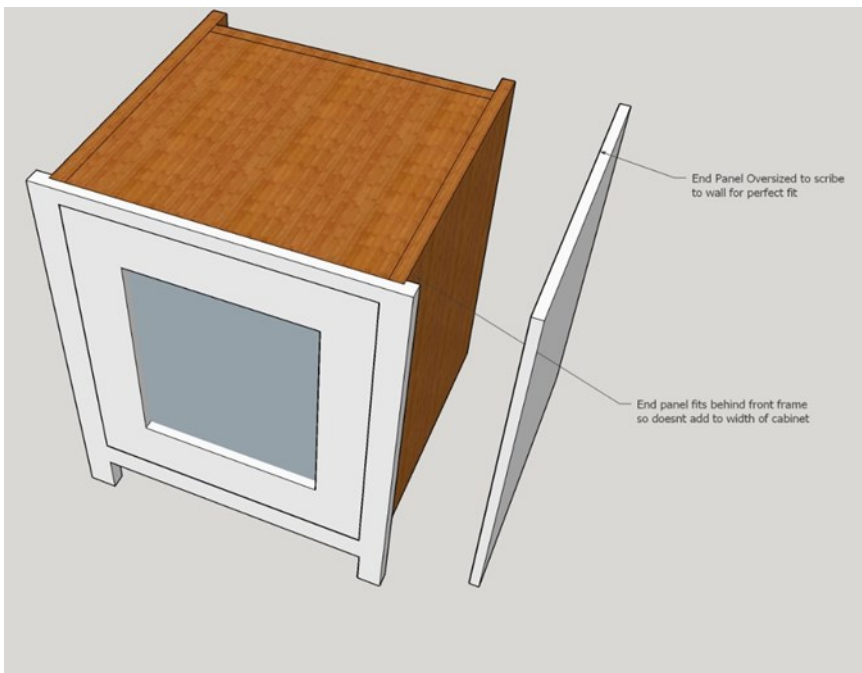
END PANEL
EXPLANATION

All of our cabinets are In-Frame – the frames are 40mm thick and the carcasses are Plywood which is 18mm thick – this leaves a rebate behind the frame of 22mm

This creates a perfect space to attach a panel where a side of a cabinet is visible.

We would always over size the panel so that if the walls or floors are slightly uneven the panel can be scribed into the wall or floor to create a perfect fit.

Below is a sketch of how the panels work



Types of panel

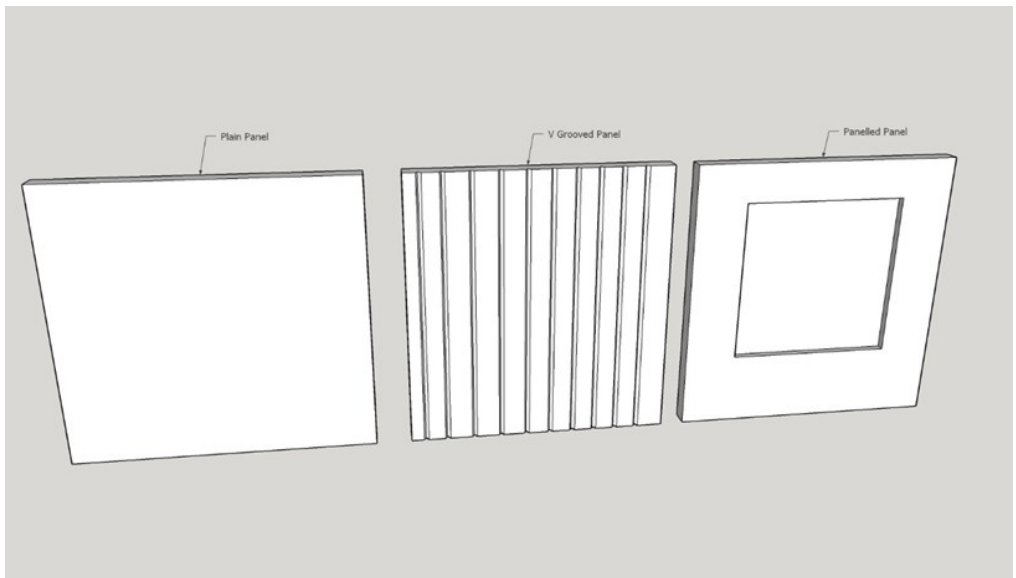
We have three main types of panel.

PLAIN

V GROOVED

PANELLED

Pictures below of each



Plain and V Grooved will be oversized as its easy to scribe into walls or floors that are uneven

The panelled is a little different—on single panels we over size the width of the left and right hand rail allowing you to scribe and still keep symmetry

2024

The Painted Kitchen Company