

Suggested Installation for Mantel Shelves using the included Hanger Board system

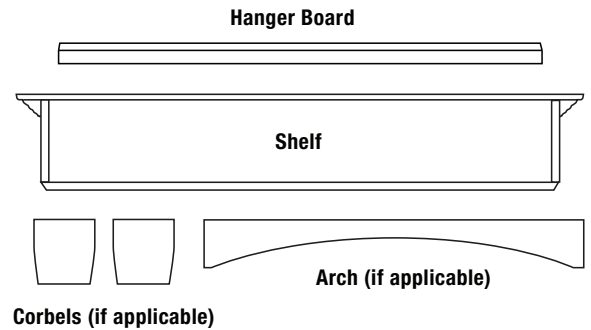
The hanger board is only a suggested method; your installer may have additional methods for mounting your mantel shelf. Always consult a professional.

THANK YOU FOR PURCHASING A PEARL MANTELS SHELF!

Look for the Pearl Inlay on the right-hand corner of your new mantel shelf.
This is your guarantee of an authentic Pearl Mantels™ product!

Included in your carton: Mantel Shelf, Detached Mitered Hanger Board (Hardware to install detached hanger board not included), Instruction Sheet, Certificate of Authenticity and (If Applicable): Corbels with hardware for attaching to the bottom of the shelf and (If Applicable): Arch with hardware for attaching between the corbels and to the bottom of the shelf. (If Applicable): Included hardware pack will be wrapped in red tape.

Not included: Mounting hardware for detached hanger board. There are many different mounting surfaces, i.e. brick, stone, drywall... and each requires a different hardware for secure attachment. **Always consult a professional.**



Wood and MDF (Medium Density Fiberboard) are combustible materials. Heat clearances must be adhered to. Before installing, adhere to your local building codes and manufacturer's requirements for your specific firebox or stove.

Assembly: If your shelf does not include corbels or an arch, no assembly is required. If your shelf does include corbels or corbels and arch, please refer to the additional instruction sheet included in your carton for assembly instructions.

Do not proceed without full understanding of the firebox's wood clearance requirements and local building codes. Wood and MDF are combustible and required clearances must be adhered to or damage will occur to your mantel.

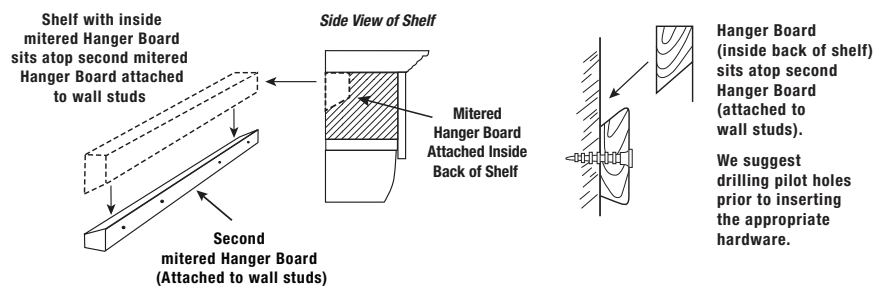
Measuring/Mounting

Always check Building Codes and Heat Clearances; Wood and MDF are Combustible. Always attach hanger board to studs. Always consult a professional.

The Hanger Board system consists of 2 mitered hanger boards, one is attached to the back of the mantel shelf and the other is packed separately in the carton and will attach to your mounting surface. When married together, the mantel shelf will be locked in place on the wall.

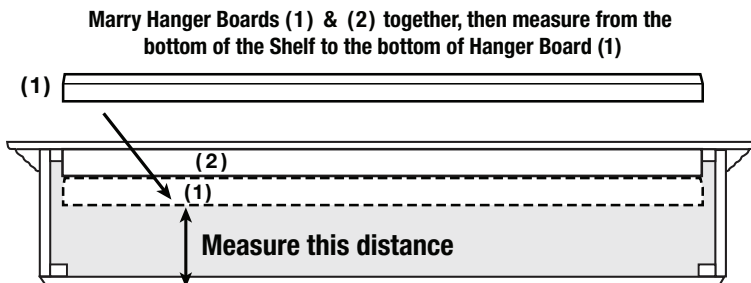
* Mounting hardware for detached hanger board is **NOT INCLUDED**.

We suggest that pilot holes be drilled into the hanger board prior to inserting the appropriate hardware for final installation on the wall. **Always attach to studs.**



Measuring: Measure from bottom of the shelf to the bottom of the hanger board (1) (See Figure A. below). This measurement is where the bottom of the shelf will be when mounted on the hanger board and this distance must be in compliance with heat clearance requirements of the firebox and building codes.

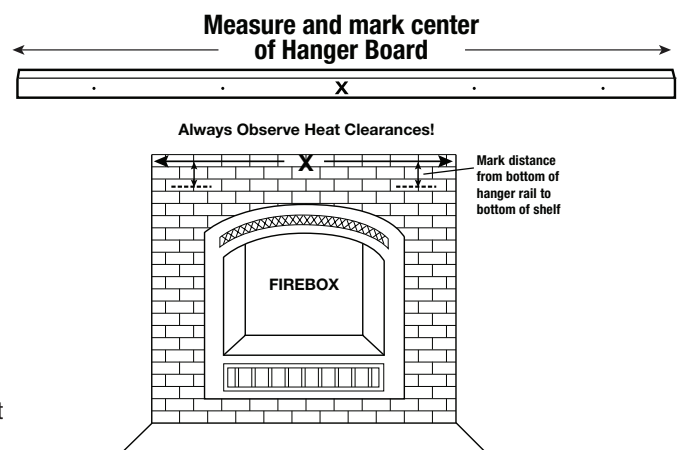
Figure A.



Measure from the floor or the hearth to where the bottom edge of the hanger board will be, remembering to add the distance to the bottom of the shelf (see Fig. A), and mark your recorded measurements on the wall both right and left. Center your hanger board (see Figure B), ensure your pilot holes align to studs and mount the hanger board so that the bottom of the board is on your recorded marks. Hang your shelf. Some surfaces may not be flush which may require shims or filling of gaps. **Always consult a professional.**

Centering: Find center point over firebox by measuring from one side to the other, mark the center point on mounting surface, do the same for the hanger board. (See Figure B. below)

Figure B.



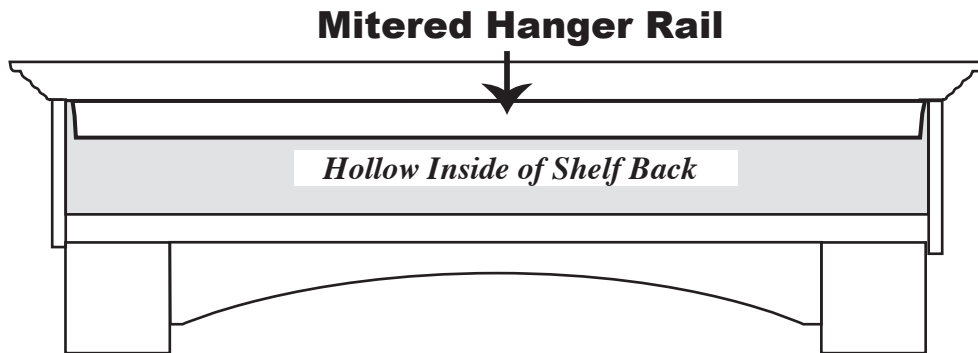
Unfinished Wood Mantel Shelf: Always consult a professional before applying paint or stain.

Pearl Inlay: If you have purchased an unfinished piece, your Pearl Inlay is masked with red tape so that you may paint or stain over it. After you have completed the paint/stain process, remove the mask.

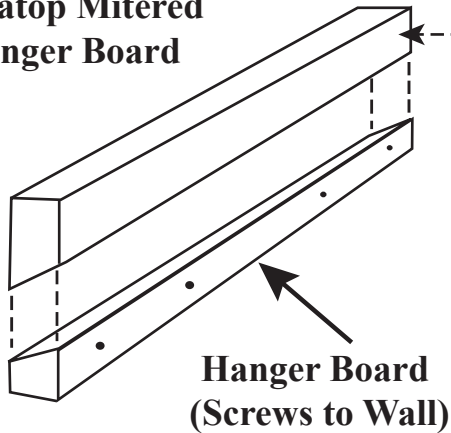
Always consult a professional.

Easy to Hang

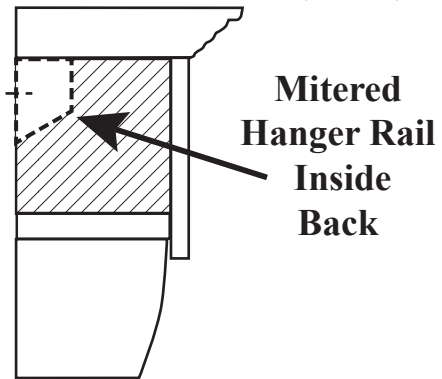
*Back View of Shelf
(Same Application for Mantel)*



**Shelf with
Mitered Hanger Rail
Sits atop Mitered
Hanger Board**



Side View of Shelf

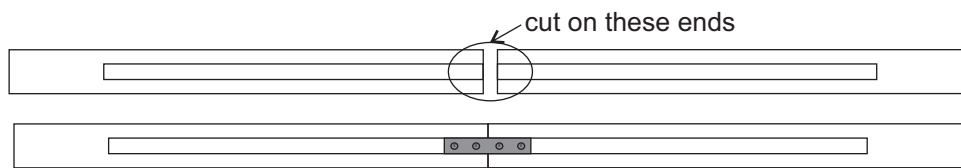


Mounting hardware for hanger rail and scribe moldings not included.

Wood and MDF mantels are considered combustible materials. Heat clearances must be adhered to. Before installing, check your local building codes and the manufacturer's instructions for your specific fireplace insert or stove.

Adjustable Shelf Assembly Instruction:

1. Hardware lists:
 - *Adjustable 2 piece hanger board
 - *1pc Metal plate and 4pcs Phillips head screws = 1 set
 - for use in connecting the adjustable hanger board
2. Determine your desired shelf length by measuring your mounting space then proceed to #3.
3. Your 2 piece hanger board is designed to be completely adjustable to accommodate the shelf length determined on #2. Cut hanger boards on the routed ends and in equal lengths to meet your desired total length. Connect the pieces using the metal plate and 4 Philips screws.



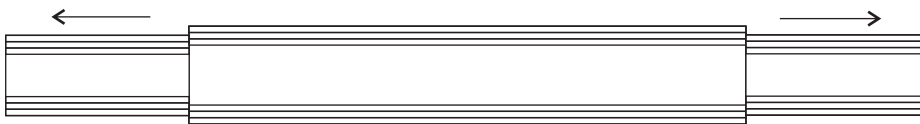
Installation using the Hanger Board

For hanging your shelf, we suggest that you use the hanger board included in this box. The type of hardware (not included) you will use for mounting your hanger board will depend upon the medium your shelf will be attached to (i.e. brick, stone, drywall...). Please consult a professional for advice on the proper hardware.

Measuring

The hanger board measurement should be taken from the floor or the hearth to the bottom edge of the hanger board. Mark your recorded measurement on your wall, both left and right. Take the wall hanger board and mount it on the wall so that the bottom edge of the board is on your recorded marks. Check to see that your hanger board is centered over your firebox before mounting.

4. Hang the mantel assembly and adjust left and right shelf arm to fit your hanger board.



The hanger board is only a suggested method. Your installer may also have additional methods for mounting your mantel or shelf. We suggest that pilot holes be drilled prior to inserting the appropriate hardware for final installation on the wall surface.

Mounting hardware for hanger board and scribe moldings not included

Wood and MDF mantels are considered combustible materials. Heat clearances must be adhered to. Before installing, check your local building codes and the manufacturer's instructions for your specific fireplace insert or stove.