

# MODERN

EFFORTLESS  
GLOW



FOR YOUR  
HOME

# BLAZE

## Mantel Installation



Determine the desired location of the mantel shelf on the wall. Make sure to follow all building codes and fireplace specifications



We use a 2 x 4 wall cleat to attach the shelf. This is an example before it is attached



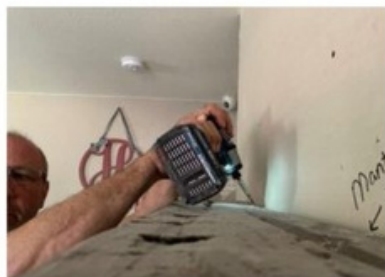
Attach the cleat to the wall using mechanical fasteners and a type of adhesive. In this example the fireplace specifications and building codes allow for a wood 2 x 4 cleat to be used.



Drill at least 5 holes equally through the top of the mantel at least 1" away from the edge. We recommend starting with a 3/16" masonry bit. Drill all the way through the material.



Then using a masonry bit that is large enough to counter sink the head of the screw so it is below the surface so you will be able to patch over the screw and not see it.



Set the mantel shelf onto the wall cleat and use the screws and screw through the holes into the nailing cleat. Use a matching color patch or grout to fill the holes. Usually the mantel is high enough that no one will see the holes. We recommend not making the holes disappear in case you need to remove the mantel for whatever reason.