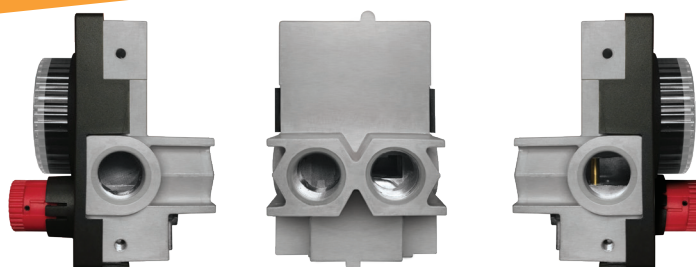




E-STOP GAS TIMER

Combination gas timer & emergency stop



PATENT PENDING 

FEATURES

Unique all mechanical gas shut-off timer with built-in emergency stop - no power required

High BTU capacity

Safest gas timer available in the industry

Available in 2.5 and 1 hour models

Innovative multi-port design provides installation flexibility
1/2" NPT inlets and outlets (side and back)

Six (6) mounting holes (2 front & 4 side) for secure installation

Natural gas (NG) or Liquid Propane (LP) - no conversion necessary

SPECIFICATIONS

TYPICAL MAXIMUM CAPACITY

Natural Gas: 290,000 BTU/hr

Liquid Propane Gas: 430,000 BTU/hr

CSA RATED CAPACITY AT 1-INCH-H2O PRESSURE DROP

165,000 BTU/hr

TYPICAL MAXIMUM CAPACITY IS BASED ON:

Nominal pressure supplied to inlet of E-Stop Timer while appliances are in-operation

NG: 7.0-Inches-H2O

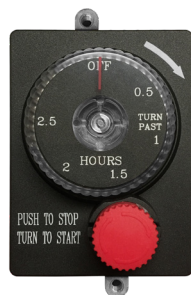
LP: 11.0-Inches-H2O

Minimum rated appliance inlet pressure

NG: 3.5-Inches-H2O

LP: 8.0-Inches-H2O

MODELS



ESTOP2-5H

Mechanical timer with manual emergency shut-off. 2.5 hour countdown timer.



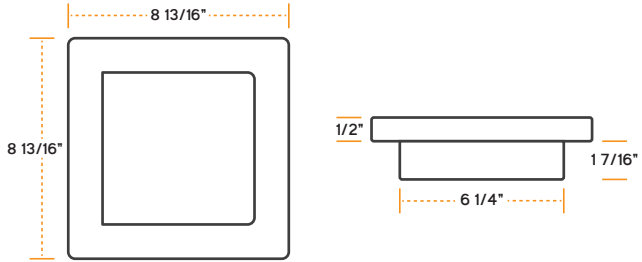
ESTOP1-0H

Mechanical timer with manual emergency shut-off. 1 hour countdown timer.

ENCLOSURES E-STOP SOLD SEPARATELY

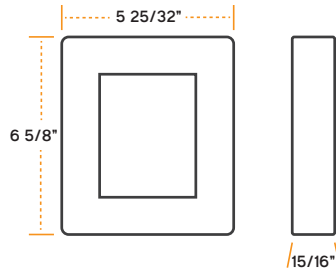
ESTOP-LC-KIT

Locking cabinet.
Constructed of 304
stainless steel. Removable
lock.



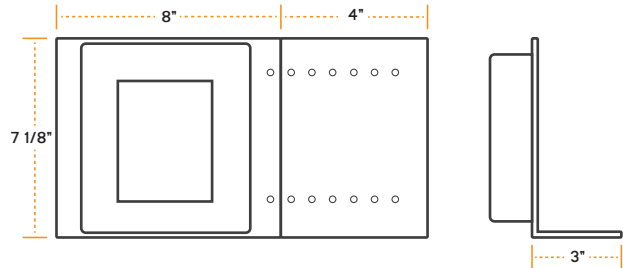
ESTOP-RM-KIT

Surface mount for the
E-Stop. Constructed of
304 stainless steel.



ESTOP-CP-KIT

Designed for use with
architectural block
& pavers. Expands
from 8" to 12" wide to
accommodate various
block sizes.



MOUNTING DIAGRAM

