



## Shelves: Fillmore, Ozark, Crosby, and Baxter Assembly / Installation Guide



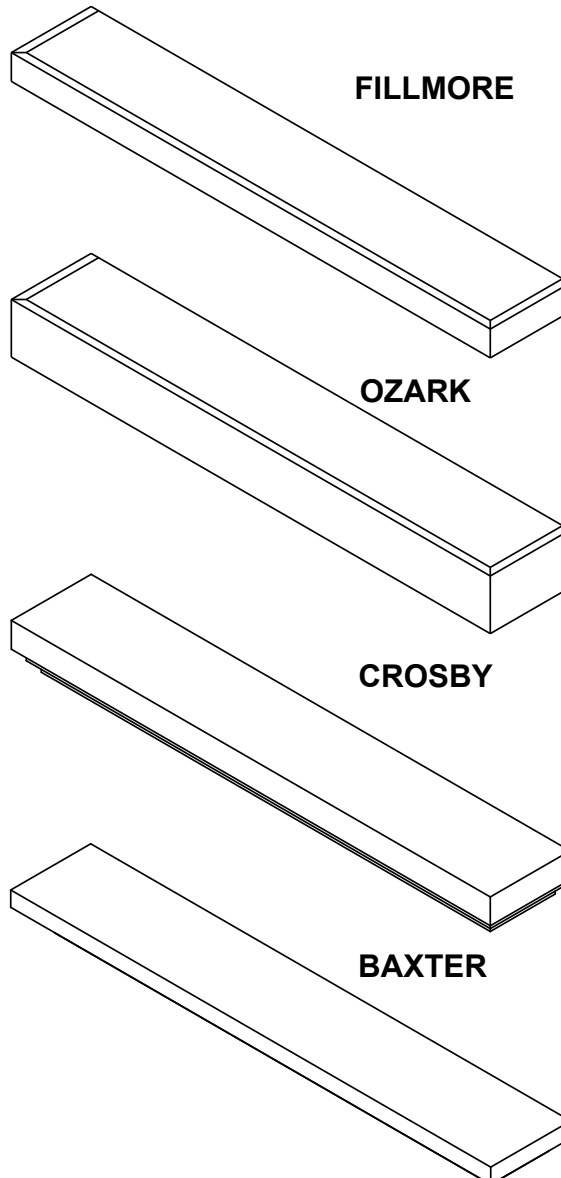
Leave this manual with party responsible for use and operation.

### **WARNING! Risk of Fire!**

**Improper installation or adjustment can cause injury or property damage.** For assistance or additional information, contact a qualified installer, service agency or the gas supplier.

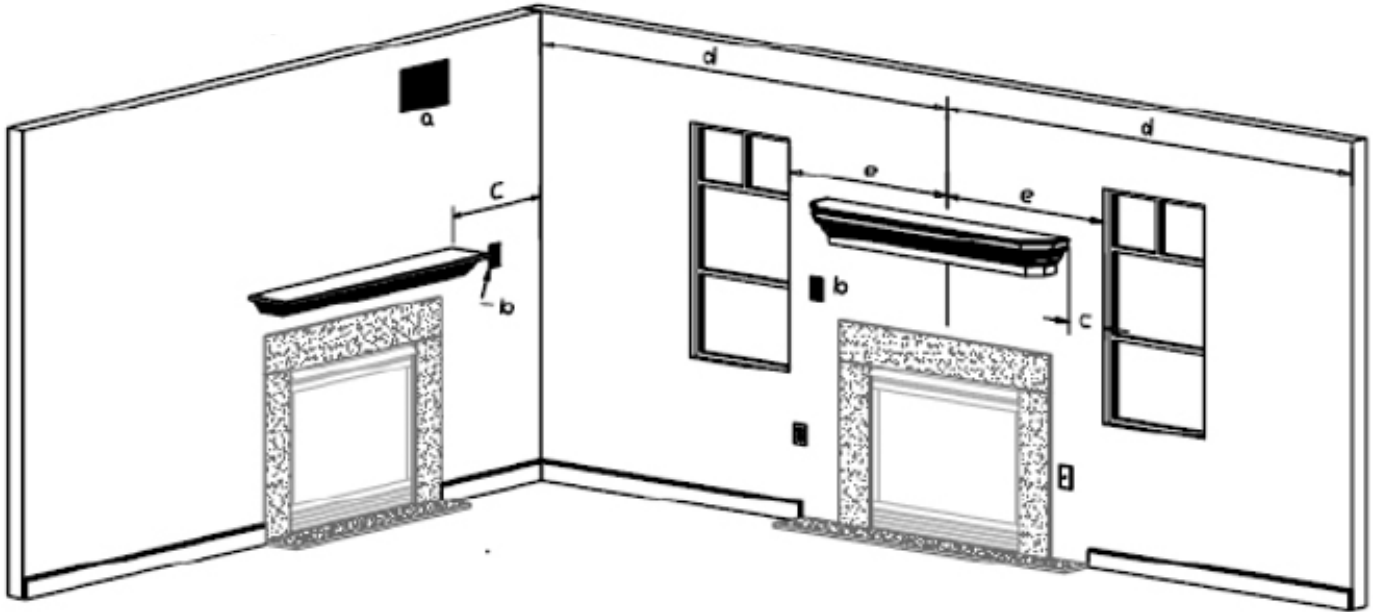
**CAUTION! Risk of Cuts, Abrasions!** Wear protective gloves and safety glasses during installation. Shelf edges are sharp.

**CAUTION! These instructions apply only to the shelf of the fireplace.** See the fireplace manufacturer's installation instructions to ensure that all the required clearance and installation requirements are being met.





The walls and floor in the area of the installation should be clean, plumb and level. Any major deviation should be remedied before installing the fireplace, marble or shelf.



Shown above: Things to consider that may prevent an installation of wood products above the firebox. Specifically:

- a. Return air vent location?
- b. Where are the electrical outlets or firebox switch?
- c. Is there enough distance between window and edge of the shelf?
- d. Is the fireplace centered between walls?
- e. Is the fireplace centered between windows?
- f. Confirm clearances to combustibles per the manufacturer's instructions are maintained.

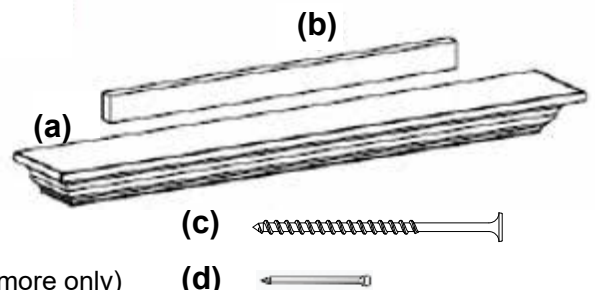
## Parts List and Diagram

### Tools and supplies needed:

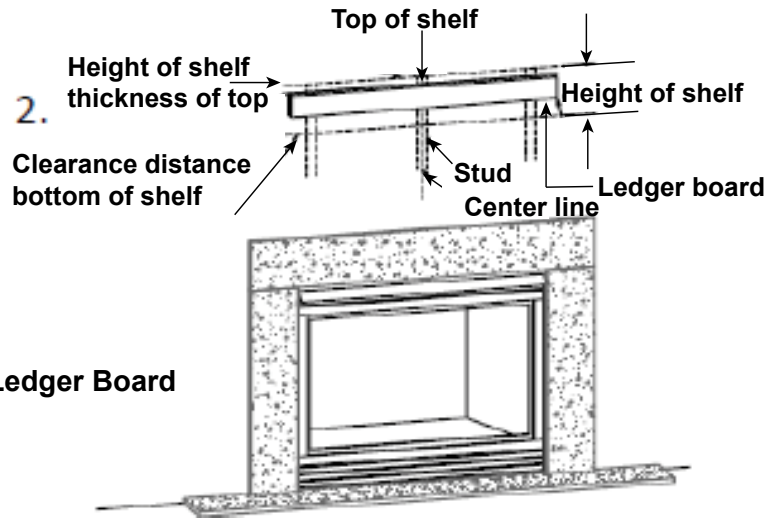
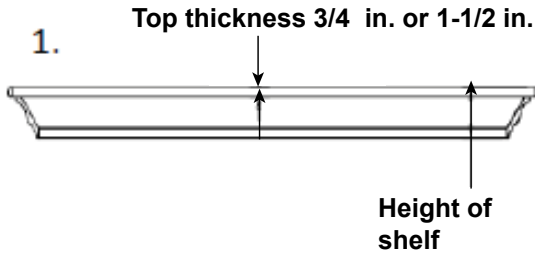
- #2 Phillips Screwdriver
- Carpenter's Level
- Tape Measure, Pencil
- Portable Drill
- 1/16 in. Drill Bit
- Hammer
- Stud Finder
- Nail Set
- Caulk
- #8 or #10 Countersink Drill Bit

### Mantel Parts:

- (a) Shelf Assembly (1)
- (b) Ledger Board (1)
- (c) 3 in. Phillips Head Screws (3)
- 4 in. Phillips Head Screws (Fillmore only)
- (d) 4D Finishing Nails  
Quantity 3 or 4 depending on shelf length  
(Not required for Fillmore. Use 2 inch brad nails.)



## Assembly Steps

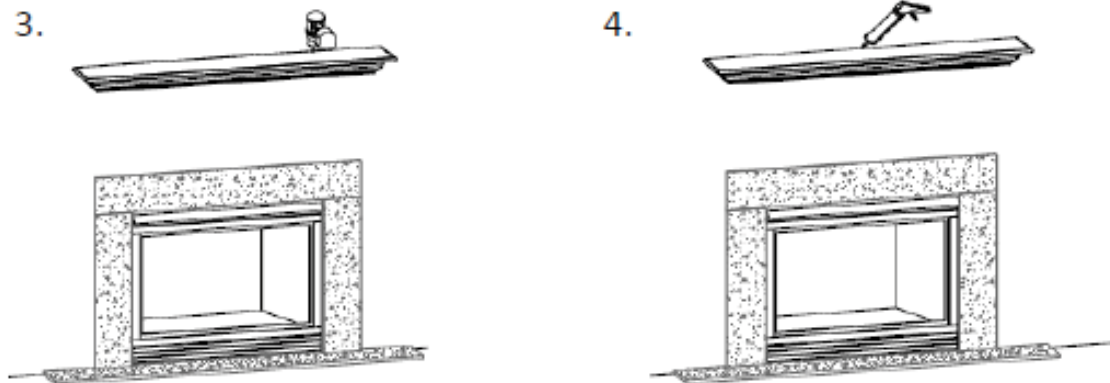


$$\text{Shelf Height} - \text{Top Thickness} = \text{Top Height of Ledger Board}$$

Step 1. Review mantel clearances found in the installation instructions included with the fireplace to determine the required distance from the top of the fireplace to the bottom of the shelf. Add the shelf height to the distance and mark on the wall with the pencil. Measure down the thickness of the shelf top and draw a level line approximately three (3) to four (4) feet long, depending on the shelf length.

Step 2. Using a stud finder or other method, mark the location of the vertical studs. From the center of the fireplace, mark the center point in which the (b) ledger board needs to be mounted. Attach the (b) ledger board using the (c) three inch minimum Phillips Head screws into pre-marked stud locations.

**Fillmore Shelf Only:** The ledger board is mounted to the wall on the 7/8 inch surface. Pre-drill holes through the ledger board to prevent splitting. Use four inch screws for mounting into the pre-marked stud locations.



Step 3. Center and place shelf on the wall with the top resting on the ledger board. Using a portable drill, pre-drill three (3) or four (4) 1/16 inch holes down through the shelf top into the ledger board. The holes should be drilled 3/4 to 1 inch forward of the back edge of the shelf top equally spaced. Attach the shelf to the ledger board using three (3) or four (4) 4D finishing nails (d) through the pre-drilled holes. Use a nail set to set the nail below the surface of the mantel and fill the resulting holes with appropriate filler. Two inch brads 6-8 inches apart may be substituted for the finishing nails.

**Fillmore Shelf Only:** Use a minimum of six (6) two inch brads.

Step 4. Caulk the shelf to the wall all the way around the shelf using a caulk that matches your shelf color as required to eliminate any remaining gap between the mantel and the wall.

**Your installation is now complete.**



# FIRESIDE FINISHINGS

Fireside Finishings, a brand of Hearth & Home Technologies  
[www.fireplaces.com](http://www.fireplaces.com)

Please contact your Heat & Glo dealer with any questions or concerns.

**- NOTES -**

---

---

---

---

---

---

---

---

---

---

---