

FLEX 18BY

BAY FIREPLACE



Single Room Application
Bay fireplaces feature three open sides - view the flame from the front and both sides.

Decorative Side Box
When a decorative box is added, the panel between the standard fire and the decorative box is glass.

Global Compliance
These models comply with existing standards in the USA, Europe, UK and Australia. UL Listed, EN 16647 BSI Certified, ACCC Safety Mandate compliant.

Clean Burning
Fueled by clean burning e-NRG bioethanol

Toughened Safety Screen
Your Flex Fireplace features toughened glass to stabilise the flame in windy conditions and provide an additional layer of safety and comfort. The Integrated windscreen sits flush behind the frame.

Luxurious Finish
Available in a timeless black finish, Flex Fireplaces come with stainless steel burners and black glass charcoal.

Built to Last a Lifetime
Zinc sealed steel construction powder coated with super hi-temp black paint prevents rusting so all fireplaces can be used both indoors or outdoors.

Decorative Steel Log Sets (sold separately)
EcoSmart Fire offers non-combustible logs as an optional, eye-catching accessory for models with the decorative side box. Made from stainless steel with a patina finish, they are available in different finishes.
**Decorative logs must NOT be placed directly over an open flame. They are designed to sit near heat but not over flames.*

Zero Clearance
Self-contained, zero clearance construction allows your Flex fireplace to be framed into wood or metal studs, providing installation freedom and flexibility for builders, architects, interior designers, landscapers and homeowners.

Included Accessories

- Jerry Can
- Lighting Rod + Lighter
- Operations Manual
- Baffles
- Black Glass Charcoal

Optional Accessory

- Decorative Steel Logs

Disclaimer. All product specifications and data are subject to change without notice and believed to be correct at the time of publication. MAD Design Group (MDG), its affiliates, agents, and employees, and all persons acting on its or their behalf (collectively, "MAD Design Group"), disclaim any and all liability for any errors, inaccuracies or incompleteness contained herein or in any other disclosure relating to any product. MDG disclaims any and all liability arising out of the use or application of any product described herein or of any information provided herein to the maximum extent permitted by law. The product specifications do not expand or otherwise modify MDG's terms and conditions of purchase, including but not limited to the warranty expressed therein, which apply to these products. No license, express or implied, by estoppel or otherwise, to any intellectual property rights is granted by this document or by any conduct of MDG. Customers using or selling MDG products not expressly indicated for use in such applications do so entirely at their own risk and agree to fully indemnify MDG for any damages arising or resulting from such use or sale. Please contact authorised personnel from MDG to obtain written terms and conditions regarding products designed for such applications. Images are indicative only.

Bay Fireplaces

| | |
|--------------------|--|
| Award | 2020 BIMsmith Best Award (USA) |
| Application | Indoor & Outdoor |
| Materials | Mild Steel (Zinc Sealed), Toughened Glass, Grade 304 Stainless Steel |
| Colours | Black Firebox, Stainless Steel Burner/s |
| Fuel Type | e-NRG Bioethanol |

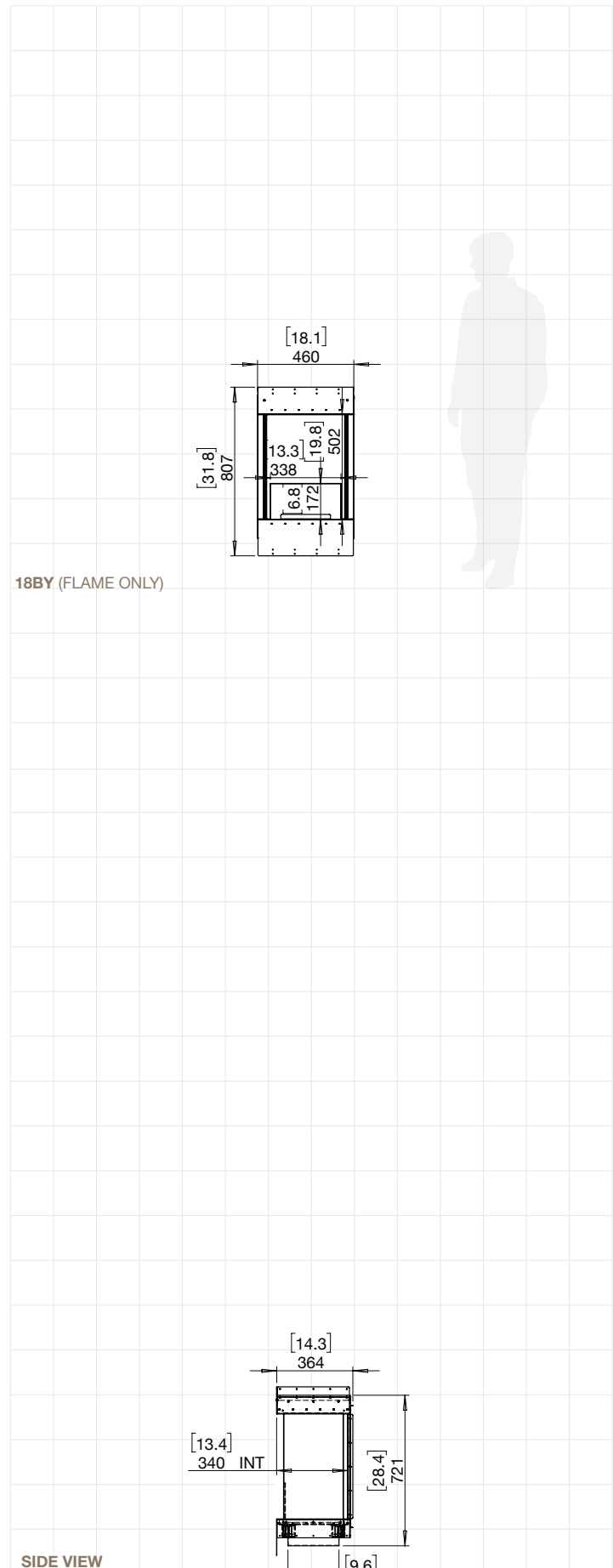
FLEX18

ESF.1.FX.18BY

| | |
|---|--|
| Weight | 40.7kg [89.5lbs] (incl. burner/s, glass charcoal, glass) |
| Burner | AB3 x 1 |
| Volume Capacity | 2.5 Litres [0.7 Gallons] |
| Heats on Average (when used indoors) | Over 20 square metres [215 square feet] |
| Burn Time | 8 - 11 hours (approx) |
| Minimum Room Size | 40 cubic metres [1413 cubic feet] per fireplace. |
| Minimum Wall Length | 635mm [25in] |

Physical model dimensions should be verified against cut out dimensions BEFORE installation begins to confirm tolerances align.

These values are indicative only and may vary depending on the model purchased, installation, and the seasonal resource used to manufacture e-NRG.



FOR MORE INFORMATION PLEASE REFERENCE THE CLEARANCE & INSTALLATION MANUAL

Disclaimer. All product specifications and data are subject to change without notice and believed to be correct at the time of publication. MAD Design Group (MDG), its affiliates, agents, and employees, and all persons acting on its or their behalf (collectively, "MAD Design Group"), disclaim any and all liability for any errors, inaccuracies or incompleteness contained herein or in any other disclosure relating to any product. MDG disclaims any and all liability arising out of the use or application of any product described herein or of any information provided herein to the maximum extent permitted by law. The product specifications do not expand or otherwise modify MDG's terms and conditions of purchase, including but not limited to the warranty expressed therein, which apply to these products. No license, express or implied, by estoppel or otherwise, to any intellectual property rights is granted by this document or by any conduct of MDG. Customers using or selling MDG products not expressly indicated for use in such applications do so entirely at their own risk and agree to fully indemnify MDG for any damages arising or resulting from such use or sale. Please contact authorised personnel from MDG to obtain written terms and conditions regarding products designed for such applications. Images are indicative only.

Bay
Installations



FLEX68BY.BXL



FLEX104BY.BXL



FLEX122BY.BX2



FLEX104BY.BX2

FLEX 32BY

BAY FIREPLACE



Bay Fireplaces

| | |
|--------------------|--|
| Award | 2020 BIMsmith Best Award (USA) |
| Application | Indoor & Outdoor |
| Materials | Mild Steel (Zinc Sealed), Toughened Glass, Grade 304 Stainless Steel |
| Colours | Black Firebox, Stainless Steel Burner/s |
| Fuel Type | e-NRG Bioethanol |

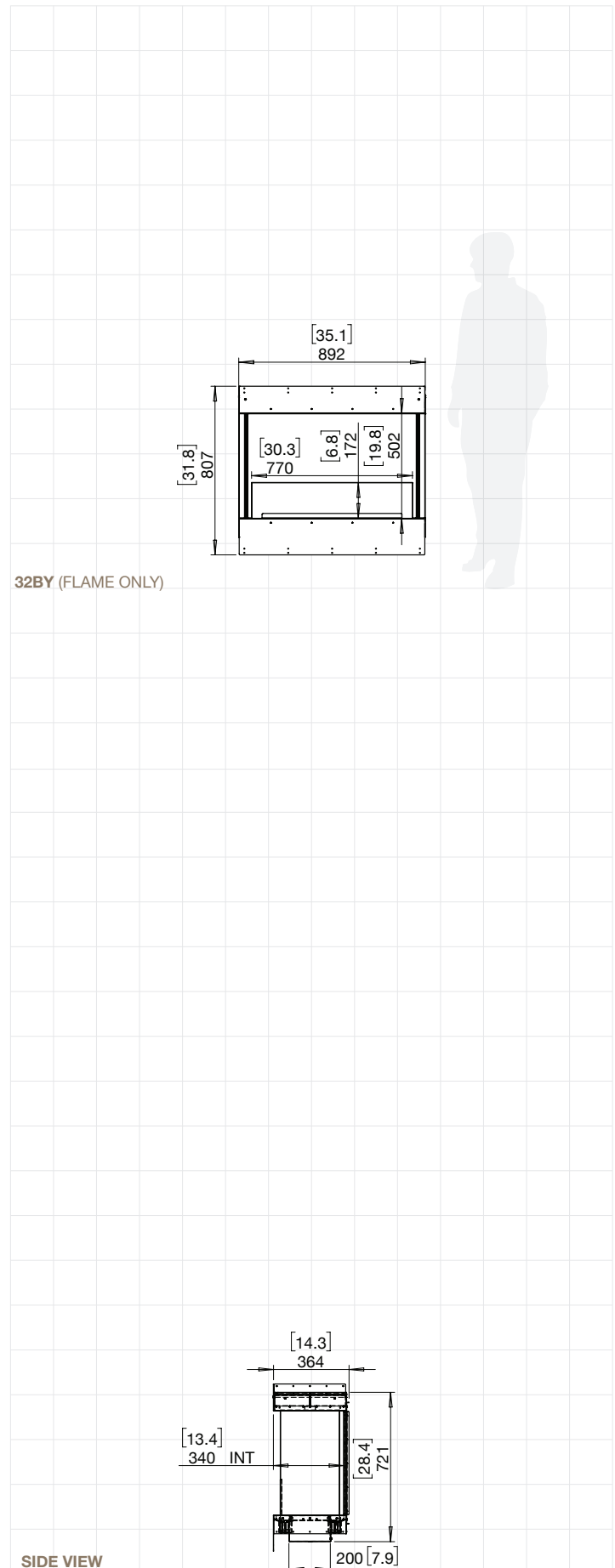
FLEX32

ESF.1.FX.32BY

| | |
|---|---|
| Weight | 51.9kg [114.2lbs] (Incl. burner/s, glass charcoal, glass) |
| Burner | XL500 x 1 |
| Volume Capacity | 5 Litres [1.3 Gallons] |
| Heats on Average (when used indoors) | Over 40 square metres [430.6 square feet] |
| Burn Time | 10 - 13 hours (approx) |
| Minimum Room Size | 80 cubic metres [2825 cubic feet] per fireplace. |
| Minimum Wall Length | 1,015mm [40in] |

Physical model dimensions should be verified against cut out dimensions BEFORE installation begins to confirm tolerances align.

These values are indicative only and may vary depending on the model purchased, installation, and the seasonal resource used to manufacture e-NRG.



FOR MORE INFORMATION PLEASE REFERENCE THE CLEARANCE & INSTALLATION MANUAL

Disclaimer: All product specifications and data are subject to change without notice and believed to be correct at the time of publication. MAD Design Group (MDG), its affiliates, agents, and employees, and all persons acting on its or their behalf (collectively, "MAD Design Group"), disclaim any and all liability for any errors, inaccuracies or incompleteness contained herein or in any other disclosure relating to any product. MDG disclaims any and all liability arising out of the use or application of any product described herein or of any information provided herein to the maximum extent permitted by law. The product specifications do not expand or otherwise modify MDG's terms and conditions of purchase, including but not limited to the warranty expressed therein, which apply to these products. No license, express or implied, by estoppel or otherwise, to any intellectual property rights is granted by this document or by any conduct of MDG. Customers using or selling MDG products not expressly indicated for use in such applications do so entirely at their own risk and agree to fully indemnify MDG for any damages arising or resulting from such use or sale. Please contact authorised personnel from MDG to obtain written terms and conditions regarding products designed for such applications. Images are indicative only.

FLEX 42BY

BAY FIREPLACE



Bay Fireplaces

| | |
|--------------------|--|
| Award | 2020 BIMsmith Best Award (USA) |
| Application | Indoor & Outdoor |
| Materials | Mild Steel (Zinc Sealed), Toughened Glass, Grade 304 Stainless Steel |
| Colours | Black Firebox, Stainless Steel Burner/s |
| Fuel Type | e-NRG Bioethanol |

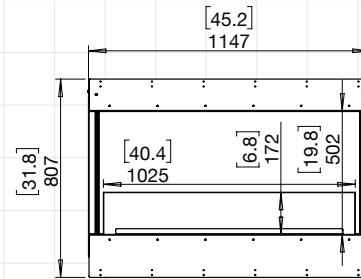
FLEX42

ESF.1.FX.42BY

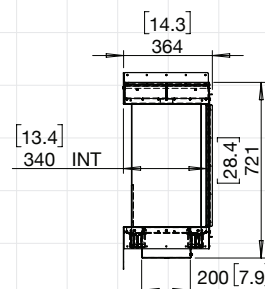
| | |
|---|---|
| Weight | 66.5kg [146.3lbs] (incl. burner/s, glass charcoal, glass) |
| Burner | XL700 x 1 |
| Volume Capacity | 7 Litres [1.8 Gallons] |
| Heats on Average (when used indoors) | Over 50 square metres [538 square feet] |
| Burn Time | 9 - 12 hours (approx) |
| Minimum Room Size | 90 cubic metres [3178 cubic feet] per fireplace. |
| Minimum Wall Length | 1,270mm [50in] |

Physical model dimensions should be verified against cut out dimensions BEFORE installation begins to confirm tolerances align.

These values are indicative only and may vary depending on the model purchased, installation, and the seasonal resource used to manufacture e-NRG.



42BY (FLAME ONLY)



SIDE VIEW

FOR MORE INFORMATION PLEASE REFERENCE THE CLEARANCE & INSTALLATION MANUAL

Disclaimer. All product specifications and data are subject to change without notice and believed to be correct at the time of publication. MAD Design Group (MDG), its affiliates, agents, and employees, and all persons acting on its or their behalf (collectively, "MAD Design Group"), disclaim any and all liability for any errors, inaccuracies or incompleteness contained herein or in any other disclosure relating to any product. MDG disclaims any and all liability arising out of the use or application of any product described herein or of any information provided herein to the maximum extent permitted by law. The product specifications do not expand or otherwise modify MDG's terms and conditions of purchase, including but not limited to the warranty expressed therein, which apply to these products. No license, express or implied, by estoppel or otherwise, to any intellectual property rights is granted by this document or by any conduct of MDG. Customers using or selling MDG products not expressly indicated for use in such applications do so entirely at their own risk and agree to fully indemnify MDG for any damages arising or resulting from such use or sale. Please contact authorised personnel from MDG to obtain written terms and conditions regarding products designed for such applications. Images are indicative only.

FLEX 50BY

BAY FIREPLACE



BAY FIREPLACES

| | |
|--------------------|---|
| Application | Indoor & Outdoor |
| Materials | Mild Steel (Zinc Sealed), Toughened Glass, Stainless Steel & Black Glass Charcoal as Decorative Media |
| Colours | Black Firebox, Stainless Steel Burner/s |
| Fuel Type | e-NRG Bioethanol |

FLEX50

ESF.1.FX.50BY

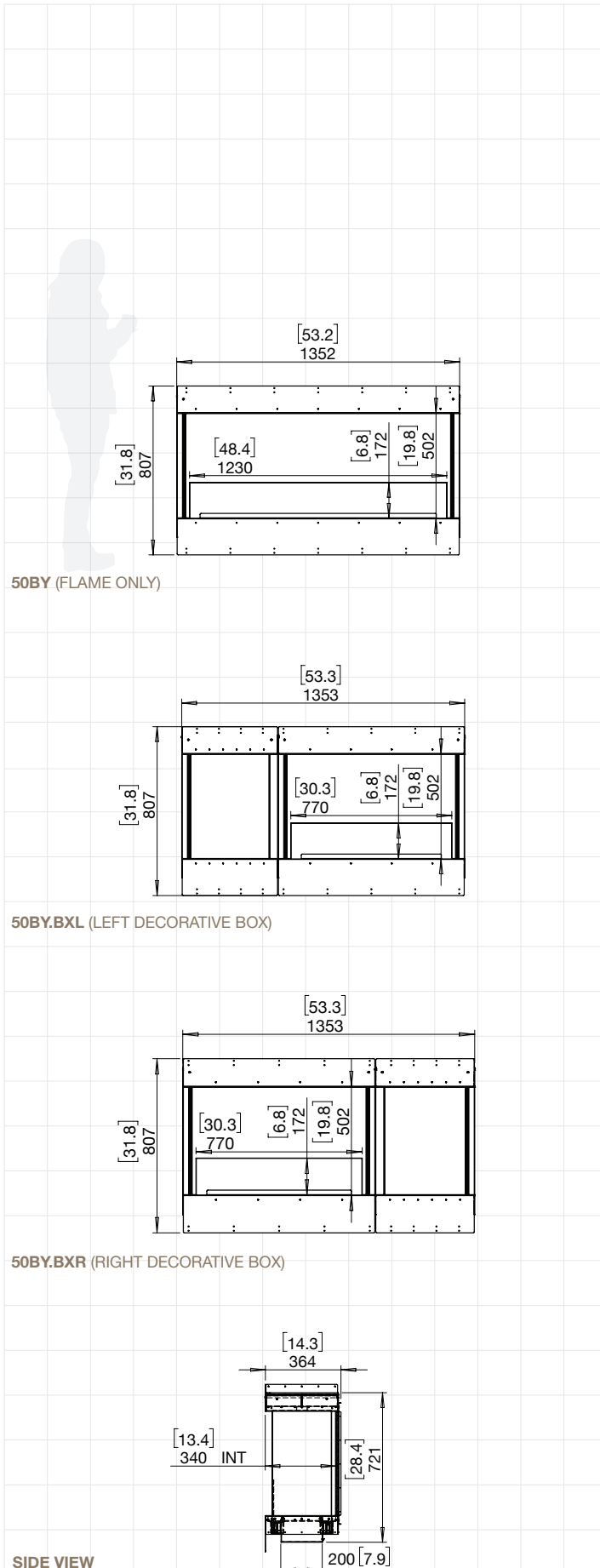
| | |
|---|---|
| Weight | 71.8kg [158lbs] (Incl. burner/s, glass charcoal, glass) |
| Burner | XL900 x 1 |
| Volume Capacity | 9 Litres [2.4 Gallons] |
| Heats on Average (when used indoors) | Over 60 square metres [645 square feet] |
| Burn Time | 8 - 13 hours (approx) |
| Minimum Room Size | 110 cubic metres [3884 cubic feet] per fireplace. |
| Minimum Wall Length | 1,475mm [58in] |

ESF.1.FX.50BY.BXL ESF.1.FX.50BY.BXR

| | |
|---|---|
| Weight | 76.2kg [167.6lbs] (Incl. burner/s, glass charcoal, glass) |
| Burner | XL500 x 1 |
| Volume Capacity | 5 Litres [1.3 Gallons] |
| Heats on Average (when used indoors) | Over 40 square metres [430.6 square feet] |
| Burn Time | 10 - 13 hours (approx) |
| Minimum Room Size | 80 cubic metres [2825 cubic feet] per fireplace. |
| Minimum Wall Length | 1,475mm [58in] |

Physical model dimensions should be verified against cut out dimensions BEFORE installation begins to confirm tolerances align.

These values are indicative only and may vary depending on the model purchased, installation, and the seasonal resource used to manufacture e-NRG.



50BY (FLAME ONLY)

50BY.BXL (LEFT DECORATIVE BOX)

50BY.BXR (RIGHT DECORATIVE BOX)

SIDE VIEW

FOR MORE INFORMATION PLEASE REFERENCE THE CLEARANCE & INSTALLATION MANUAL

Disclaimer: All product specifications and data are subject to change without notice and believed to be correct at the time of publication. MAD Design Group (MDG), its affiliates, agents, and employees, and all persons acting on its or their behalf (collectively, "MAD Design Group"), disclaim any and all liability for any errors, inaccuracies or incompleteness contained herein or in any other disclosure relating to any product. MDG disclaims any and all liability arising out of the use or application of any product described herein to the maximum extent permitted by law. The product specifications do not expand or otherwise modify MDG's terms and conditions of purchase, including but not limited to the warranty expressed therein, which apply to these products. No license, express or implied, by estoppel or otherwise, to any intellectual property rights is granted by this document or by any conduct of MDG. Customers using or selling MDG products not expressly indicated for use in such applications do so entirely at their own risk and agree to fully indemnify MDG for any damages arising or resulting from such use or sale. Please contact authorised personnel from MDG to obtain written terms and conditions regarding products designed for such applications. Images are indicative only.

FLEX 68BY

BAY FIREPLACE



Bay Fireplaces

| | |
|--------------------|--|
| Award | 2020 BIMsmith Best Award (USA) |
| Application | Indoor & Outdoor |
| Materials | Mild Steel (Zinc Sealed), Toughened Glass, Grade 304 Stainless Steel |
| Colours | Black Firebox, Stainless Steel Burner/s |
| Fuel Type | e-NRG Bioethanol |

FLEX68

ESF.2.FX.68BY

| | |
|----------------------------|--|
| Weight | 103.6kg [227.9lbs] (Incl. burner/s, glass charcoal, glass) |
| Burner | XL1200 x 1 |
| Volume Capacity | 10 Litres [2.6 Gallons] x 1 |
| Heats on Average | Over 65 square metres [700 square feet] |
| Burn Time | 9 - 14 hours (approx) |
| Minimum Room Size | 115 cubic metres [4061 cubic feet] per fireplace |
| Minimum Wall Length | 1,935mm [76in] |

ESF.1.FX.68BY.BX2

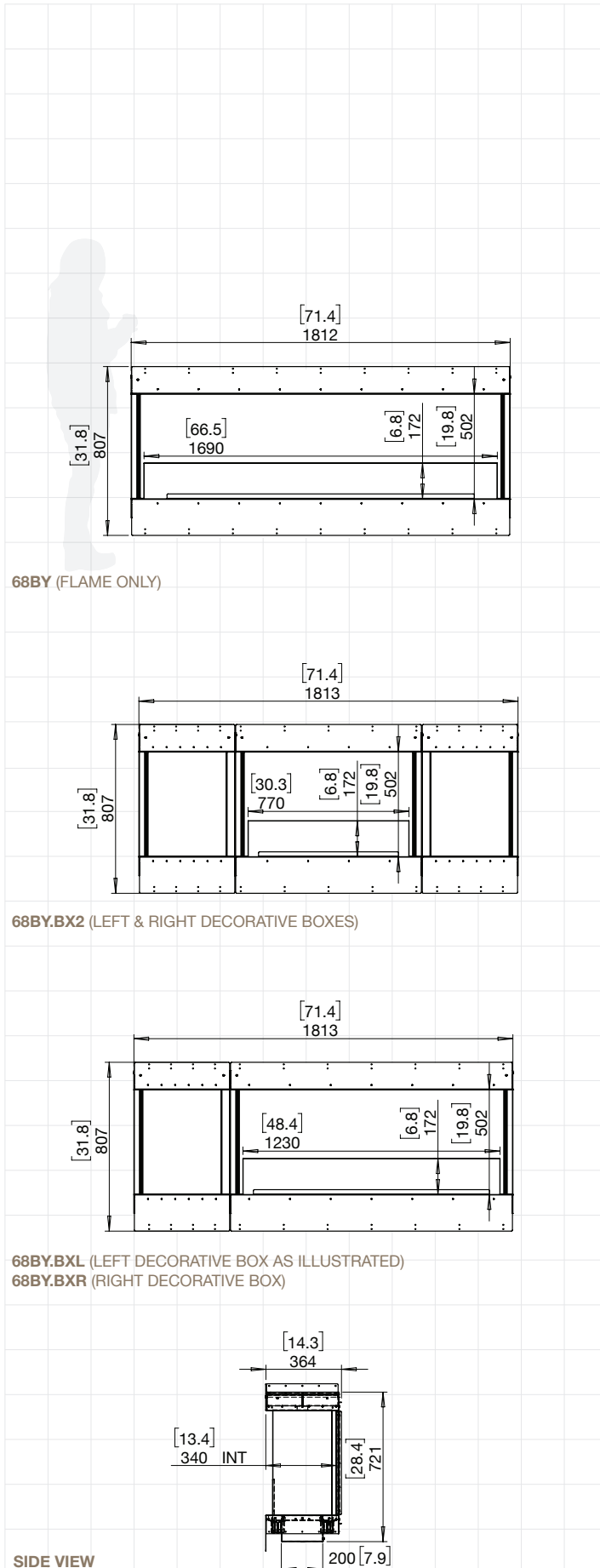
| | |
|----------------------------|--|
| Weight | 100.2kg [220.4lbs] (Incl. burner/s, glass charcoal, glass) |
| Burner | XL500 x 1 |
| Volume Capacity | 5 Litres [1.3 Gallons] |
| Heats on Average | Over 40 square metres [430.6 square feet] |
| Burn Time | 10 - 13 hours (approx) |
| Minimum Room Size | 80 cubic metres [2825 cubic feet] per fireplace. |
| Minimum Wall Length | 1,935mm [76in] |

ESF.1.FX.68BY.BXL ESF.1.FX.68BY.BXR

| | |
|----------------------------|---|
| Weight | 95.5kg [210.1lbs] (Incl. burner/s, glass charcoal, glass) |
| Burner | XL900 x 1 |
| Volume Capacity | 9 Litres [2.4 Gallons] |
| Heats on Average | Over 60 square metres [645 square feet] |
| Burn Time | 8 - 13 hours (approx) |
| Minimum Room Size | 110 cubic metres [3884 cubic feet] per fireplace. |
| Minimum Wall Length | 1,935mm [76in] |

Physical model dimensions should be verified against cut out dimensions BEFORE installation begins to confirm tolerances align.

These values are indicative only and may vary depending on the model purchased, installation, and the seasonal resource used to manufacture e-NRG.



FOR MORE INFORMATION PLEASE REFERENCE THE CLEARANCE & INSTALLATION MANUAL

Disclaimer: All product specifications and data are subject to change without notice and believed to be correct at the time of publication. MAD Design Group (MDG), its affiliates, agents, and employees, and all persons acting on its or their behalf (collectively, "MAD Design Group"), disclaim any and all liability for any errors, inaccuracies or incompleteness contained herein or in any other disclosure relating to any product. MDG disclaims any and all liability arising out of the use or application of any product described herein or of any information provided herein to the maximum extent permitted by law. The product specifications do not expand or otherwise modify MDG's terms and conditions of purchase, including but not limited to the warranty expressed therein, which apply to these products. No license, express or implied, by estoppel or otherwise, to any intellectual property rights is granted by this document or by any conduct of MDG. Customers using or selling MDG products not expressly indicated for use in such applications do so entirely at their own risk and agree to fully indemnify MDG for any damages arising or resulting from such use or sale. Please contact authorised personnel from MDG to obtain written terms and conditions regarding products designed for such applications. Images are indicative only.

FLEX 86BY

BAY FIREPLACE



Bay Fireplaces

| | |
|--------------------|--|
| Award | 2020 BIMsmith Best Award (USA) |
| Application | Indoor & Outdoor |
| Materials | Mild Steel (Zinc Sealed), Toughened Glass, Grade 304 Stainless Steel |
| Colours | Black Firebox, Stainless Steel Burner/s |
| Fuel Type | e-NRG Bioethanol |

FLEX86

ESF.1.FX.86BY

| | |
|----------------------------|--|
| Weight | 121.9kg [268.2lbs] (Incl. burner/s, glass charcoal, glass) |
| Burner | XL900 x 2 |
| Volume Capacity | 9 Litres [2.4 Gallons] x 2 |
| Heats on Average | Over 120 square metres [1290 square feet] |
| Burn Time | 8 - 13 hours (approx) |
| Minimum Room Size | 220 cubic metres [7768 cubic feet] per fireplace |
| Minimum Wall Length | 2,395mm [94in] |

ESF.1.FX.86BY.BX2

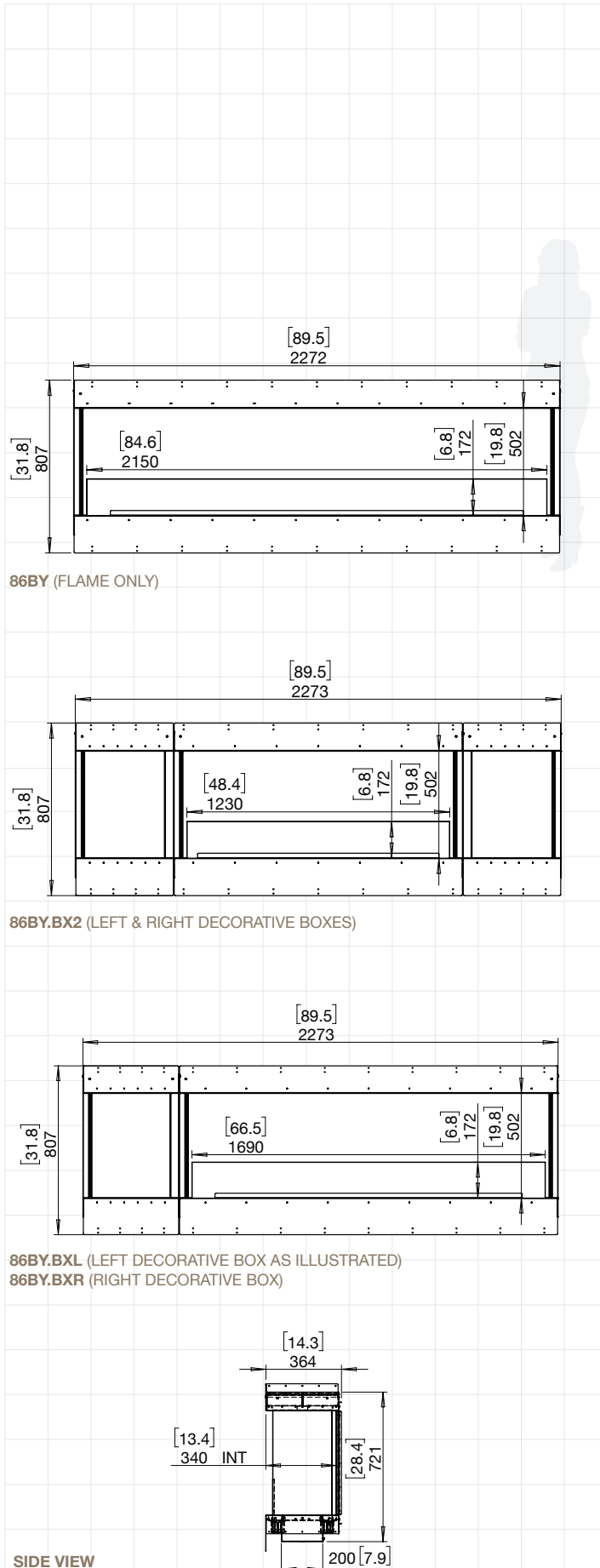
| | |
|----------------------------|--|
| Weight | 119.2kg [262.2lbs] (Incl. burner/s, glass charcoal, glass) |
| Burner | XL900 x 1 |
| Volume Capacity | 9 Litres [2.4 Gallons] |
| Heats on Average | Over 60 square metres [645 square feet] |
| Burn Time | 8 - 13 hours (approx) |
| Minimum Room Size | 110 cubic metres [3884 cubic feet] per fireplace |
| Minimum Wall Length | 2,395mm [94in] |

ESF.2.FX.86BY.BXL ESF.2.FX.86BY.BXR

| | |
|----------------------------|--|
| Weight | 125.9kg [277lbs] (Incl. burner/s, glass charcoal, glass) |
| Burner | XL1200 x 1 |
| Volume Capacity | 10 Litres [2.6 Gallons] x 1 |
| Heats on Average | Over 65 square metres [700 square feet] |
| Burn Time | 9 - 14 hours (approx) |
| Minimum Room Size | 115 cubic metres [4061 cubic feet] per fireplace |
| Minimum Wall Length | 2,395mm [94in] |

Physical model dimensions should be verified against cut out dimensions BEFORE installation begins to confirm tolerances align.

These values are indicative only and may vary depending on the model purchased, installation, and the seasonal resource used to manufacture e-NRG.



FOR MORE INFORMATION PLEASE REFERENCE THE CLEARANCE & INSTALLATION MANUAL

Disclaimer: All product specifications and data are subject to change without notice and believed to be correct at the time of publication. MAD Design Group (MDG), its affiliates, agents, and employees, and all persons acting on its or their behalf (collectively, "MAD Design Group"), disclaim any and all liability for any errors, inaccuracies or incompleteness contained herein or in any other disclosure relating to any product. MDG disclaims any and all liability arising out of the use or application of any product described herein or of any information provided herein to the maximum extent permitted by law. The product specifications do not expand or otherwise modify MDG's terms and conditions of purchase, including but not limited to the warranty expressed therein, which apply to these products. No license, express or implied, by estoppel or otherwise, to any intellectual property rights is granted by this document or by any conduct of MDG. Customers using or selling MDG products not expressly indicated for use in such applications do so entirely at their own risk and agree to fully indemnify MDG for any damages arising or resulting from such use or sale. Please contact authorised personnel from MDG to obtain written terms and conditions regarding products designed for such applications. Images are indicative only.

FLEX 122BY

BAY FIREPLACE



Bay Fireplaces

| | |
|--------------------|--|
| Award | 2020 BIMsmith Best Award (USA) |
| Application | Indoor & Outdoor |
| Materials | Mild Steel (Zinc Sealed), Toughened Glass, Grade 304 Stainless Steel |
| Colours | Black Firebox, Stainless Steel Burner/s |
| Fuel Type | e-NRG Bioethanol |

FLEX122

ESF.1.FX.122BY

| | |
|----------------------------|--|
| Weight | 171.9kg [378.2lbs] (Incl. burner/s, glass charcoal, glass) |
| Burner | XL900 x 3 |
| Volume Capacity | 9 Litres [2.4 Gallons] x 3 |
| Heats on Average | Over 180 square metres [1935 square feet] |
| Burn Time | 8 - 13 hours (approx) |
| Minimum Room Size | 330 cubic metres [11652 cubic feet] per fireplace |
| Minimum Wall Length | 3,315mm [131in] |

ESF.1.FX.122BY.BX2

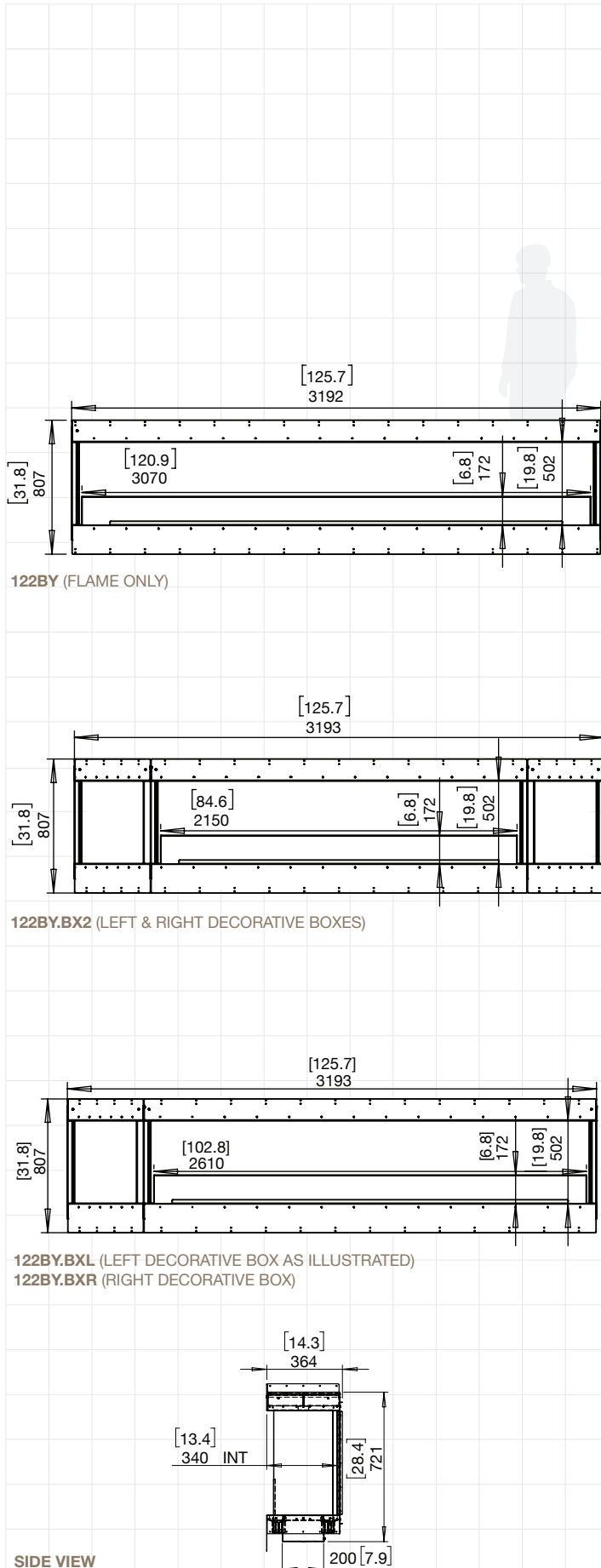
| | |
|----------------------------|--|
| Weight | 169.3kg [372.5lbs] (Incl. burner/s, glass charcoal, glass) |
| Burner | XL900 x 2 |
| Volume Capacity | 9 Litres [2.4 Gallons] x 2 |
| Heats on Average | Over 120 square metres [1290 square feet] |
| Burn Time | 8 - 13 hours (approx) |
| Minimum Room Size | 220 cubic metres [7768 cubic feet] per fireplace |
| Minimum Wall Length | 3,315mm [131in] |

ESF.1.FX.122BY.BXL ESF.1.FX.122BY.BXR

| | |
|----------------------------|--|
| Weight | 176.7kg [388.7lbs] (Incl. burner/s, glass charcoal, glass) |
| Burner | XL1200 x 2 |
| Volume Capacity | 10 Litres [2.6 Gallons] x 2 |
| Heats on Average | Over 130 square metres [1400 square feet] |
| Burn Time | 9 - 14 hours (approx) |
| Minimum Room Size | 230 cubic metres [8122 cubic feet] per fireplace |
| Minimum Wall Length | 3,315mm [131in] |

Physical model dimensions should be verified against cut out dimensions BEFORE installation begins to confirm tolerances align.

These values are indicative only and may vary depending on the model purchased, installation, and the seasonal resource used to manufacture e-NRG.

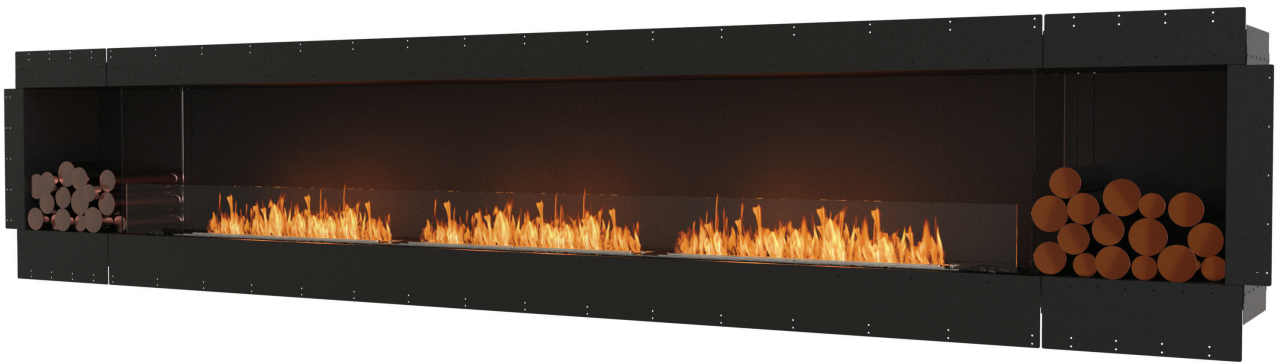


FOR MORE INFORMATION PLEASE REFERENCE THE CLEARANCE & INSTALLATION MANUAL

Disclaimer: All product specifications and data are subject to change without notice and believed to be correct at the time of publication. MAD Design Group (MDG), its affiliates, agents, and employees, and all persons acting on its or their behalf (collectively, "MAD Design Group"), disclaim any and all liability for any errors, inaccuracies or incompleteness contained herein or in any other disclosure relating to any product. MDG disclaims any and all liability arising out of the use or application of any product described herein or of any information provided herein to the maximum extent permitted by law. The product specifications do not expand or otherwise modify MDG's terms and conditions of purchase, including but not limited to the warranty expressed therein, which apply to these products. No license, express or implied, by estoppel or otherwise, to any intellectual property rights is granted by this document or by any conduct of MDG. Customers using or selling MDG products not expressly indicated for use in such applications do so entirely at their own risk and agree to fully indemnify MDG for any damages arising or resulting from such use or sale. Please contact authorised personnel from MDG to obtain written terms and conditions regarding products designed for such applications. Images are indicative only.

FLEX 158BY

**BAY
FIREPLACE**



Bay Fireplaces

| | |
|--------------------|--|
| Award | 2020 BIMsmith Best Award (USA) |
| Application | Indoor & Outdoor |
| Materials | Mild Steel (Zinc Sealed), Toughened Glass, Grade 304 Stainless Steel |
| Colours | Black Firebox, Stainless Steel Burner/s |
| Fuel Type | e-NRG Bioethanol |

FLEX158

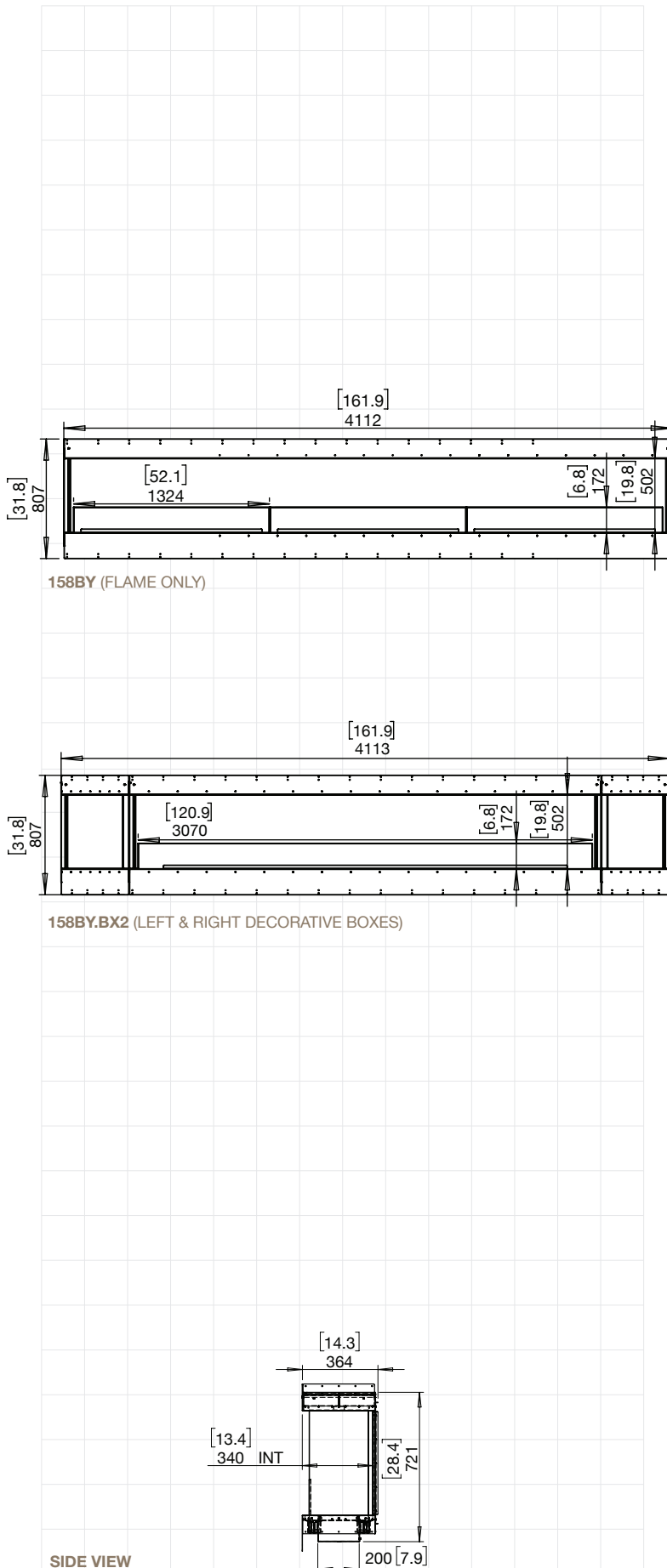
ESF.1.FX.158BY

| | |
|----------------------------|--|
| Weight | 228.8kg [503.4lbs] (Incl. burner/s, glass charcoal, glass) |
| Burner | XL1200 x 3 |
| Volume Capacity | 10 Litres [2.6 Gallons] x 3 |
| Heats on Average | Over 195 square metres [2100 square feet] |
| Burn Time | 9 - 14 hours (approx) |
| Minimum Room Size | 345 cubic metres [12183 cubic feet] per fireplace |
| Minimum Wall Length | 4,235mm [167in] |

ESF.1.FX.158BY.BX2

| | |
|----------------------------|--|
| Weight | 219.3kg [482.5lbs] (Incl. burner/s, glass charcoal, glass) |
| Burner | XL900 x 3 |
| Volume Capacity | 9 Litres [2.4 Gallons] x 3 |
| Heats on Average | Over 180 square metres [1935 square feet] |
| Burn Time | 8 - 13 hours (approx) |
| Minimum Room Size | 330 cubic metres [11652 cubic feet] per fireplace |
| Minimum Wall Length | 4,235mm [167in] |

w



FOR MORE INFORMATION PLEASE REFERENCE THE CLEARANCE & INSTALLATION MANUAL

Disclaimer: All product specifications and data are subject to change without notice and believed to be correct at the time of publication. MAD Design Group (MDG), its affiliates, agents, and employees, and all persons acting on its or their behalf (collectively, "MAD Design Group"), disclaim any and all liability for any errors, inaccuracies or incompleteness contained herein or in any other disclosure relating to any product. MDG disclaims any and all liability arising out of the use or application of any product described herein to the maximum extent permitted by law. The product specifications do not expand or otherwise modify MDG's terms and conditions of purchase, including but not limited to the warranty expressed therein, which apply to these products. No license, express or implied, by estoppel or otherwise, to any intellectual property rights is granted by this document or by any conduct of MDG. Customers using or selling MDG products not expressly indicated for use in such applications do so entirely at their own risk and agree to fully indemnify MDG for any damages arising or resulting from such use or sale. Please contact authorised personnel from MDG to obtain written terms and conditions regarding products designed for such applications. Images are indicative only.