

# Burner Collection

## 60" Burner



**Black**



### Included Accessories



**Lighting Rod**

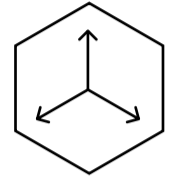
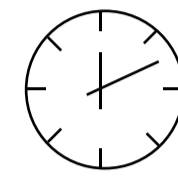
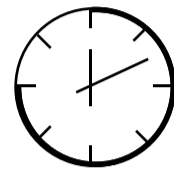
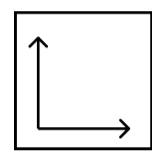
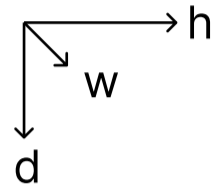
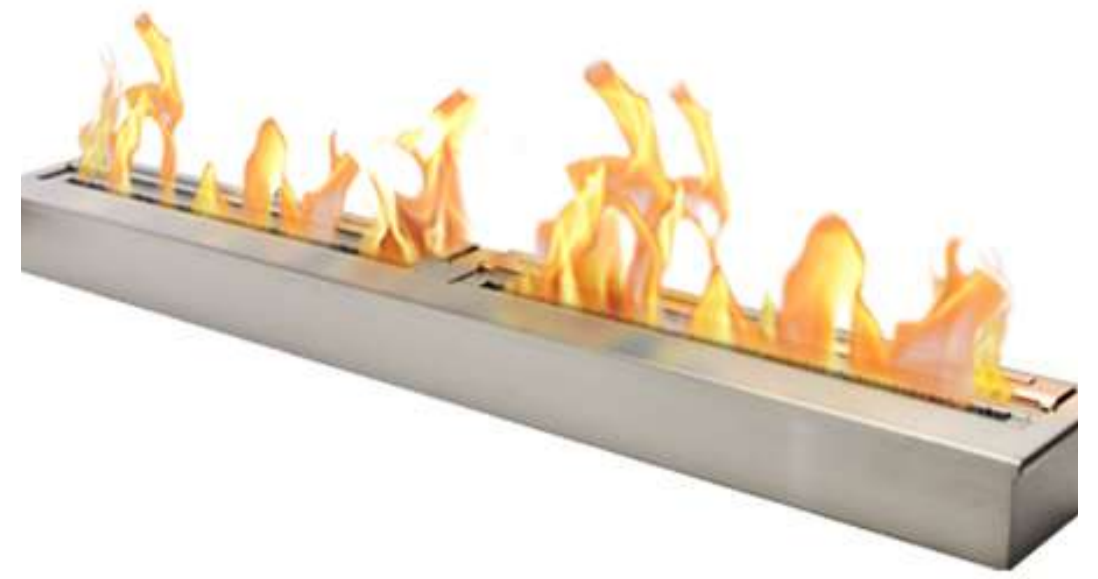


**Lighter**



**Funnel**

# Burner Collection 60" Burner



Dimensions H x W x D mm/in	Fuel Capacity	Heats on Average (indoors)	Fuel Consumption	Thermal Output Net (MAX)	Approx. Burn Time	Minimum Room Size (per burner)
115 x 1524 x 193 4.5 x 60.0 x 7.6	18L	Over 158m <sup>2</sup> [1,640 ft <sup>2</sup> ]	1.80L per hour	43,000 BTU/h 12.6 Kw	10 hours	400 sq. ft.

## Awards

2010 Winner Outdoor Hearth Products  
Vesta Awards

## Application

Indoor & Outdoor

## Burner Colour

Stainless Steel
  Black

## Materials

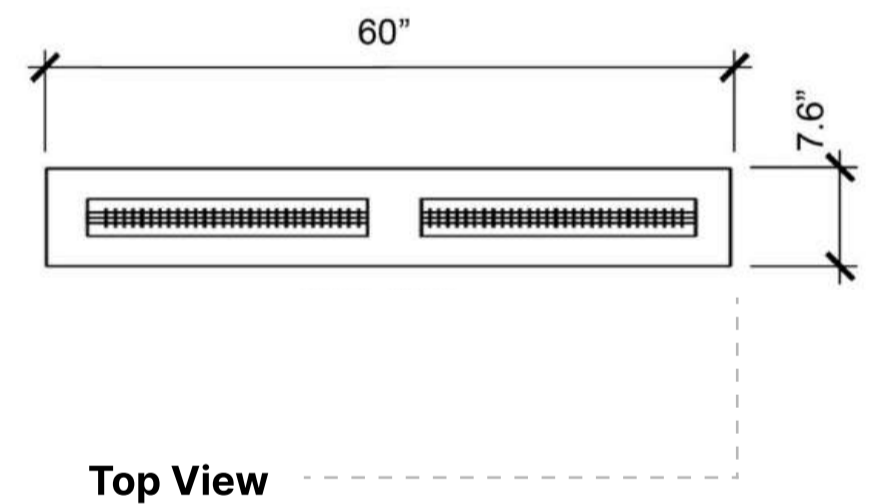
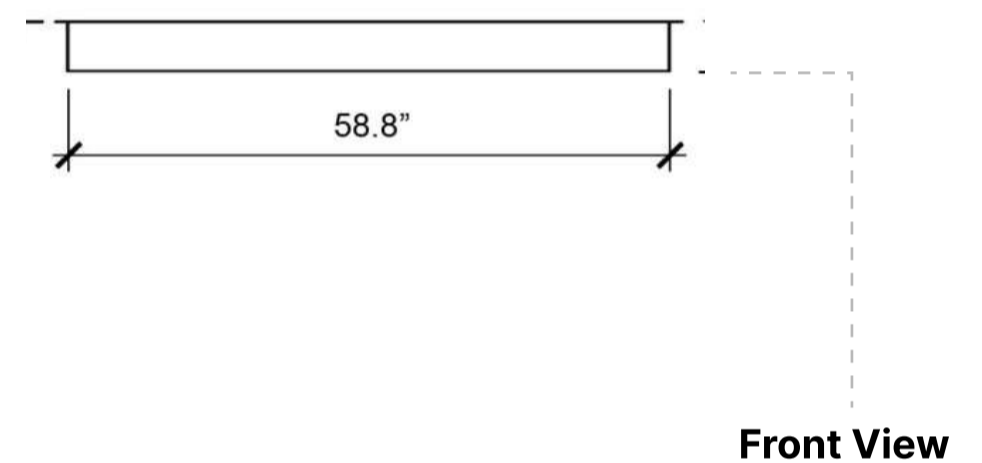
Grade 304 Stainless Steel Construction

## Approx. Weight

66 lbs

## Fuel Type

Bio Ethanol Fuel

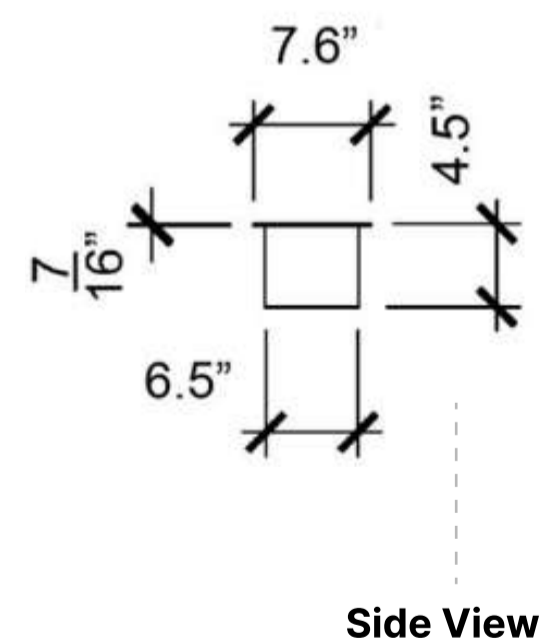


### Inserting within a firebox setting:

The Bio Flame 60" BURNER can only be fitted into a non-combustible firebox that has minimum clearances of 68"W x 24"H x 16"D.

### Custom made fireboxes must:

- Be made out of a non-combustible material such as stainless steel
- \*When recessing the tray into a non-combustible base with no firebox, the overhead clearance required is 60"MIN. to the nearest combustible\*



Lifetime Warranty

**FOR MORE INFORMATION PLEASE REFERENCE THE CLEARANCE & INSTALLATION MANUAL**

\*Dimensions may vary by 2% (plus or minus) due to material attributes. Template not provided. The Bio Flame recommends using the actual fireplace or burner model when making final cut out

**THE  
BIOFLAME**  
EST.2007

thebioflame.com