

BrewZilla 100L

Single Phase to Three Phase Conversion

**This should only be done by
qualified electrician.**

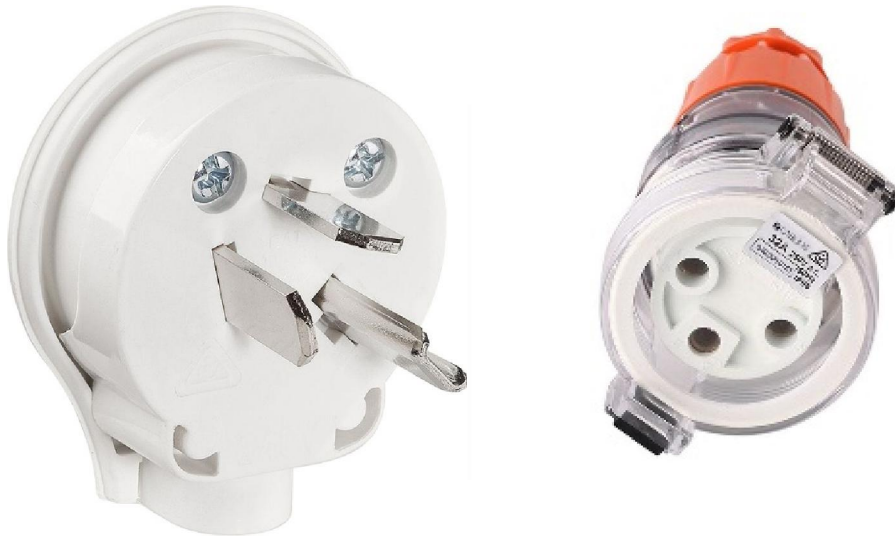
32A Single Phase  10A Three Phase



BrewZilla 100L Power Consumption

The BrewZilla 100L has three heating elements that are concealed and integrated into the base of the brewery. These three elements are approximately 2200watts each meaning the total heating capacity of the brewery is 6600watts.

So if you are using 220-240AC power source the brewery can be powered by 1 x 32amp single phase plug that looks like one of these below:



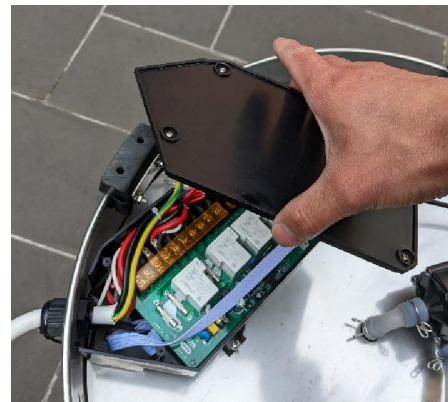
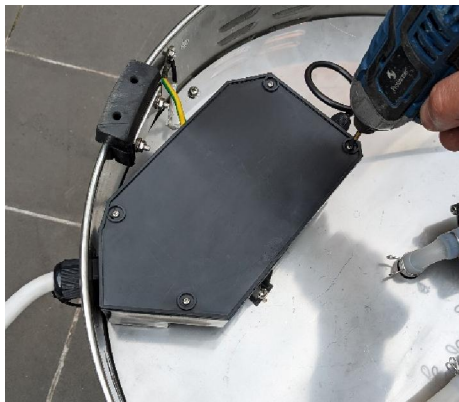
The plug on the left is the standard type that comes included with the brewery out of the box. This single phase plug is also commonly used for electric ovens or electric hob cooktops that you often see in your kitchen. Generally speaking the wiring for this type of plug will be 6mm² copper cable but we recommend you seek separate advice from your electrician to install suitable cable.

Three Phase Installation

If your property has three phase power available you may find it favourable to run the brewery on three phases so you are not putting excessive load onto a single phase at your property and split the load over all three phases evenly. In order to do this conversion follow the instructions below:

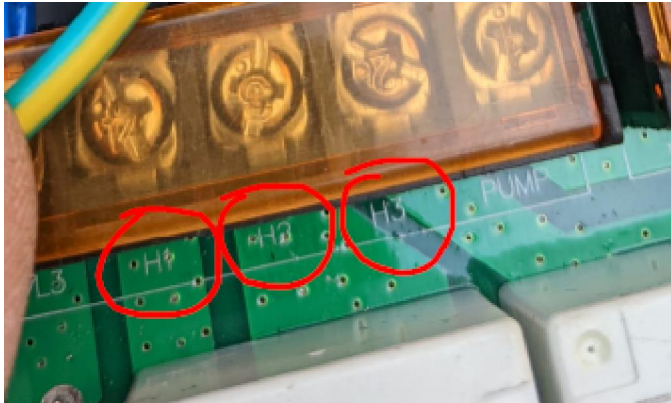
STEP 1

Unplug the brewery from power, turn the brewery upside down and remove the cover from the electrical enclosure on the underside:



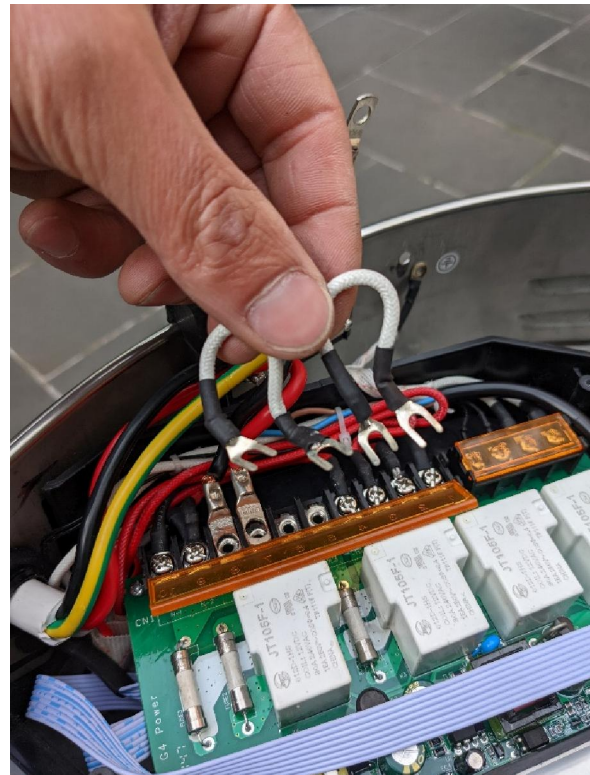
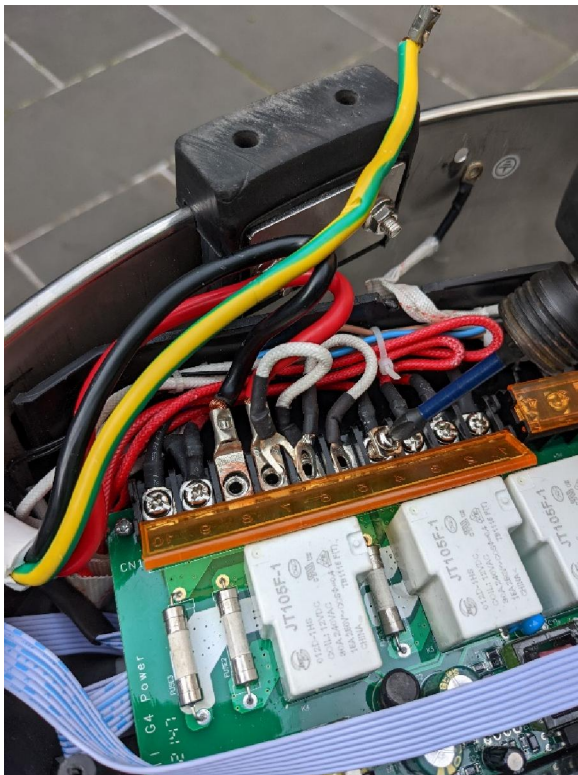
STEP 2

You will see three terminals on the board labelled H1, H2 and H3



These three terminals are connected to the three active sides of the three heating elements.

Remove the jumper cables that bridge H1, H2 and H3 together.



STEP 3

Remove the single phase cable and install the new three phase cable making sure to secure the cable through the cable gland as shown below.

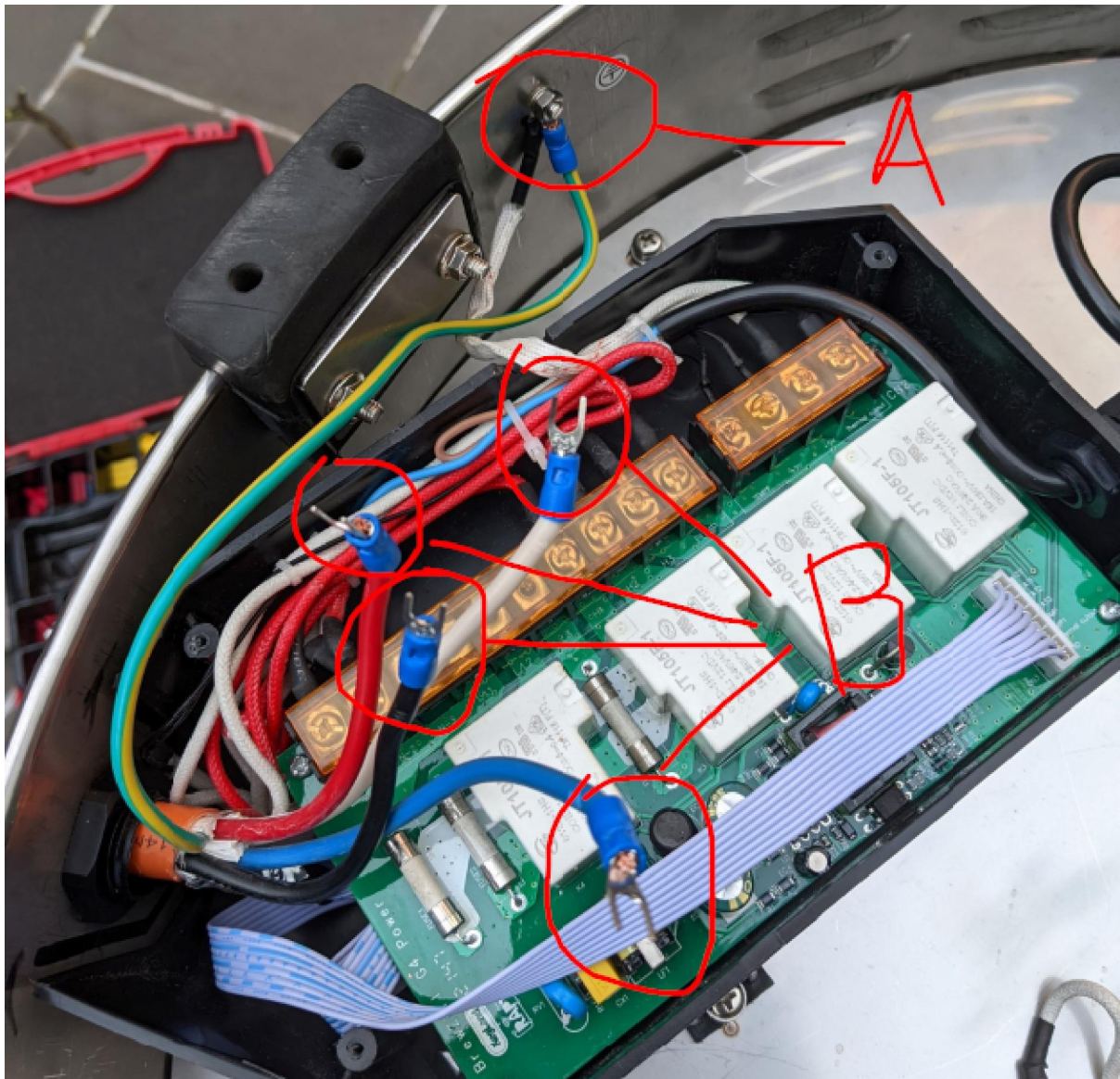
In most instances you will need to use a 2.5mm² three phase cable but check the cable requirements with your electrician.



STEP 4

As shown in 'A' below connect a ring terminal to the earth and secure this to the body of the BrewZilla.

For the three active phases and neutral put fork terminals on these cables as shown in 'B' below.



STEP 5

In Australia the cable colours are:

RED – Active (Live 1)

WHITE – Active (Live 2)

BLUE – Active (Live 3)

BLACK – Neutral

NOTE: Please be aware that different countries use different colours for active and neutral so if you check with your local regulations as to which colours are active and neutral.

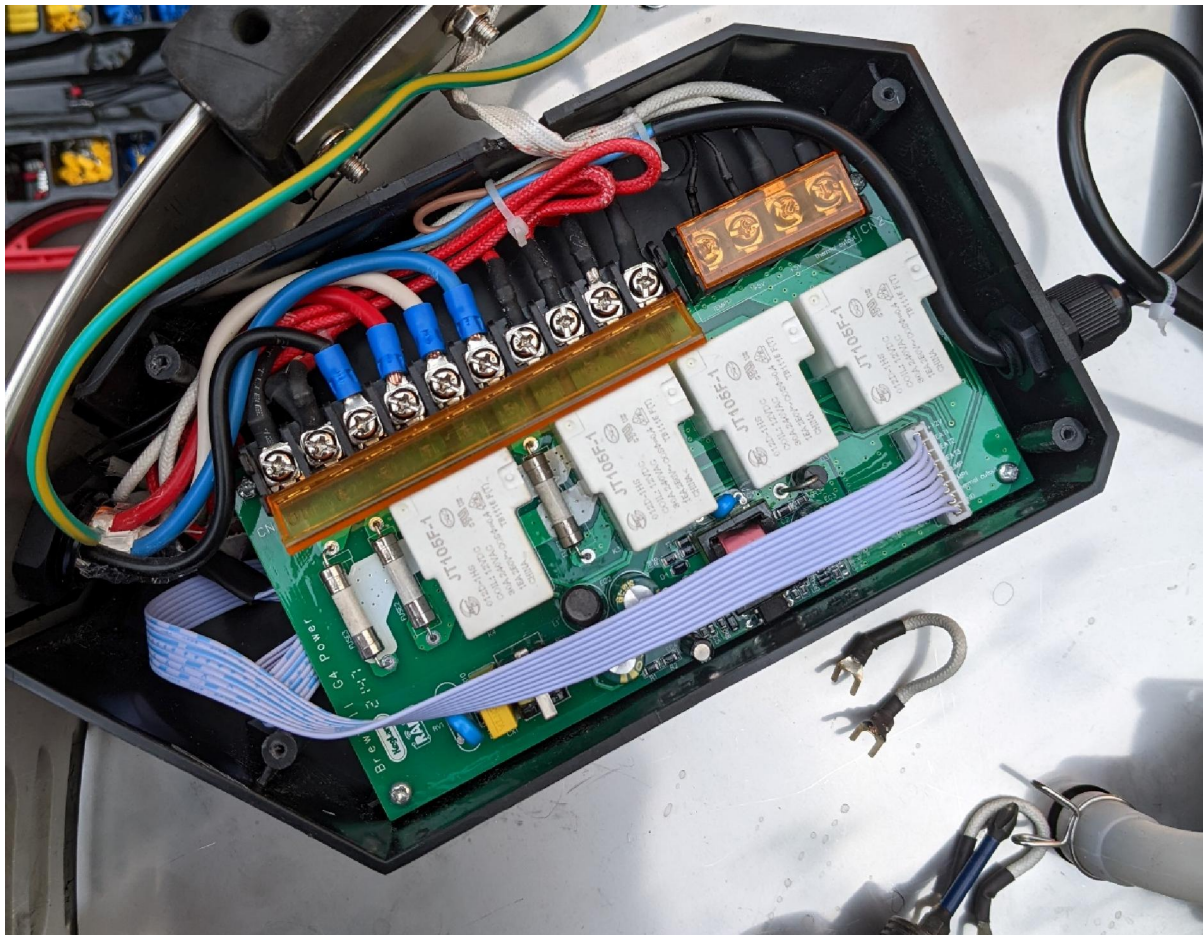
Connect the cables as shown below:

Live 1 to H1

Live 2 to H2

Live 3 to H3

Neutral to N3



STEP 6

Replace the lid for the electrical enclosure. Use a multimeter to check continuity between the body of the BrewZilla and the Earth on the plug. The resistance should be close to 0 Ohms.

