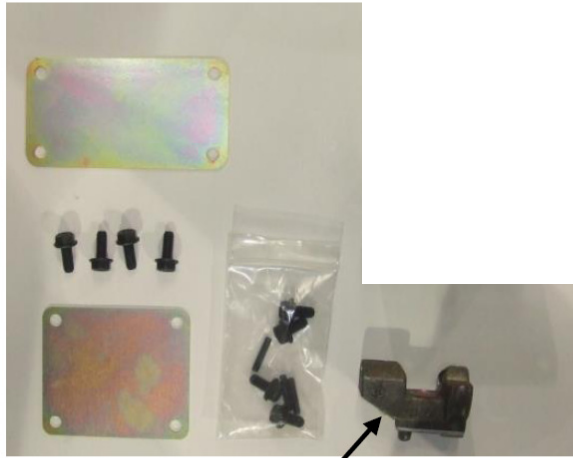


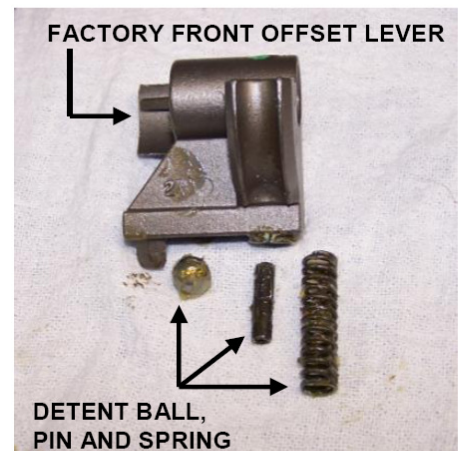
Instructions below are meant as a general guide, from a kit that no longer exists (not mine). Use McLeod receptacle #82-1001.

T56 Transmission Front Shift Kit Installation Instructions



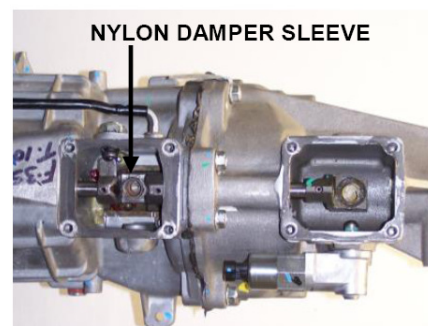
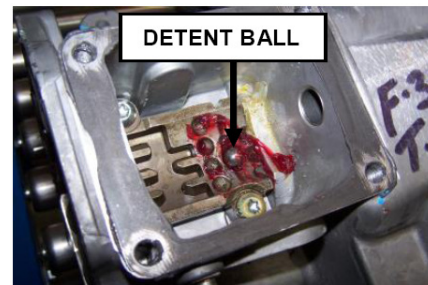
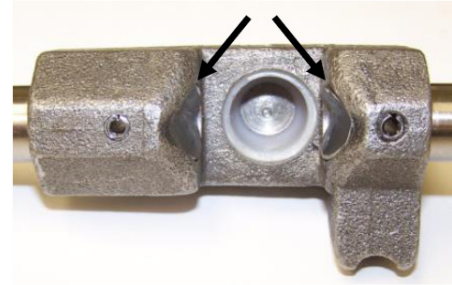
FRONT SHIFT OFFSET LEVER

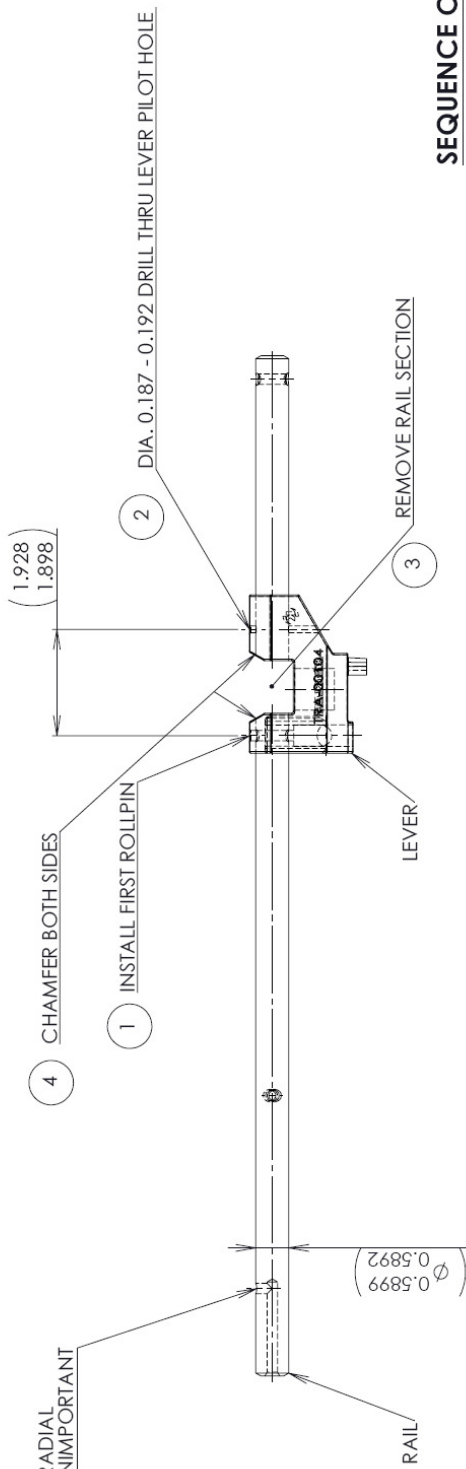
- 1) Remove (4) bolts from rear shifter and pry the shifter off the transmission. Retain the bolts for reassembly. The shifter may be discarded.
- 2) Drive the 3/16" roll pin through the bottom of the rear offset lever and remove lever. If you are going to utilize the electronic reverse lockout feature, retain the rear offset lever and roll pin for re-assembly.
- 3) Remove (4) bolts from the front access plate and pry the plate off the transmission.
- 4) Drive the 3/16" roll pin through the bottom of the front offset lever.
- 5) Disassemble transmission to remove the top shift rail, following the factory TTC Service Manual LD56-0610-0199. The manual is available as a free download at <http://www.ttcautomotive.com/>
- 6) Discard the factory front offset lever, but save the detent ball, pin and spring.



- 7) Modify the top shift rail as per the included Rail Modification drawing instructions
Make sure the rail ends in the offset lever are contoured to match the offset lever.
- 8) Partially reassemble transmission and install front section of the modified shift rail.
- 9) Install the detent spring from Step 6 into the new front shift offset lever and install the detent ball.
- 10) Set the main case into position over the mainshaft and countershaft, and let it rest on top of the dowels, about an inch away from the transmission front adapter.
- 11) Install the new front shift offset lever onto the front shift rail and secure with one of the supplied new 3/16" roll pins.
- 12) Insert the rear section of the modified top shift rail into the lever and secure with the other 3/16" roll pin.
- 13) Complete the assembly of the T56 Extension components and housing.
- 14) Install the supplied nylon damper sleeve into the new front shift offset lever. Apply a bead of RTV sealant around the front shift opening on the transmission. Lightly lubricate the shifter stub ball with grease and install new front shift shifter assembly with the wide flange towards the front of the transmission.
- 15) Install (4) supplied hex bolts and torque to 11-18 lb.-ft.
- 16) If you plan on connecting the electronic reverse lockout solenoid, reinstall the original rear offset lever and secure with the original 3/16" x 1" roll pin.
- 17) There are two different sized rear shifter opening cover plates included in your kit. Select the appropriate size cover for your transmission. Apply a bead of RTV sealant around the shifter opening on the transmission, and install the new rear cover using the bolts from the original shifter.

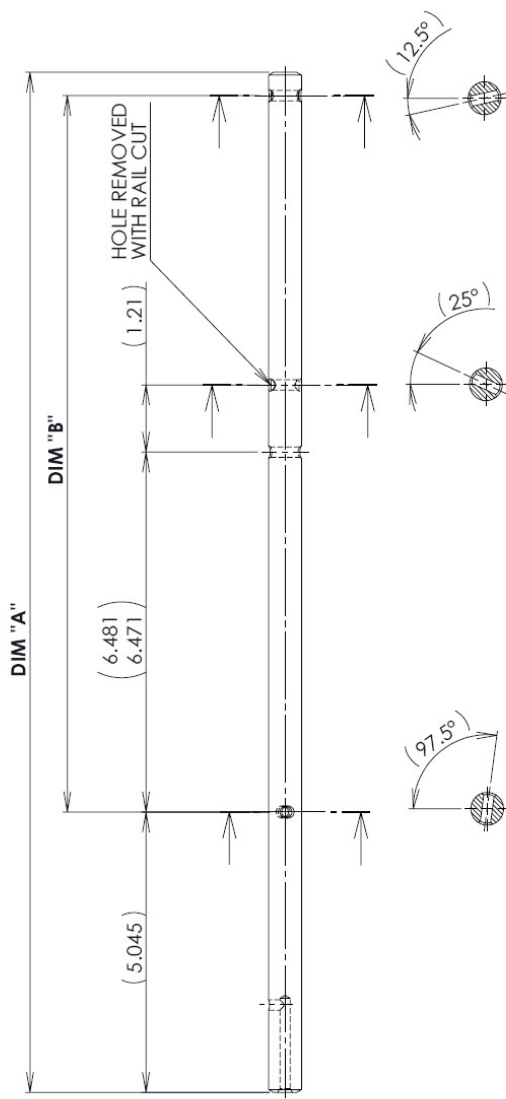
GRIND SHIFT RAIL ENDS TO MATCH SHAPE OF OFFSET LEVER





SEQUENCE OF MODIFICATION:

1. PIN LEVER TO RAIL WITH 3/16 ROLL PIN AS SHOWN.
2. DRILL THRU LEVER PILOT HOLE AND RAIL FOR 3/16 ROLL PIN. CARBIDE DRILL BIT MUST BE USED TO DRILL HOLE THRU HARDENED STEEL SHIFT RAIL. REMOVE FIRST ROLLPIN AND LEVER FROM RAIL.
3. CUT RAIL AND REMOVE SECTION AS SHOWN.
4. TRIM AND CHAMFER BOTH RAIL END CUTS TO MATCH CONTOURS OF LEVER.
5. INSTALL BOTH ROLLPINS, LEVER, AND SHIFT RAIL PIECES DURING FINAL ASSEMBLY OF TRANSMISSION. SEE INSTALLATION INSTRUCTION MANUAL FOR DETAILED STEP BY STEP ASSEMBLY PROCEDURE.



RAIL WITH HOLE POSITIONS BEFORE MODIFICATIONS

APPLICATION	RAIL	DIM "A"	DIM "B"
LT (-016)	1386-100-007	22.28	16.81
LS (-020,-017)	1386-100-007	22.28	16.81
A/M (-011)	1386-100-012	19.54	14.06
V/PER (-018,-2062)	1386-100-008	18.38	12.89