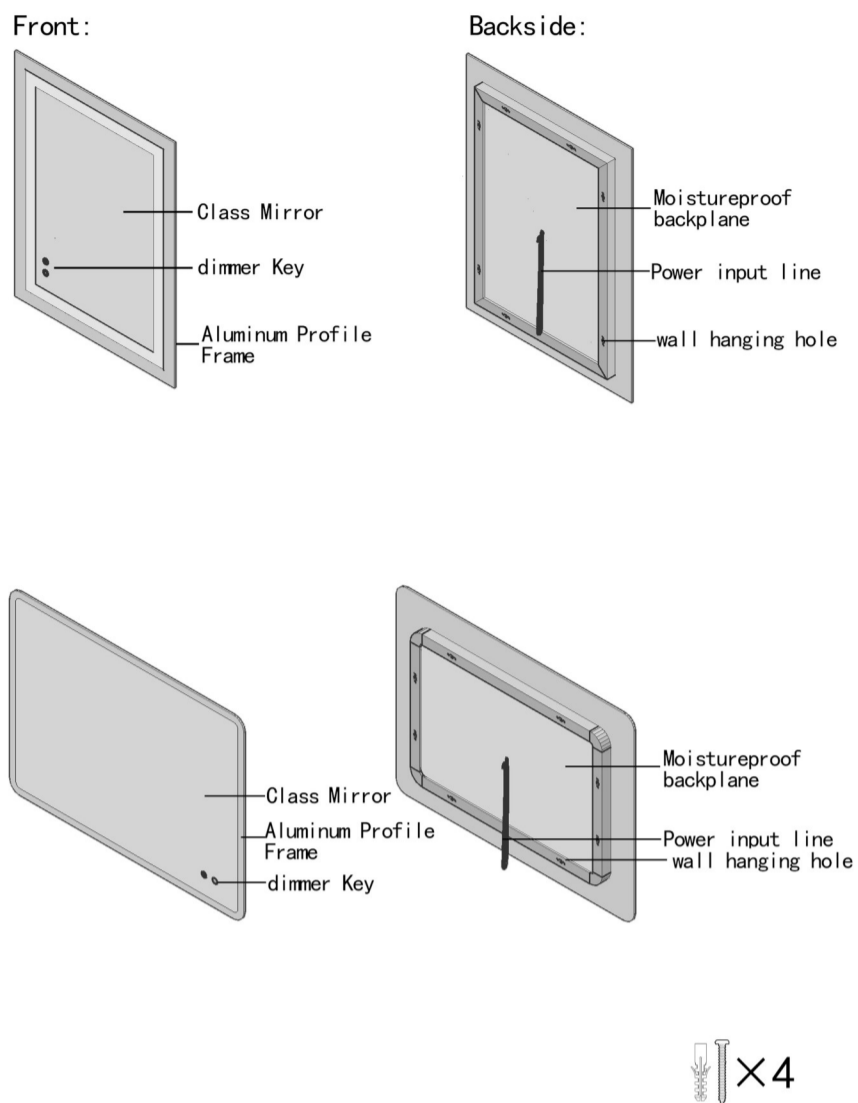
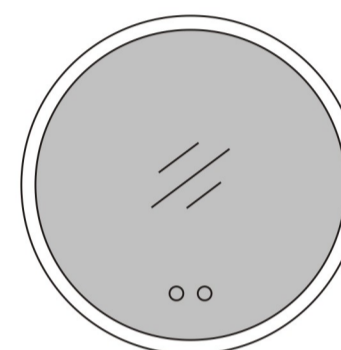
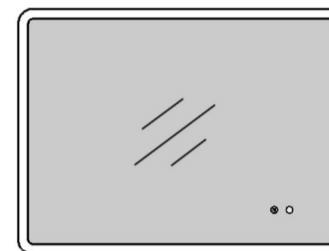
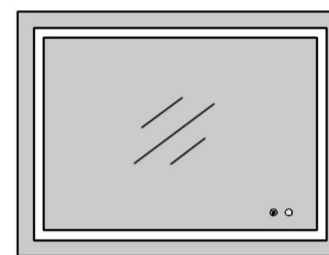


## Sketch of Product Appearance Structure



## Instructions for Installation and Use of LED Smart Mirror



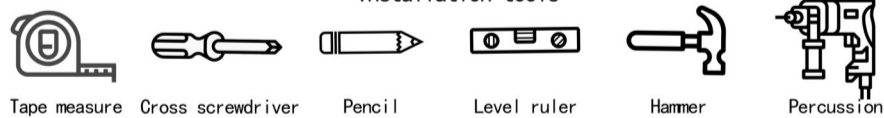
MADE IN CHINA

### Installation instructions

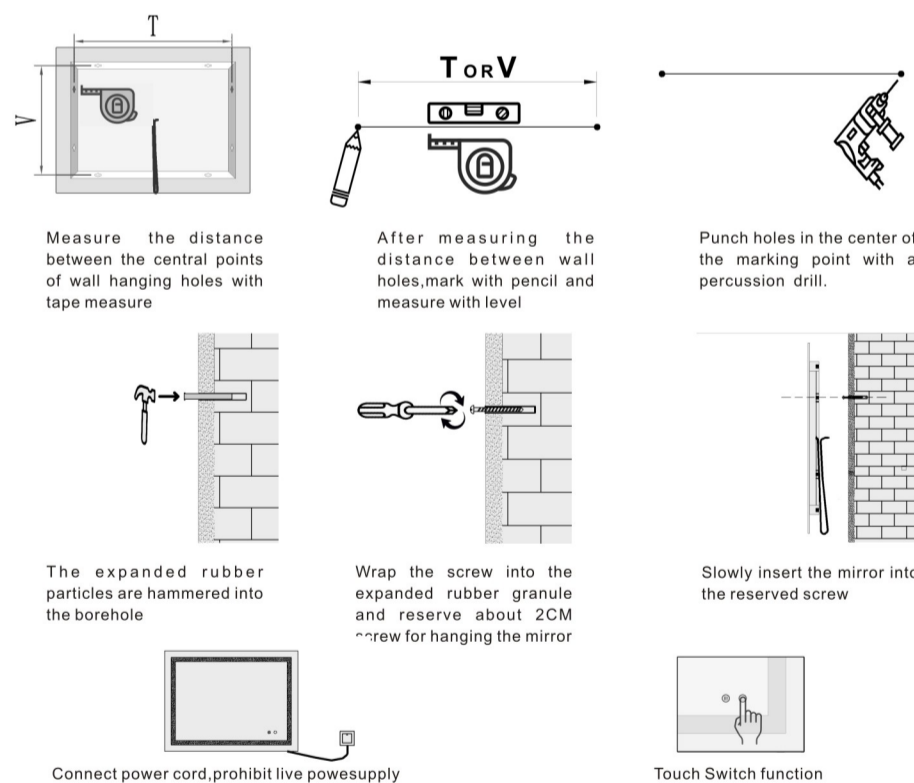
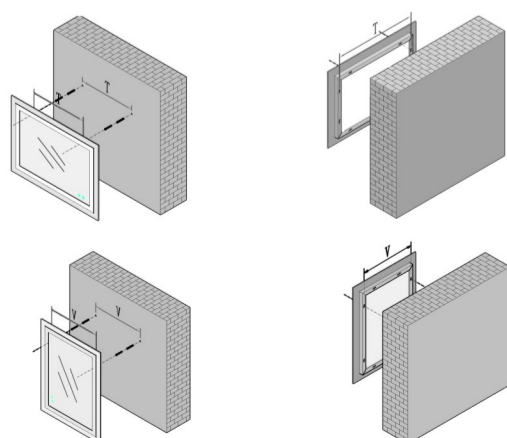
This product must be installed by professionals. Before installing the product, please read the installation steps and precautions carefully to ensure safe and correct operation.

- Before the mirror is installed, please handle it carefully. If the mirror edge is damaged or the surface is scratched, the mirror will burst suddenly. It should be avoided. Misoperation causes damage to the mirror or causes danger when the mirror is dumped.
- Before installation, please check whether the wall can support the weight of the mirror, and then measure the size of the central position between the wall jacks on the back of the mirror with tape measure.
- After determining the size of the wall clip on the back of the mirror, measure the size on the wall with tape measure, mark with pencil, and then use level to ensure that the marking points reach horizontal balance.
- Punch holes in the center of the marking point with percussion drill, then hammer the expanded rubber particles into the holes drilled, and then screw the screw into the expanded rubber particles with screwdriver. The screw does not need to be completely screwed in. Reserve about 2CM screw from the wall to hang the mirror.
- Connect the mirror drive power supply "input" two power lines with the municipal zero line and the fire line through the wiring terminals respectively, requiring strong connection, otherwise the mirror may not be connected. Can work normally or have potential safety hazards.
- Finally, slowly insert the mirror into the reserved screw to ensure that all wall-hanging jacks have been inserted into the screw. Figure
- When cleaning mirror surface, strong corrosive detergent should not be used. It is suitable for soft cloth wiping.

#### Installation tools



### Horizontal or Vertical installation



### Guide to the Use of LED Smart Mirror Touch Switch

- This switch is an isolated touch-sensitive switch.
- Touch switchboard is designed with logo display background light and on-off status indicator background light. Background light and touch switch are integrated. When the power supply and switch are connected, the background light on the switch board will be lit after the power supply is powered on. Logo display background light is long white and on-off status indicator background light is blue. When the human body first touches the light, the background lamp changes from white to blue, and when the light is turned off again, the background lamp changes from blue to white and circulates in turn.
- Touch switch function: the first touch white light, the second touch warm light, the third touch full light, the fourth touch all-off, long press can achieve endless dimming function, cycle in turn. Click another button, the mirror can heat up and defog.

### Matters needing attention

- After opening the package, please check whether the product is damaged or not. If you have any questions, please contact our company.
- The product requires 220V input voltage, beyond which the product will not work properly or be damaged.
- In any case, the product can not be covered by thermal insulation pads or similar materials, otherwise the product will be damaged.
- The power supply must be cut off before the installation of the product. The power supply can be connected only after the correct installation of the product is confirmed.
- When the product is installed and lighted by electricity, it must not use electric tools without grounding. Surges, harmonics and starting voltages caused by the grounding motor will pollute the products whose power supply will damage the working state under high voltage.