

9

Surface Bear Series - 30x40 Inches. - \$5195 -

Part of the Surface Bear Series, the blue fade and details will keep your eye moving a different way each time. Nothing like this one.

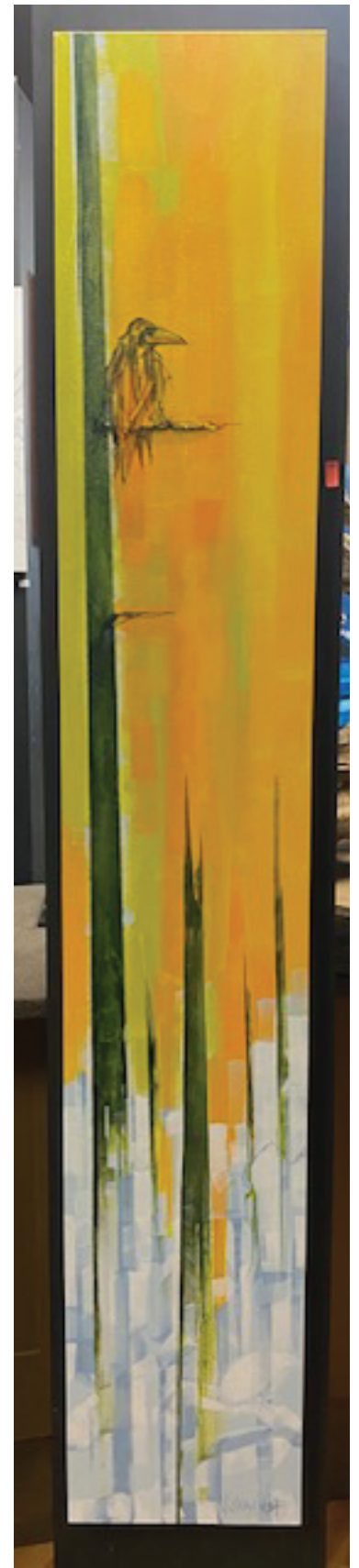


# 10

Mt. Tantalus - 48x60 Inches. - \$7900 -

This view pops out for a couple of seconds as you drive north to Squamish. The details in this piece have to be seen to be fully appreciated. Signature linework throughout.





11

Solace- 10x60 Inches. - \$1695 - No prints will be made of this image.

A graphic piece that will fit into a non-traditional spot nicely. This one is hard to photograph. The trees coming through the clouds look really cool.



12

Powderhoud Series - 24x24 Inches. - \$1495 - No prints will be made of this image.

This gestural ski piece is all about the confident line work. Aiming to capture the moment of hitting a pillow. These days it feels bottomless.

# 13

Powderhous Series - 18x24 Inches. - \$995 - No prints will be made of this image.

This gestural ski piece is all about the confident abstract line work. Aiming to capture the deepest part of the turn. These days it feels bottomless.



# 14

Cloudburst - 36x72 Inches. - \$4195 -

The view looking north from the Highlands. Cloudburst Mountain is one of the most interesting looking mountains. It stands all alone. This monotone piece will confidently hold any room. Make a statement with these bold blues.





**15** Blueberry to Blackcomb series -36x48 Inches. - \$3795 -

I have a lot of art in the Blueberry subdivision in Whister. This is the view coming back down into the valley. Cold and crisp, lots of energy in this piece.

# 16

Indy - 16 x20 Inches. - \$995 - No prints will be made of this image.

A fun little snowboard study. Fun fact, I have been snowboarding for almost 30 years, but i tend to paint skiers. Backside Indy.





# 17

T002C1 "Rocky" - 48x60 Inches. - \$9400-

This Orca painting is truly special and needs to be seen live to fully appreciate. The textures and and contrasts will keep your eyes moving around continuously.



