

Krawatte - RT 2x Stoff  
30, 38, 41, 42, 44, 46

hintere Mitte

Krawatte - RT 2x Stoff  
30, 38, 41, 42, 44, 46

2x 1 cm einschlagen

5/1

5/2

5/3

5/4

5/5

2x 1 cm einschlagen

6/1

6/2

6/3

6/4

6/5

Krawatte - Garterlx  
30, 38, 41, 42, 44, 46

Stoffbruch

7/1

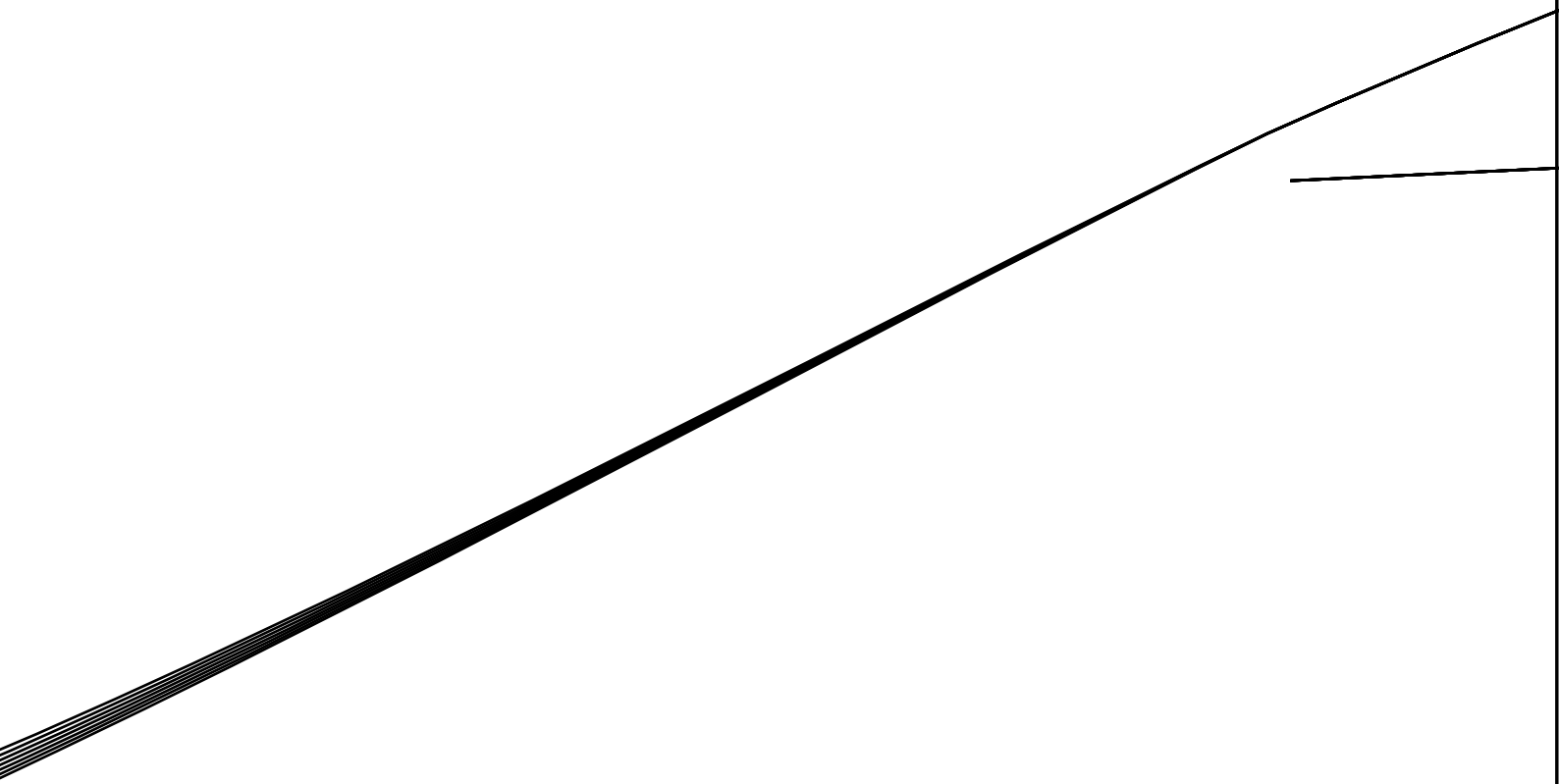
7/2

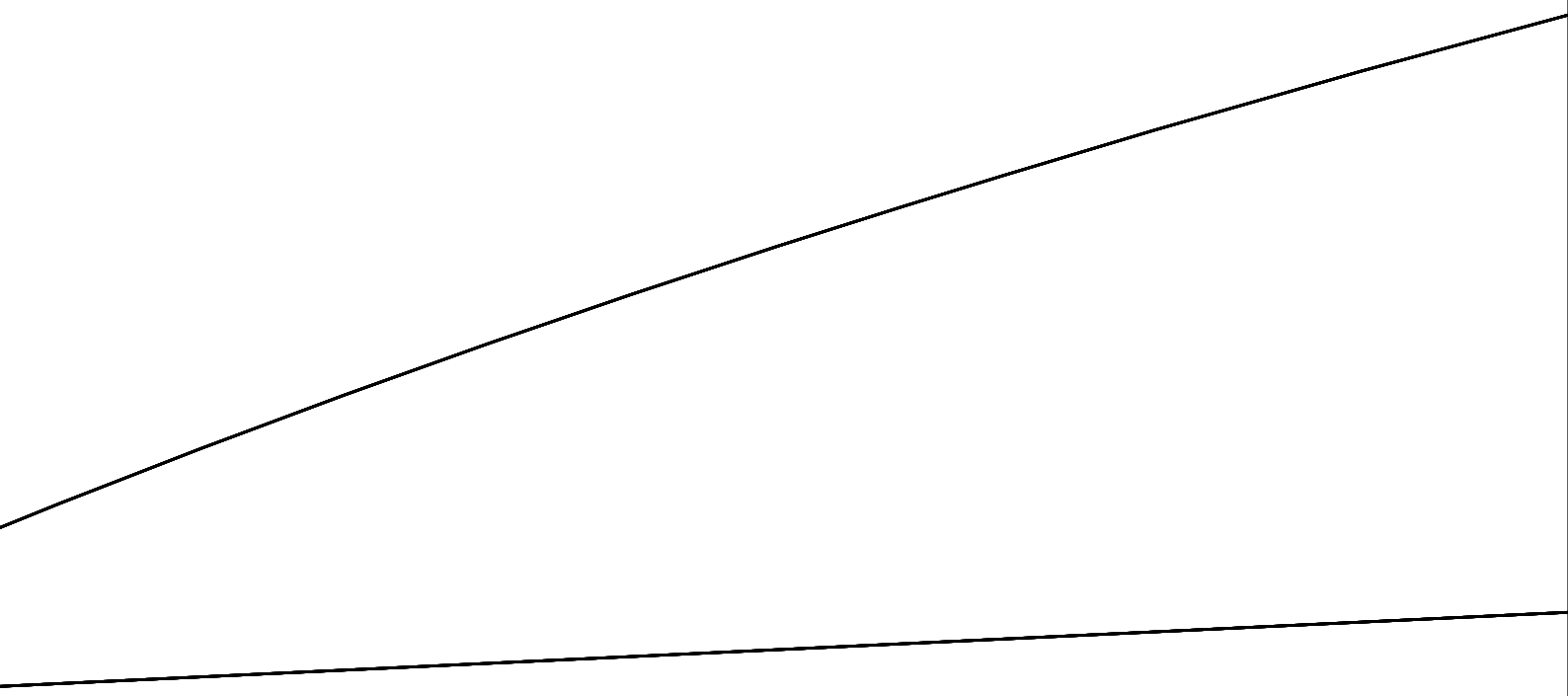
7/3

7/4

7/5



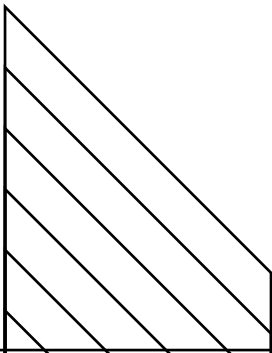
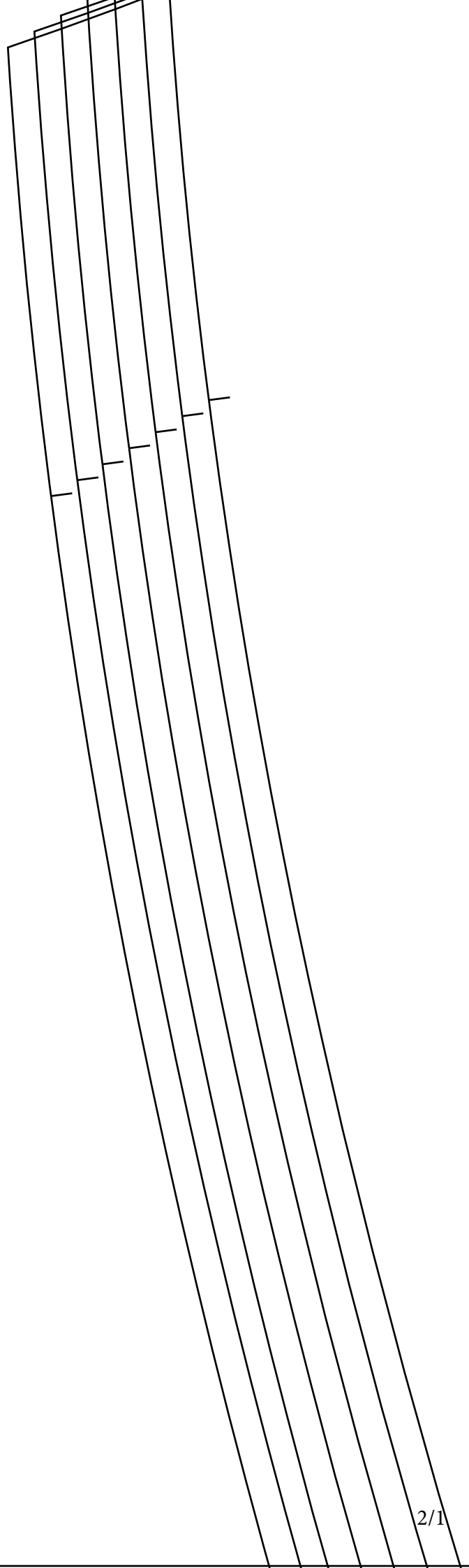




vordere Mitte



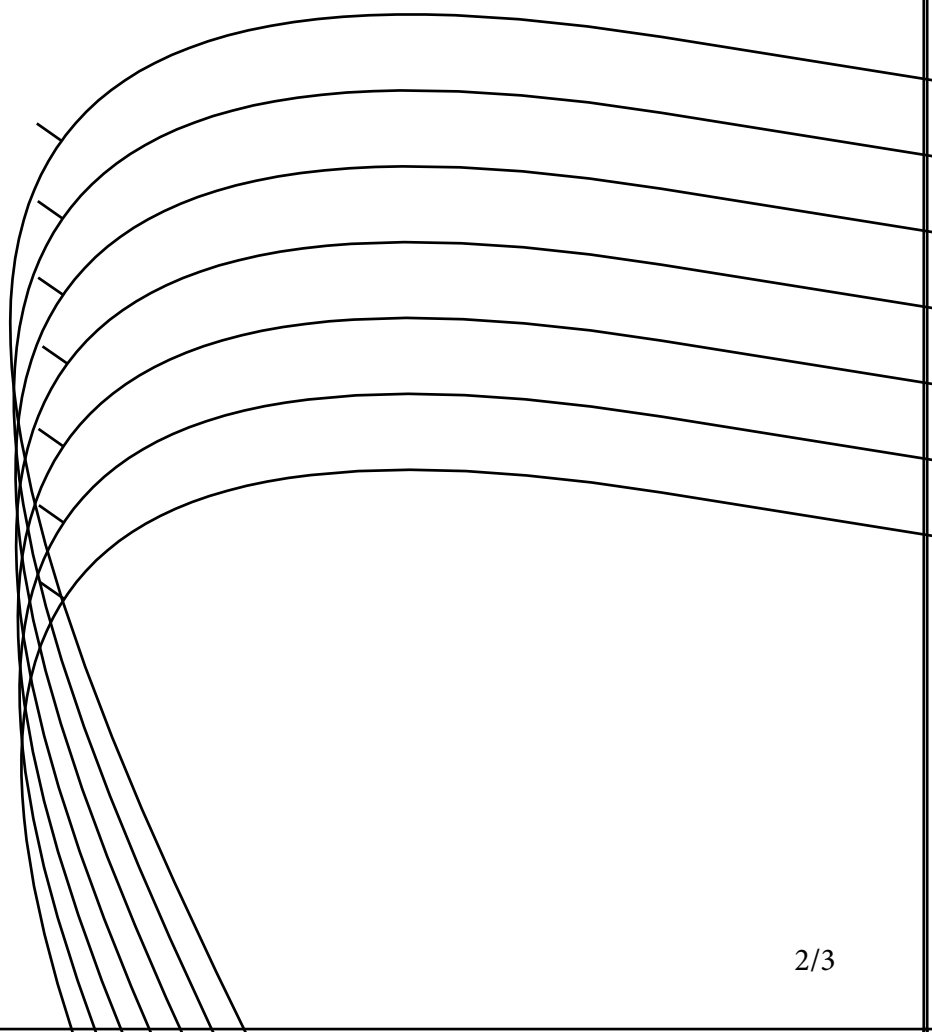
Ein schlägen

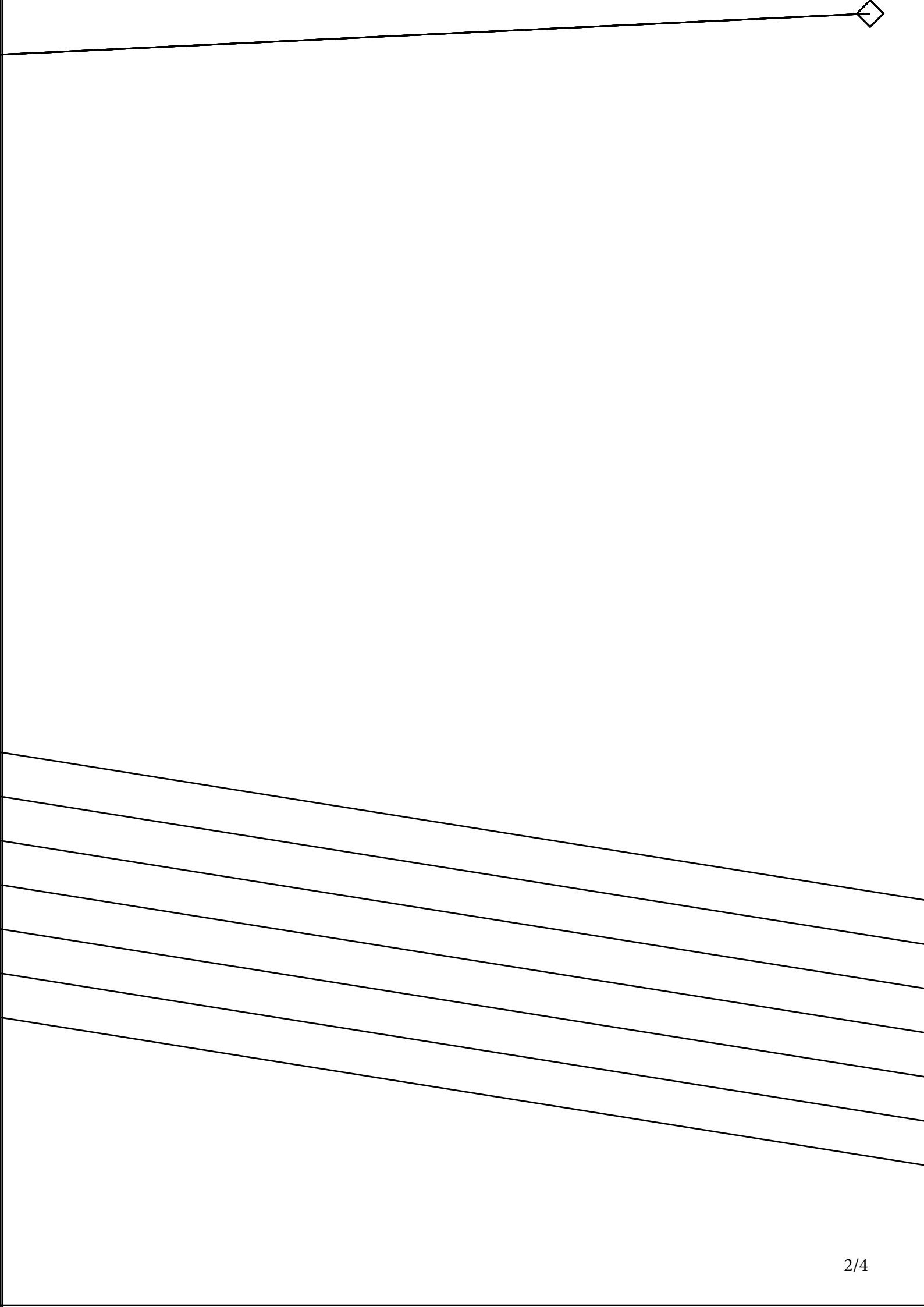


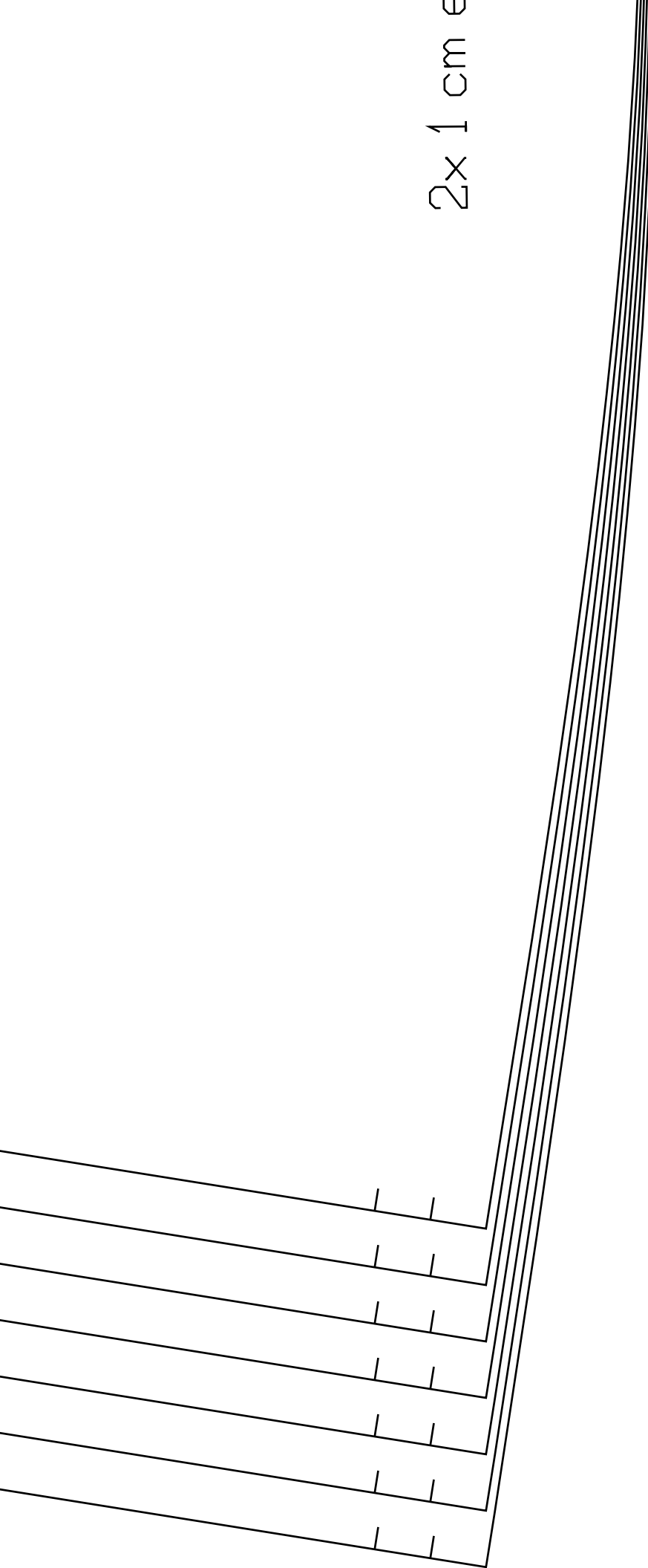




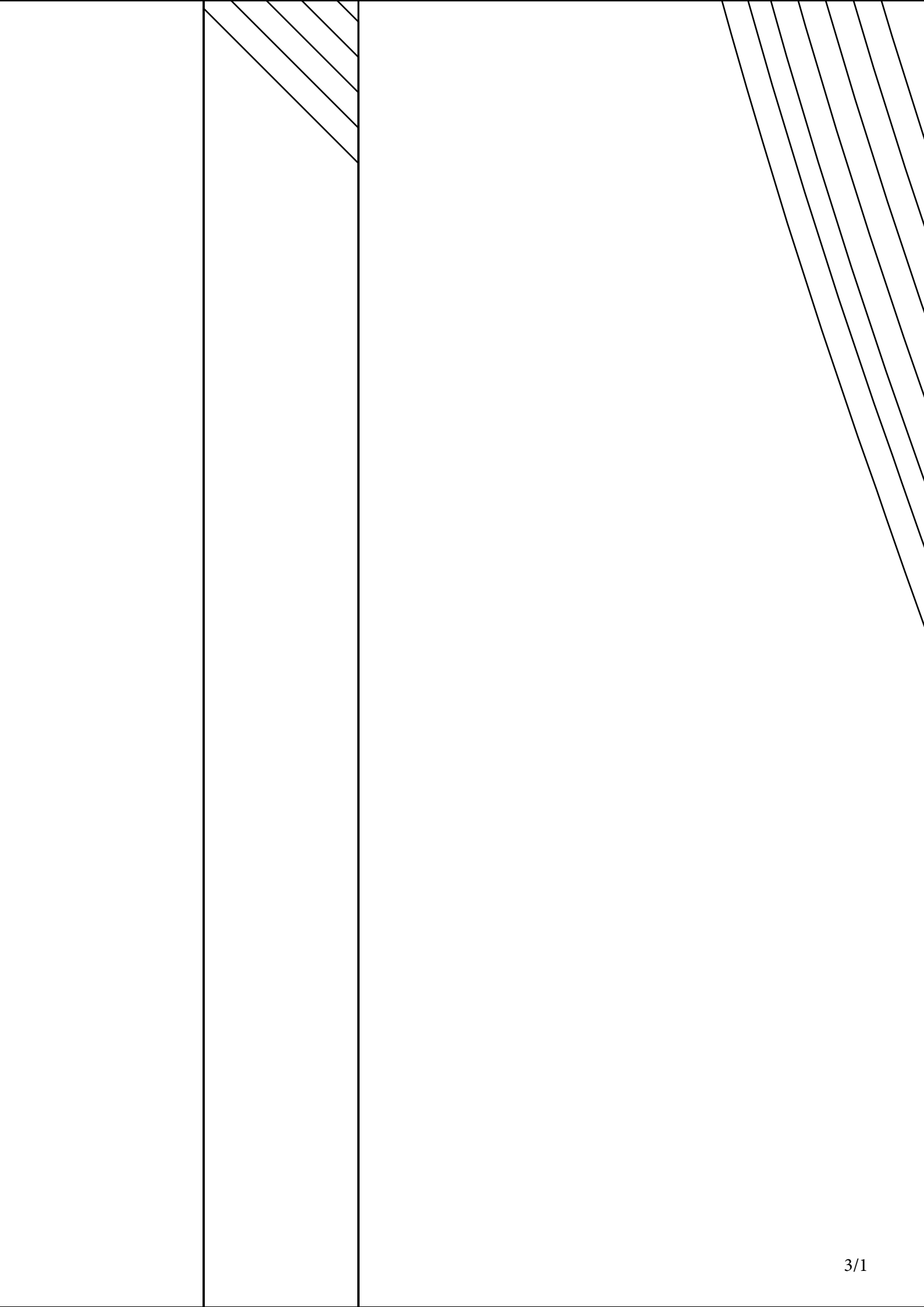
Kimonojacke - Vorderteil  
2x Stoff - 34, 36,  
38, 40, 42, 44, 46

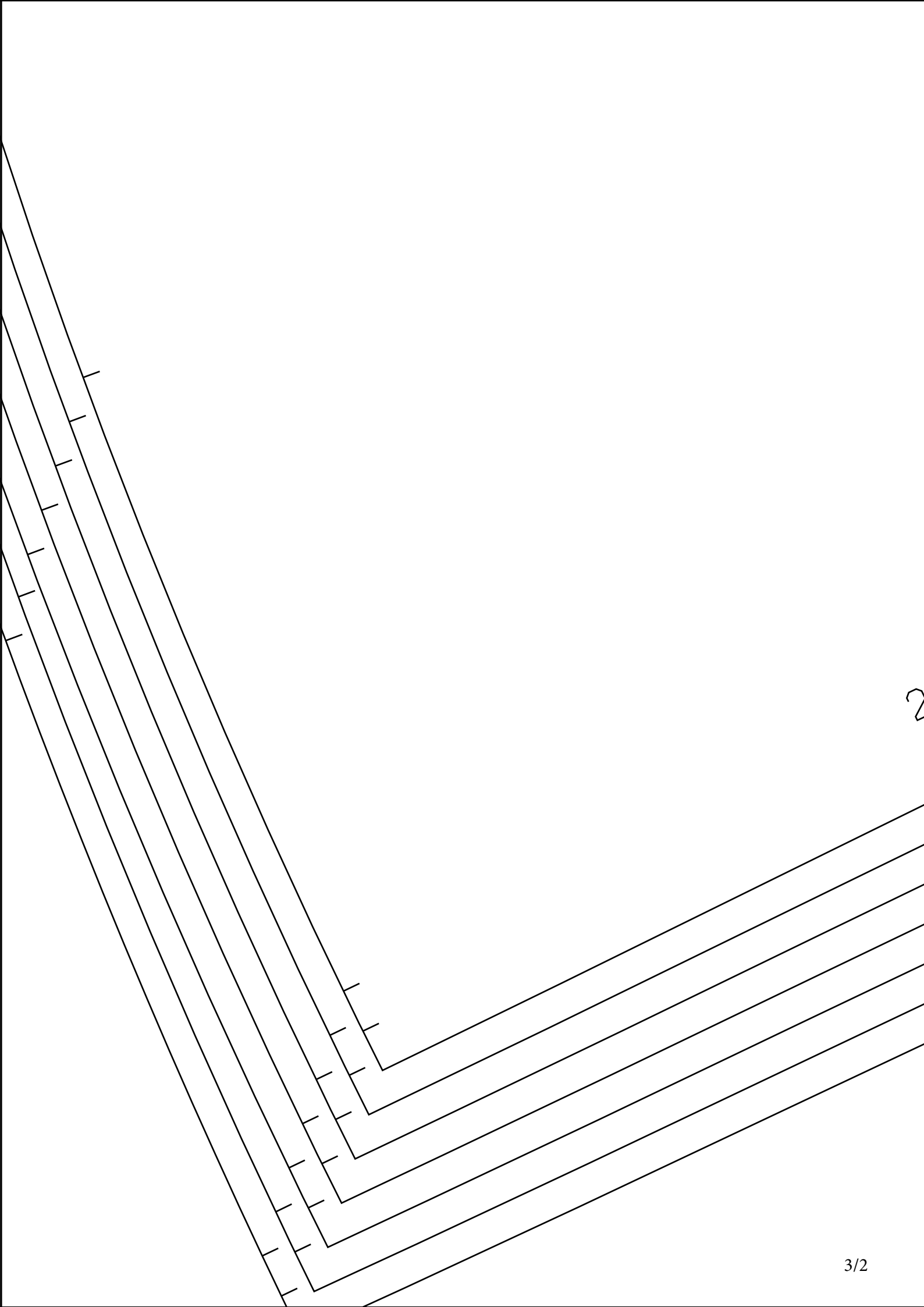






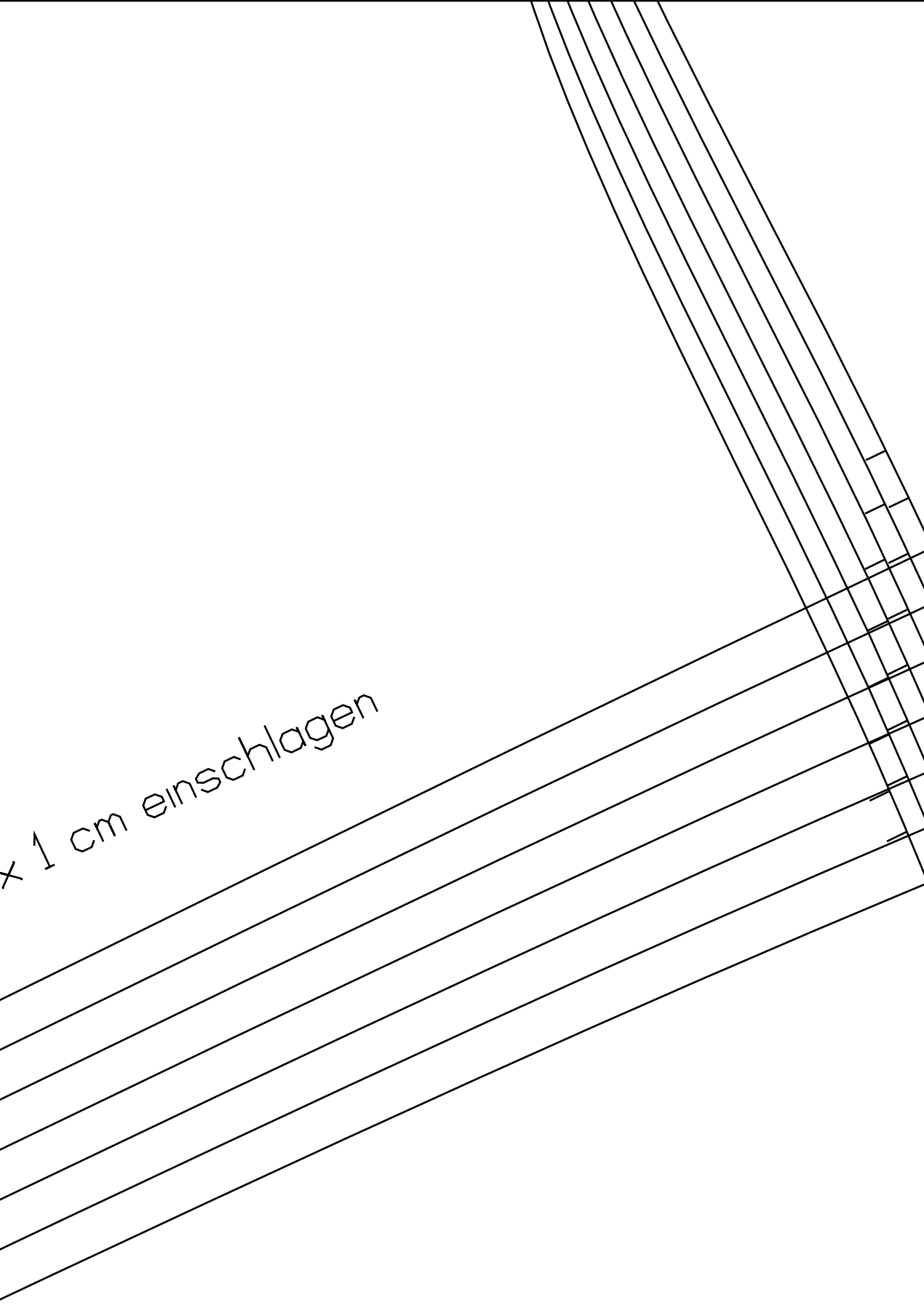
2x 1 cm e





2

\* 1 cm einschlagen





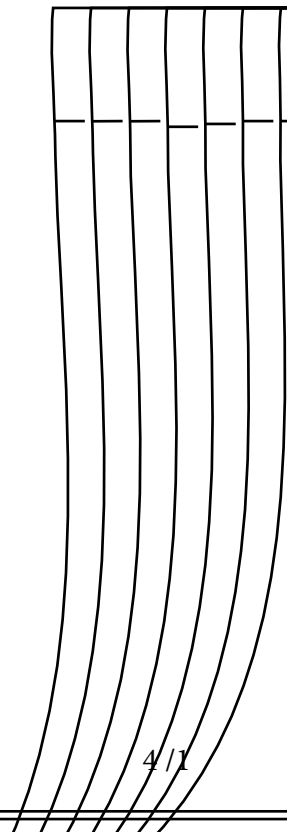




Kimonojacke - Paspelstreifen

2x Stoff - 34, 36,

38, 40, 42, 44, 46

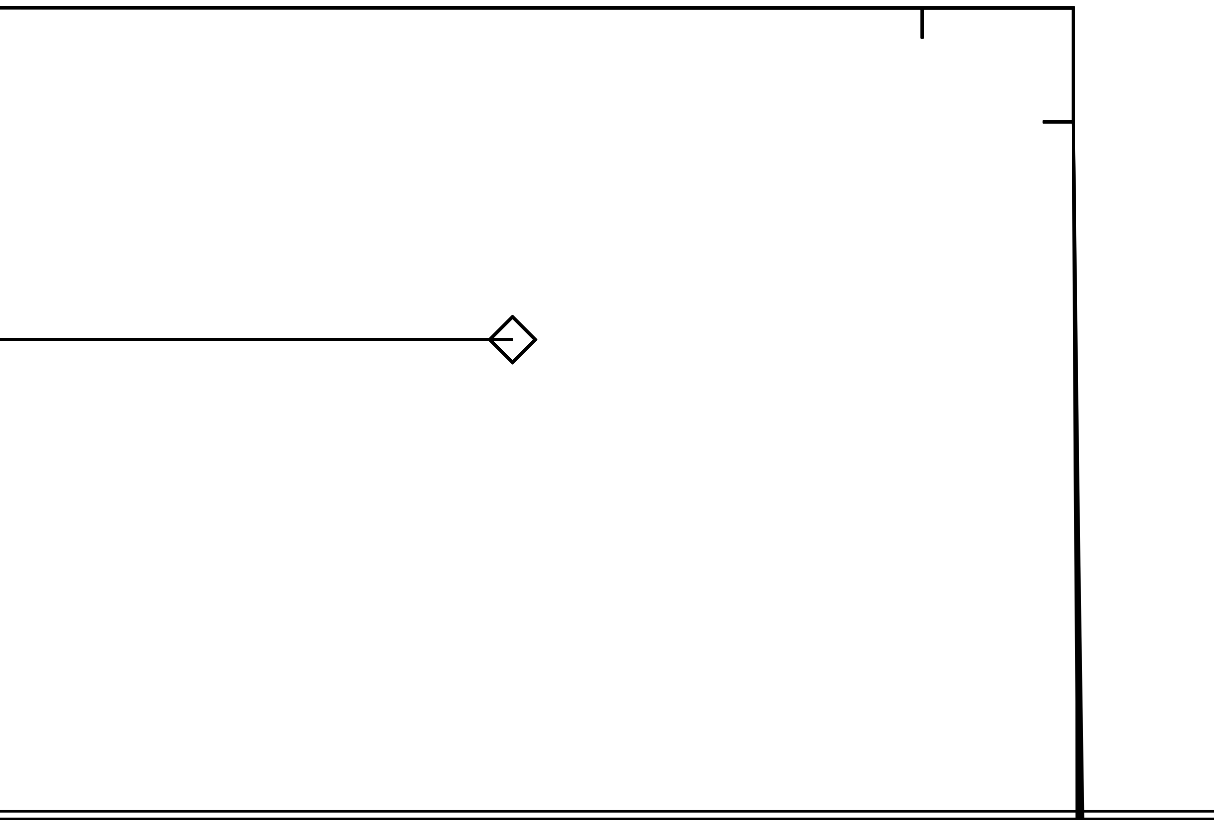


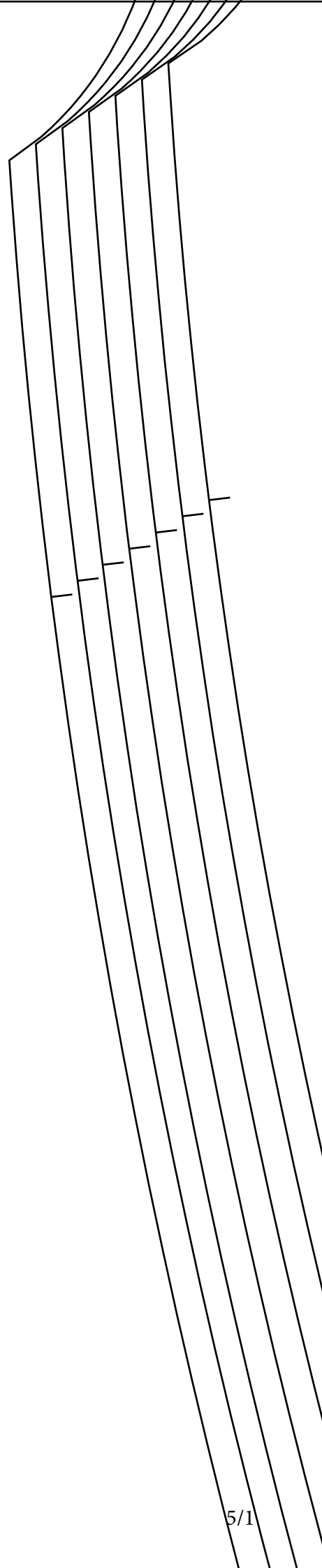


hintere Mitte





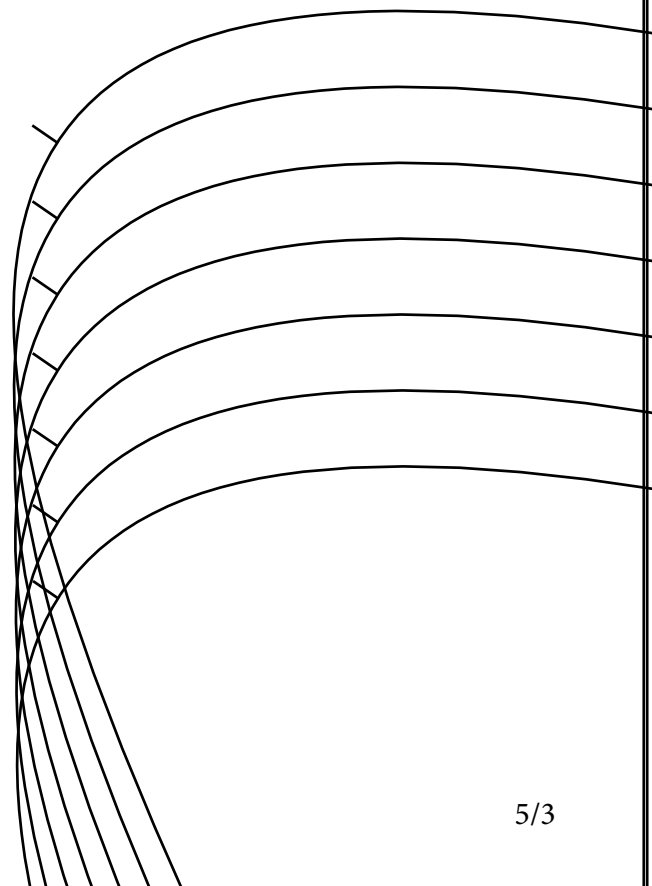


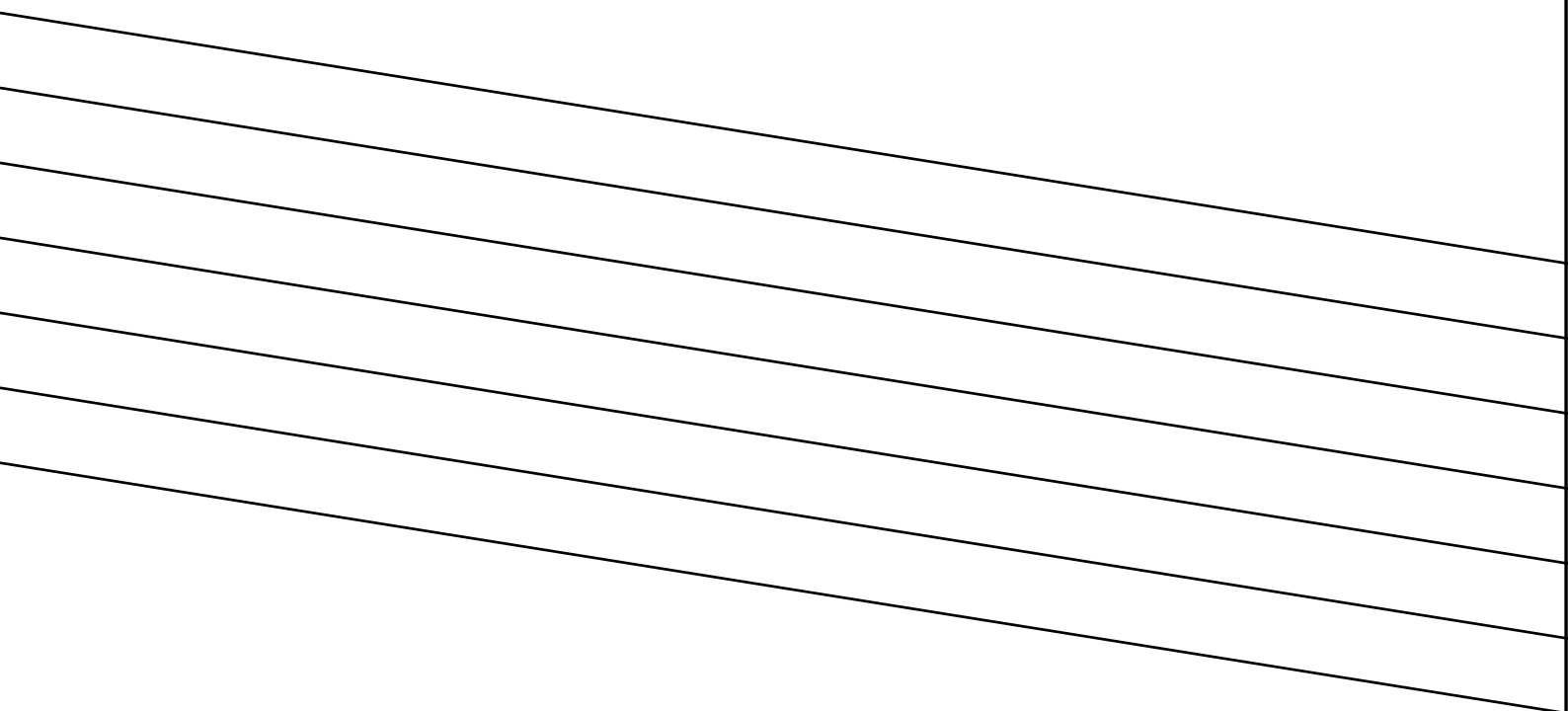




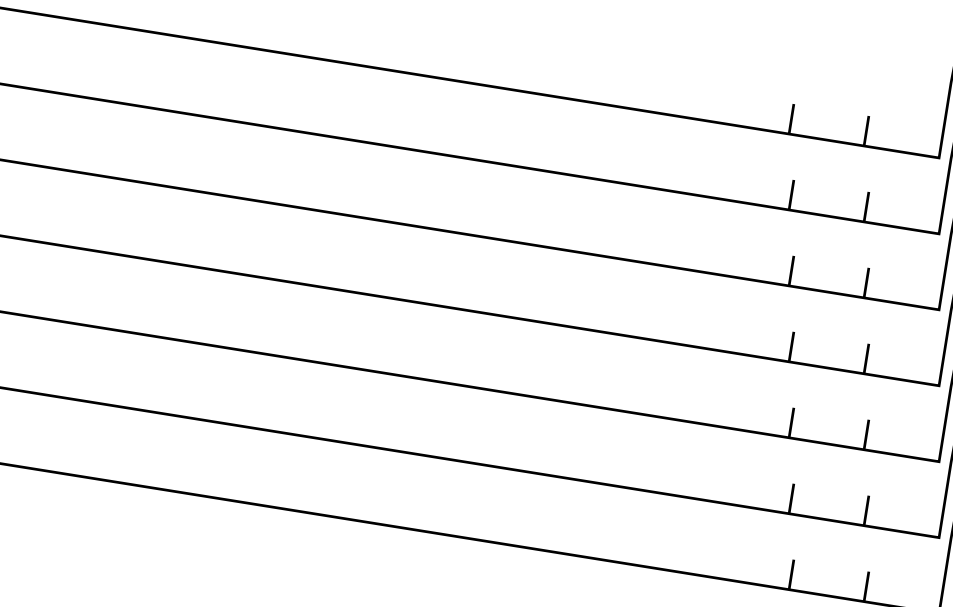


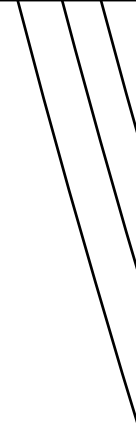
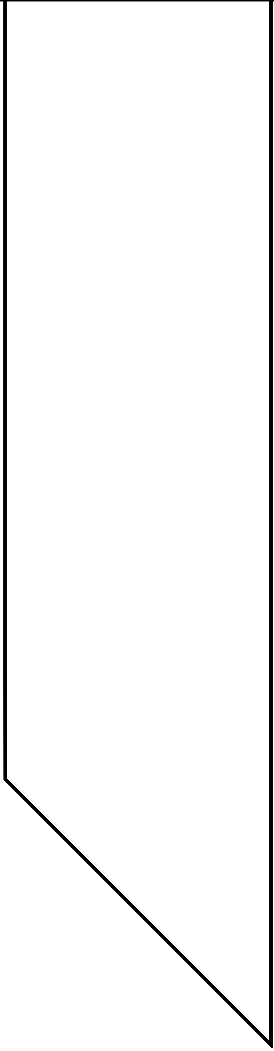
Kimonojacke - RT 2x Stoff  
- 34, 36, 38, 40, 42, 44, 46

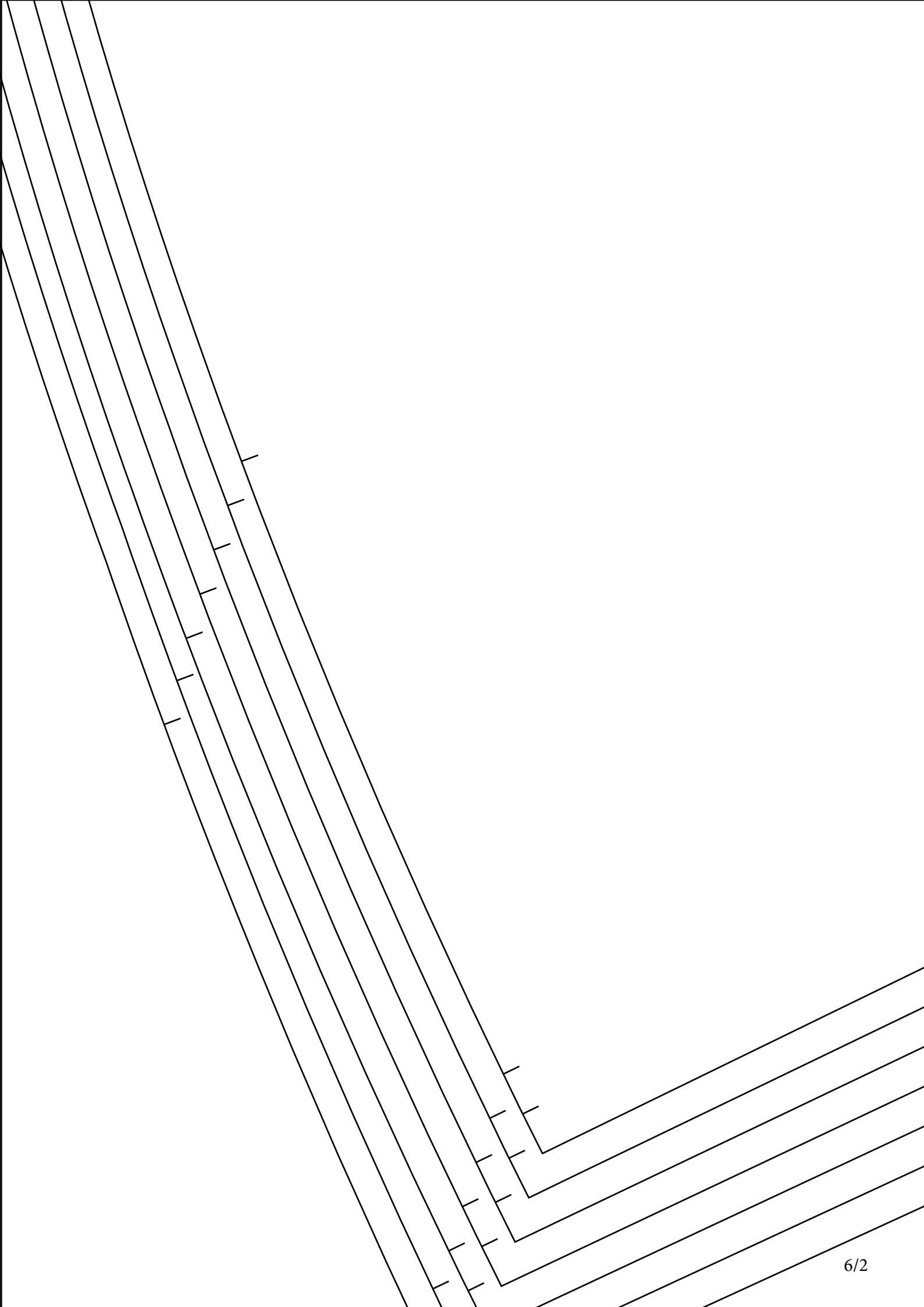




2x 1 cm einschlagen







2x 1 cm einschlagen







--	--	--	--	--	--	--





Kimonojacke - Guertel 1x  
Stoff, 1x Einlage - 34,  
36, 38, 40, 42, 44, 46



Stoffbruch