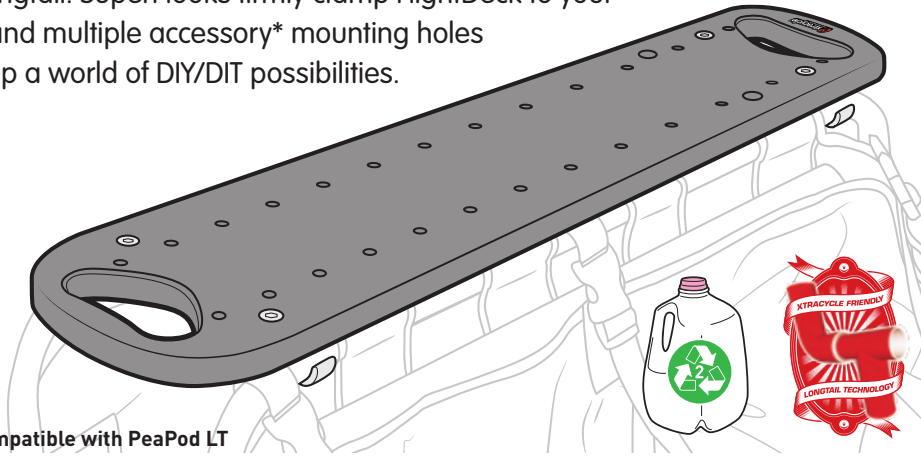


FlightDeck™

SUPERHOOKS™

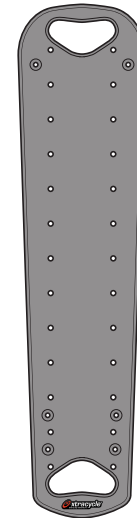
Recycled, All-Weather, Practical.

Sturdy, strong and nearly indestructible, FlightDeck opens a world of possibilities. Made of 100% recycled HDPE (think milk jugs) plastic, this deck will last the life of your longtail. SuperHooks firmly clamp FlightDeck to your racks and multiple accessory* mounting holes open up a world of DIY/DIT possibilities.

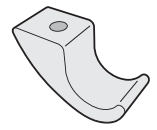


* Compatible with PeaPod LT

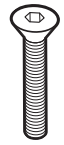
The Bits 'n Pieces



FlightDeck (1)



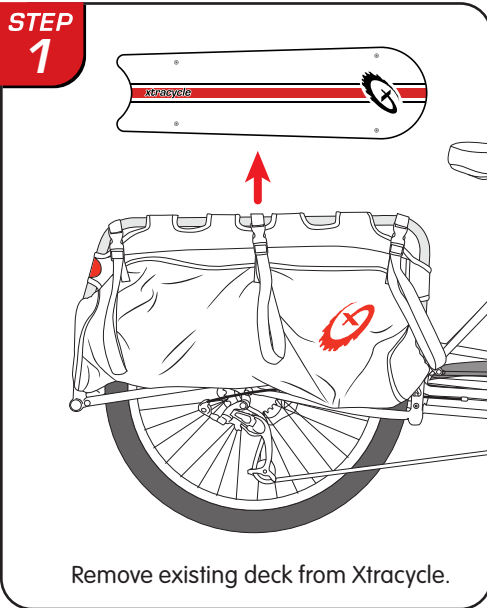
SuperHook (4)



40mm
Countersink
Bolt (4)

Tools Needed:
4mm Allen Key
CamStrap/Belt or
Helping Hand
(aka a Friend)

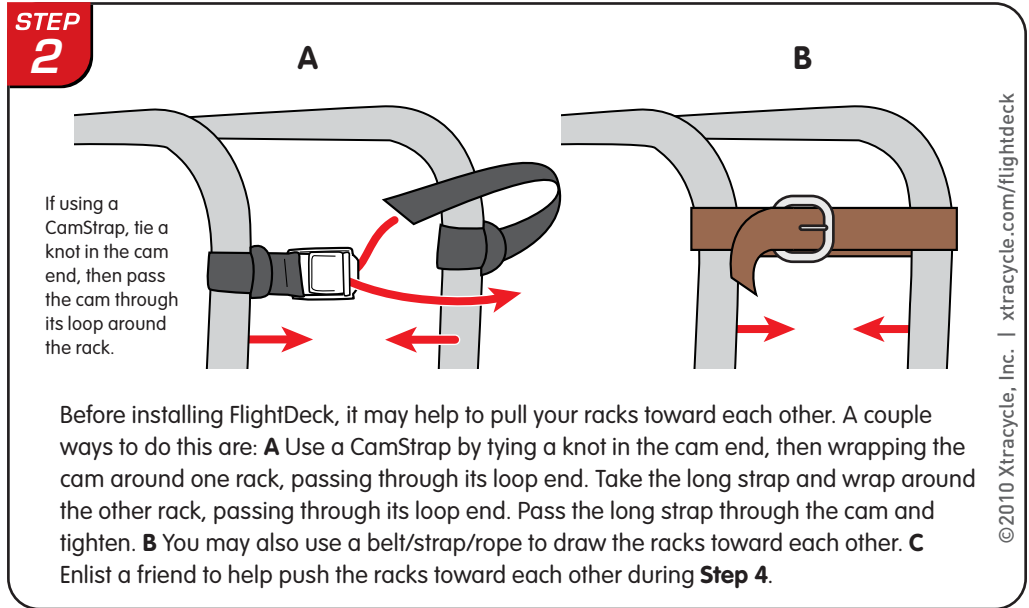
STEP 1



Remove existing deck from Xtracycle.

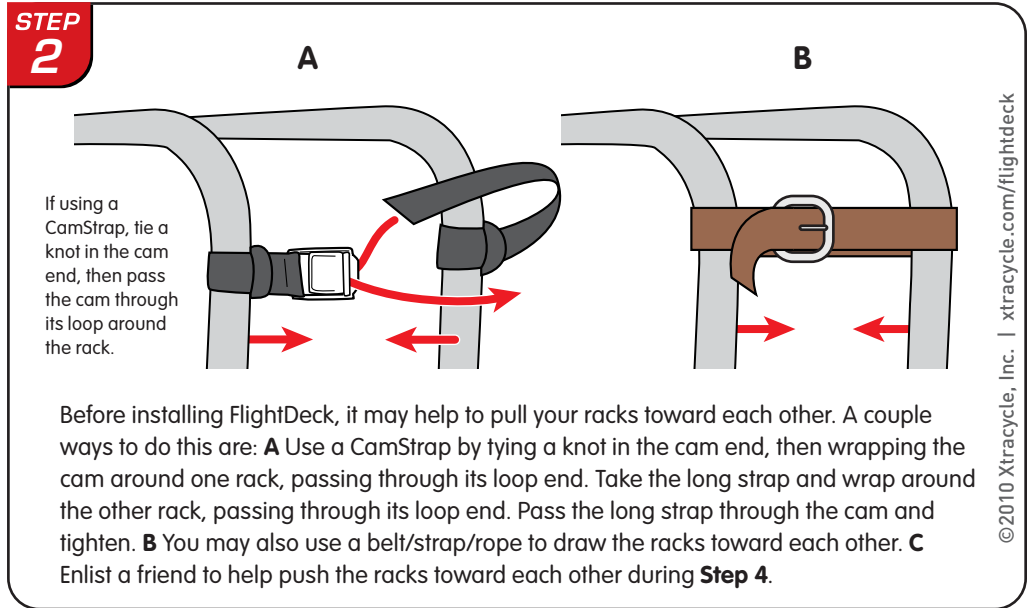
STEP 2

A



If using a CamStrap, tie a knot in the cam end, then pass the cam through its loop around the rack.

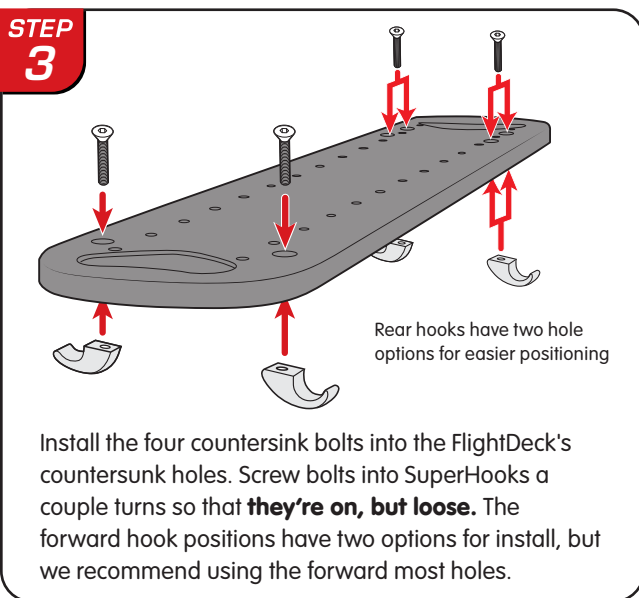
B



Before installing FlightDeck, it may help to pull your racks toward each other. A couple ways to do this are: **A** Use a CamStrap by tying a knot in the cam end, then wrapping the cam around one rack, passing through its loop end. Take the long strap and wrap around the other rack, passing through its loop end. Pass the long strap through the cam and tighten. **B** You may also use a belt/strap/rope to draw the racks toward each other. **C** Enlist a friend to help push the racks toward each other during **Step 4**.

© 2010 Xtracycle, Inc. | xtracycle.com/flightdeck

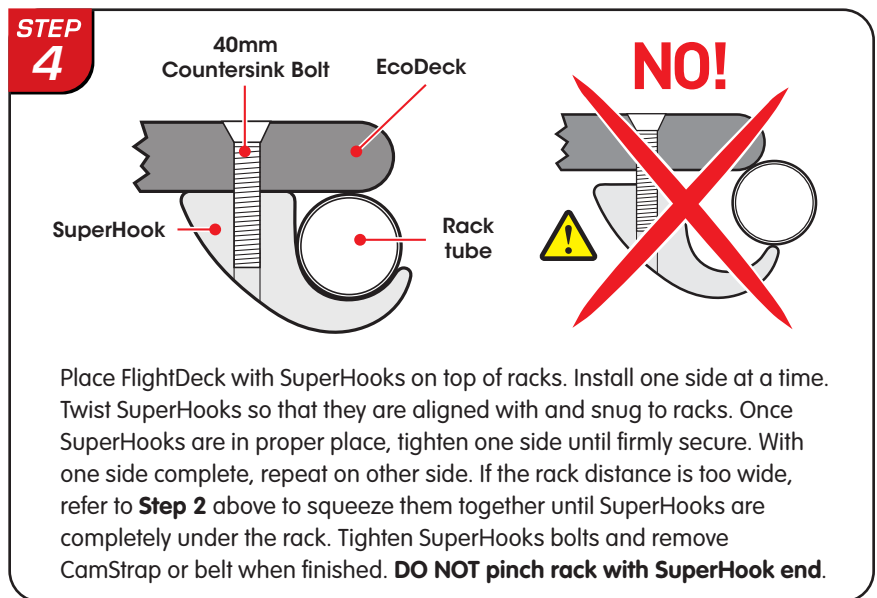
STEP 3



Rear hooks have two hole options for easier positioning

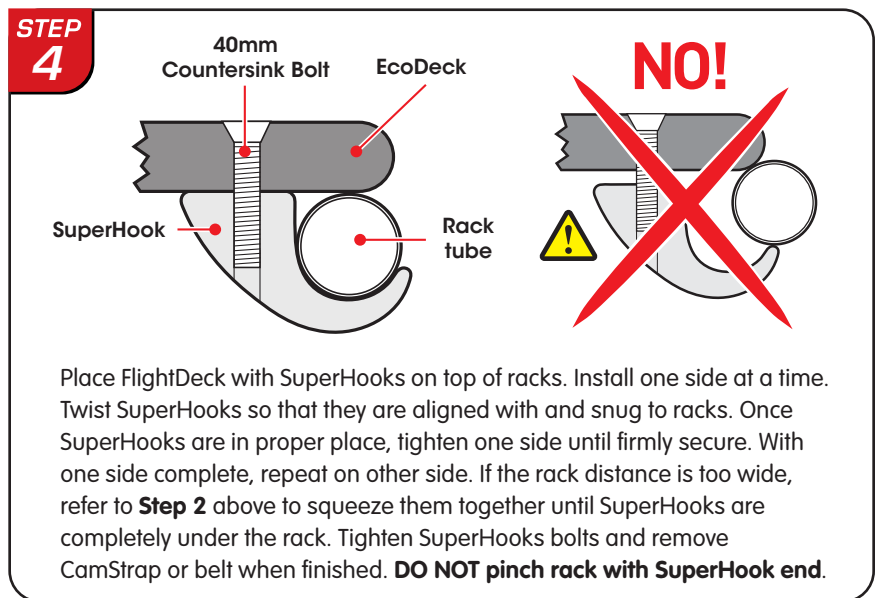
Install the four countersink bolts into the FlightDeck's countersunk holes. Screw bolts into SuperHooks a couple turns so that **they're on, but loose**. The forward hook positions have two options for install, but we recommend using the forward most holes.

STEP 4



40mm Countersink Bolt EcoDeck
SuperHook Rack tube

NO!



Place FlightDeck with SuperHooks on top of racks. Install one side at a time. Twist SuperHooks so that they are aligned with and snug to racks. Once SuperHooks are in proper place, tighten one side until firmly secure. With one side complete, repeat on other side. If the rack distance is too wide, refer to **Step 2** above to squeeze them together until SuperHooks are completely under the rack. Tighten SuperHooks bolts and remove CamStrap or belt when finished. **DO NOT pinch rack with SuperHook end.**