

# XTRACYCLE

## Edgerunner Swoop and Classic Rear Fender Stay Adaptation

**NOTE:** Only use these instructions when installing Fenders on the Edgerunner Swoop and Classic Models.

### STEP 1: Find the Rear Stay



Locate and remove the rear fender stays from their packaging.

### STEP 2: Clamp the Stay



Clamp one of the eyelets in a bench vise. Fold a shop-rag into the jaws if you're worried about cosmetic damage.

### STEP 3: Rotate the Strut



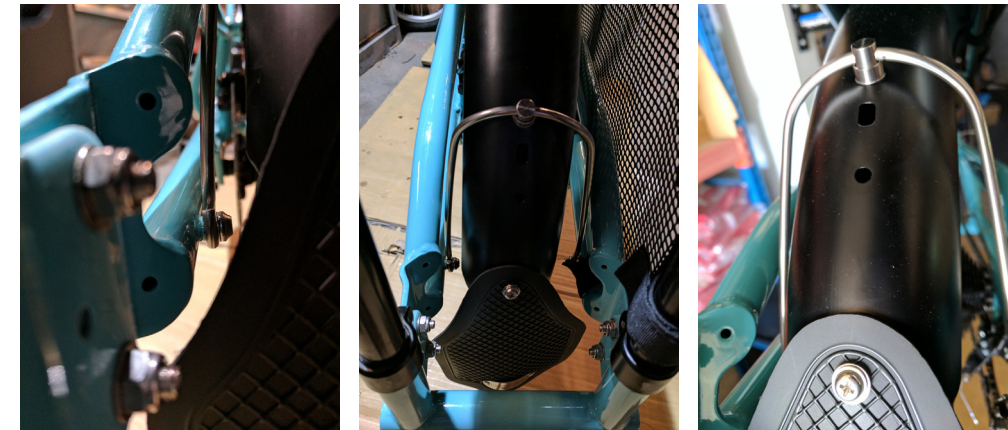
Rotate the strut 90 degrees.

### STEP 4: Repeat STEP 3



Repeat STEP 3 for the second strut.

### STEP 5: Install the Strut



Install the fender as per the instructions, but using the braze-ons located on the inside of the frame. **NOTE:** Make sure to use the top hole (of the 3 holes) on the rear Fender(3rd picture).

**Our mission:**  
To empower people with  
transformational tools that  
move the body and spirit.  
[www.xtracycle.com](http://www.xtracycle.com)

