

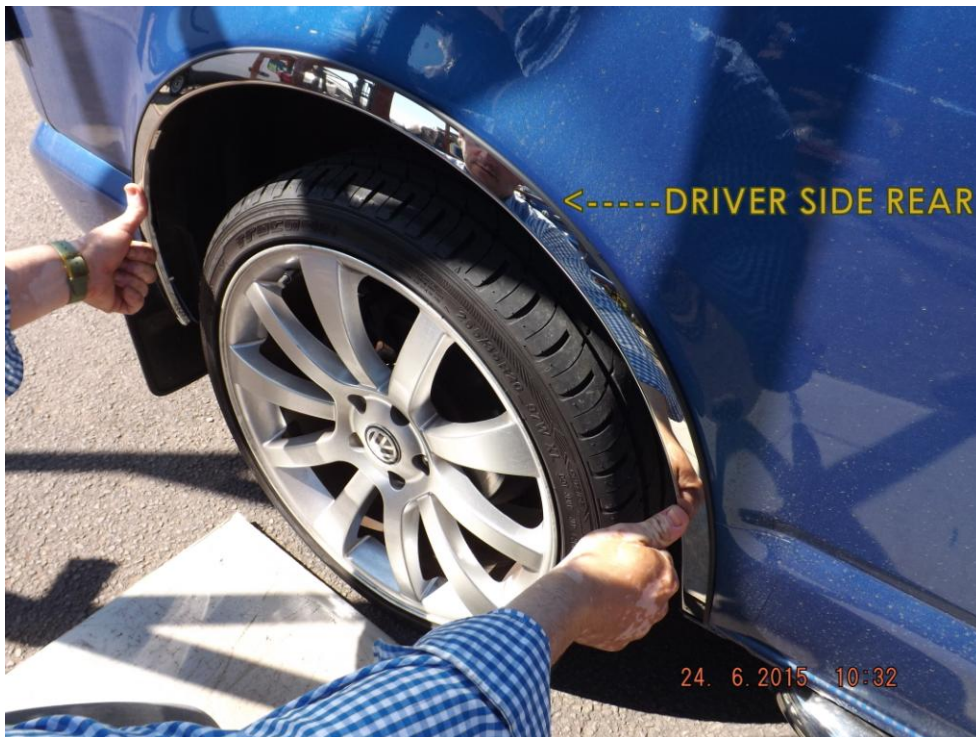


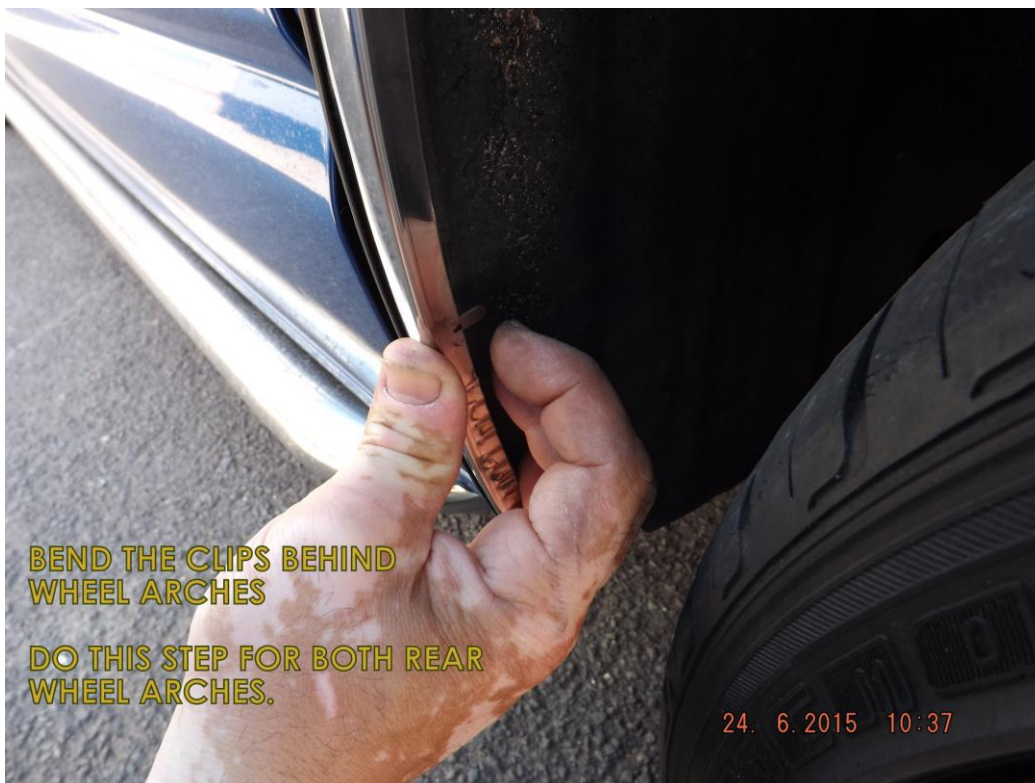
VW T5 WHEEL ARCH TRIMS

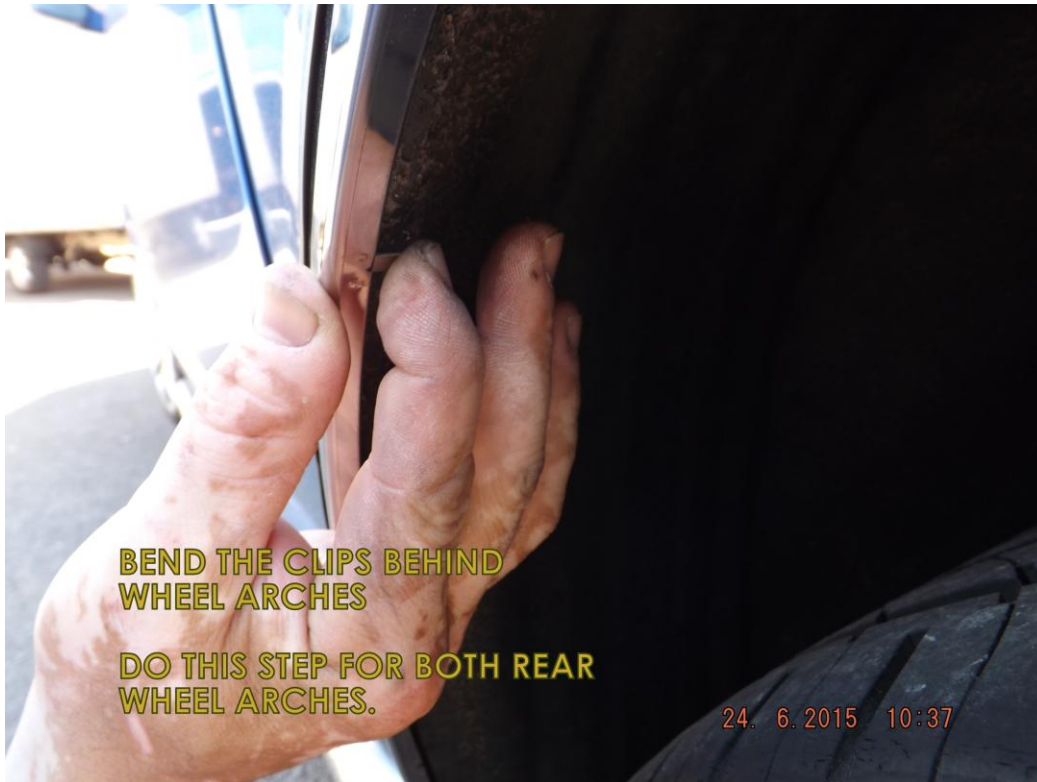
☎ 01782 280 888

FITTING INSTRUCTIONS

PLEASE ENSURE YOU REVIEW THE IMAGES CAREFULLY. THESE IMAGES WILL SHOW AND EXPLAIN HOW THESE WHEEL ARCHES CAN BE FITTED TO YOUR VEHICLE.







**BEND THE CLIPS BEHIND
WHEEL ARCHES**

**DO THIS STEP FOR BOTH REAR
WHEEL ARCHES.**

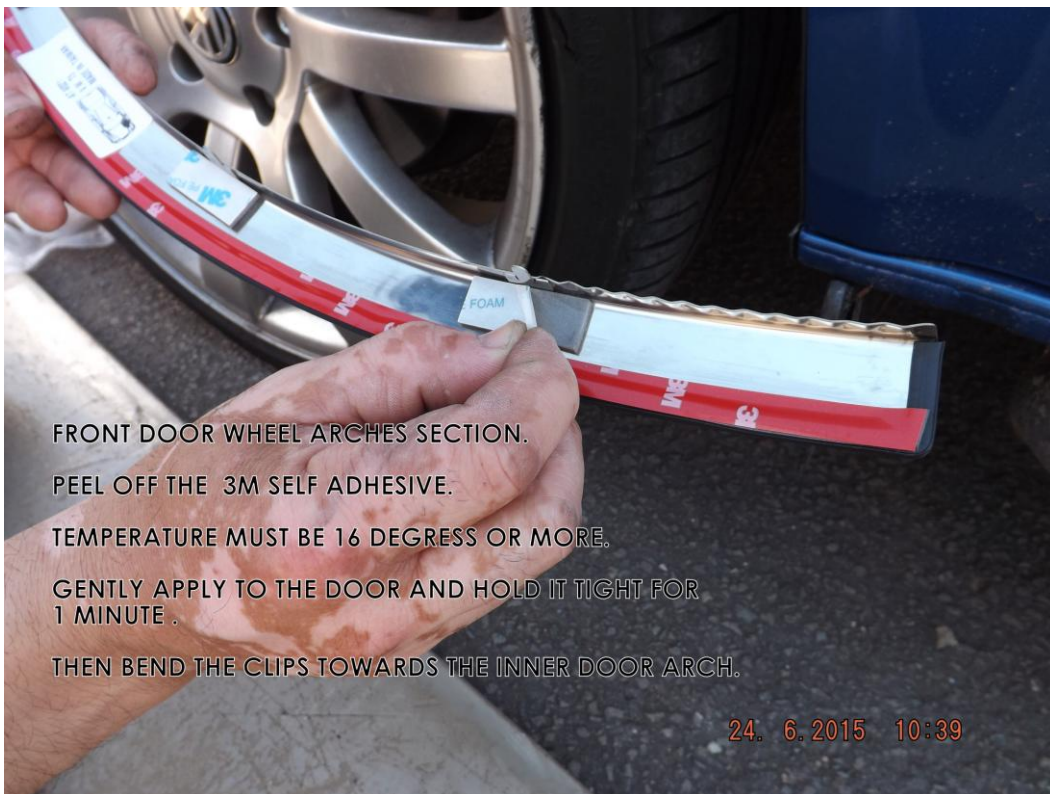
24. 6. 2015 10:37



**BEND THE CLIPS BEHIND
WHEEL ARCHES**

**DO THIS STEP FOR BOTH REAR
WHEEL ARCHES.**

24. 6. 2015 10:38







NOW ALL 3M TAPE IS OFF. YOU MAY USE THE
HOT AIR GUN OR HAIR DRYER TO HEAT THE GLUE.
YOU MUST HEAT THESE PARTS IN A WARM ENVIRONMENT.

24. 6. 2015 10:40



FRONT DOOR ARCHES

YOU WILL SEE A RUBBER ATTACHED TO THE FRONT DOOR ARCHES.

YOU NEED TO PULL THE RUBBER AWAY FROM THE DOOR SO YOU HAVE
ENOUGH SPACE FOR THE CLIP TO GO BEHIND THE RUBBER SEAL.

24. 6. 2015 10:40



THIS IMAGE SHOWS HOW THE FINAL FIXING OF THE FRONT DOOR ARCHES

24. 6. 2015 10:40



24. 6. 2015 10:41



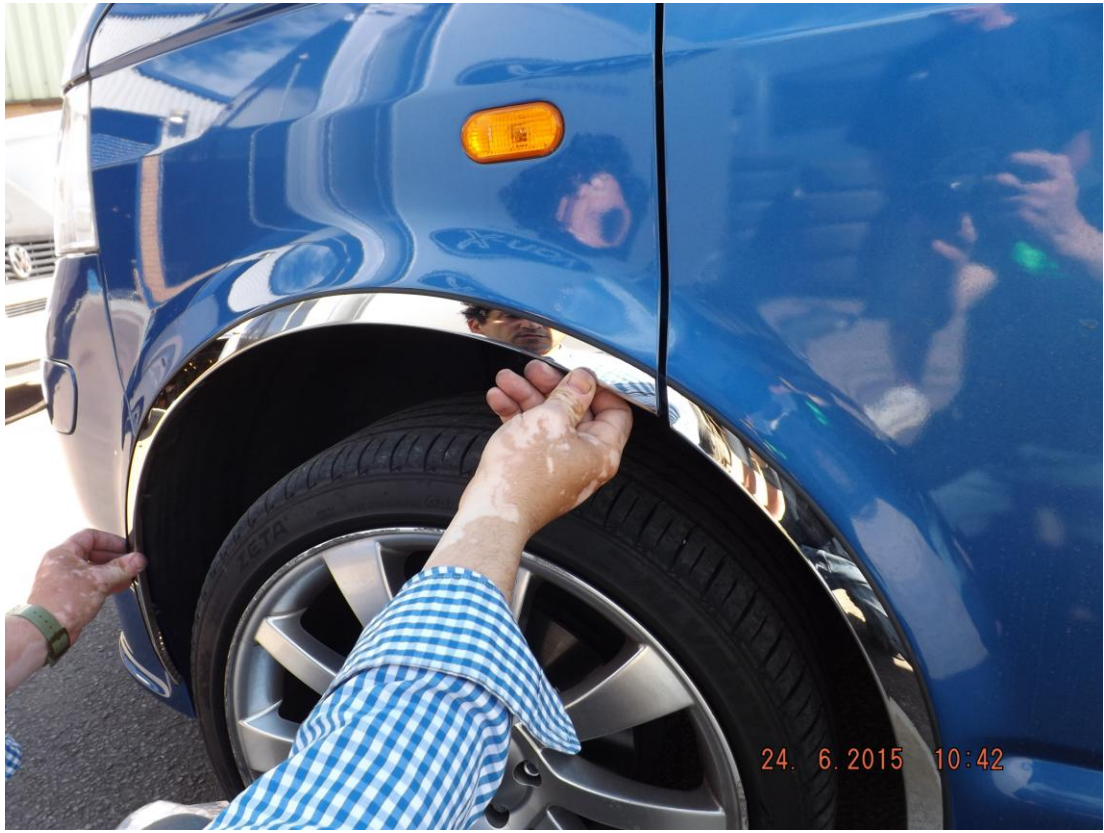


SECOND PART OF THE FRONT WHEEL ARCHES.

PEEL OFF THE SELF ADHESIVE AND WARM THE GLUE AS MUCH AS YOU CAN. THE HEAT WILL NOT DAMAGE THE METAL MATERIAL

PLEASE CHECK THE IMAGE CAREFULLY TO SEE THE SECOND PART OF THE WHEEL ARCH AS IT FINISHES ON THE EDGE OF THE FRONT WING.

24. 6. 2015 10:42



24. 6. 2015 10:42

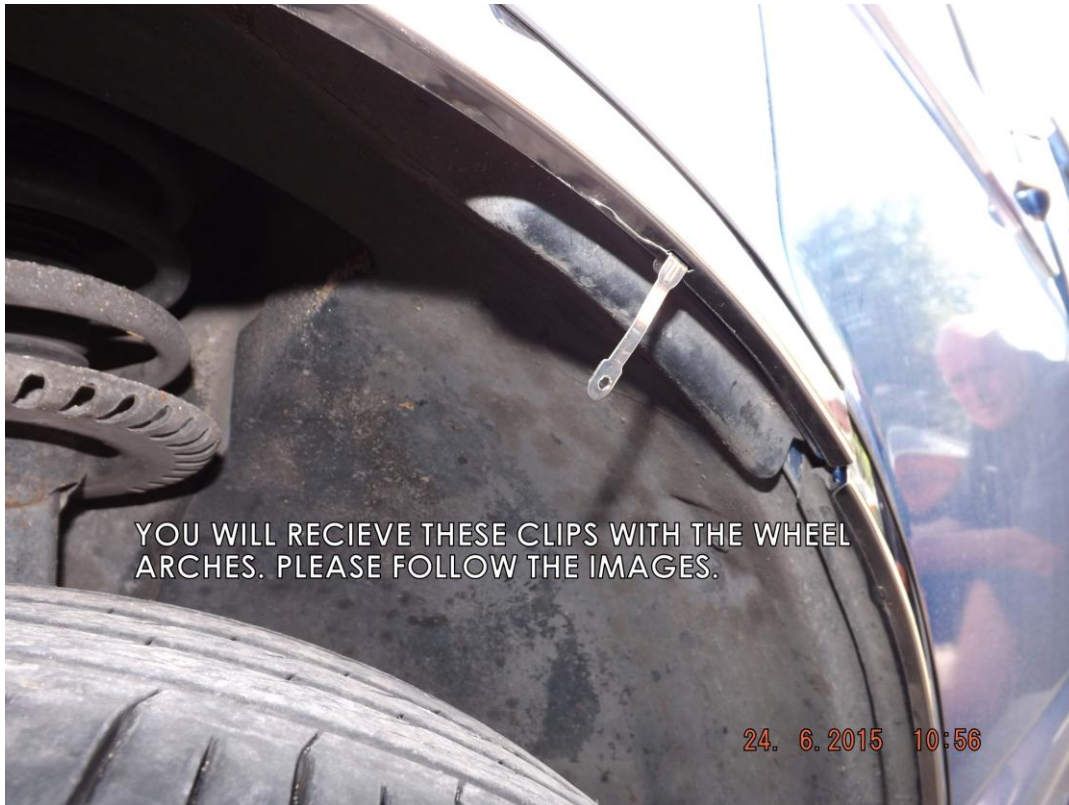


THE CLIP SUPPLIED WITH THE SPECIAL RIVETS IS FOR PLASTIC USE ONLY.

24. 6. 2015 10:54



24. 6. 2015 10:54



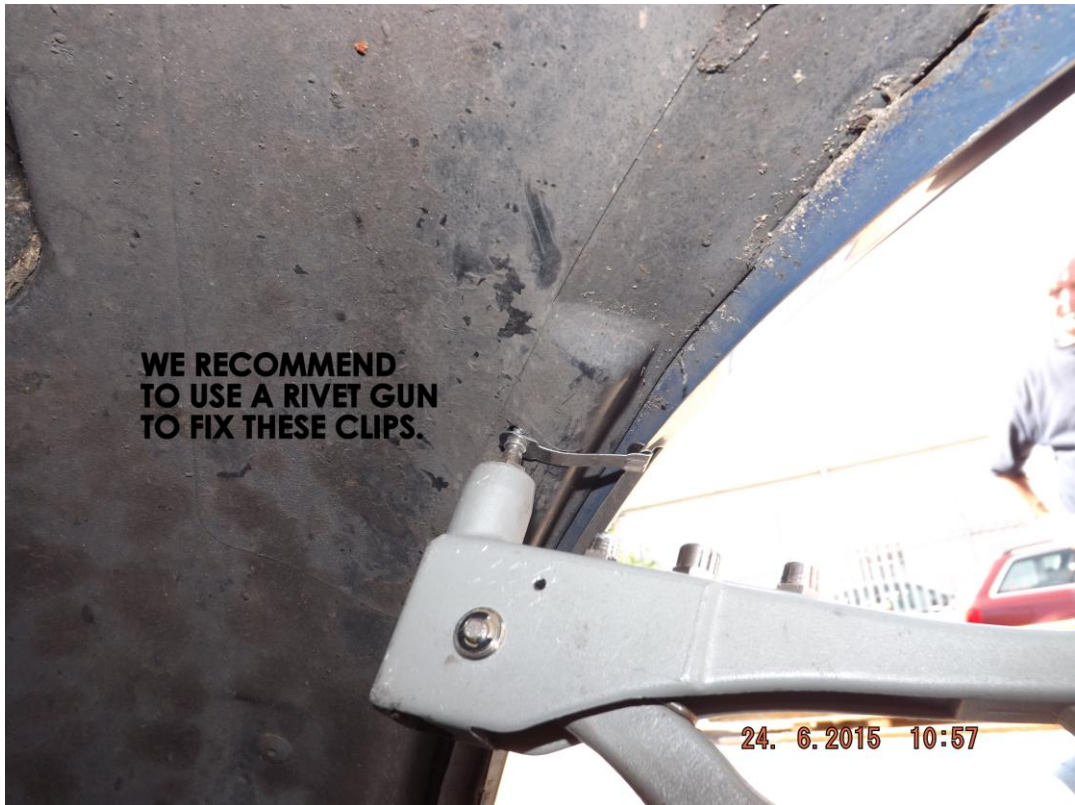
YOU WILL RECIEVE THESE CLIPS WITH THE WHEEL ARCHES. PLEASE FOLLOW THE IMAGES.

24. 6. 2015 10:56



WE RECOMMEND TO USE A RIVET GUN TO FIX THESE CLIPS.

24. 6. 2015 10:57



**WE RECOMMEND
TO USE A RIVET GUN
TO FIX THESE CLIPS.**

24. 6.2015 10:57



PLEASE FOLLOW THESE IMAGES AS THEY
WILL BE VERY USEFUL

24. 6.2015 10:59







- You have now successfully fitted your wheel arches.

If You Still Have Problems/Difficulties Fitting Your Trims, Please Contact Us:

Telephone: 01782 280 888 | **E-Mail:** info@van-x.co.uk or info.vanx@gmail.com

Website: www.van-x.co.uk