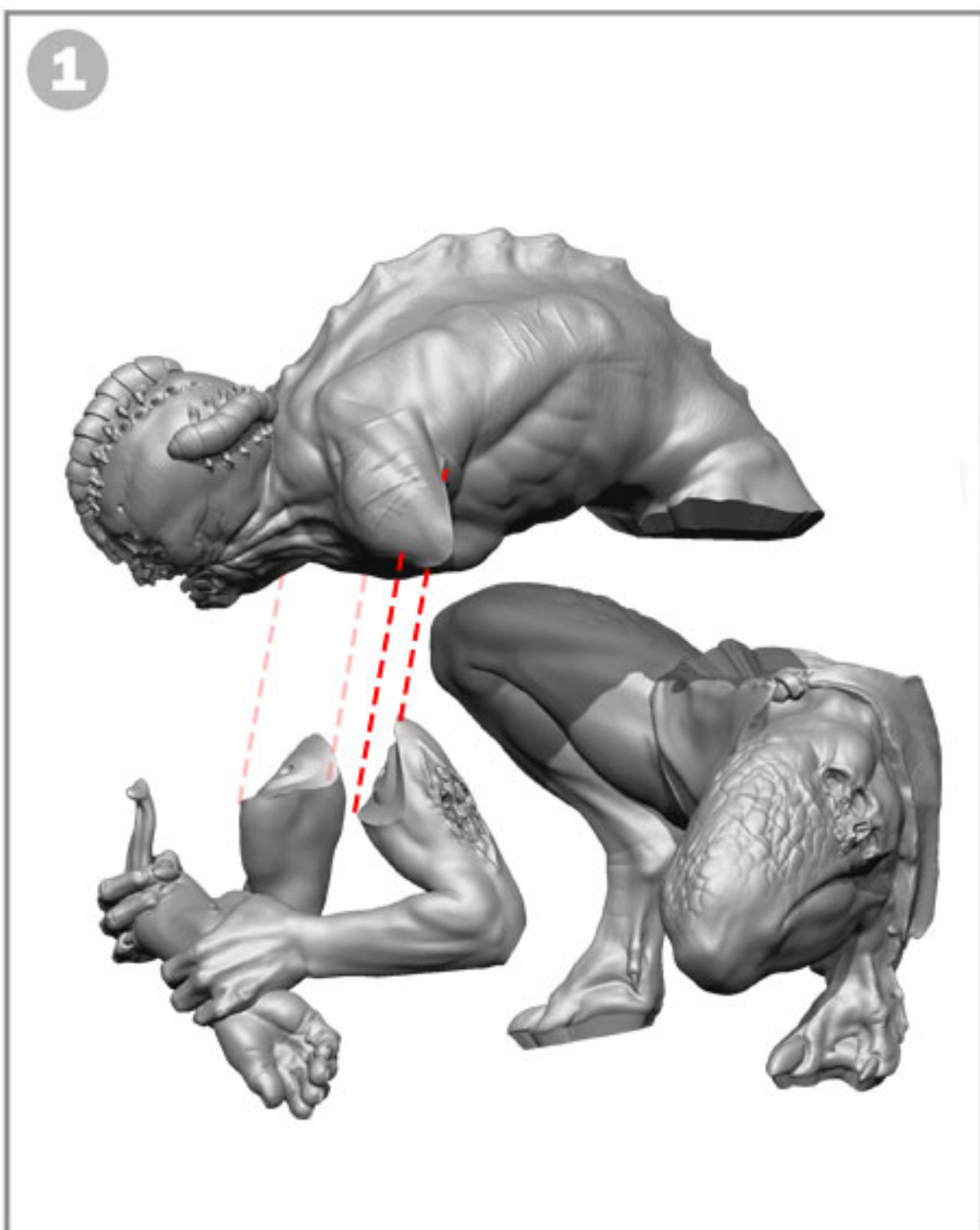
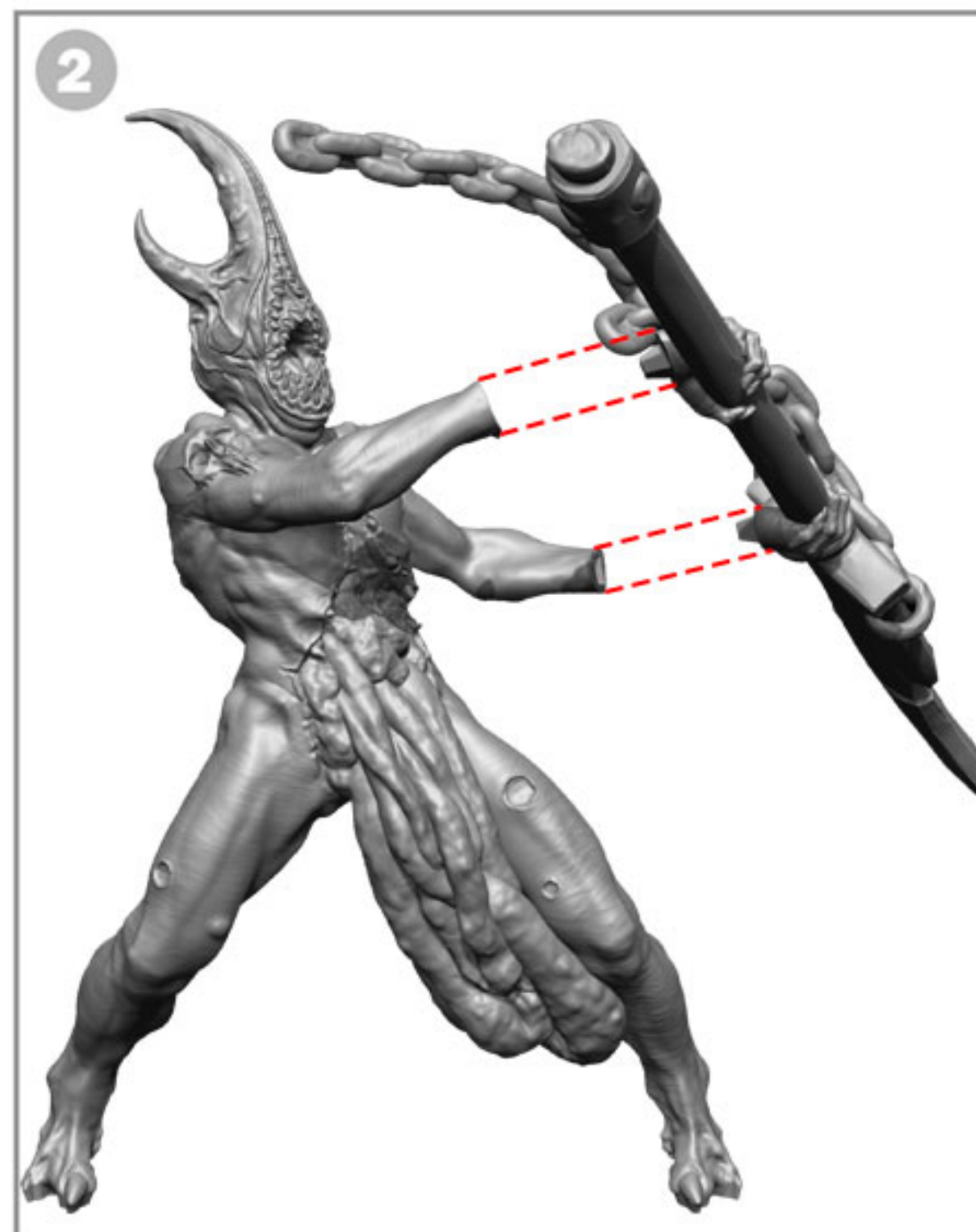
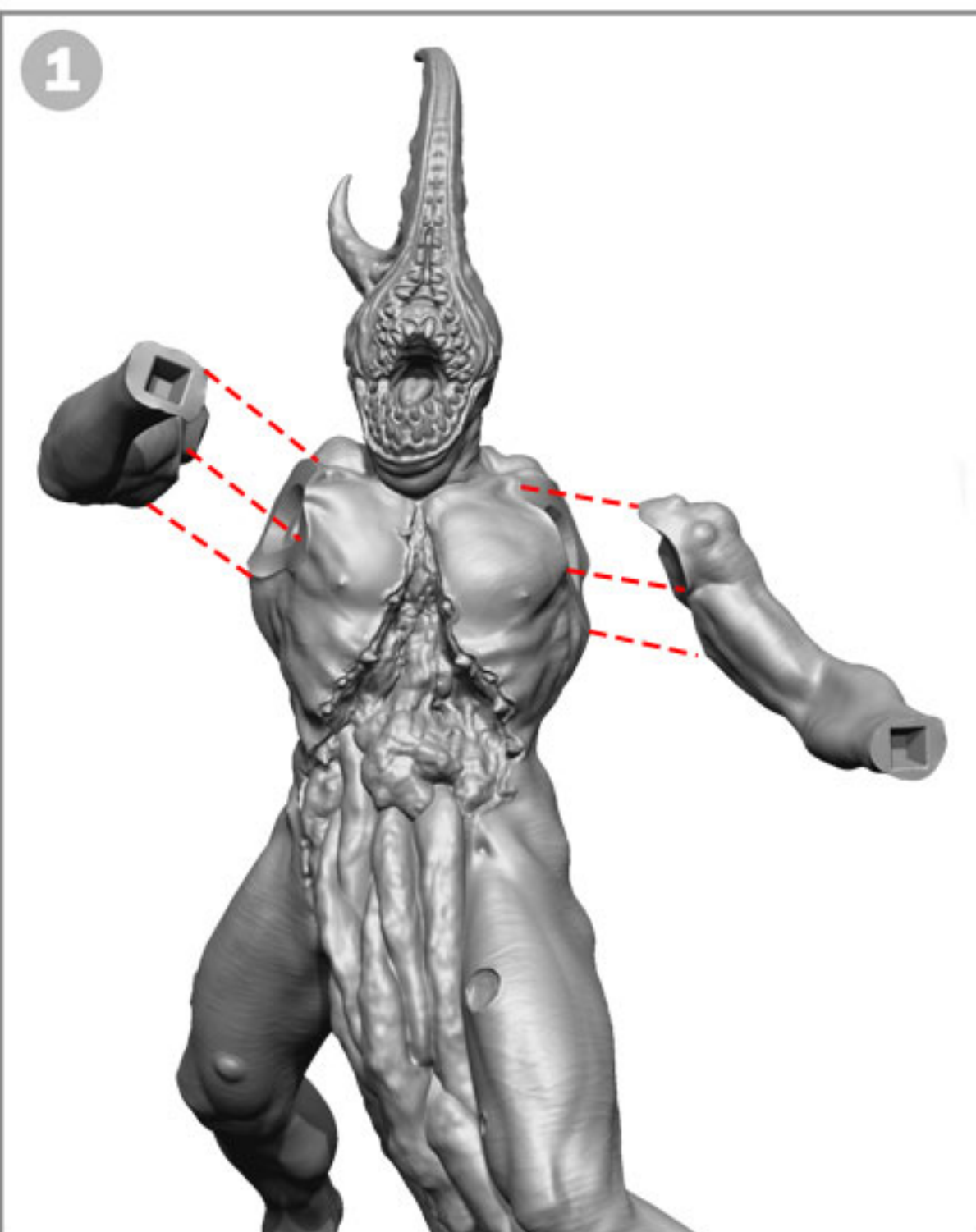


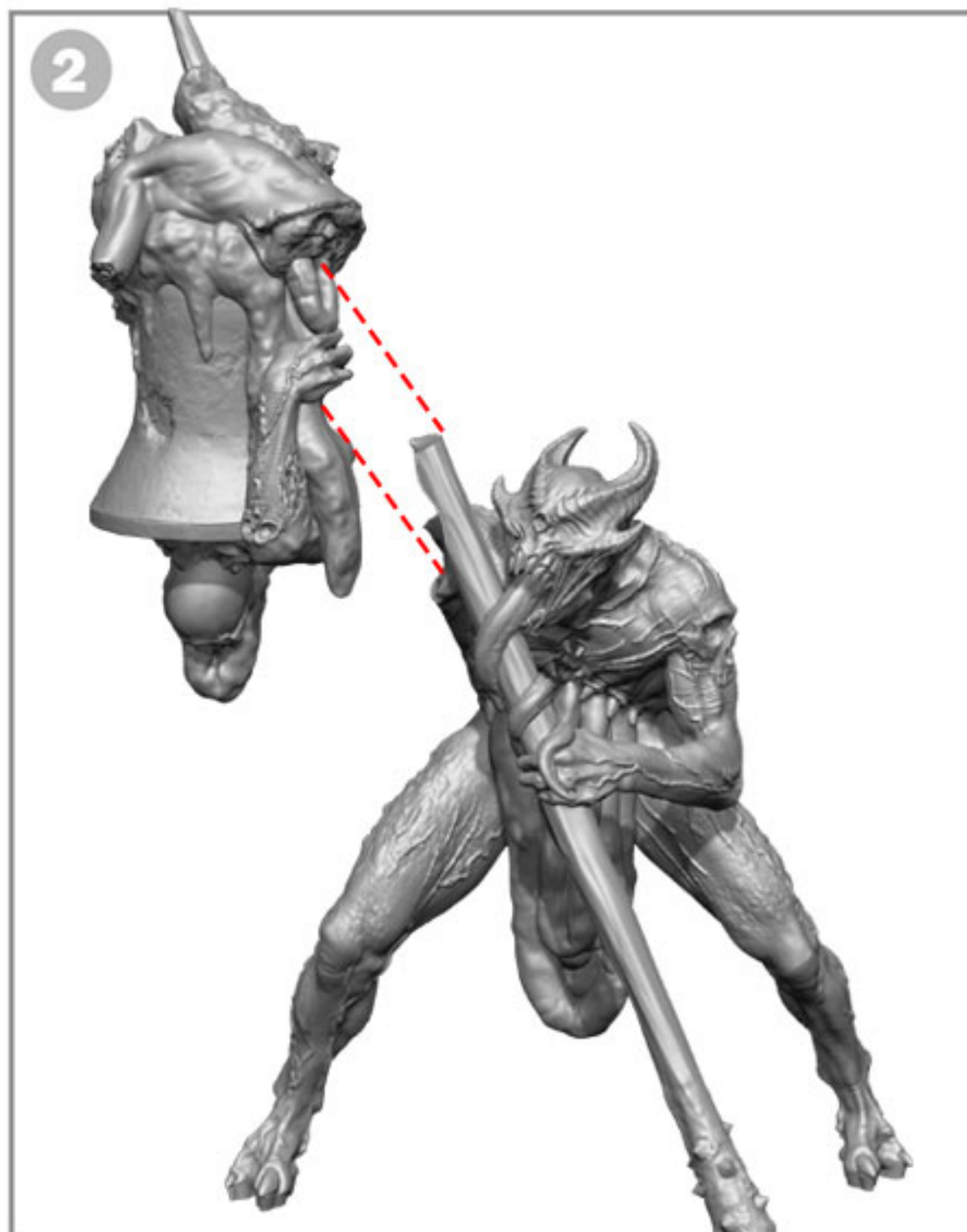
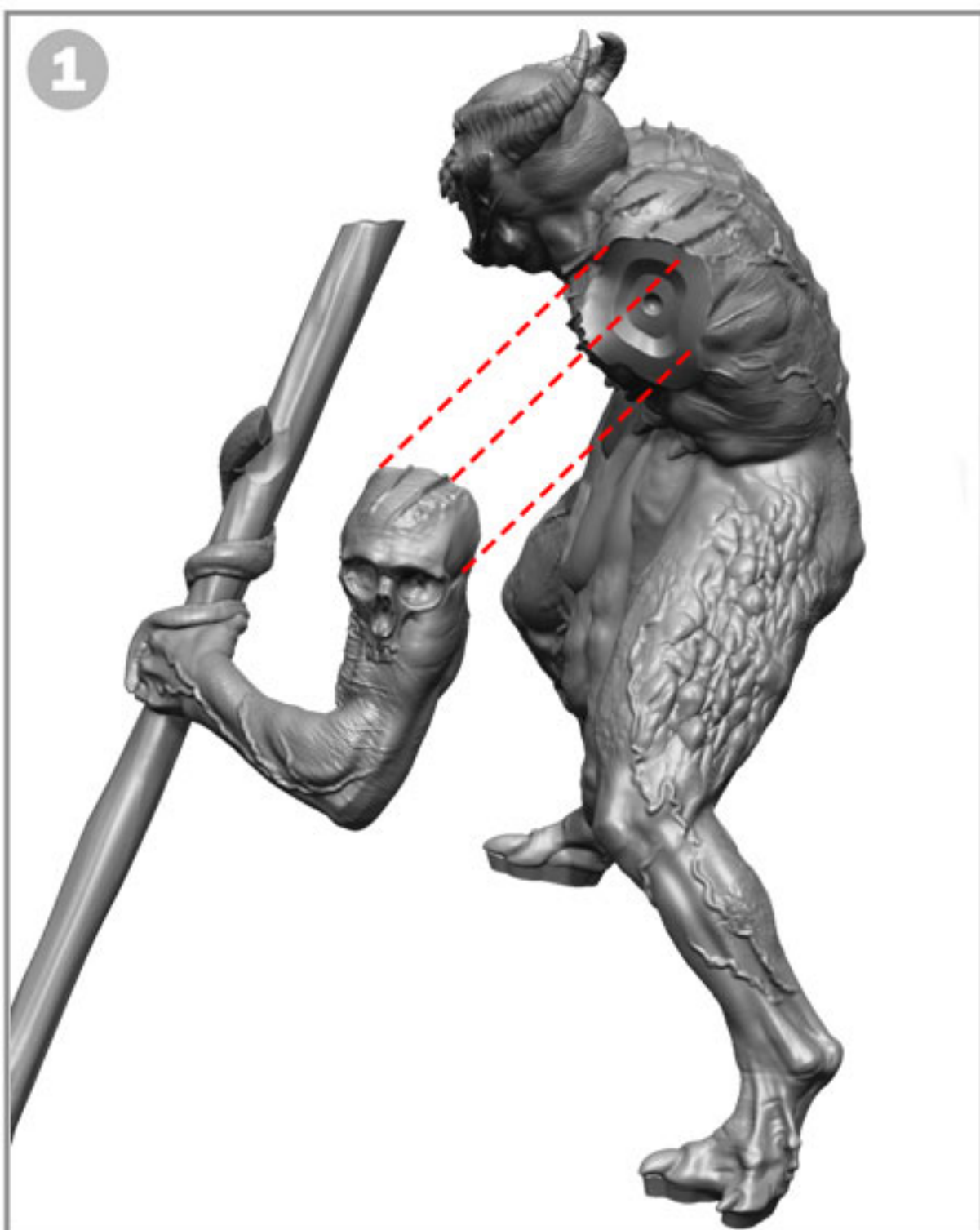
1



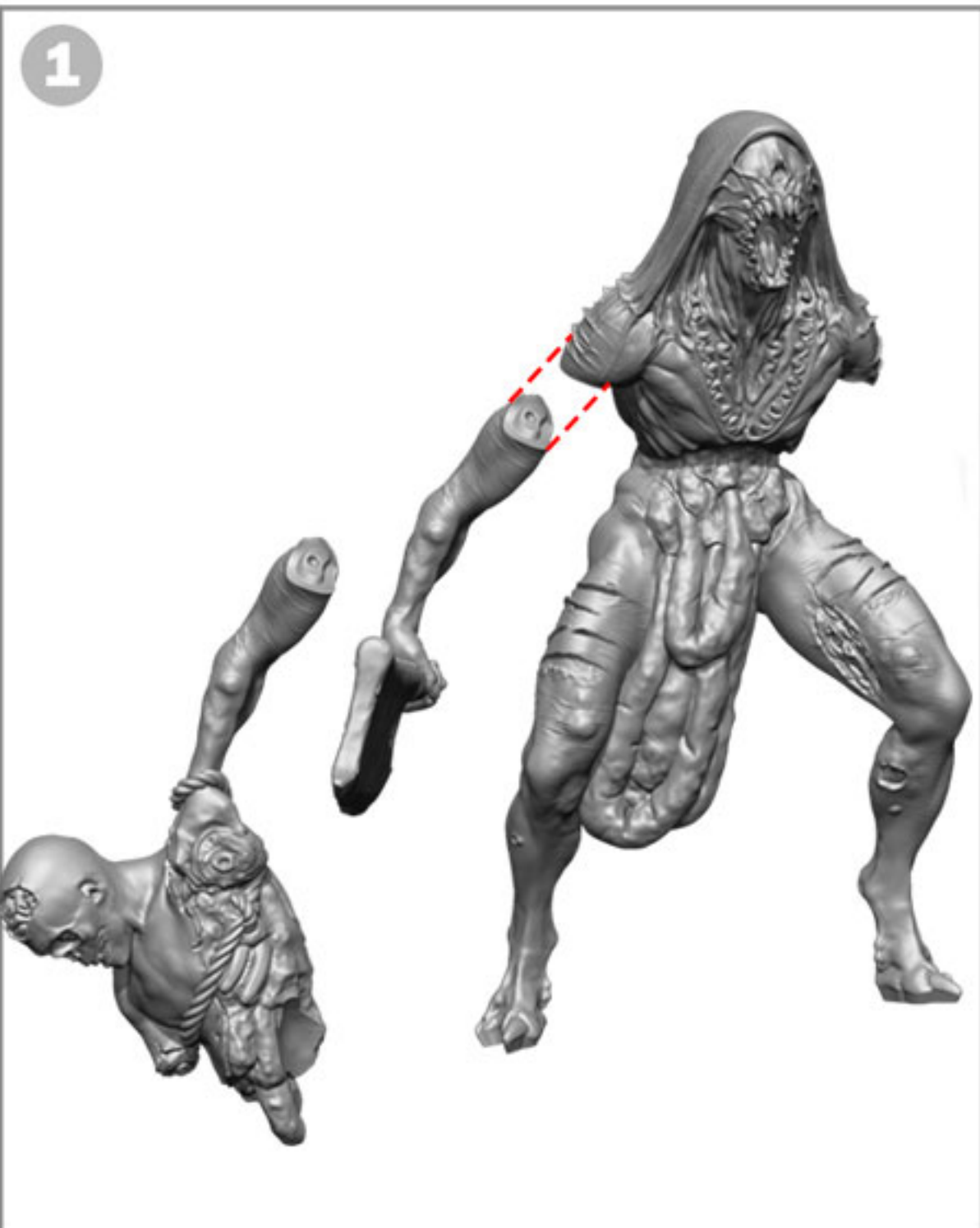
2



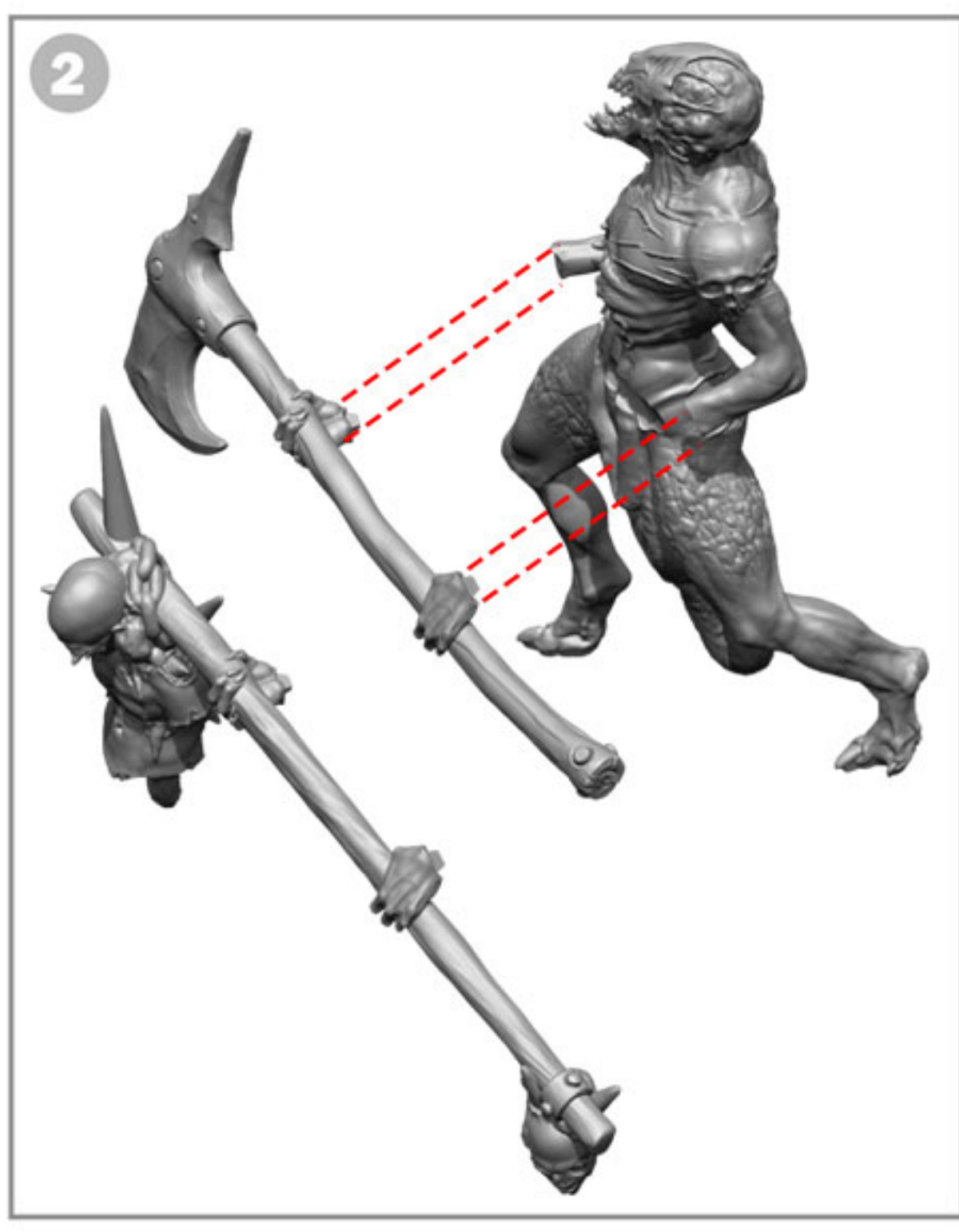
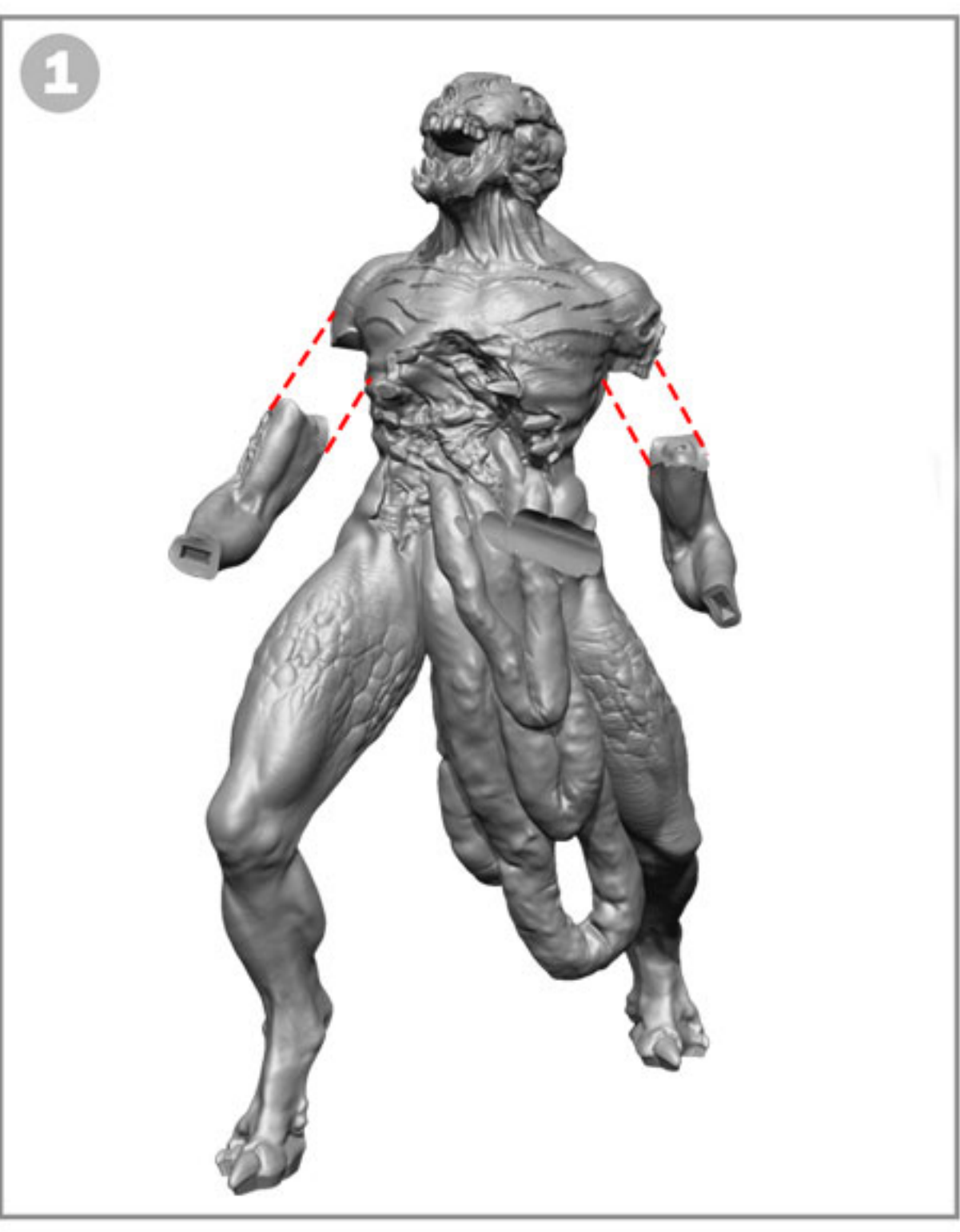
3



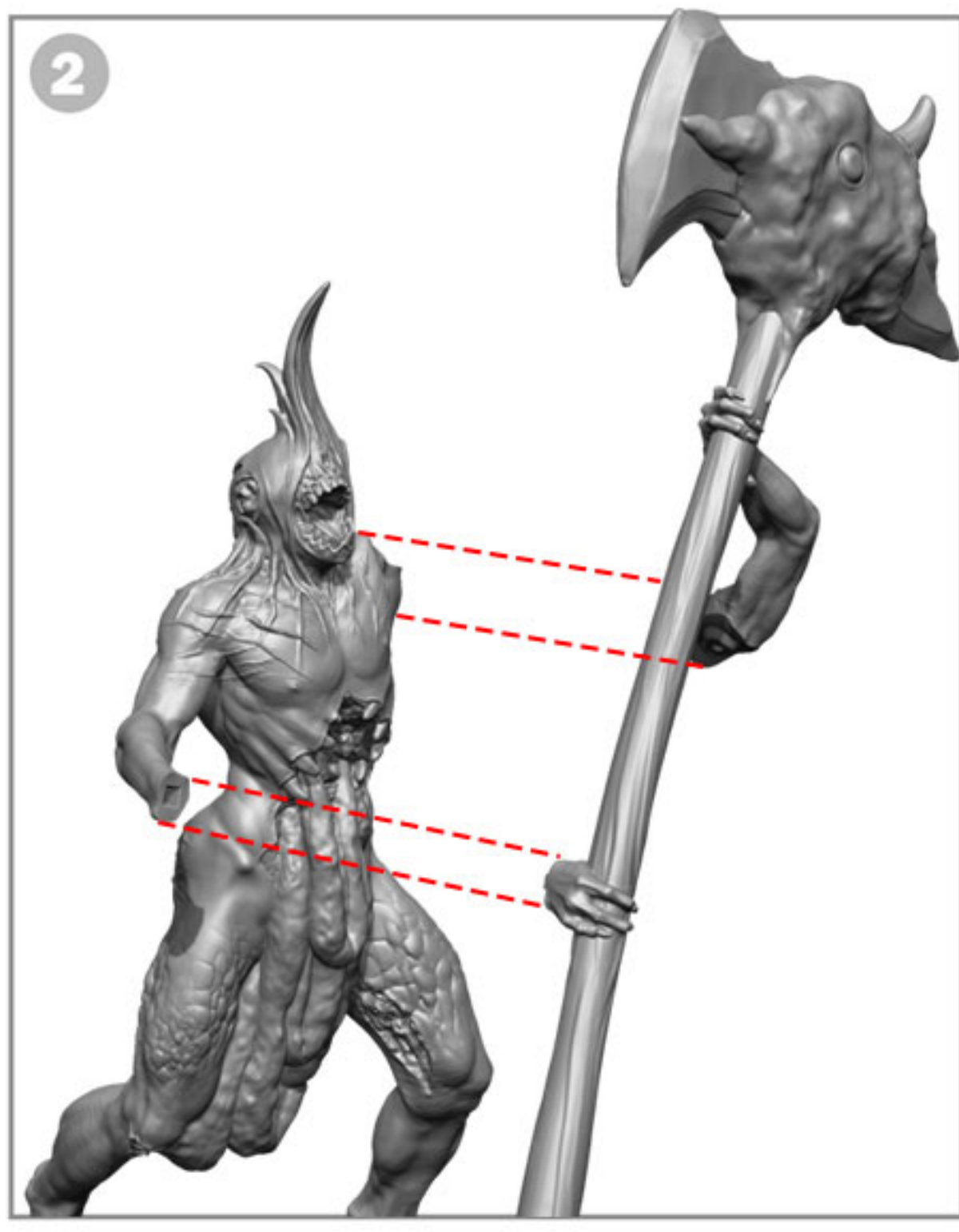
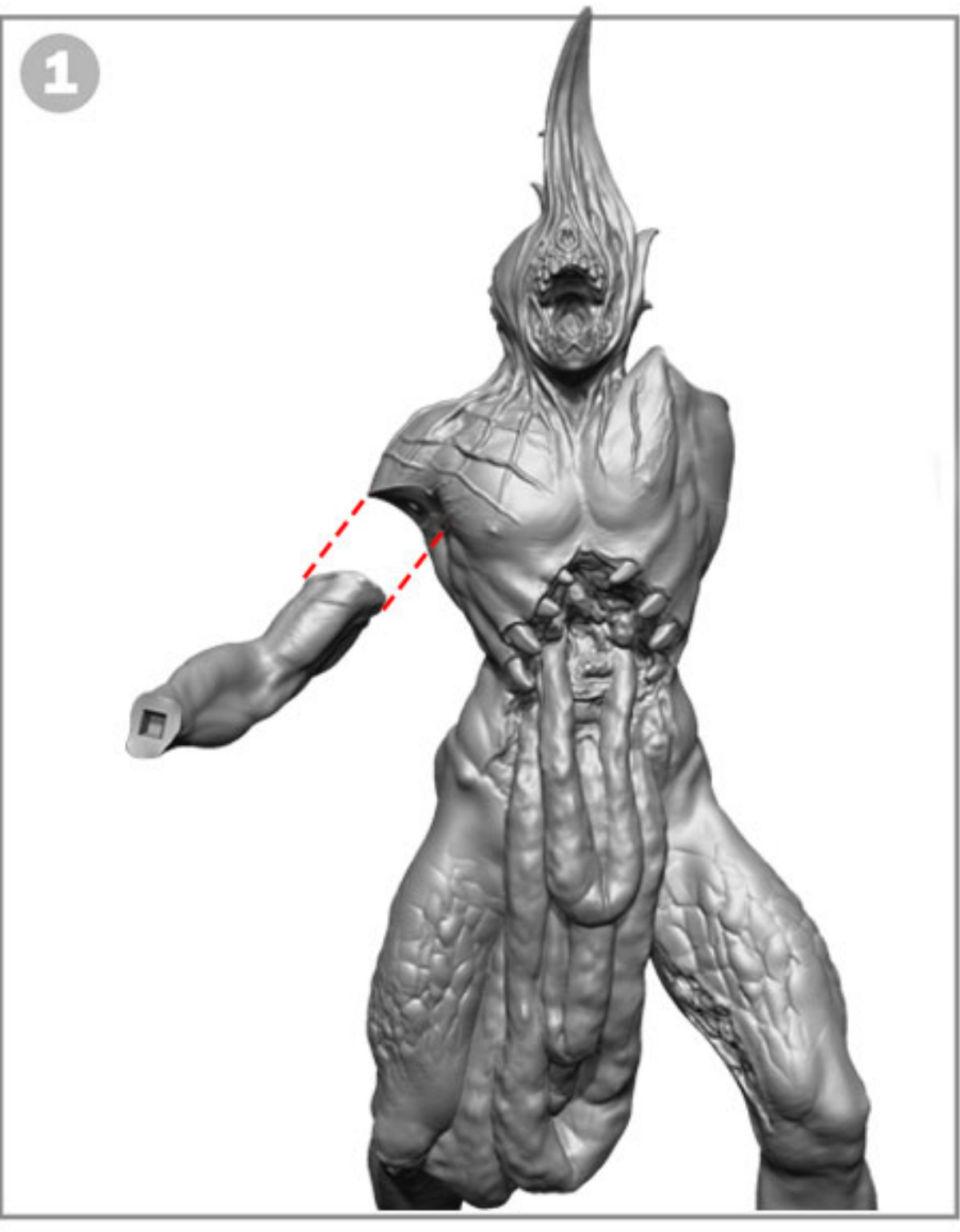
4



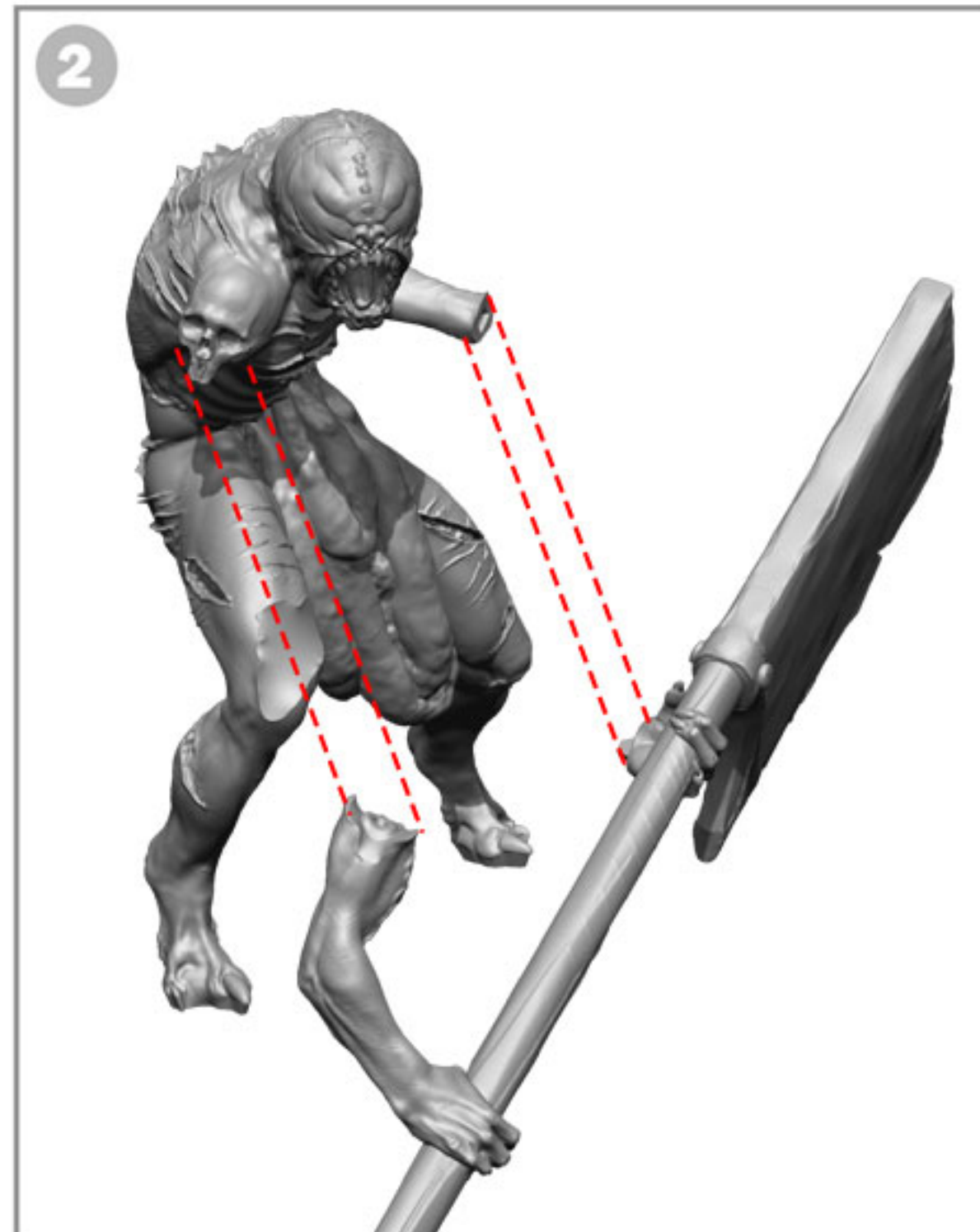
5

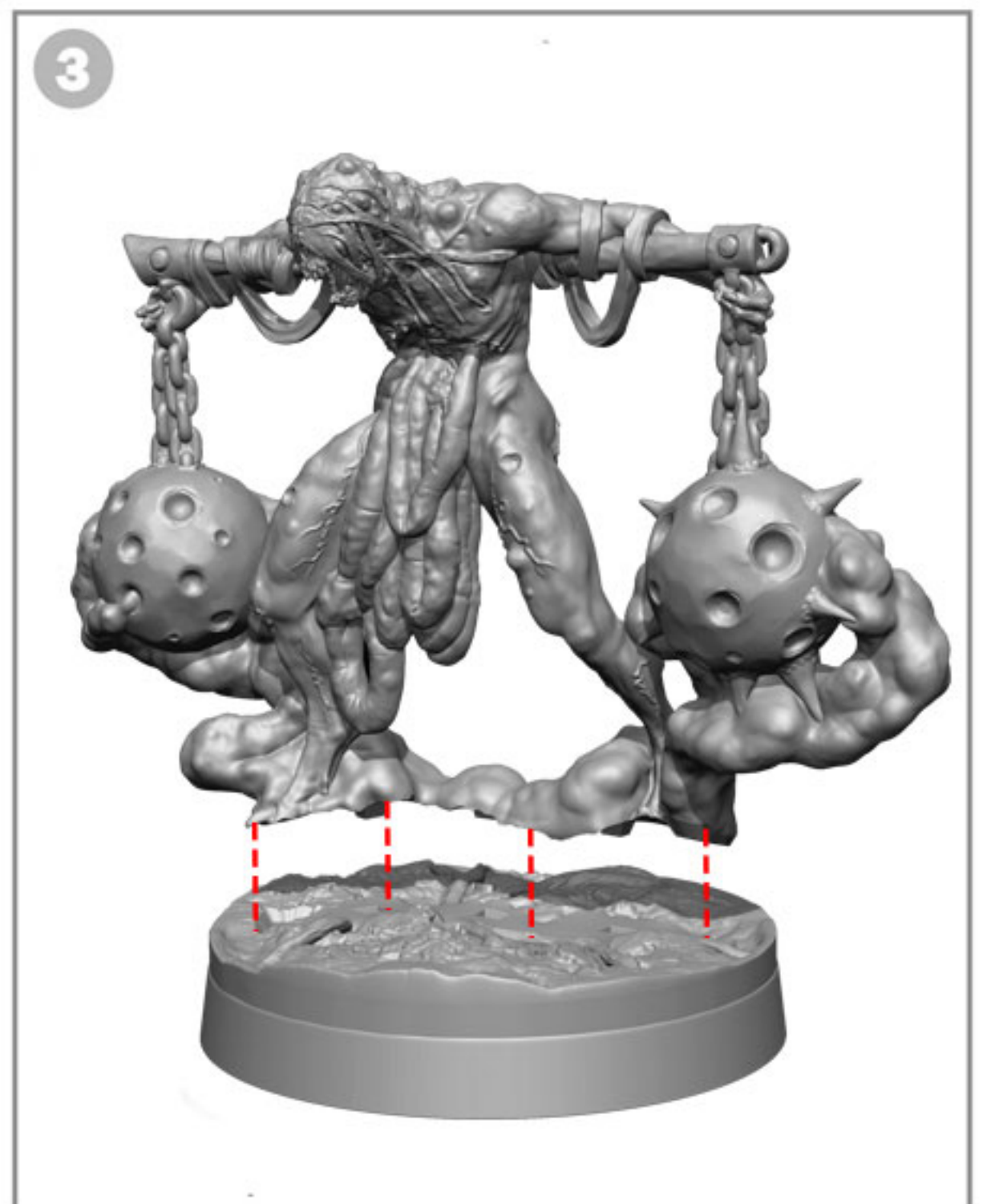
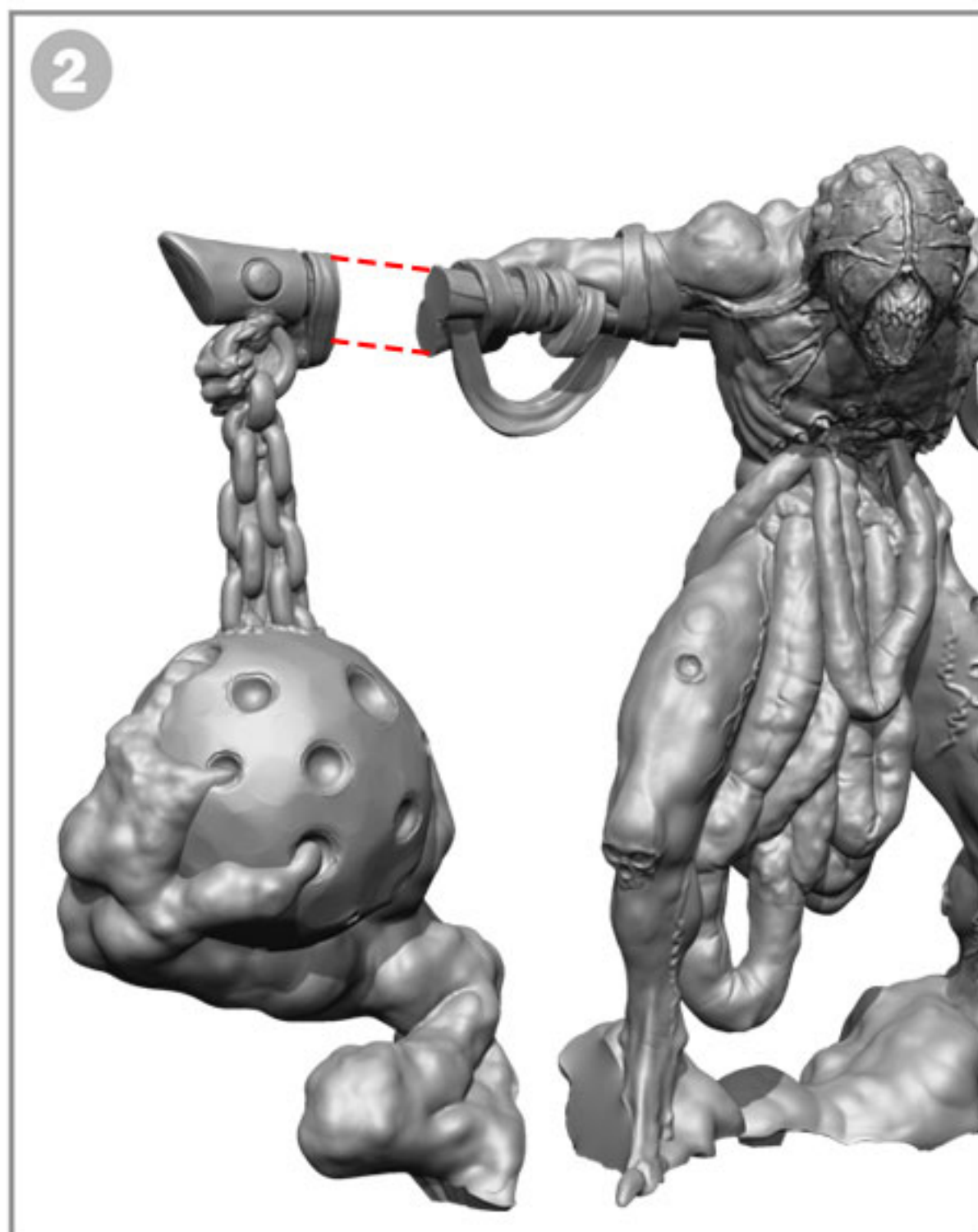
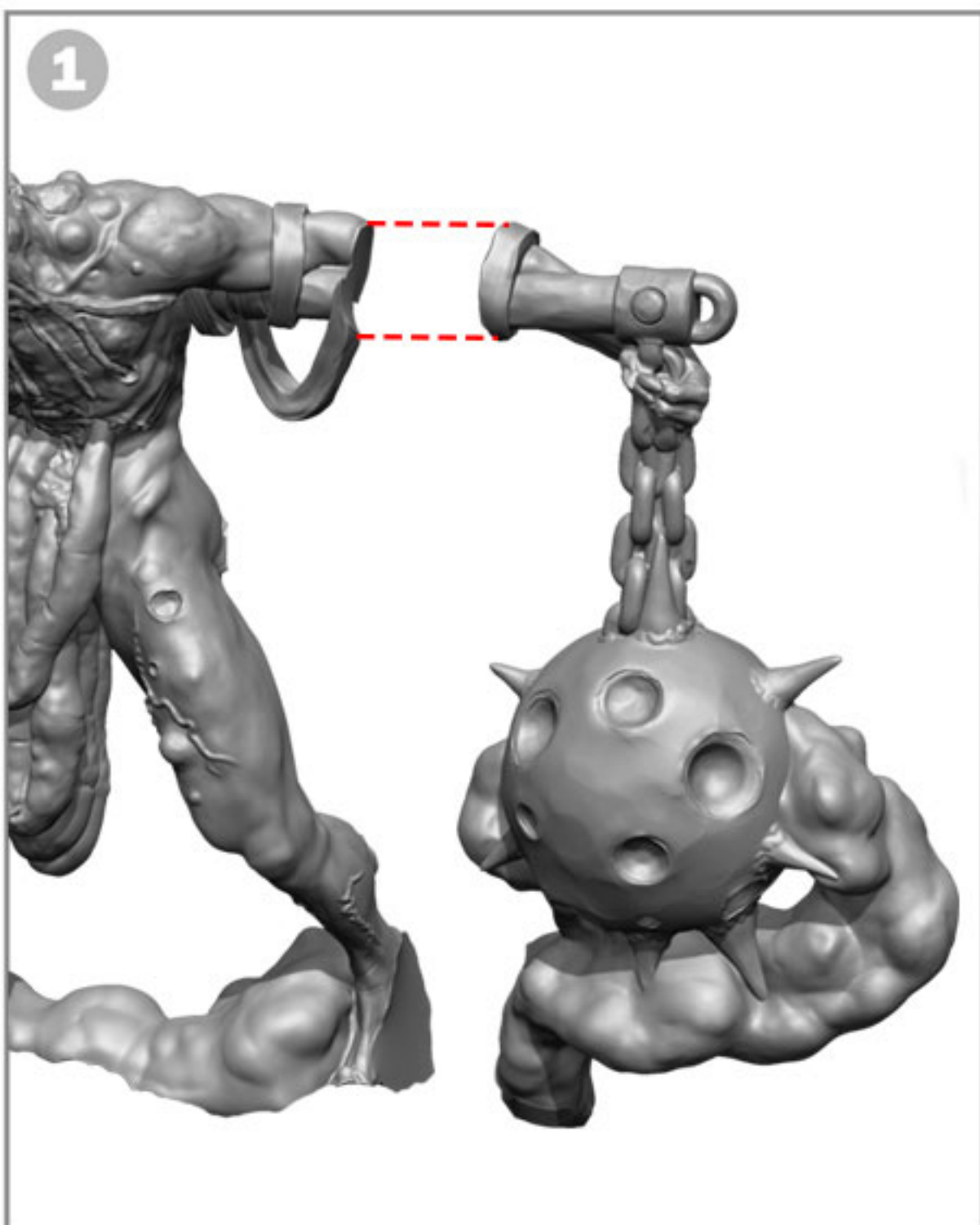


6

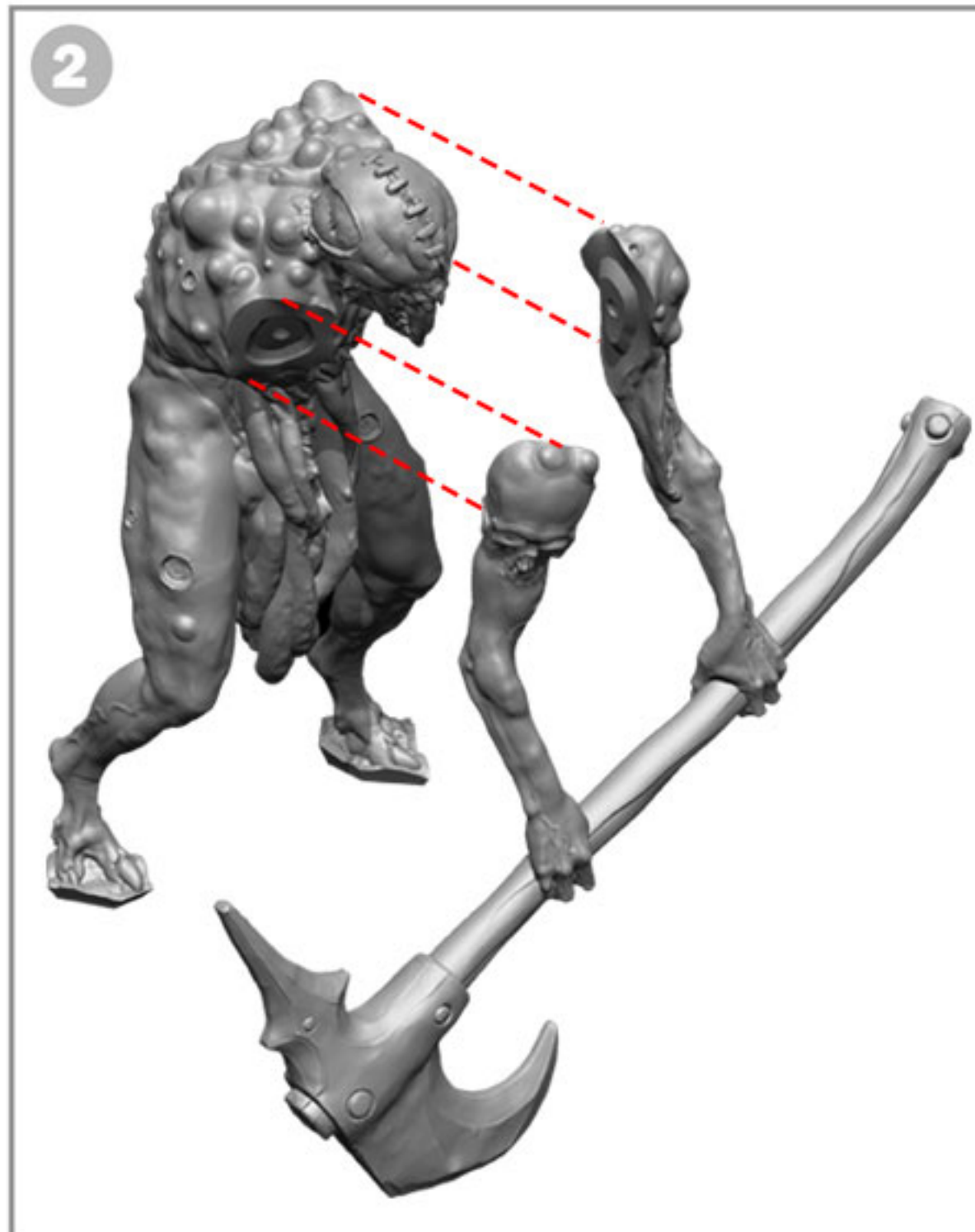
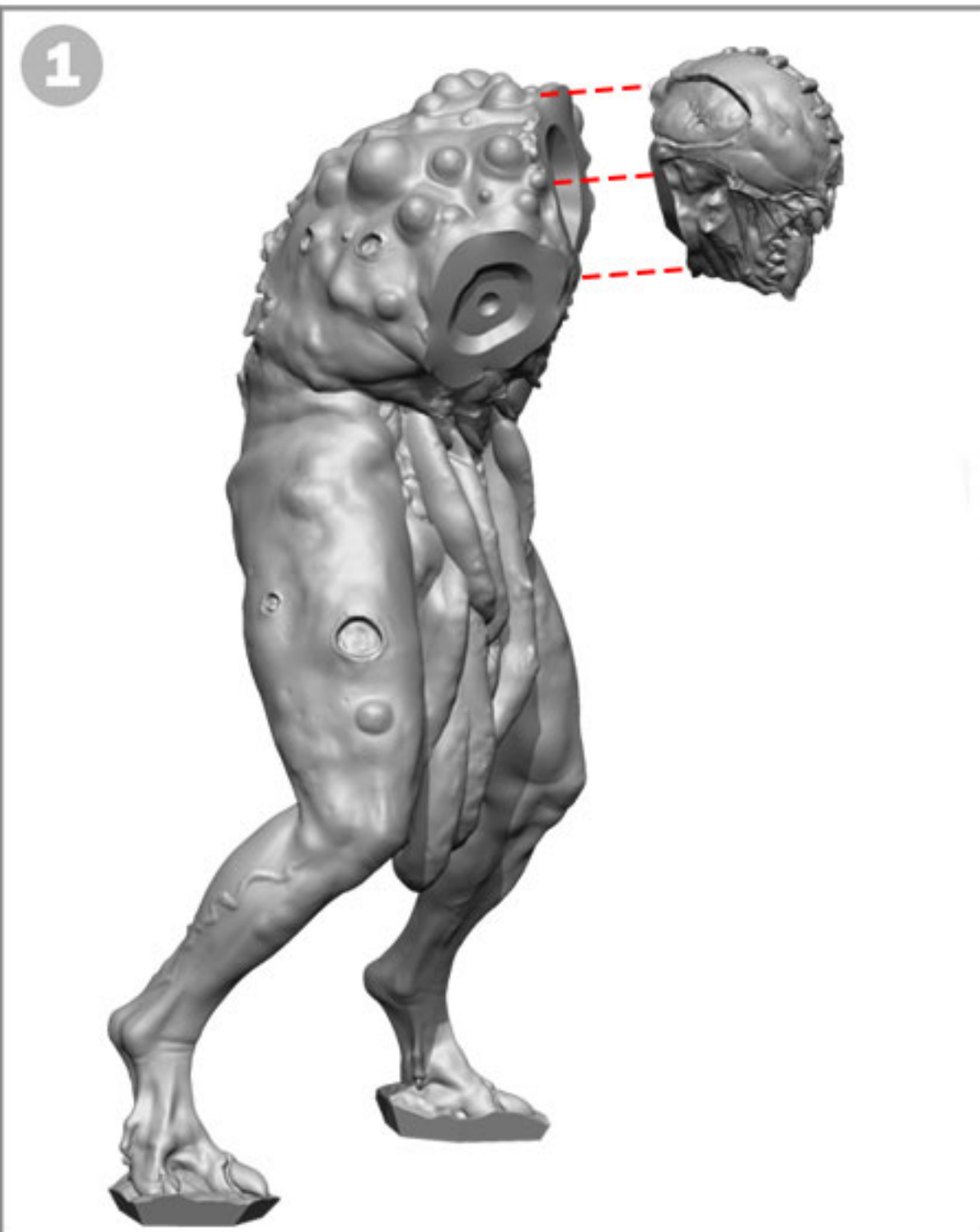


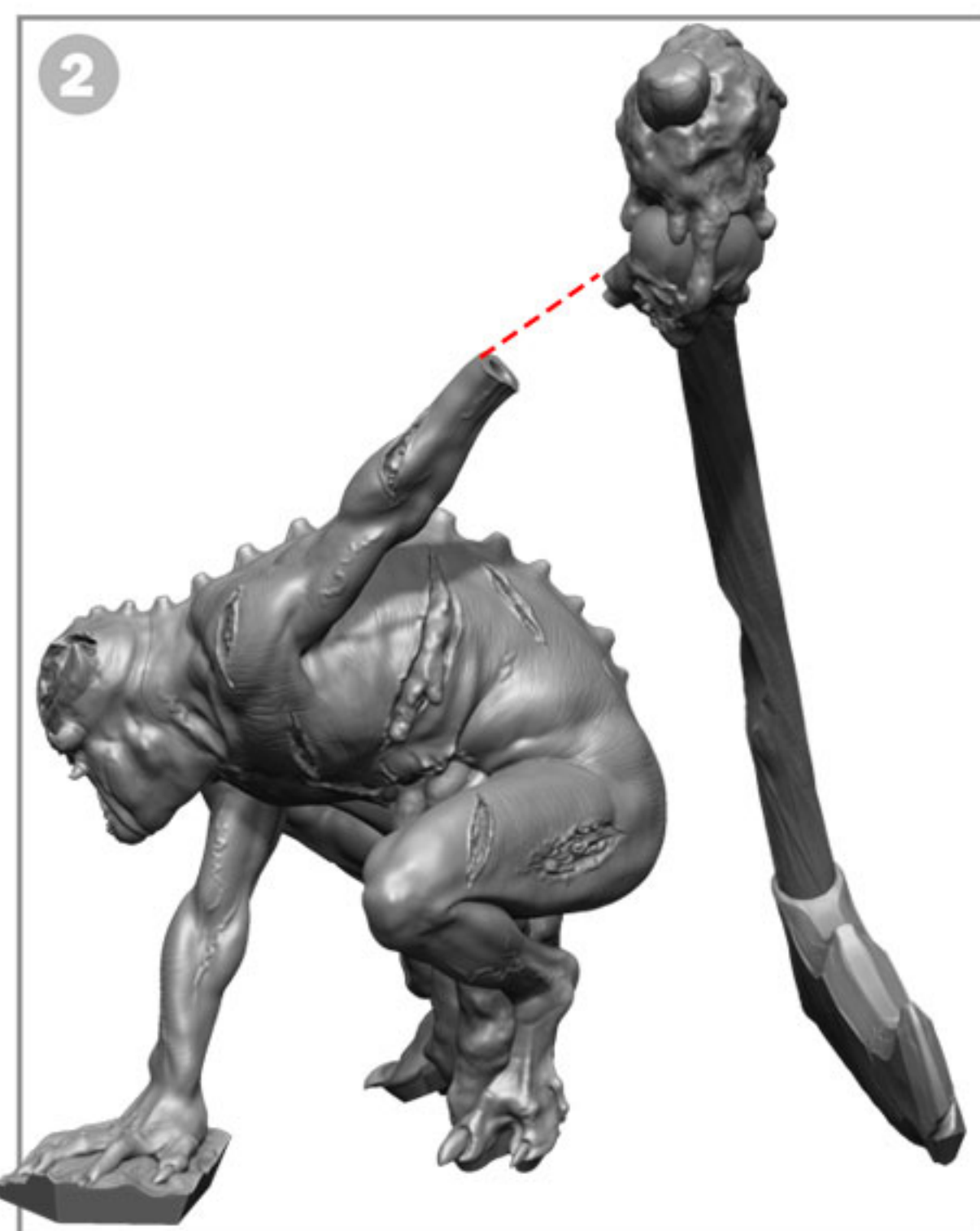
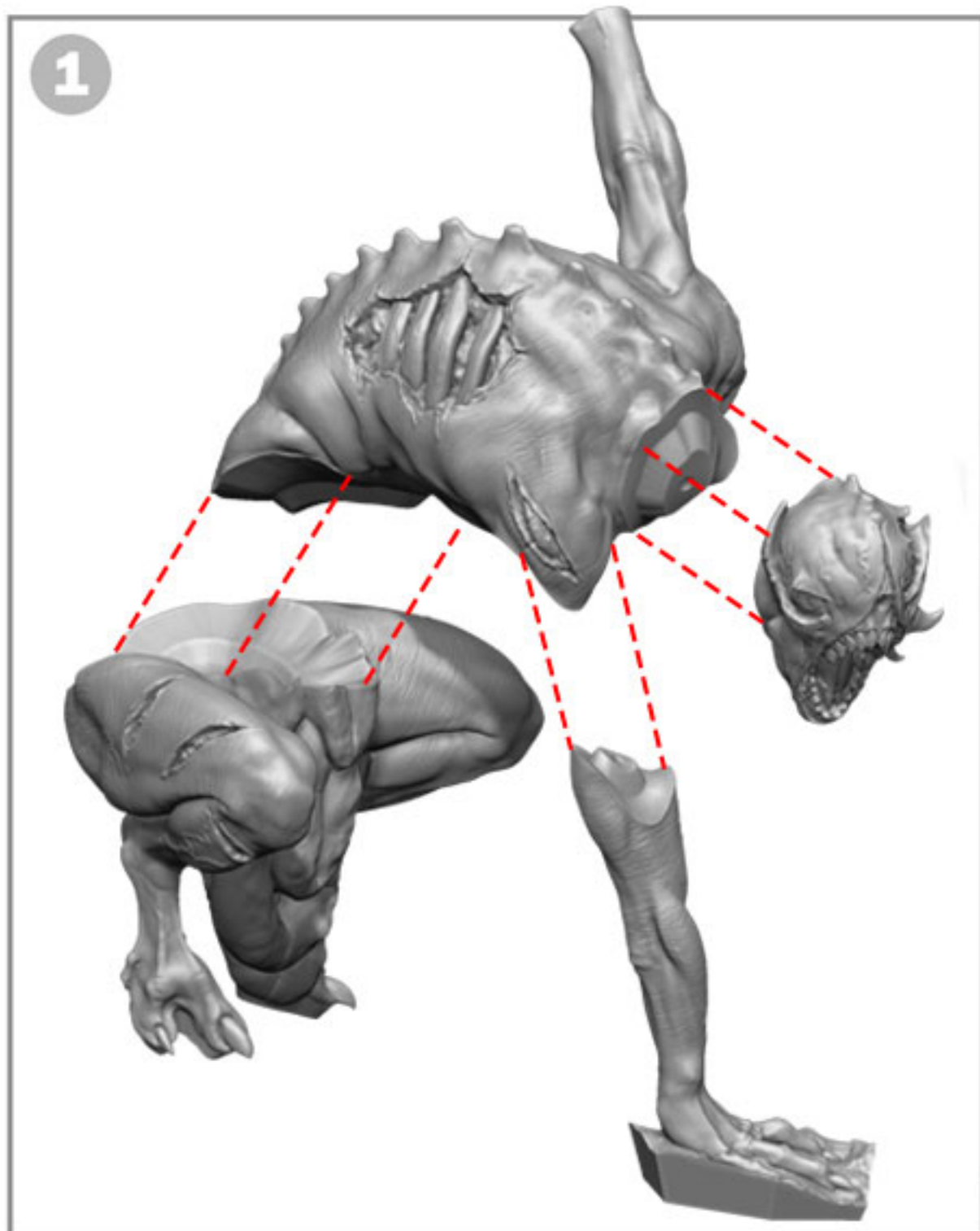
7











# Look for These Symbols on our Assembly Guides and Product Pictures



**The Entry Level.** New to miniatures? Never worked with Resin? Then consider one of these models to get you started. Low number of pieces, that don't require much time to assemble. Basic hobby tools required (super glue, clippers, craft knife). For a seamless finish some minor filling may be required.



**The Hobby Adept** is someone comfortable working with miniatures. If you are familiar with resin then there shouldn't be any surprises. Suitable as a first resin kit for those with hobby experience. Kits tend to have more pieces, or more delicate parts, than the Entry Level. For a seamless finish some filling may be required.



**The Hobby Master.** Familiarity with resin is highly recommended. These kits tend to have a lot of parts and require complex assemblies. Be sure to watch assembly videos when available, as assembling parts in the wrong order can make fitting certain pieces impossible. Heating and bending resin can make assembly easier.



**Classic Models** are models that we produced in the early days of Creature Caster. As we improved the technical aspects of mastering and mold making we were able to improve our joints and overall quality. These classics are fantastic kits, but require a little extra cleaning and filling to get a seamless finish.



**The Plus Symbol** indicates that parts of the model are of a higher difficulty. Look for a note on what to watch out for.

**Assembly Guides Available @ [creaturecaster.com](http://creaturecaster.com) on our product pages!**