

WURLITZER

Electronic Piano Notes

Your questions or comments on

"Electronic Piano Notes" are welcome at any time.

Issued by Wurlitzer Service Dept., DeKalb, Illinois

E.P. NOTE No. 14

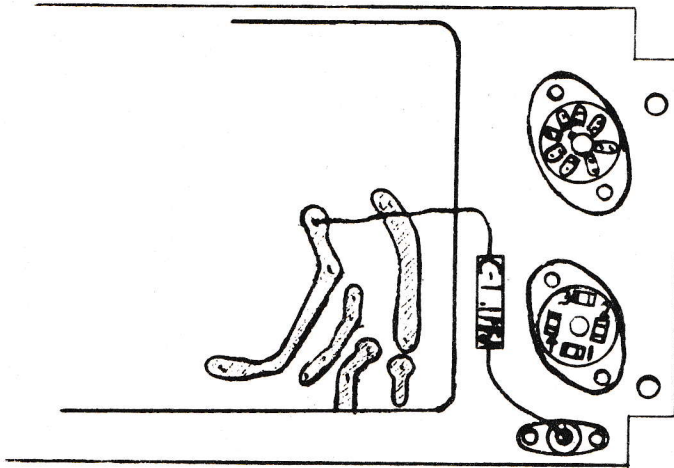
DECEMBER 10, 1962

CIRCUIT MODIFICATION TO PROVIDE PROTECTION FOR TRANSISTOR "TR-1"

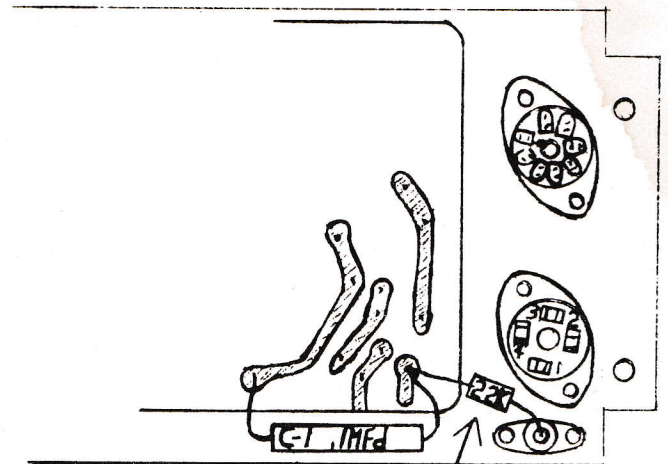
OCCASIONALLY, WHEN TUNING A REED OR SERVICING A REED BAR, AN ACCIDENTAL SHORT CIRCUIT, I.E., LEAD FILINGS, CAN OCCUR WHICH CAUSES A SPIKE PULSE TO SHOCK TRANSISTOR TR-1, RESULTING IN THE POSSIBLE FAILURE OF THE TRANSISTOR.

A 22K RESISTOR IS NOW BEING INCORPORATED BETWEEN THE INPUT PLUG AND C-1. WHENEVER SERVICING THE AMPLIFIER, WE SUGGEST YOU CHECK FOR THIS REVISION, AS ILLUSTRATED BELOW:

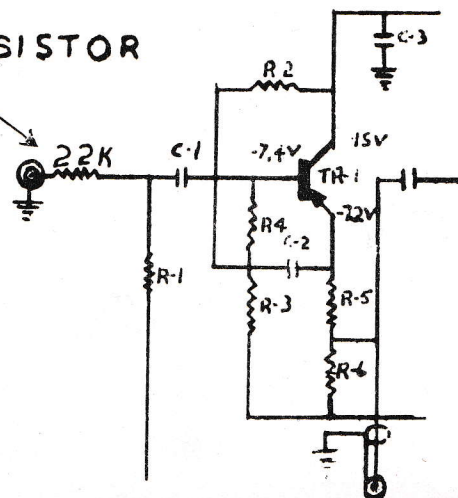
BEFORE



AFTER



ADD THIS RESISTOR



ADD THIS RESISTOR

PHONO INPUT