



*Vintage Vibe*  
ELECTRIC PIANO CO.



200 & 200A  
Wurlitzer Power Transformers

# TABLE OF CONTENTS

<i>PRIMARY WIRING SCHEMATICS.....</i>	<i>PAGE 2</i>
<i>MODEL 200 VINTAGE AMPLIFIER.....</i>	<i>PAGE 3</i>
<i>MODEL 200A VINTAGE AMPLIFIER.....</i>	<i>PAGE 4</i>
<i>VINTAGE VIBE CLASSIC 200 AMP.....</i>	<i>PAGE 5</i>
<i>VINTAGE VIBE 200A AMP .....</i>	<i>PAGE 6</i>

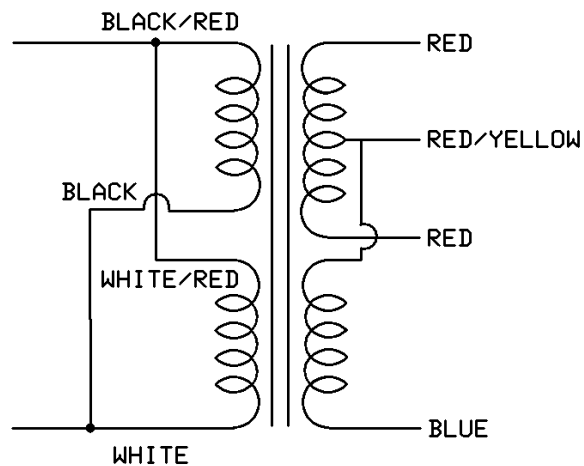
# PRIMARY WIRING SCHEMATIC

## 120VAC LINE VOLTAGE

### For 120VAC:

Wire primaries in parallel:

1. Pair Black/Red and White/Red wires together
2. Pair Black and White wires together
3. Use the paired wires together in the circuit

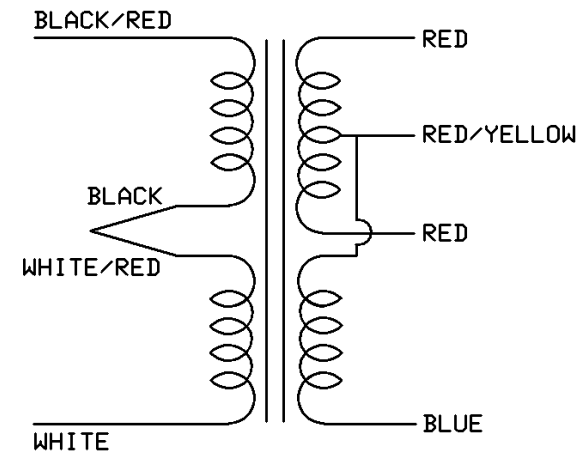


## 240VAC LINE VOLTAGE

### For 240VAC:

Wire primaries in series:

1. Connect Black and White/Red wires together  
Enclose connection in heatshrink
3. Use Black/Red and White wires in the circuit

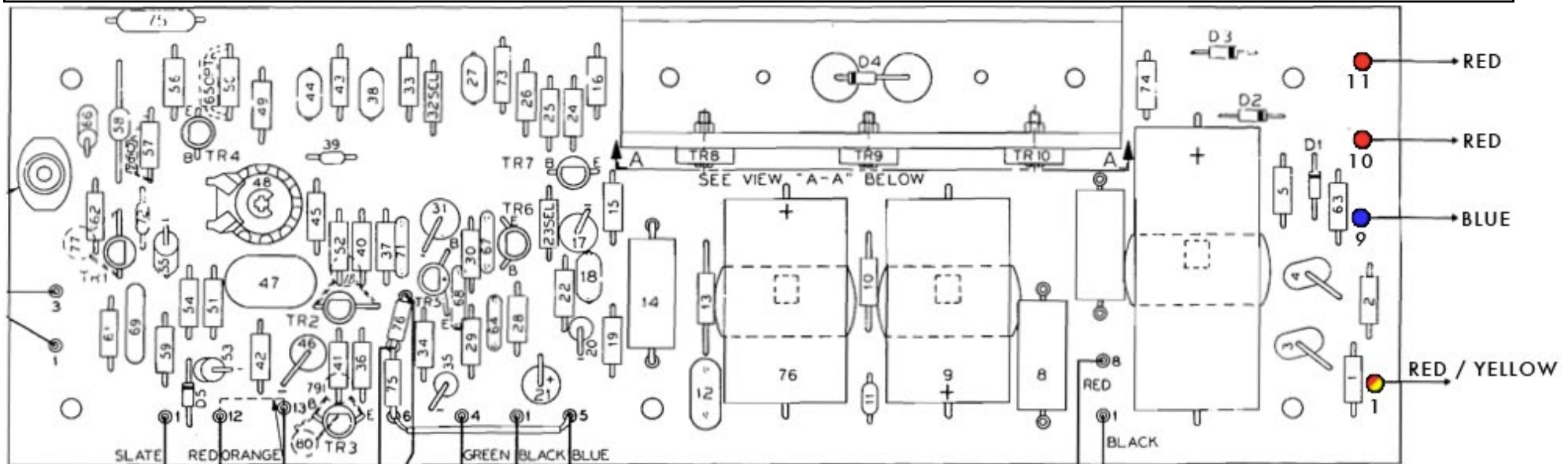


# Model 200 Vintage Amplifier:

Solder the transformer's secondary wires to the corresponding locations on the amplifier PCB as indexed in the table below.

TRANSFORMER WIRE	AMPLIFIER PCB
RED	PIN #10
RED	PIN#11
BLUE	PIN #9
RED/YELLOW	PIN #1

## BOARD DIAGRAM

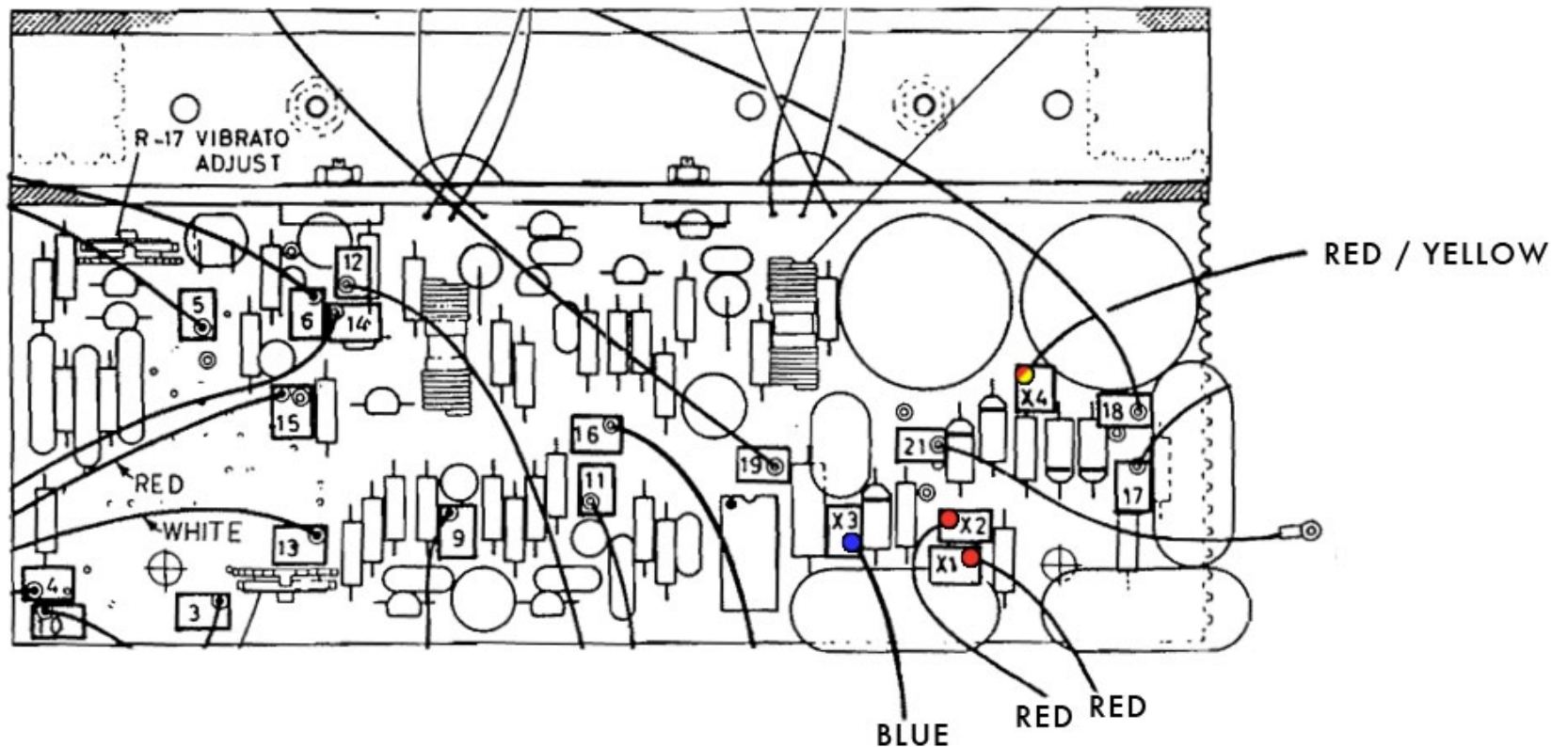


# Model 200A Vintage Amplifier:

Solder the transformer's secondary wires to the corresponding locations on the amplifier PCB as indexed in the table below.

TRANSFORMER WIRE	AMPLIFIER PCB
RED	PIN X1
RED	PIN X2
BLUE	PIN X3
RED/YELLOW	PIN X4

## BOARD DIAGRAM

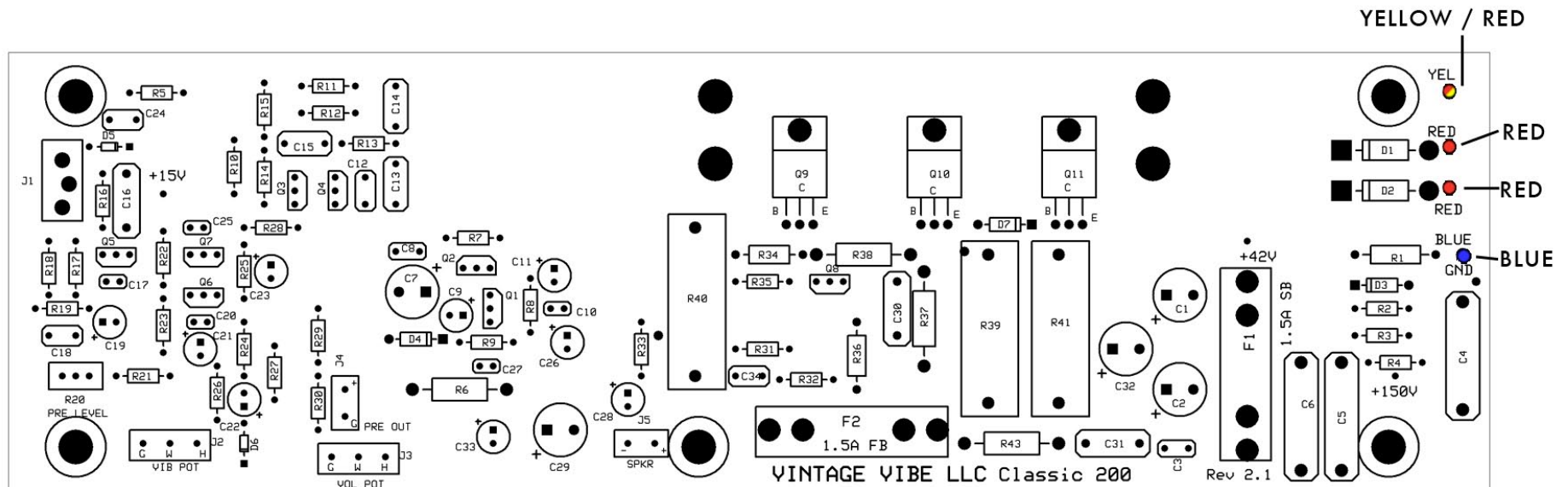


# Vintage Vibe Classic 200 Amplifier:

Solder the transformer's secondary wires to the corresponding locations on the amplifier PCB as indexed in the table below.

Transformer Wire	Amplifier PCB
Red	"RED"
Red	"RED"
Blue	"BLUE"
Red/Yellow	"YEL"

## BOARD DIAGRAM



# Vintage Vibe 200A Wurly-Vibe Amplifier:

Solder the transformer's secondary wires to the corresponding locations on the amplifier PCB as indexed in the table below.

Transformer Wire	Amplifier PCB
Red	"R"
Red	"R"
Blue	"B"
Red/Yellow	"R/Y"

## BOARD DIAGRAM

