



VINTAGE VIBE
ELECTRIC PIANO CO.

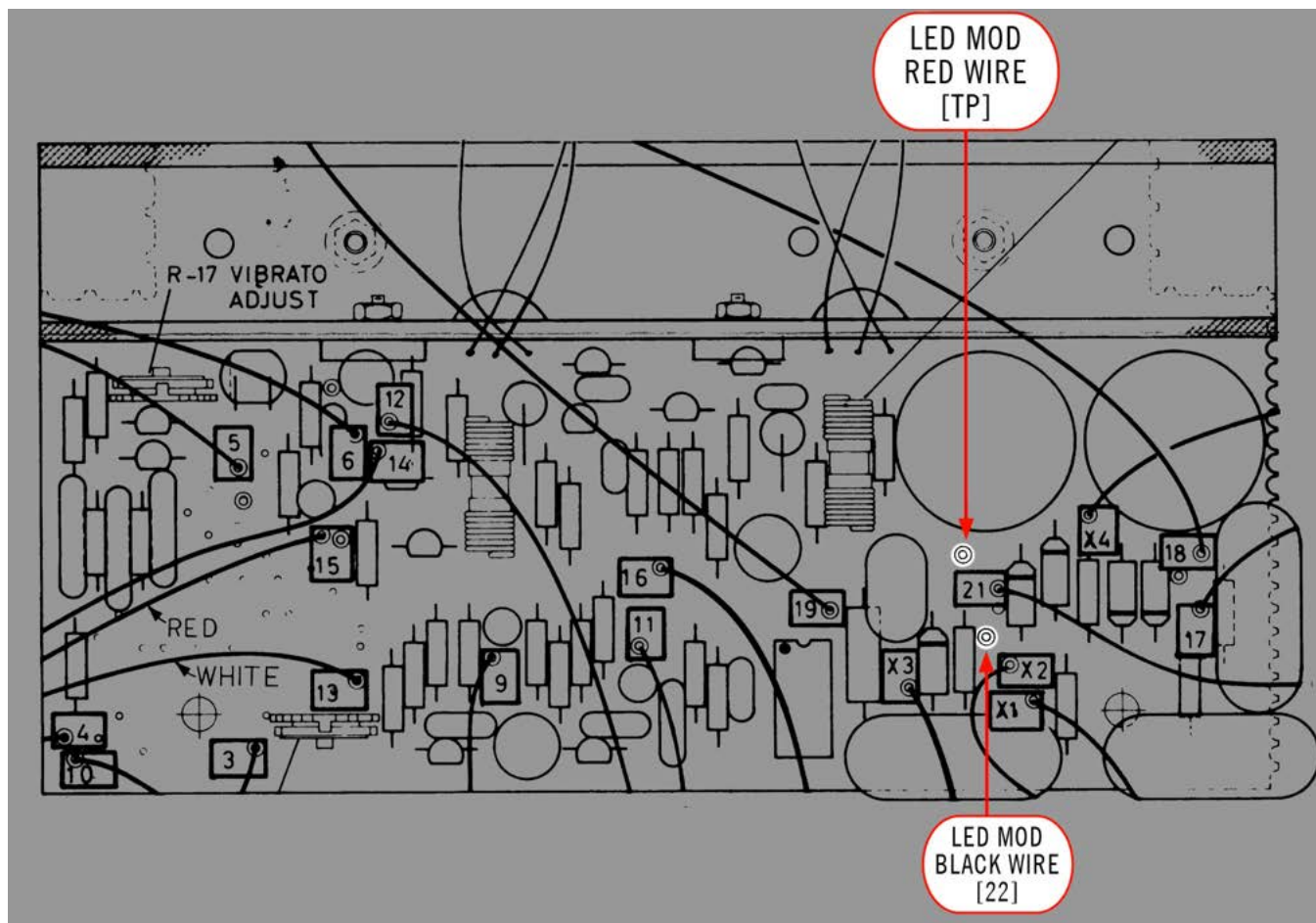


Wurlitzer 200 / 200A
LED MOD

TABLE OF CONTENTS

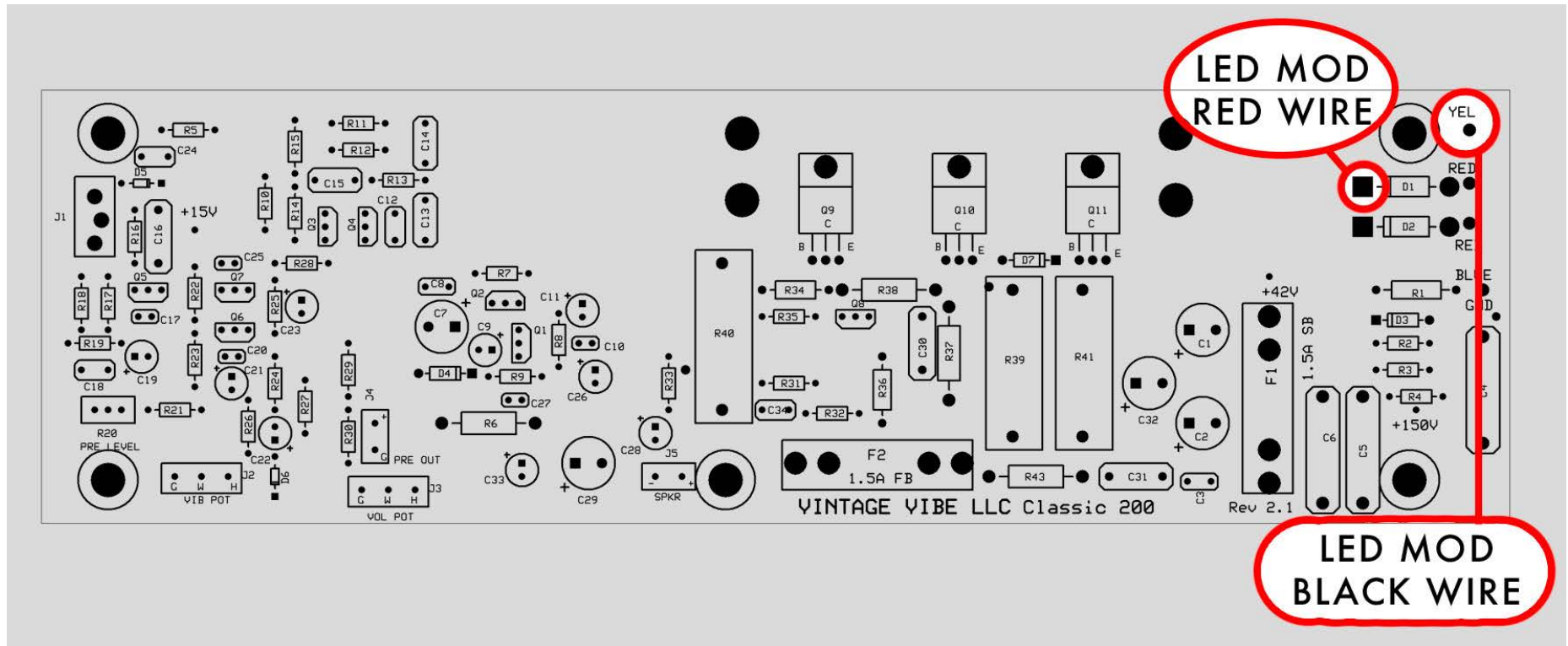
<i>MODEL 200 VINTAGE AMPLIFIER.....</i>	<i>PAGE 2</i>
<i>MODEL 200A VINTAGE AMPLIFIER.....</i>	<i>PAGE 3</i>
<i>VINTAGE VIBE CLASSIC 200 AMP.....</i>	<i>PAGE 4</i>
<i>VINTAGE VIBE 200A AMP.....</i>	<i>PAGE 5</i>
<i>LED MOD INSTALLATION.....</i>	<i>PAGE 6</i>

MODEL 200A VINTAGE AMPLIFIER



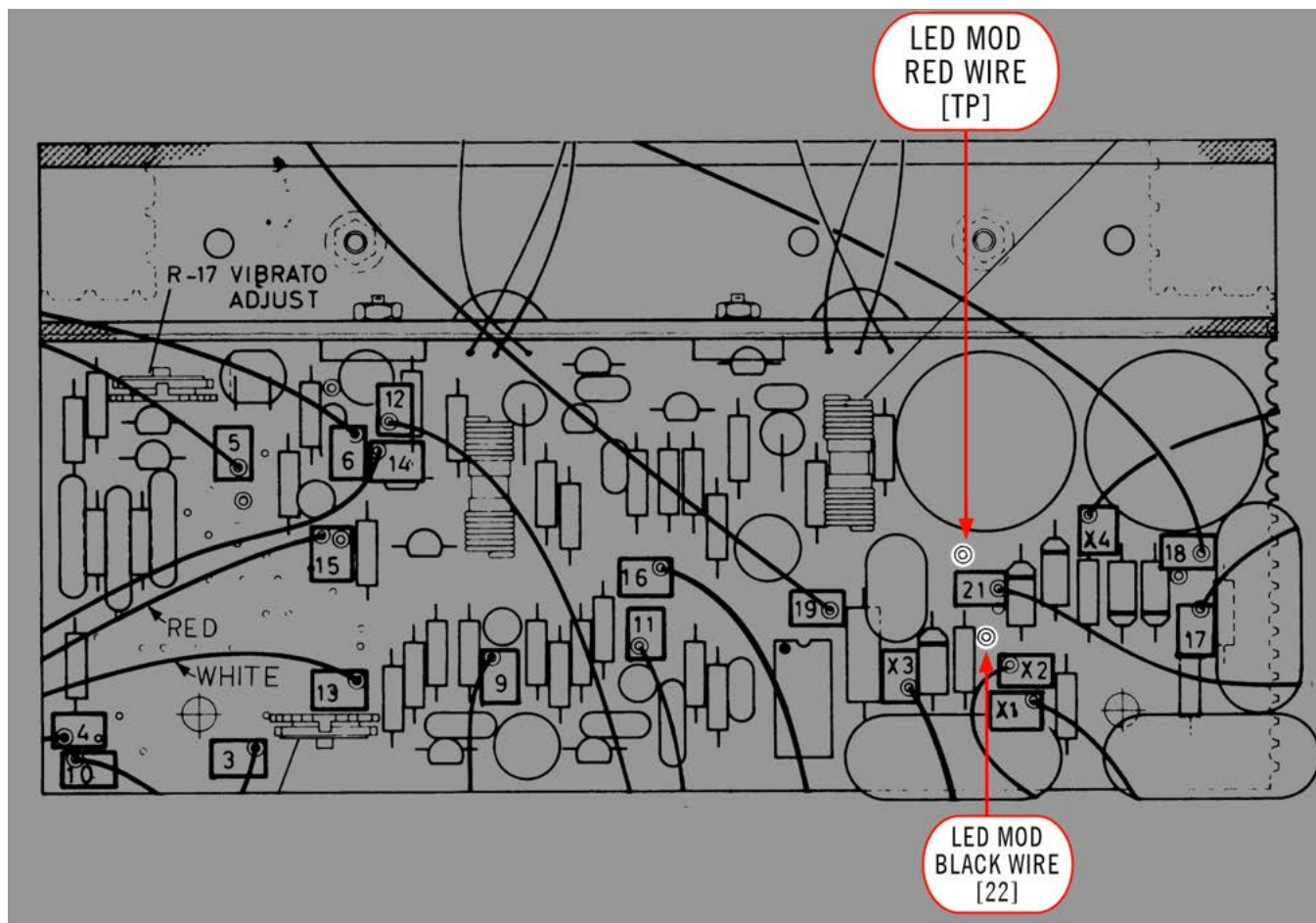
1. Unplug piano from wall outlet and ensure all voltage is drained from circuit before installation.
2. Detach the stock neon bulb from the terminal strip. You can desolder or simply clip the wires at the terminal strip.
3. Remove the neon bulb and retention clip from the control bracket and any excess glue.
4. Drill out the control bracket hole to 1/4" diameter. Be sure to remove all swarf from the drilling process (It is a good idea to utilize a vacuum whilst drilling).
5. Install the LED bezel through the front of the bracket.
6. Install the LED into the bezel from the rear. Ensure the PCB solder pads do not touch the bracket.
7. Run the wires at the rear of the rail to the right, behind the PCB and heatsink.
8. Solder the red wire from the LED module to the location shown in the diagram above.
9. Solder the black wire from the LED module to the location shown in the diagram above.

VINTAGE VIBE CLASSIC 200 AMPLIFIER



1. Unplug piano from wall outlet and ensure all voltage is drained from circuit before installation.
2. Detach the stock neon bulb from the terminal strip. You can desolder or simply clip the wires at the terminal strip.
3. Remove the neon bulb and retention clip from the control bracket and any excess glue.
4. Drill out the control bracket hole to 1/4" diameter. Be sure to remove all swarf from the drilling process (It is a good idea to utilize a vacuum whilst drilling).
5. Install the LED bezel through the front of the bracket.
6. Install the LED into the bezel from the rear. Ensure the PCB solder pads do not touch the bracket.
7. Run the wires at the rear of the rail to the right, behind the PCB and heatsink.
8. Solder the red wire from the LED module to the location shown in the diagram above.
9. Solder the black wire from the LED module to the location shown in the diagram above.

MODEL 200A VINTAGE AMPLIFIER



1. Unplug piano from wall outlet and ensure all voltage is drained from circuit before installation.
2. Detach the stock neon bulb from the terminal strip. You can desolder or simply clip the wires at the terminal strip.
3. Remove the neon bulb and retention clip from the control bracket and any excess glue.
4. Drill out the control bracket hole to 1/4" diameter. Be sure to remove all swarf from the drilling process (It is a good idea to utilize a vacuum whilst drilling).
5. Install the LED bezel through the front of the bracket.
6. Install the LED into the bezel from the rear. Ensure the PCB solder pads do not touch the bracket.
7. Run the wires at the rear of the rail to the right, behind the PCB and heatsink.
8. Solder the red wire from the LED module to the location shown in the diagram above.
9. Solder the black wire from the LED module to the location shown in the diagram above.

LED MOD INSTALLATION



1. Remove the neon bulb and retaining clip (Twist and Pull)
2. Remove the glue and all traces of adhesives



3. Drill out the hole with a 1/4" bit and remove any burrs.



4. Install LED bezel through the front of the bracket and insert the LED into the bezel from the rear. Ensure the PCB solder pads do not touch the bracket.