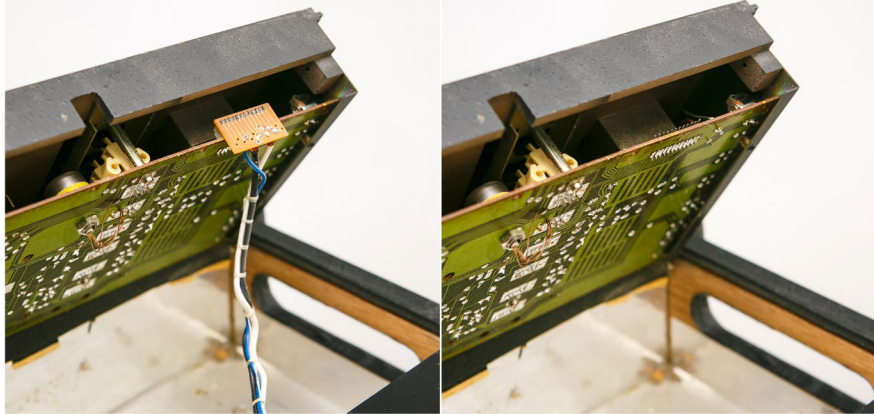




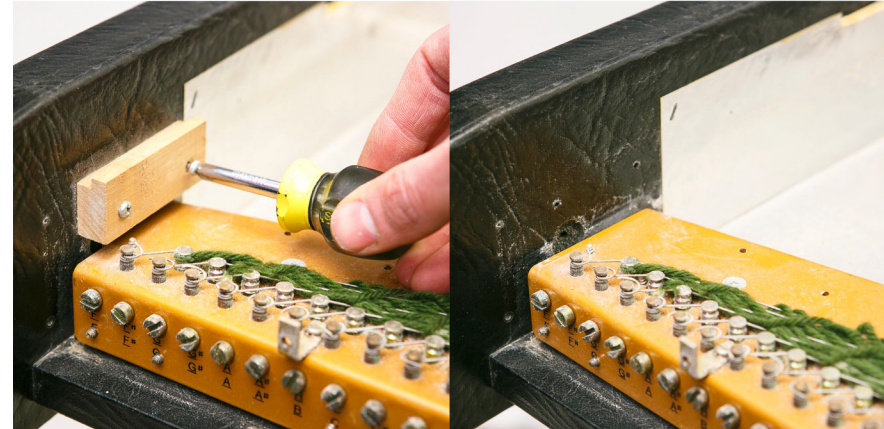
VINTAGE VIBE
ELECTRIC PIANO CO.



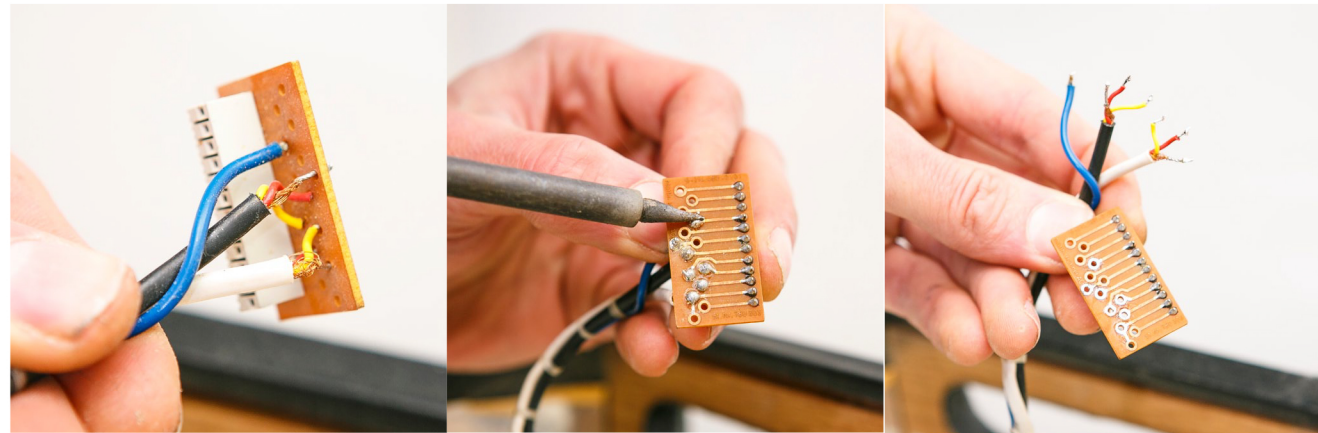
VIBANET PREAMP: E7 INSTALLATION



REMOVE PREAMP HOUSING AND UNPLUG PICKUP WIRING PCB FROM MAIN PCB

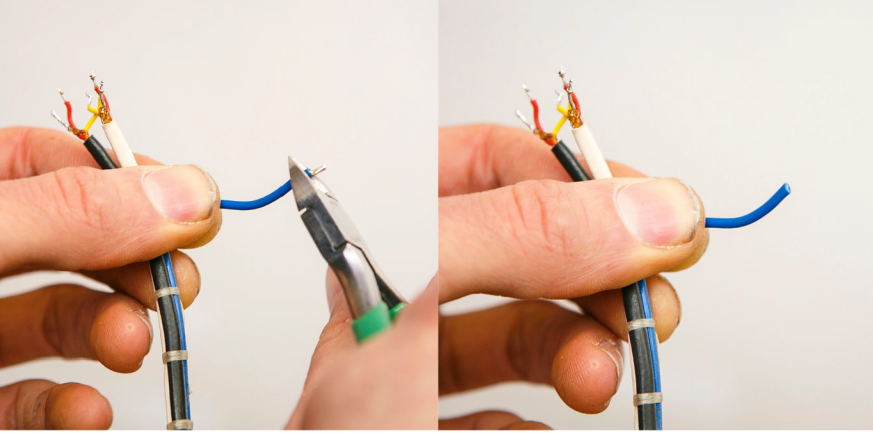


UNSCREW AND REMOVE LEFT FRONT SUPPORT BLOCK FROM BASE

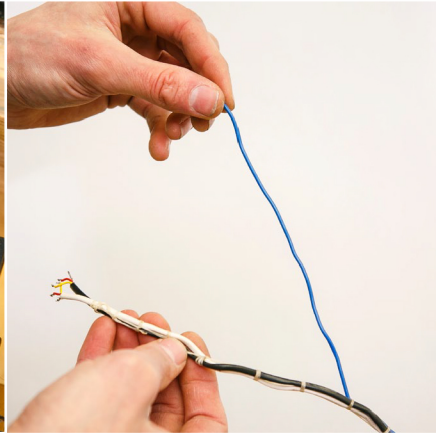
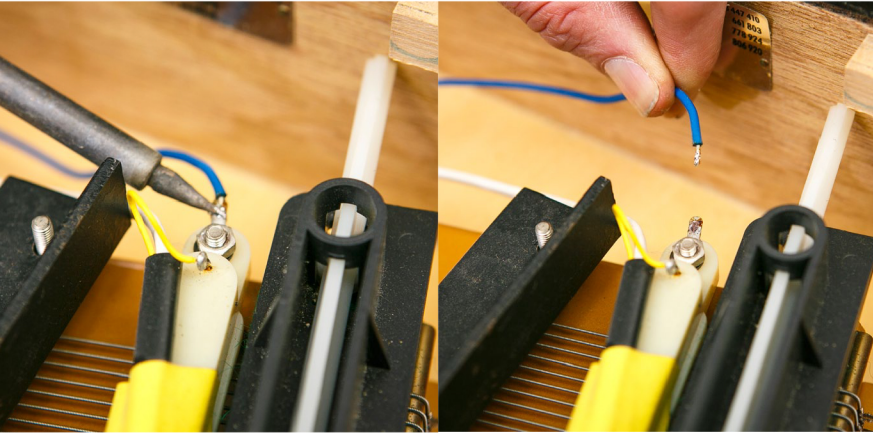


DESOLDER WIRES FROM PICKUP WIRING PCB.*

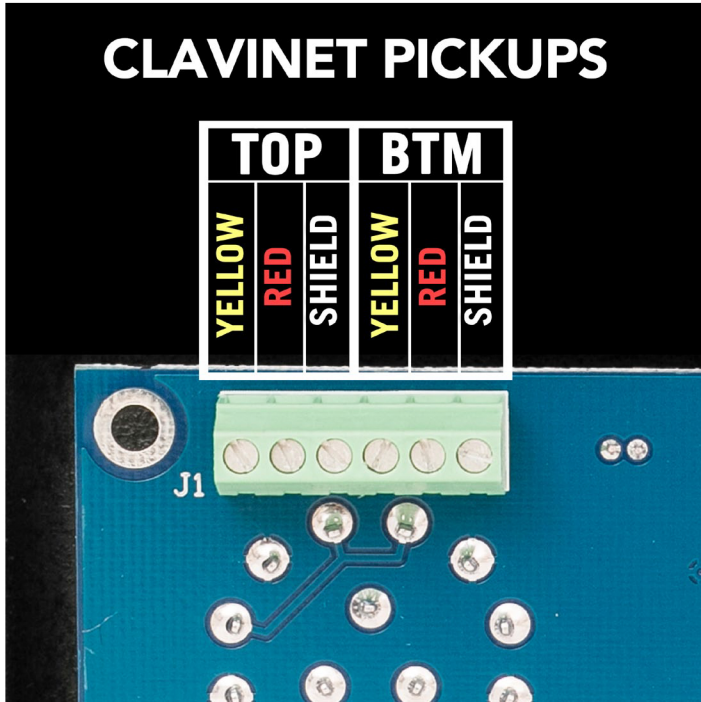
* WE HAVE INCLUDED A DIAGRAM AT THE END OF THIS DOCUMENT SHOULD YOU EVER WISH TO REINSTALL AN ORIGINAL E7 PREAMP



THE BLUE WIRE IS A GROUND WIRE UNNECESSARY FOR THIS INSTALLATION. YOU MAY EITHER CLIP IT BACK TO PREVENT ANY POSSIBLE SHORT OR GO AHEAD AND REMOVE IT ALL TOGETHER.

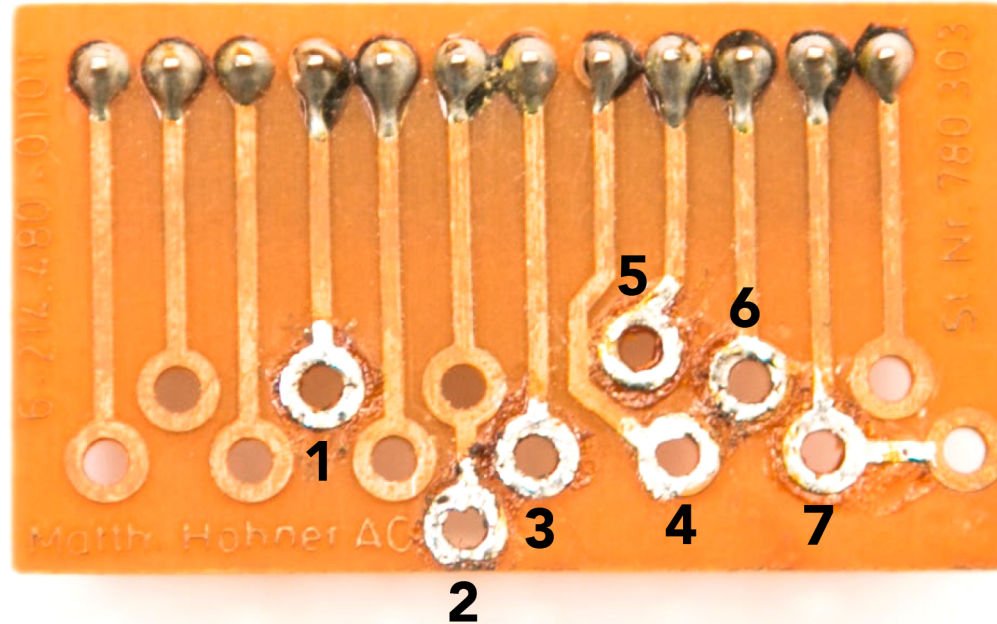


VIBANET E7 WIRING DIAGRAM



- 1) ENSURE THAT SUFFICIENT WIRE IS INSERTED INTO THE TERMINALS AND NOT WIRE INSULATION.
- 2) ENSURE THAT SCREWS ARE TIGHTENED BUT DO NOT OVER-TORQUE.
- 3) THE POWER & OUTPUT CONNECTORS ARE DESIGNED TO MATE WITH THE PCB SOCKET IN ONE DIRECTION ONLY.
- 4) WHEN INSTALLED PROPERLY THE CONNECTOR WILL "LOCK" INTO PLACE AND REQUIRE VERY LITTLE FORCE.

E7 PICKUP WIRING PCB

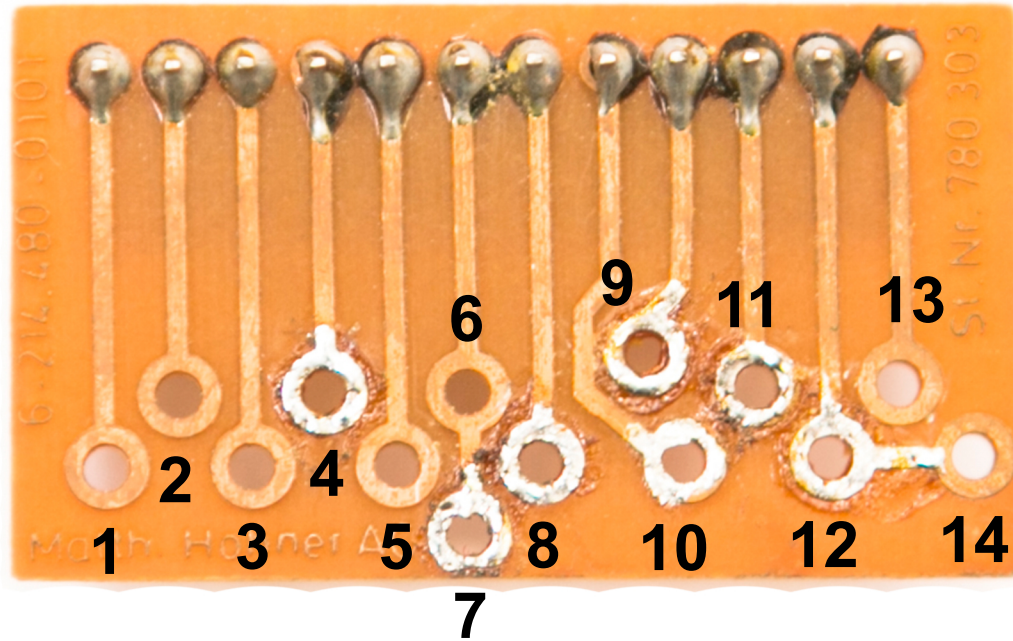


1. Blue Ground Wire to Top Pickup Ground Lug

- 2. Bottom Pickup Shield
- 3. Bottom Pickup Red Wire
- 5. Bottom pickup Yellow Wire

- 4. Top Pickup Yellow Wire
- 6. Top Pickup Red Wire
- 7. Top Pickup Shield

PIANET DUO PICKUP WIRING



- 1. Top Pickup Split Tap
- 2. Top Pickup Split Tap Shield

- 3. Bottom Pickup Split Tap
- 4. Bottom Pickup Split Tap Shield

- 5. Pianet Pickup Split Tap
- 6. Shield

- 7. Bottom Pickup Shield
- 8. Bottom Pickup Red Wire
- 9. Bottom Pickup Yellow Wire

- 10. Top Pickup Yellow Wire
- 11. Top Pickup Red Wire
- 12. Top Pickup Shield

- 13. Pianet Pickup Treble End Signal
- 14. Pianet Pickup Treble End Signal Shield