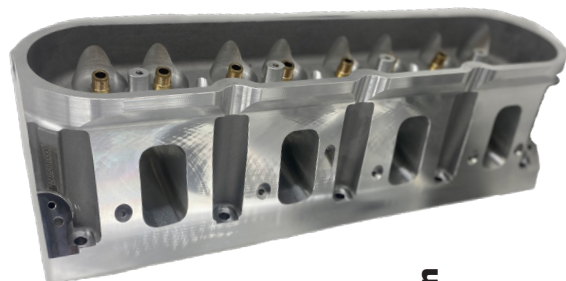




# FACTORY MAST “MAST MUTANT” CYLINDER HEAD



## FACTORY MAST CNC PORTED MEDIUM BORE LS3 CYLINDER HEAD



### AVAILABLE PART NUMBERS

CH-LSX-302531 - MUTANT - BARE HEAD - SINGLE

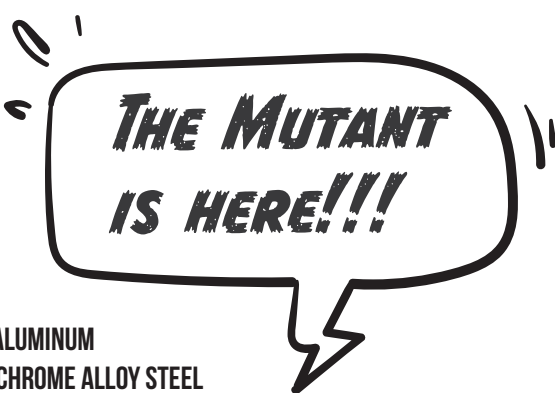
CH-CH-LSX-302532 - MUTANT - HEADS WITH STAINLESS VALVES - PAIR

CH-LSX-302533 - MUTANT - HEADS WITH TITANIUM VALVES & STAINLESS EXHAUST

### AIRFLOW CFM DATA

CH-LSX-302531 - FACTORY MAST CNC PORTED MEDIUM BORE LS3

Port Location	0.100	0.200	0.300	0.400	0.500	0.600	0.700	0.800
INTAKE	66	140	215	269	314	347	372	357
EXHAUST	52	95	138	175	196	205	211	216



### CYLINDER HEAD SPECS

#### DIMENSION SPECS

- BORE SIZE: **4.000 (+)**
- WEIGHT: **28.5 LBS.**
- INTAKE VALVE SIZE: **2.165"**
- EXHAUST VALVE SIZE: **1.600"**
- VALVE STEM DIAMETER: **5/16"**
- VALVE LENGTH: **5.450"**
- VALVE ANGLE: **11°**
- VALVE SPRING POCKET DIAMETER: **1.580"**
- VALVE SPRING INSTALL HEIGHT: **1.800"**
- HEAD STUD SIZE: **.4375"**
- VALVE GUIDE OD: **.565"**
- VALVE JOB TYPE: **5 ANGLE**

#### MATERIALS SPECS

- CYLINDER HEAD MATERIAL: **A356-T6 ALUMINUM**
- INTAKE VALVE SEAT MATERIAL: **HIGH CHROME ALLOY STEEL**
- EXHAUST VALVE SEAT MATERIAL: **HIGH CHROME ALLOY STEEL**
- DECK THICKNESS: **.750"**
- ROCKER STAND TYPE: **MAST BILLET**
- ROCKER ARM TYPE: **OE LS3 1.7 OR AFTERMARKET**
- GUIDE MATERIAL: **BRONZE**

#### GENERAL SPECS

- ROCKER STAND TYPE: **MAST BILLET**
- ROCKER STANDS INCLUDED: **YES**
- ROCKER STAND DOWELS INCLUDED: **YES**
- USES STOCK ROCKER BOLTS: **NO**
- ROCKER BOLTS INCLUDED: **NO**
- HEAD BOLT QTY: **6 BOLT STYLE**
- VALVE COVER RAIL HEIGHT: **+ 1/2 INCH**
- CAN USE OE VALVE COVER: **YES**

#### AIR FLOW & PERFORMANCE CRITERIA

- INTAKE MAX. FLOW: **358 CFM @ 7.000"**
- EXHAUST MAX. FLOW: **230 CFM @ 7.000"**
- INTAKE AVERAGE FLOW: **236 CFM**
- EXHAUST AVERAGE FLOW: **160 CFM**
- INTAKE PORT VOLUME: **275CC**
- EXHAUST PORT VOLUME: **106CC**
- STANDARD CHAMBER VOLUME: **70CC**
- PORT TYPE: **CNC PORTED**

#### CUSTOM OPTIONS AVAILABLE

- CUSTOM CHAMBER SIZE
- CHAMBER SOFTENING
- 1/2" HEAD STUDS