



LT BLACK LABEL HEAD - MEDIUM BORE

BLACK LABEL LT1 MEDIUM BORE HEADS

LT1 BLACK LABEL HEAD - 4.065" (+) BORE - FOR DIRECT INJECTION

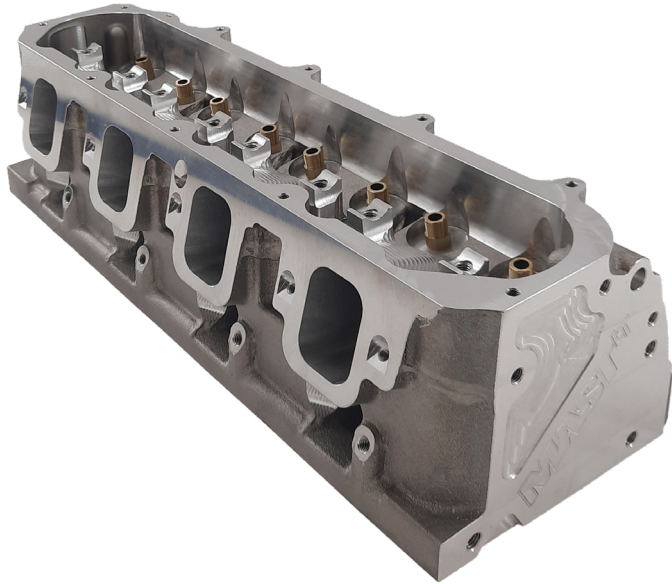
AVAILABLE PART NUMBERS

CH-LTX-600197 - BARE HEAD (SINGLE)
CH-LTX-600224 - HEAD (PAIR) W/ STAINLESS STEEL VALVES
CH-LTX-600251 - HEAD (PAIR) W/ TITANIUM INTAKE & STAINLESS STEEL EXHAUST

LT1 BLACK LABEL HEAD - 4.065" (+) BORE - PORT INJECTION

AVAILABLE PART NUMBERS

CH-LTX-600198 - BARE HEAD (SINGLE)
CH-LTX-600225 - HEAD (PAIR) W/ STAINLESS STEEL VALVES
CH-LTX-600252 - HEAD (PAIR) W/ TITANIUM INTAKE & STAINLESS STEEL EXHAUST



AIRFLOW CFM DATA

CH-LTX-600197 - LT BLACK LABEL HEAD - 4.065" (+) - FOR DIRECT INJECTION - BARE

Port Location	Bore Size						
	0.100	0.200	0.300	0.400	0.500	0.600	0.700
INTAKE	70	140	216	280	330	341	355
EXHAUST	50	102	145	193	209	220	224

CYLINDER HEAD SPECS

DIMENSION SPECS

- BORE SIZE: **4.065"**
- WEIGHT: **30 LBS.**
- INTAKE VALVE SIZE: **2.165"**
- EXHAUST VALVE SIZE: **1.600"**
- VALVE STEM DIA.: **5/16"**
- VALVE LENGTH: **5.550"**
- INTAKE VALVE ANGLE: **12.5°X2.5°**
- EXHAUST VALVE ANGLE: **12°X2.5°**
- VALVE SPRING POCKET DIA.: **1.400"**
- VALVE SPRING INSTALL HEIGHT: **1.800"**
- HEAD STUD SIZE: **.530"**
- VALVE GUIDE OD: **.570"**
- VALVE JOB TYPE: **NEWEN CNC 5 ANGLE**

AIRFLOW SPECS

- CHAMBER SIZE: **60CC**
- INTAKE PORT VOLUME: **292CC**
- EXHAUST PORT VOLUME: **111CC**
- PORT TYPE: **CNC**

MATERIAL SPECS

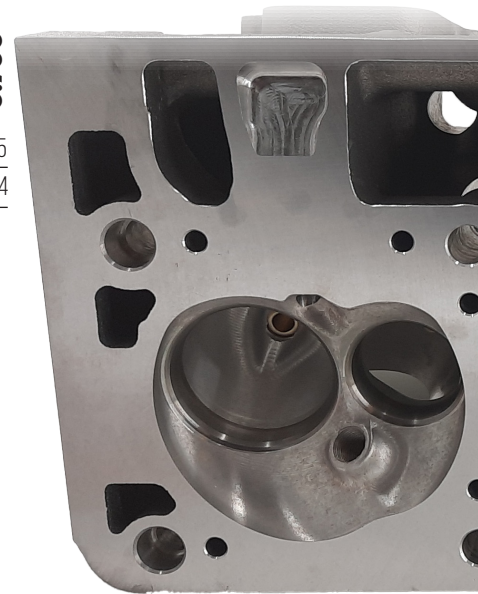
- CYLINDER HEAD MATERIAL: **A356-T6 ALUMINUM**
- INTAKE VALVE SEAT MATERIAL: **DUCTILE IRON**
- EXHAUST VALVE SEAT MATERIAL: **DUCTILE IRON**
- DECK THICKNESS: **.750"**
- ROCKER STAND TYPE: **PEDESTAL**
- ROCKER ARM TYPE: **LS7 EXHAUST 1.8 RATIO**
- VALVE GUIDE MATERIAL: **PHOSPHOR BRONZE**

GENERAL SPECS

- ROCKER STAND: **BUILT-IN**
- ROCKER STAND DOWELS: **N/A**
- USES STOCK ROCKER BOLTS? **NO**
- ROCKER BOLTS: **NOT INCLUDED**
- HEAD BOLT QTY.: **4-BOLT STYLE**
- VALVE COVER RAIL HEIGHT: **+1/2"**
- CAN USE OE VALVE COVER? **YES**

CUSTOM OPTIONS AVAILABLE

- HEAD ASSEMBLY
- CHAMBER SOFTENING
- CUSTOM CHAMBER SIZING
- 1/2 HEAD STUD CLEARANCE
- COPPER INTAKE & EXHAUST VALVE SEATS



CYLINDER HEAD ADD-ONS

VALVE SPRING KITS

VS-LSX-100131 - PREMIUM DUAL VALVE SPRING & TITANIUM RETAINER KIT

VS-LSX-100134 - DUAL VALVE SPRING & TITANIUM RETAINER KIT - 0.750 LIFT

ROCKER KITS

RK-LTX-600267 - LTX ROCKERS W/ CHE TRUNNION KIT & ROCKER BOLTS

AVAILABLE WITH PORT FUEL INJECTION OR DIRECT INJECTION

