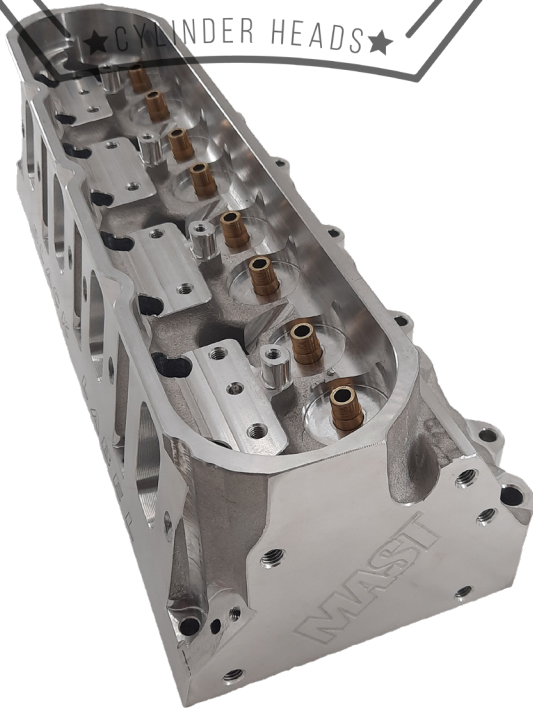




LS7 BLACK LABEL HEAD - LARGE BORE

BLACK LABEL 305CC LARGE BORE LS7

BLACK LABEL - LS7 305CC 4.125"(+) BORE



AVAILABLE PART NUMBERS

CH-LSX-600195	- BARE HEAD (SINGLE)
CH-LSX-600196	- BARE HEAD (SINGLE) - JESEL PATTERN
CH-LSX-600216	- HEAD (PAIR) W/ STAINLESS STEEL VALVES
CH-LSX-600217	- HEAD (PAIR) W/ STAINLESS STEEL VALVES - JESEL
CH-LSX-600218	- HEAD (PAIR) W/ TALL STAINLESS STEEL VALVES, SOLID ROLLER
CH-LSX-600219	- HEAD (PAIR) W/ TALL STAINLESS STEEL VALVES, SOLID ROLLER, JESEL
CH-LSX-600243	- HEAD (PAIR) W/ TITANIUM INTAKE & STAINLESS STEEL EXHAUST
CH-LSX-600244	- HEAD (PAIR) W/ TITANIUM INTAKE & STAINLESS STEEL EXHAUST, JESEL
CH-LSX-600245	- HEAD (PAIR) W/ TITANIUM INTAKE & STAINLESS STEEL EXHAUST, SOLID ROLLER
CH-LSX-600246	- HEAD (PAIR) W/ TITANIUM INTAKE & STAINLESS STEEL EXHAUST, SOLID ROLLER, JESEL

AIRFLOW CFM DATA

CH-LSX-600195 - LS7 305CC - 4.125"(+) BORE

Port Location	Flow Rate						
	0.100	0.200	0.300	0.400	0.500	0.600	0.700
INTAKE	68	142	219	292	346	382	405
EXHAUST	56	108	152	200	228	244	254

CYLINDER HEAD SPECS

DIMENSION SPECS

- BORE SIZE: **4.125"**
- WEIGHT: **27.5 LBS.**
- INTAKE VALVE SIZE: **2.250"**
- EXHAUST VALVE SIZE: **1.600"**
- VALVE STEM DIA.: **5/16"**
- VALVE LENGTH: **5.450" STD, 5.550" TALL**
- VALVE ANGLE: **12°**
- VALVE SPRING POCKET DIA.: **1.650"**
- VALVE SPRING INSTALL HEIGHT: **1.800"**
- HEAD STUD SIZE: **.493"**
- VALVE GUIDE OD: **.502"**
- VALVE JOB TYPE: **NEWEN CNC 5 ANGLE**

AIRFLOW SPECS

- CHAMBER SIZE: **70CC**
- INTAKE PORT VOLUME: **305CC**
- EXHAUST PORT VOLUME: **106CC**
- PORT TYPE: **CNC**

MATERIAL SPECS

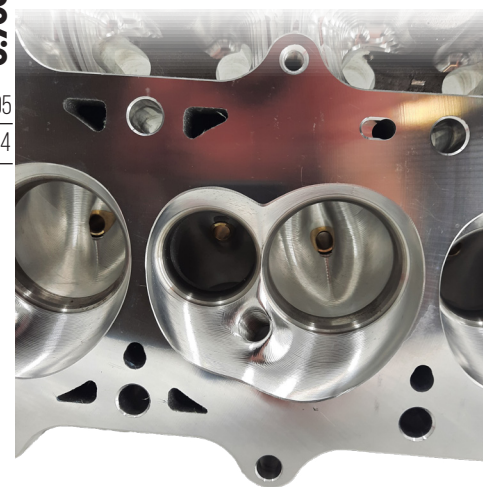
- CYLINDER HEAD MATERIAL: **A356-T6 ALUMINUM**
- INTAKE VALVE SEAT MATERIAL: **DUCTILE IRON**
- EXHAUST VALVE SEAT MATERIAL: **DUCTILE IRON**
- DECK THICKNESS: **.750"**
- ROCKER STAND TYPE: **MAST BILLET**
- ROCKER ARM TYPE: **OE LS7 1.8 OR AFTERMARKET**
- VALVE GUIDE MATERIAL: **PHOSPHOR BRONZE**

GENERAL SPECS

- ROCKER STAND: **INCLUDED**
- ROCKER STAND DOWELS: **INCLUDED**
- USES STOCK ROCKER BOLTS? **NO**
- ROCKER BOLTS: **NOT INCLUDED**
- HEAD BOLT QTY.: **6 BOLT STYLE**
- VALVE COVER RAIL HEIGHT: **+1/2"**
- CAN USE OE VALVE COVER? **YES**

CUSTOM OPTIONS AVAILABLE

- HEAD ASSEMBLY
- CHAMBER SOFTENING
- CUSTOM CHAMBER SIZING
- 1/2 HEAD STUD CLEARANCE
- COPPER INTAKE & EXHAUST VALVE SEATS



CYLINDER HEAD ADD-ONS

VALVE SPRING KITS

VS-LSX-100131 - PREMIUM DUAL VALVE SPRING & TITANIUM RETAINER KIT

VS-LSX-100134 - DUAL VALVE SPRING & TITANIUM RETAINER KIT - 0.750 LIFT

VS-UNV-100138 - DRAG RACE & MARINE 1.525 VALVE SPRING KIT - SOLID ROLLER LSX

VS-UNV-100139 - DRAG RACE & MARINE 1.525 VALVE SPRING KIT - SOLID ROLLER LSX - POLISHED

ROCKER KITS

RK-LS7-600269 - LS7 ROCKER KIT W/ CHE TRUNNION & ROCKER BOLTS

RK-LSX-981110 - JESEL ROCKER SYSTEM - LARGE BORE "INLINE PATTERN" - 1.7 RATIO

RK-LSX-600303 - JESEL ROCKER SYSTEM - LARGE BORE "INLINE PATTERN" - 1.8 RATIO

RK-LSX-600301 - JESEL SPORTSMAN STEEL ROCKER SYSTEM - LARGE BORE "INLINE PATTERN" - 1.7 RATIO

RK-LSX-600302 - JESEL SPORTSMAN STEEL ROCKER SYSTEM - LARGE BORE "INLINE PATTERN" - 1.8 RATIO

RK-LSX-981113 - JESEL SPORTSMAN STEEL ROCKER SYSTEM - LARGE BORE "JESEL PATTERN" - 1.7 RATIO

RK-LSX-981114 - JESEL SPORTSMAN STEEL ROCKER SYSTEM - LARGE BORE "JESEL PATTERN" - 1.8 RATIO

