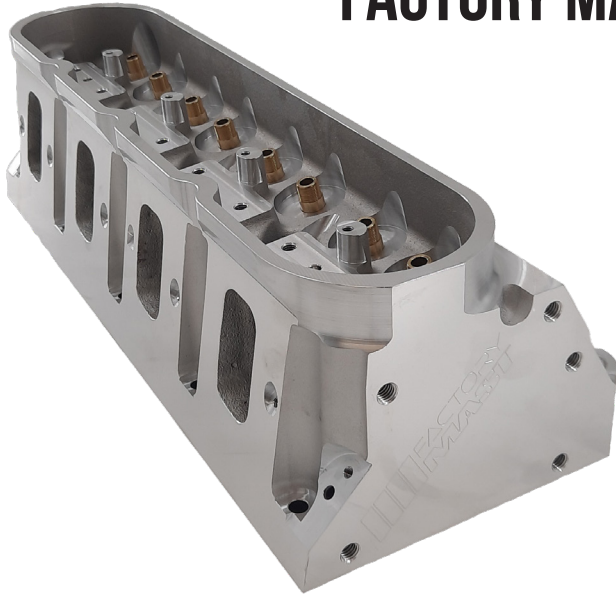




FACTORY MAST AS CAST LS7 CYLINDER HEAD



FACTORY MAST CASTING LARGE BORE LS7

FACTORY MAST CYLINDER HEAD - NOW AVAILABLE USING BUDGET FRIENDLY "AS CAST" TECHNOLOGY!

LS7 LARGE BORE - 4.125" (+) BORE - AS CAST PORT

AVAILABLE PART NUMBERS

CH-LSX-302449 - BARE HEAD (SINGLE)

CH-LSX-302453 - HEAD (PAIR) W/ STAINLESS STEEL VALVES

CH-LSX-302457 - HEAD (PAIR) W/ TITANIUM INTAKE & STAINLESS STEEL EXHAUST

AIRFLOW CFM DATA

CH-LSX-302449 - FACTORY MAST CASTING LARGE BORE LS7

Port Location	0.100	0.200	0.300	0.400	0.500	0.600	0.700	0.800	0.900	1.000
INTAKE	64	145	220	285	336	364	355	364	375	375
EXHAUST	53	109	157	181	188	192	194	193	192	192

CYLINDER HEAD SPECS

DIMENSION SPECS

- WEIGHT: **28 LBS.**
- INTAKE VALVE SIZE: **2.250"**
- EXHAUST VALVE SIZE: **1.600"**
- VALVE STEM DIA.: **5/16"**
- VALVE LENGTH: **5.450"**
- VALVE ANGLE: **12°**
- VALVE SPRING POCKET DIA.: **1.580"**
- VALVE SPRING INSTALL HEIGHT: **1.800"**
- HEAD STUD SIZE: **.4375"**
- VALVE GUIDE OD: **.565"**
- VALVE JOB TYPE: **5 ANGLE**

AIRFLOW SPECS

- CHAMBER SIZE: **71CC**
- INTAKE PORT VOLUME: **292CC**
- EXHAUST PORT VOLUME: **104CC**
- PORT TYPE: **AS CAST**

MATERIAL SPECS

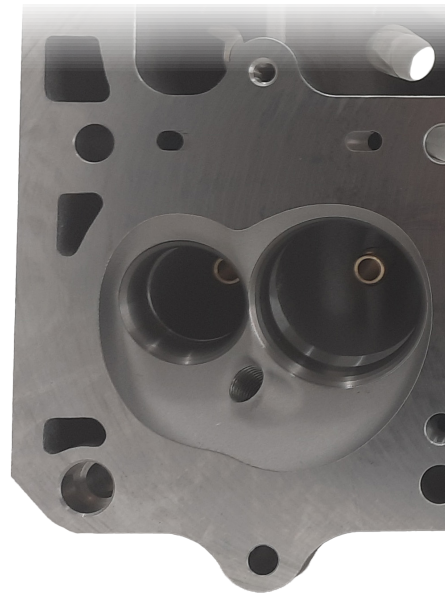
- CYLINDER HEAD MATERIAL: **A356-T6 ALUMINUM**
- INTAKE VALVE SEAT MATERIAL: **HIGH CHROME ALLOY STEEL**
- EXHAUST VALVE SEAT MATERIAL: **HIGH CHROME ALLOY STEEL**
- DECK THICKNESS: **.750"**
- ROCKER STAND TYPE: **MAST BILLET**
- ROCKER ARM TYPE: **OE LS7 1.8 OR AFTERMARKET**
- GUIDE MATERIAL: **BRONZE**

GENERAL SPECS

- ROCKER STAND: **INCLUDED**
- ROCKER STAND DOWELS: **INCLUDED**
- USES STOCK ROCKER BOLTS?: **NO**
- ROCKER BOLTS: **NOT INCLUDED**
- HEAD BOLT QTY.: **6 BOLT STYLE**
- VALVE COVER RAIL HEIGHT: **+1/2"**
- CAN USE OE VALVE COVER?: **YES**

CUSTOM OPTIONS AVAILABLE

- HEAD ASSEMBLY



CYLINDER HEAD ADD-ONS

VALVE SPRING KITS

VS-LSX-100131 - LS & LT - DUAL VALVE SPRING & TITANIUM RETAINER KIT - 0.660 LIFT

VS-LSX-100134 - LS & LT - DUAL VALVE SPRING & TITANIUM RETAINER KIT - 0.750 LIFT

ROCKER KITS

RK-LS7-600269 - LS7 ROCKER KIT W/ CHE TRUNNION & ROCKER BOLTS

RK-LSX-981110 - JESEL ROCKER SYSTEM - LARGE BORE "INLINE PATTERN" - 1.7 RATIO

RK-LSX-600303 - JESEL ROCKER SYSTEM - LARGE BORE "INLINE PATTERN" - 1.8 RATIO

RK-LSX-600301 - JESEL SPORTSMAN STEEL ROCKER SYSTEM - LARGE BORE "INLINE PATTERN" - 1.7 RATIO

RK-LSX-600302 - JESEL SPORTSMAN STEEL ROCKER SYSTEM - LARGE BORE "INLINE PATTERN" - 1.8 RATIO

