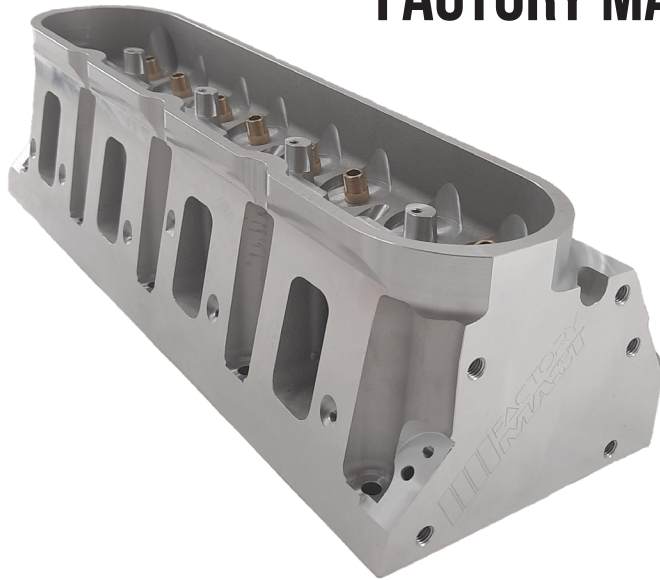




# FACTORY MAST AS CAST LS3 CYLINDER HEAD



## FACTORY MAST CASTING MEDIUM BORE LS3

FACTORY MAST CYLINDER HEAD - NOW AVAILABLE USING BUDGET FRIENDLY "AS CAST" TECHNOLOGY!

LS3 255CC 4.000" (+) BORE - AS CAST PORT

### AVAILABLE PART NUMBERS

CH-LSX-302447 - BARE HEAD (SINGLE)

CH-LSX-302451 - HEAD (PAIR) W/ STAINLESS STEEL VALVES

CH-LSX-302455 - HEAD (PAIR) W/ TITANIUM INTAKE & STAINLESS STEEL EXHAUST

## AIRFLOW CFM DATA

CH-LSX-302447 - FACTORY MAST CASTING MEDIUM BORE LS3

Port Location	0.100	0.200	0.300	0.400	0.500	0.600	0.700	0.800
INTAKE	64	142	210	262	308	337	333	341
EXHAUST	55	105	148	178	189	195	200	204

## CYLINDER HEAD SPECS

### DIMENSION SPECS

- WEIGHT: **28 LBS**
- INTAKE VALVE SIZE: **2.250"**
- EXHAUST VALVE SIZE: **1.600"**
- VALVE STEM DIA. : **5/16"**
- VALVE LENGTH: **5.450"**
- VALVE ANGLE: **11°**
- VALVE SPRING POCKET DIA. : **1.580"**
- VALVE SPRING INSTALL HEIGHT: **1.800"**
- HEAD STUD SIZE: **.4375"**
- VALVE GUIDE OD: **.565"**
- VALVE JOB TYPE: **5 ANGLE**

### AIRFLOW SPECS

- CHAMBER SIZE: **74 CC**
- INTAKE PORT VOLUME: **255 CC**
- EXHAUST PORT VOLUME: **70 CC**
- PORT TYPE: **AS CAST**

### MATERIAL SPECS

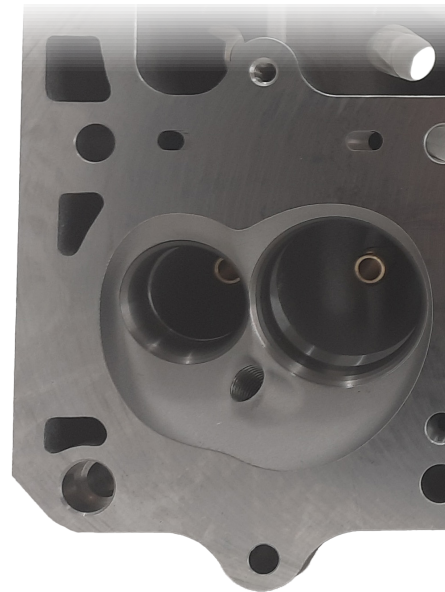
- CYLINDER HEAD MATERIAL: **A356-T6 ALUMINUM**
- INTAKE VALVE SEAT MATERIAL: **HIGH CHROME ALLOY STEEL**
- EXHAUST VALVE SEAT MATERIAL: **HIGH CHROME ALLOY STEEL**
- DECK THICKNESS: **.750"**
- ROCKER STAND TYPE: **MAST BILLET**
- ROCKER ARM TYPE: **OE LS3 1.7 OR AFTERMARKET**
- GUIDE MATERIAL: **BRONZE**

### GENERAL SPECS

- ROCKER STAND: **INCLUDED**
- ROCKER STAND DOWELS: **INCLUDED**
- USES STOCK ROCKER BOLTS?: **NO**
- ROCKER BOLTS: **NOT INCLUDED**
- HEAD BOLT QTY. : **6 BOLT STYLE**
- VALVE COVER RAIL HEIGHT: **+1/2"**
- CAN USE OE VALVE COVER?: **YES**

### CUSTOM OPTIONS AVAILABLE

- HEAD ASSEMBLY



# CYLINDER HEAD ADD-ONS

## VALVE SPRING KITS

VS-LSX-600294 - LS - PERFORMANCE BEEHIVE VALVE SPRING KIT - 0.625 LIFT

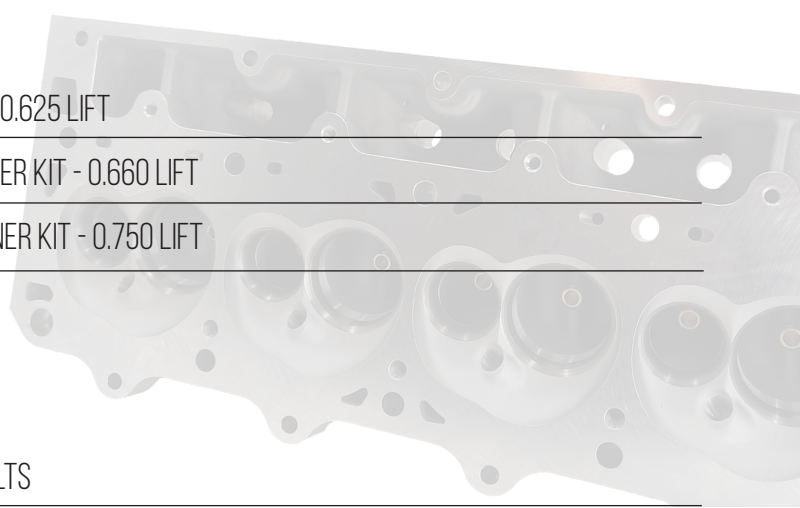
VS-LSX-100131 - LS & LT - DUAL VALVE SPRING & TITANIUM RETAINER KIT - 0.660 LIFT

VS-LSX-100134 - LS & LT - DUAL VALVE SPRING & TITANIUM RETAINER KIT - 0.750 LIFT

## ROCKER KITS

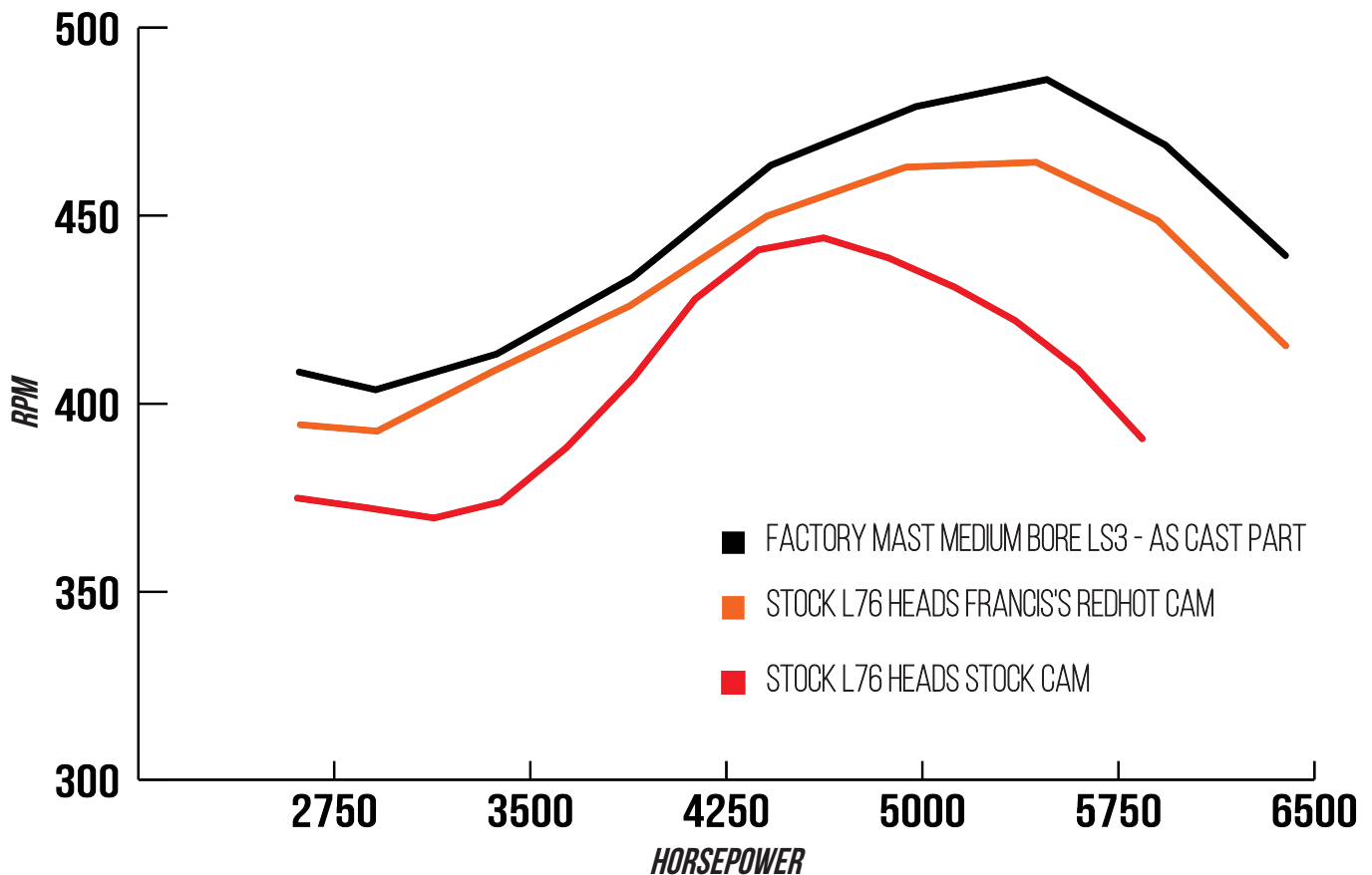
RK-LS3-600268 - LS3 ROCKER KIT W/ CHE TRUNNION & ROCKER BOLTS

RK-LSX-981111 - JESEL ROCKER SYSTEM - MEDIUM BORE "INLINE PATTERN"

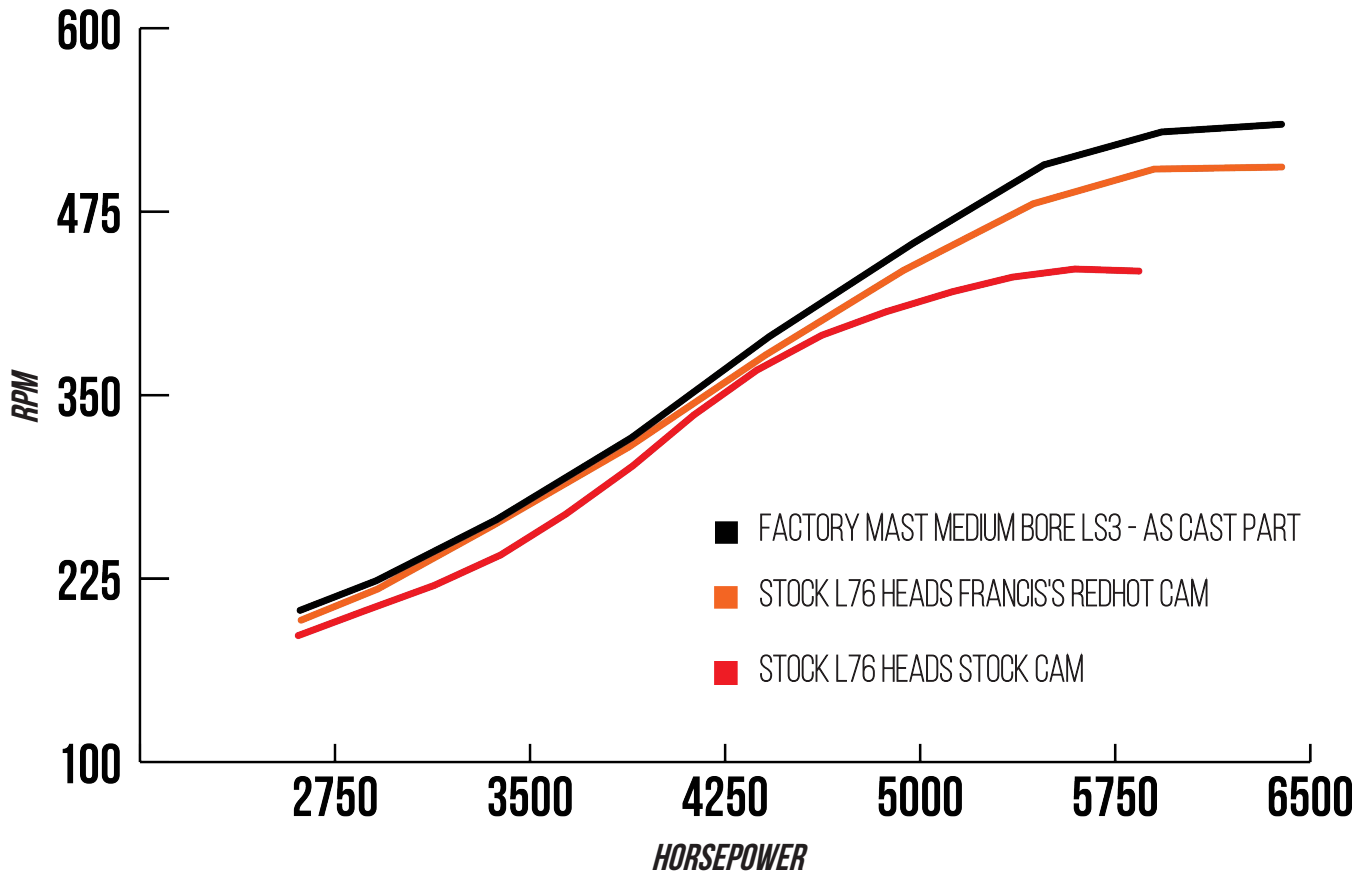


# PERFORMANCE TESTS

MEDIUM BORE CYLINDER HEAD TEST - STOCK L76 ENGINE CAM & HEAD TEST - TORQUE FT/LBS COMPARISON



MEDIUM BORE CYLINDER HEAD TEST - STOCK L76 ENGINE CAM & HEAD TEST - HORSE POWER COMPARISON



MEDIUM BORE CYLINDER HEAD TEST - STOCK L76 ENGINE CAM & HEAD SWAP TEST

