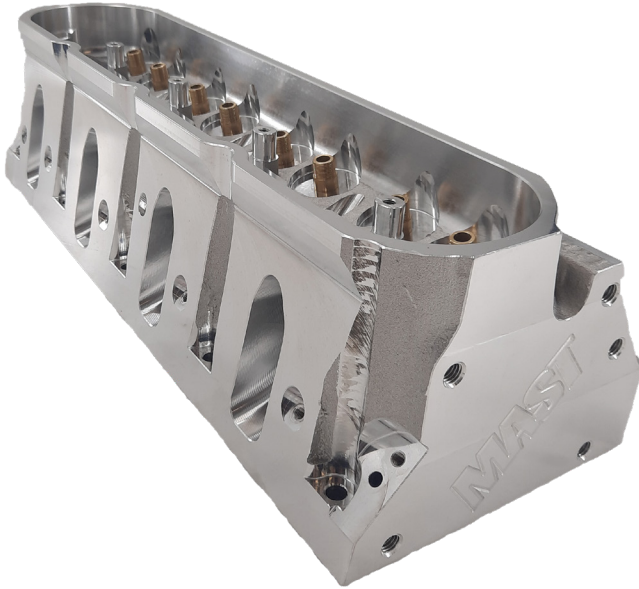




BLACK LABEL HEAD - LARGE BORE

BLACK LABEL 295CC LARGE BORE CATHEDRAL

BLACK LABEL - CATHEDRAL PORT 295CC 4.125"(+) BORE



AVAILABLE PART NUMBERS

| | |
|---------------|---|
| CH-LSX-600186 | - BARE HEAD (SINGLE) |
| CH-LSX-600187 | - BARE HEAD (SINGLE) - JESEL PATTERN |
| CH-LSX-600205 | - HEAD (PAIR) W/ STAINLESS STEEL VALVES |
| CH-LSX-600206 | - HEAD (PAIR) W/ STAINLESS STEEL VALVES - JESEL |
| CH-LSX-600207 | - HEAD (PAIR) W/ TALL STAINLESS STEEL VALVES, SOLID ROLLER |
| CH-LSX-600208 | - HEAD (PAIR) W/ TALL STAINLESS STEEL VALVES, SOLID ROLLER, JESEL |
| CH-LSX-600232 | - HEAD (PAIR) W/ TITANIUM INTAKE & STAINLESS STEEL EXHAUST |
| CH-LSX-600233 | - HEAD (PAIR) W/ TITANIUM INTAKE & STAINLESS STEEL EXHAUST, JESEL |
| CH-LSX-600234 | - HEAD (PAIR) W/ TITANIUM INTAKE & STAINLESS STEEL EXHAUST, SOLID ROLLER |
| CH-LSX-600235 | - HEAD (PAIR) W/ TITANIUM INTAKE & STAINLESS STEEL EXHAUST, SOLID ROLLER, JESEL |

AIRFLOW CFM DATA

CH-LSX-600186 - CATHEDRAL PORT 295CC - 4.125"(+) BORE

| Port Location | 0.100 | 0.200 | 0.300 | 0.400 | 0.500 | 0.600 | 0.700 |
|---------------|-------|-------|-------|-------|-------|-------|-------|
| INTAKE | 67 | 142 | 218 | 290 | 342 | 381 | 405 |
| EXHAUST | 60 | 110 | 151 | 201 | 225 | 239 | 248 |

CYLINDER HEAD SPECS

DIMENSION SPECS

- BORE SIZE: **4.125"**
- WEIGHT: **27.5 LBS.**
- INTAKE VALVE SIZE: **2.250"**
- EXHAUST VALVE SIZE: **1.600"**
- VALVE STEM DIA.: **5/16"**
- VALVE LENGTH: **5.450" STD, 5.550" TALL**
- VALVE ANGLE: **12°**
- VALVE SPRING POCKET DIA.: **1.650"**
- VALVE SPRING INSTALL HEIGHT: **1.800"**
- HEAD STUD SIZE: **.493"**
- VALVE GUIDE OD: **.502"**
- VALVE JOB TYPE: **NEWEN CNC 5 ANGLE**

AIRFLOW SPECS

- CHAMBER SIZE: **70CC**
- INTAKE PORT VOLUME: **295CC**
- EXHAUST PORT VOLUME: **106CC**
- PORT TYPE: **CNC**

MATERIAL SPECS

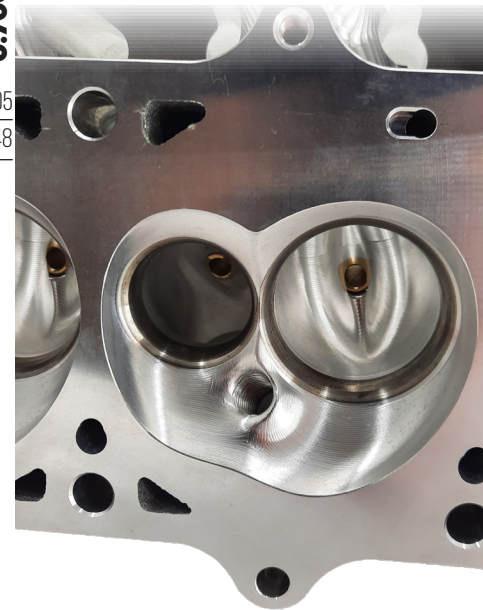
- CYLINDER HEAD MATERIAL: **A356-T6 ALUMINUM**
- INTAKE VALVE SEAT MATERIAL: **DUCTILE IRON**
- EXHAUST VALVE SEAT MATERIAL: **DUCTILE IRON**
- DECK THICKNESS: **.750"**
- ROCKER STAND TYPE: **MAST BILLET**
- ROCKER ARM TYPE: **OE LS7 1.8 OR AFTERMARKET**
- VALVE GUIDE MATERIAL: **PHOSPHOR BRONZE**

GENERAL SPECS

- ROCKER STAND: **INCLUDED**
- ROCKER STAND DOWELS: **INCLUDED**
- USES STOCK ROCKER BOLTS? **NO**
- ROCKER BOLTS: **NOT INCLUDED**
- HEAD BOLT QTY.: **6 BOLT STYLE**
- VALVE COVER RAIL HEIGHT: **+1/2"**
- CAN USE OE VALVE COVER? **YES**

CUSTOM OPTIONS AVAILABLE

- HEAD ASSEMBLY
- CHAMBER SOFTENING
- CUSTOM CHAMBER SIZING
- 1/2 HEAD STUD CLEARANCE
- COPPER INTAKE & EXHAUST VALVE SEATS



CYLINDER HEAD ADD-ONS

VALVE SPRING KITS

VS-LSX-100131 - PREMIUM DUAL VALVE SPRING & TITANIUM RETAINER KIT

VS-LSX-100134 - DUAL VALVE SPRING & TITANIUM RETAINER KIT - 0.750 LIFT

VS-UNV-100138 - DRAG RACE & MARINE 1.525 VALVE SPRING KIT - SOLID ROLLER LSX

VS-UNV-100139 - DRAG RACE & MARINE 1.525 VALVE SPRING KIT - SOLID ROLLER LSX - POLISHED

ROCKER KITS

RK-LS7-600269 - LS7 ROCKER KIT W/ CHE TRUNNION & ROCKER BOLTS

RK-LSX-981110 - JESEL ROCKER SYSTEM - LARGE BORE "INLINE PATTERN" - 1.7 RATIO

RK-LSX-600303 - JESEL ROCKER SYSTEM - LARGE BORE "INLINE PATTERN" - 1.8 RATIO

RK-LSX-600301 - JESEL SPORTSMAN STEEL ROCKER SYSTEM - LARGE BORE "INLINE PATTERN" - 1.7 RATIO

RK-LSX-600302 - JESEL SPORTSMAN STEEL ROCKER SYSTEM - LARGE BORE "INLINE PATTERN" - 1.8 RATIO

RK-LSX-981113 - JESEL SPORTSMAN STEEL ROCKER SYSTEM - LARGE BORE "JESEL PATTERN" - 1.7 RATIO

RK-LSX-981114 - JESEL SPORTSMAN STEEL ROCKER SYSTEM - LARGE BORE "JESEL PATTERN" - 1.8 RATIO

