

Quality Cumberland craftsmanship deserves the finest natural materials. A complete range of rich wood finishes, enduring metals, sumptuous leathers, glass colors spanning from vibrant to neutral, and one of the largest selections of stone options available form a thoughtfully designed palette for designers to create their own aesthetic statements.

Extensive, well-curated, and unsurpassed in our industry, our material offering is available on everything we make to ensure design continuity throughout a space.

### **On Selecting Finishes**

Finishes are shown in this guide as accurately as the limitations of the printing process allow. Order physical samples on [cumberlandfurniture.com](http://cumberlandfurniture.com), by calling 800 401 7877, or sending an email to [orders@cumberlandfurniture.com](mailto:orders@cumberlandfurniture.com).

Natural wood veneer and stone have variation in grain, color and veining as a natural characteristic. Cumberland cannot guarantee an exact match to printed or physical samples. See the Cumberland Price List for further details on each finish and application to specific product lines.

# Wood Finishes

## Maple Finishes

Our finish sample colors are shown on Maple. While Maple is the standard on all our products, other wood species may also be available.



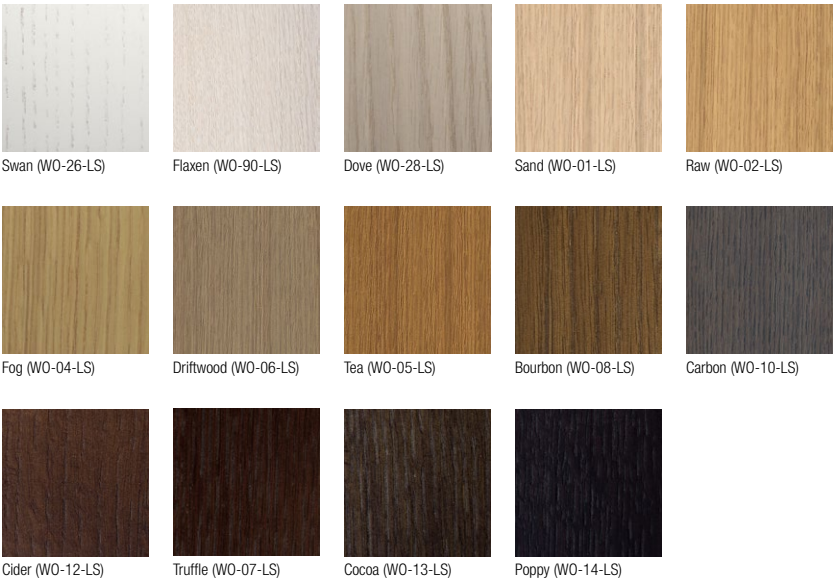
## Walnut Finishes

Walnut finishes are a premium option available on select products. Walnut is a very dark wood with more visible grain.



## Oak Finishes

White Oak finishes are a premium option available on select products. White Oak is a deeply grained wood with a rougher surface texture that features a lower sheen finish than our standard Maple finishes.



## Cerused Finish on Oak

To accentuate the deep grain of Rift White Oak, we have developed a hand-wiped, cerused low sheen finish, a premium option available on select products.



# Metal Finishes

We offer a versatile array of enduring metal finishes to suit any design style, ranging from stainless steel finishes to painted metal finishes.

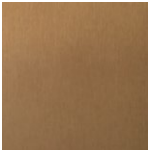
## Stainless Finishes



Satin Stainless (SSS)



Polished Stainless (PSS)

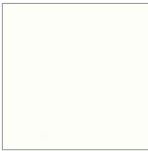


Statuary Bronze (STB)

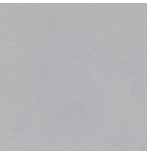


Polished Brass (PBR)

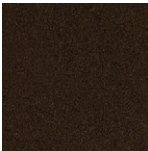
## Painted Metal Finishes



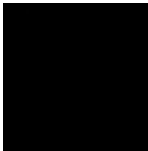
White Painted (WHT)



Silver Painted (SLV)



Dark Bronze Painted (DKB)



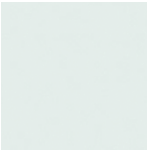
Black Painted (BLK)

## Back Painted Glass Finishes

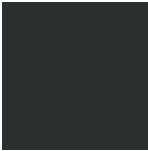
Painted glass allows timeless neutrals to be incorporated into any design. White Satin Glass is acid-etched on top, offering a “frosted” satiny finish that looks like sand-blasted glass.



W. Satin (AEGLPNT-01)



Ice (GLSPNT-03)



Annubis (GLSPNT-01)



Onyx (GLSPNT-12)

## Solid Surface

Non-porous and exceptionally durable, our solid surface is Corian® in Glacier White. Corian is available in an entire palette of colors from the manufacturer through our COM program.



Glacier White

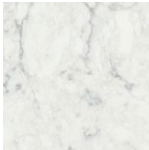
# Stones

Granite and marble stone are natural materials that vary in color and veining. Engineered stone is made to look and feel like natural stone but offers greater uniformity and durability. Both options can be polished for a reflective finish or honed for a matte, satin-smooth look and feel.

## Grade A



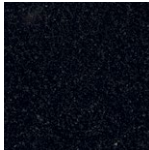
Silestone Miami White



LX Hausys Minuet Viatera



White Carrara Marble



Absolute Black Granite

## Grade B



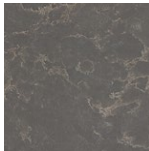
Wilsonart Q4045 Hamoa Quartz



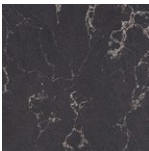
Silestone Coral Clay



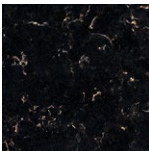
Silestone Cemento Spa



Wilsonart Q4032 Haldi Quartz



Caeserstone Vanilla Noir



Wilsonart Q4006 Xcaret Quartz

## Grade C



LX Hausys Adagio Gold



Silestone Kensho



Silestone Calypso