



PCI-TMC12AU/PEX-TMC12A Quick Start

v1.0, May 2019

What's in the box?

The package includes the following items:

PCI-TMC12AU

PEX-TMC12A



or



PCI-TMC12AU/PEX-TMC12A
x1

Quick Start x 1
(This Document)

CA-4002 D-Sub
Connector x 1

Related Information

- For more detailed information related to the user manual and software for UniDAQ Driver & SDK:
<http://ftp.icpdas.com/pub/cd/iocard/pci/napdos/pci/unidaq/>
- For more detailed information related to the hardware settings for PCI-TMC12A Series Card:
<http://ftp.icpdas.com/pub/cd/iocard/pci/napdos/pci/pci-tmc12a/manual/>
- CA-2002 Product Page (optional):
http://www.icpdas.com/products/Accessories/cable/cable_selection.htm

1 Installing Windows Driver

1) Download or locate the Windows driver.

The **UniDAQ driver** supports 32-/64-bit Windows XP/2003/2008/7/8/10. It is recommended that new users install this driver, which can be found in the <http://ftp.icpdas.com/pub/cd/iocard/pci/napdos/pci/unidaq/dll/driver/>

PCI-TMC12 Series Classic Driver supports Windows 98/NT/2K and 32-bit Windows XP/2003/2008/7. It is recommended this driver is installed by customers who have previously installed a PCI-TMC12 series card and are regular users. For more details, refer to: <http://ftp.icpdas.com/pub/cd/iocard/pci/napdos/pci/pci-tmc12a/manual/quickstart/classic/>

2) Click the “**Next>**” button to start the installation.

3) Check your DAQ Card is or not on supported list, then click the “**Next>**” button.

4) Select the installed folder, the default path is **C:\ICPDAS\UniDAQ**, confirm and click the “**Next>**” button.

5) Check your DAQ Card on list, then click the “**Next>**” button.

6) Click the “**Next>**” button on the Select Additional Tasks window.

7) Click the “**Next>**” button on the Download Information window.

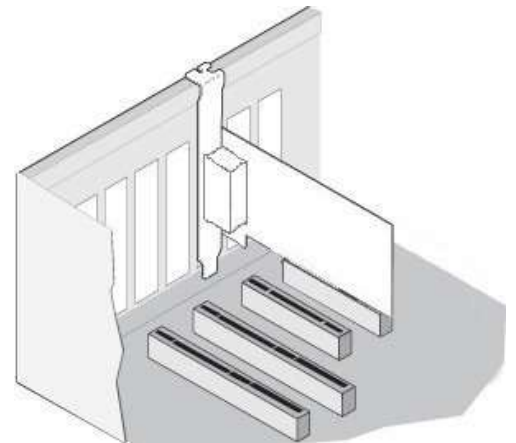
8) Select “**No, I will restart my computer later**” and then click the “**Finish**” button.

NOTE:

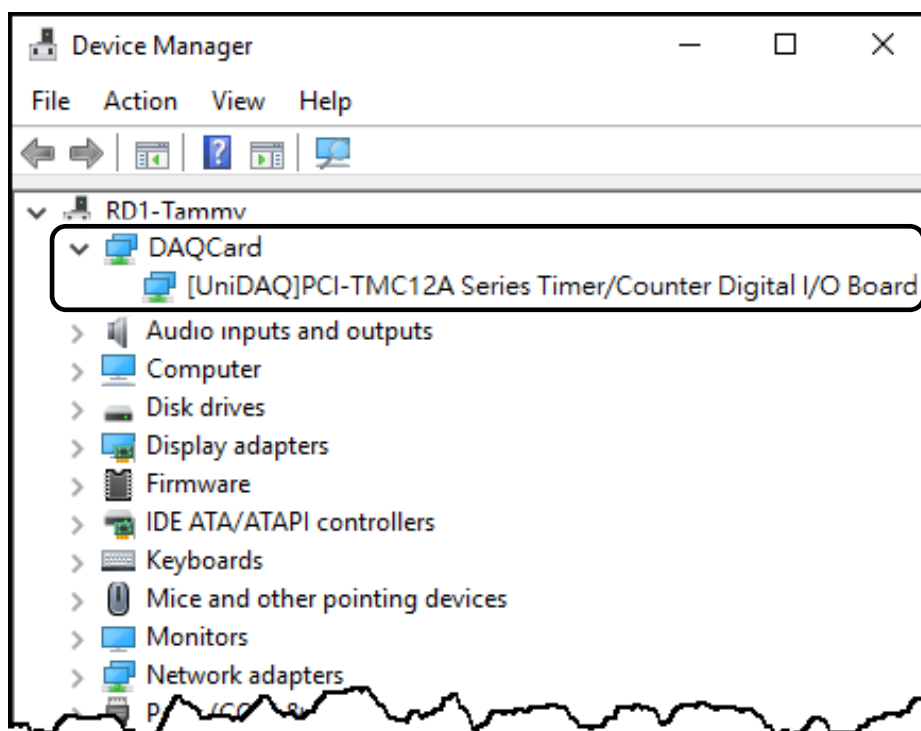
For more detailed information related to driver installation, refer to Chapter 2 “Starting” in the UniDAQ SDK user manual.

2 Installing Hardware on PC

- 1) Power off the Computer.
- 2) Remove all covers from the Computer.
- 3) Select an unused PCI /PCI Express slot.
- 4) Carefully insert the PCI-TMC12AU/ PEX-TMC12A Card into PCI/PCI Express slot.
- 5) Replace the Computer Covers.
- 6) Power on the Computer.
- 7) The operating system will automatically detect the new hardware and install the necessary drivers after reboot the PC.



- 8) Open the “**Device Manager**” to verify that the PCI-TMC12A Series Card has been correctly installed and is in the Device Manager, as illustrated on below.



4 Testing Board

➤ Prepare for device

- ☑ CA-2002 (optional) cable

1) Connect the **CON2** to **CON3** on board using the **CA-2002** cable.



2) Launch the **UniDAQ Utility** software.

If the UniDAQ Utility was installed in the default folder, it will be located at “**C:\ICPDAS\UniDAQ\Driver**”.



3) Confirm that the PCI-TMC12 Series Card has been successfully installed in the Host system.

NOTE: The device numbers start from 0.

4) Click the “**TEST**” button to start the test.

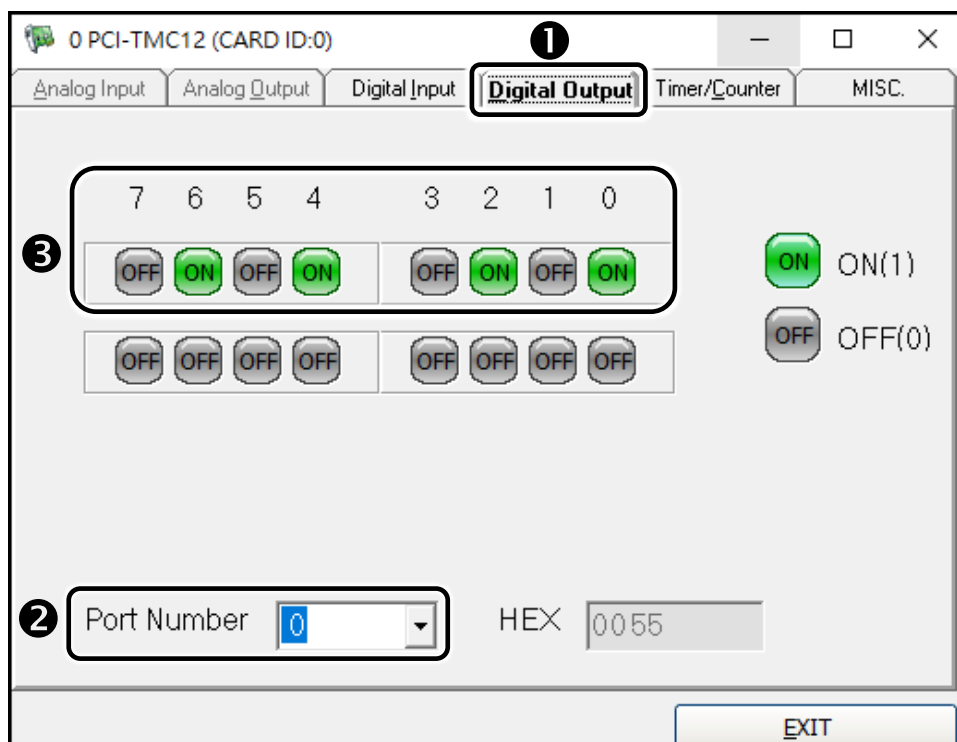


5) Check the results of the **Digital Input** and **Digital Output** functions test.

❶ Click the “**Digital Output**” tab.

❷ Select “**Port0**” from the “**Port Number**” drop-down options.

❸ Click the **DO channels 0, 2, 4 and 6** buttons.



- ④ Click the “**Digital Input**” tab.
- ⑤ Select “**Port0**” from the “**Port Number**” drop-down options.
- ⑥ The DI indicators will turn **black** when the corresponding **DO channels 0, 2, 4 and 6 are ON.**

