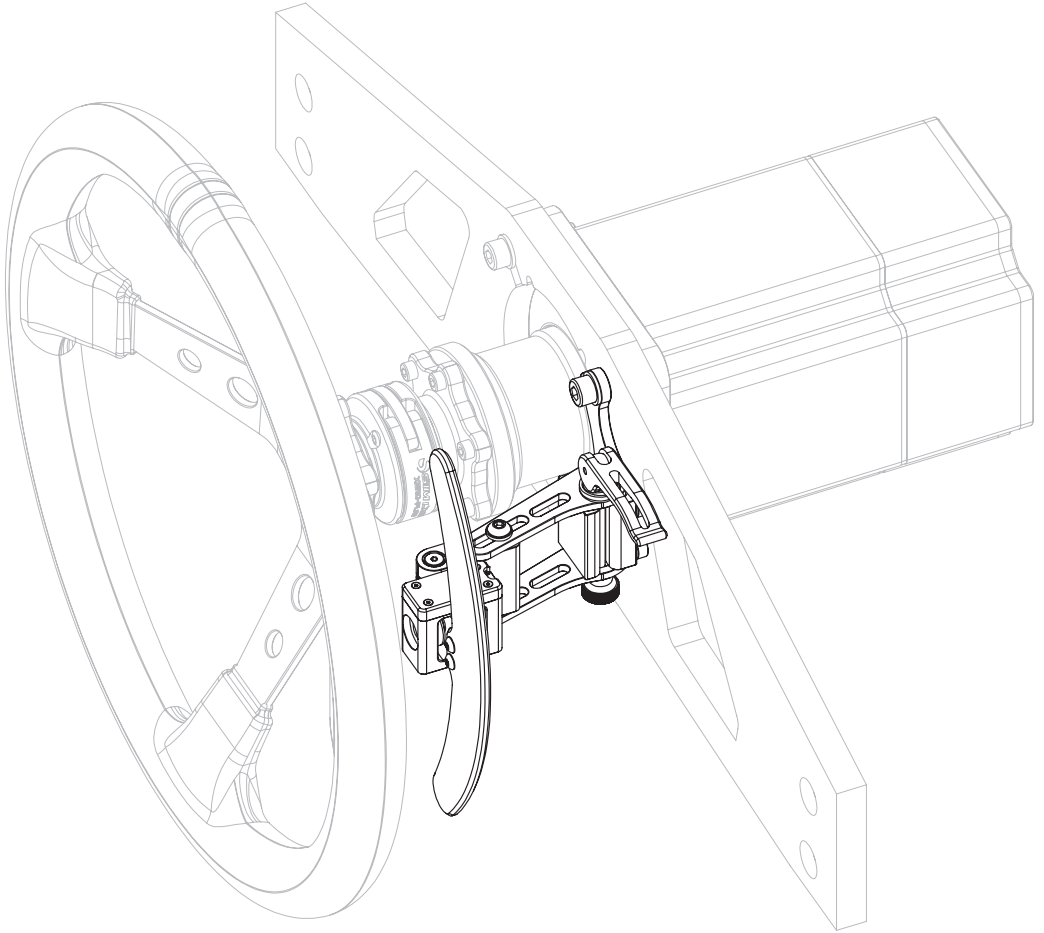


# **SIM LAB**

## INSTRUCTION MANUAL



## **PUSH/PULL SHIFTER**

**VERSION 1.04**

Last updated: 02-04-2024

# BEFORE YOU START:

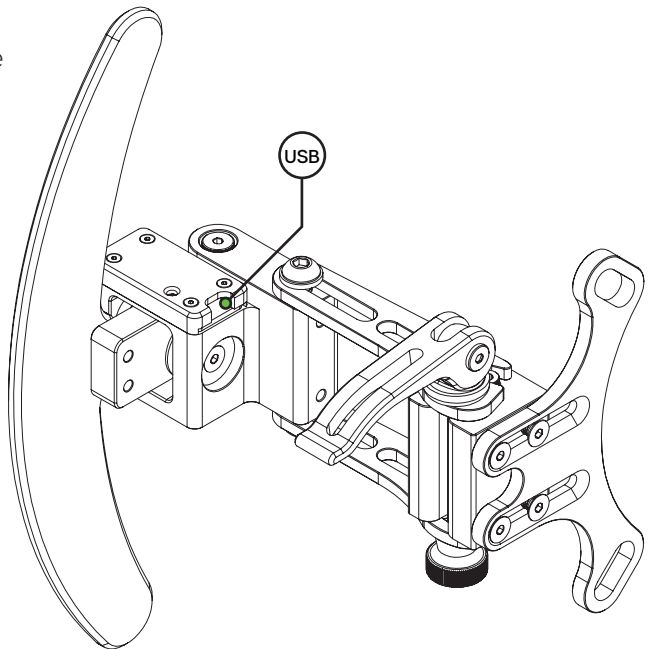
Thank you for your purchase. In this manual we will provide you with the means to get started using your new shifter!

Allowing you to shift rally style, you always know where your shifter is in relation to your wheel. Thanks to the quick disconnect lever it is easy to make adjustments. The quick disconnect lever allows for a very rigid solution while really locking down your preferred configuration.

## PUSH/PULL SHIFTER

### Features:

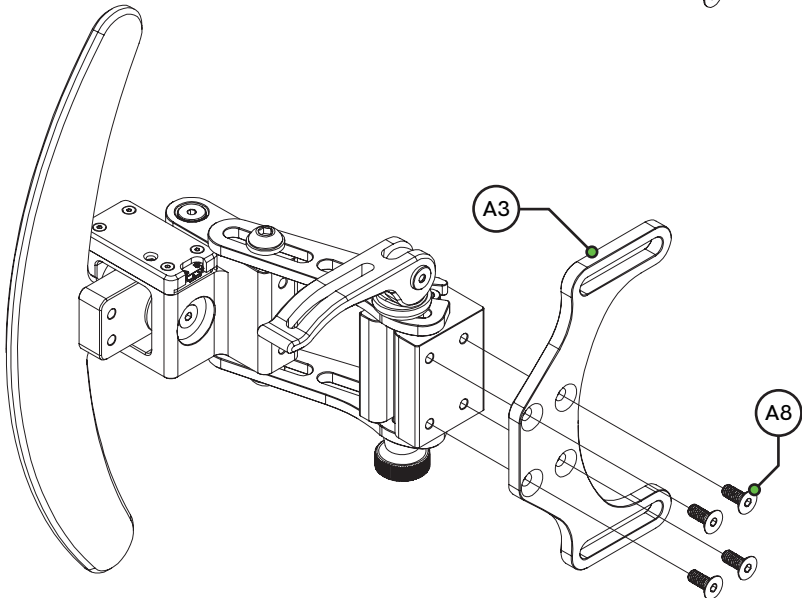
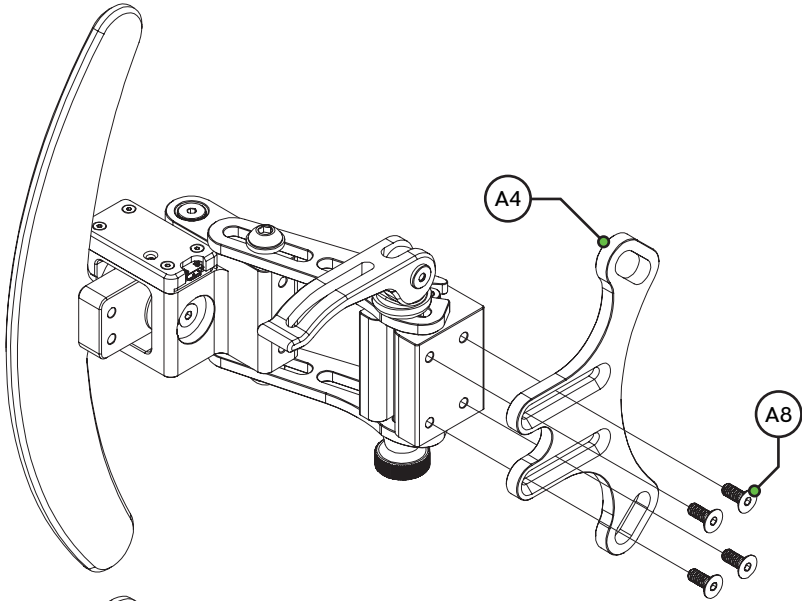
- Rally style shifting
- Support for different hardware
- Adjustable in length and angle
- Aluminum construction
- Hall-sensor activated
- Carbon fiber paddles
- Quick disconnect lever



# Preparation

Depending on your hardware; Fanatec (A3) or Simucube/ALPHA/MIGE (A4), a different mounting plate must be fitted.

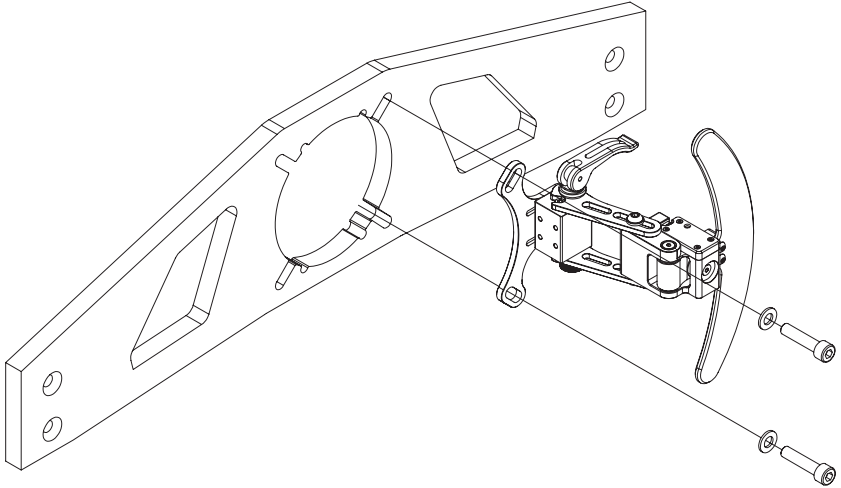
Mounting such a plate is very straightforward and uses four countersunk bolts.



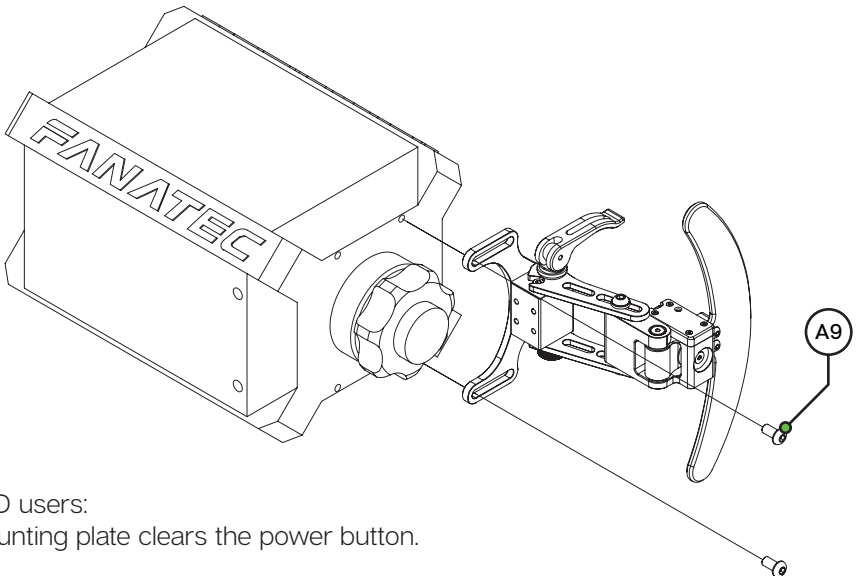
# Installation

The installation of the Push/Pull Shifter (PPS) is fairly straight forward. Loosen existing bolts on your motor and mount, use these to attach the adapter plate to your front mount.

X1-Pro owners can use the accessory mounting holes on the X1-Pro front mount.



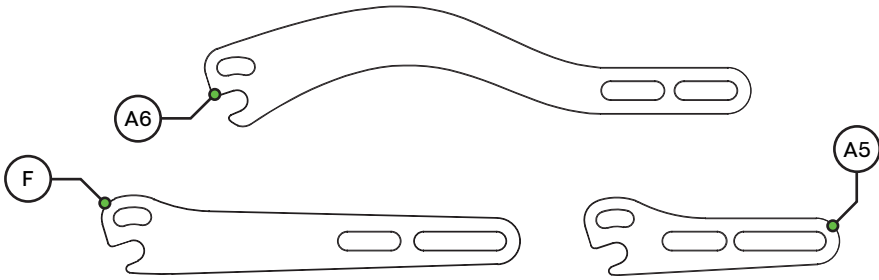
For Fanatec users, appropriate bolts (A9) are supplied.



\*CSL-DD users:  
The mounting plate clears the power button.

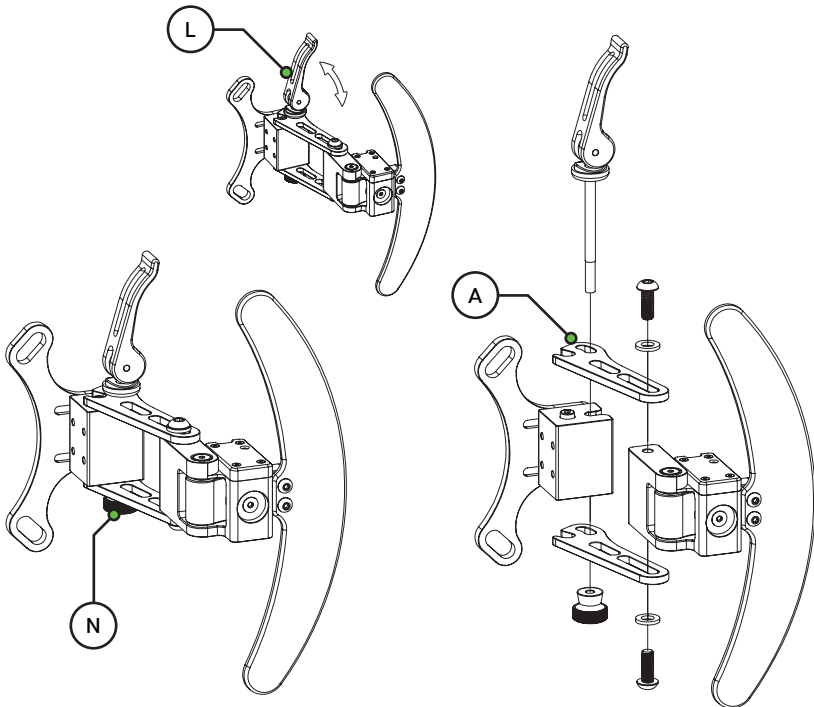
# Configuration

Depending on your setup, there might some configuration needed to make the PPS fit your setup. We included 3 different arms to be able to adjust the positioning of the paddle in relation to your wheel.

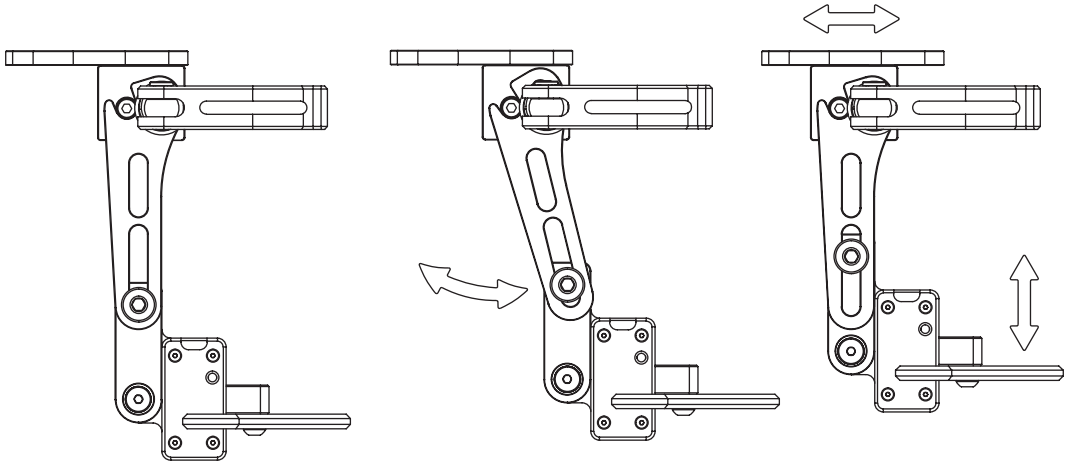


If arms (F) fitted out of the box need to be swapped, first rotate the lever (L) upwards and loosen the nut (N). Now you can disconnect the complete shifter body along with the arms and swap them with your preferred arms (A5/6).

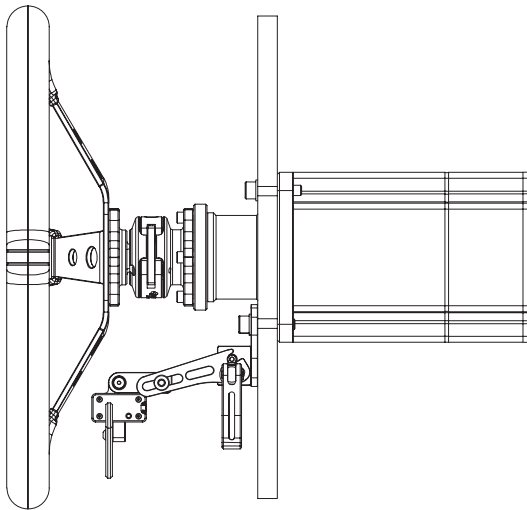
With the new arms in place, some tweaking is still possible to suit your needs. When re-assembling, don't tighten the nut (N) completely, the lever (L) will clamp down on the system to tighten everything. When there is still play after you have clamped down the lever, release the lever and adjust the tension of the nut and try again.



There are different means of adjustment possible, depending on the part.

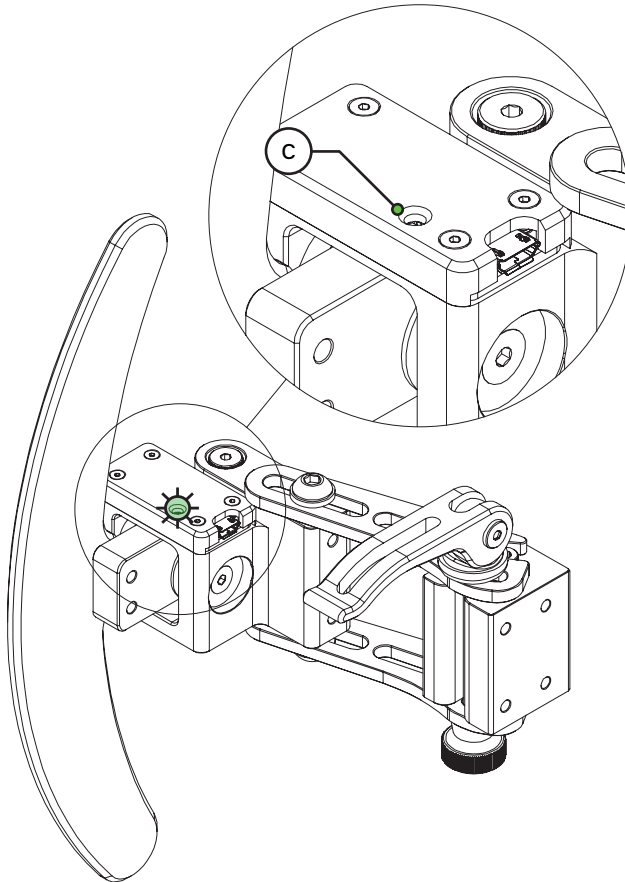


Most adjustments can be made loosening the bolts which hold the arms and rotating the locking lever upwards. Be sure to tighten bolts securely and double check after the first use if they are still tight. Here is how we achieved our setup to work with a deep dish wheel.



## Initial calibration

Press and hold the calibration button (C) until its LED starts blinking. Now the unit is in calibration mode. Shift up (*pull*) and down (*push*) a couple of times. When you are done, press the calibration button (C) one last time. Now the device has been calibrated and ready for use.



# Bill of materials

IN THE BOX			
#	Part	QTY	Note
A1	Push/Pull Shifter	1	
A2	USB-C cable	1	
A3	Fanatec mount	1	
A4	Simucube/Alpha/MIGE mount	1	
A5	Mount Arm M75-125	2	
A6	Mount Arm M125-185	2	
A7	Bolt M8 X 35 DIN 912	2	
A8	Bolt M4 X 10 DIN 7991	4	
A9	Bolt M6 X 12 DIN 7380	2	Use to mount unit to Fanatec.
A10	Bolt M4 X 10 DIN 7380	2	Use to mount paddle.
A11	Lock-Nut M8	2	
A12	Washer M8 DIN 125-A	2	To use with A8 and/or A11.
A13	Toolkit	1	Allen keys 2.5, 4 and 5mm.

## More information

If you still have some questions regarding assembly of this product or about the manual itself, please refer to our support department. They can be reached at:

[support@sim-lab.eu](mailto:support@sim-lab.eu)

Alternatively, we now have Discord servers where you can hang out or ask for help.

[www.sim-lab.eu/discord](http://www.sim-lab.eu/discord)

[Product page on the Sim-Lab website:](#)

