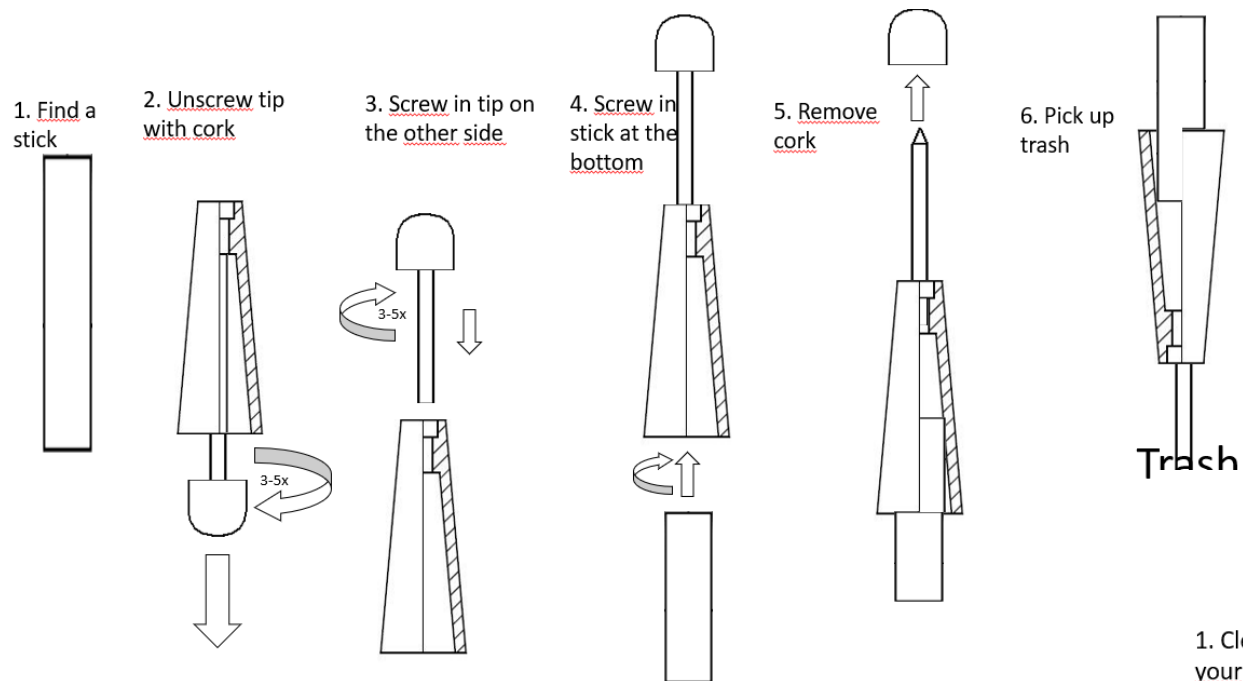


Manual – PiU / Pick It Up

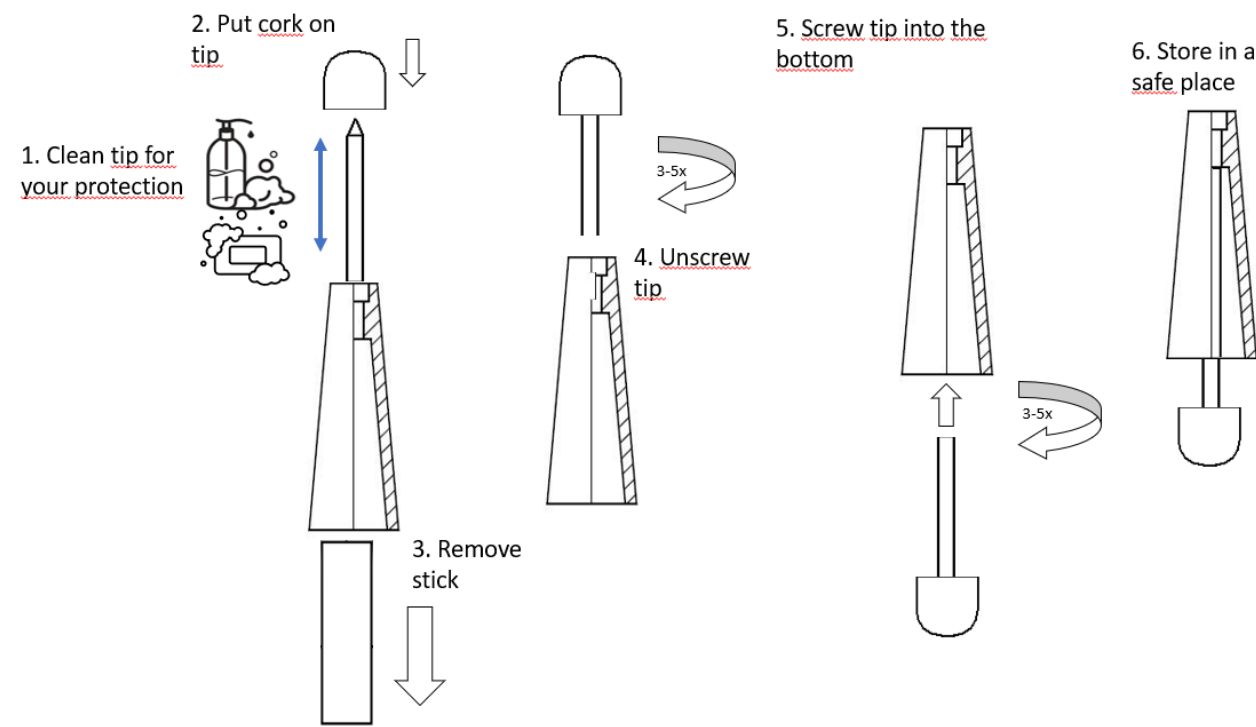
(1) Prepare your Pick!tUp



Good to know:

Cigarette butts take about 20 years to decompose and have about 4000 toxins. In the course of the decomposition process, they contaminate between 20-60 liters of groundwater.

(2) Storing the PiU after use



Wichtig:

- Always loosen the cork last (1) and attach it first (2) to avoid injury.
- **No liability due to improper use!**
- Give the environmental friend only to persons over 18 years.
- The PiU contains small parts – Keep out of reach of child under three years.

Safety instructions that must be observed when using Pick!tUp.

- Particularly important safety instructions are listed in these instructions. It is essential to observe these precautions to avoid accidents or damage.
- ATTENTION: Read all instructions carefully before using Pick!tUp. A failure to follow the instructions below may result in serious injury, poisoning or skin reactions. The term "wick" in the following refers to the pointed pin that is screwed into the Pick!tUp. The Pick!tUp is referred to as the "tool" in the following. When used properly, the cork acts as a „safety stopper“ and is labelled as such.
- Do not use as a weapon! Make sure under all circumstances that there is no risk of injury to third parties!
- KEEP THESE SAFETY INSTRUCTIONS IN A SAFE PLACE!
- Always ensure that the protective cork is intact. It must always be firmly attached to the pointed end of the wick during transport.

1) Place of use

- a) Make sure that the place of use is adequately lit. A poorly lit place of use increases the risk of accidents and injuries.

2) Safety of persons

- a) Keep out of the reach of children. The tool is not suitable for use by persons under 13 years of age.
- b) Consider the conditions of use and the intended use of the tool.
Use of the tool for other than its intended purpose (collecting rubbish) may lead to dangerous situations and cause serious accidents.
- c) Remain vigilant and observe your actions.
Do not use the tool when you are tired or under the influence of alcohol, drugs or medicines that impair concentration.
Watch yourself and those around you during every movement to avoid injury or accidents.
- d) Position and way of using the tool. Do not overestimate your abilities. Always maintain a stable and balanced posture to better control the tool in unexpected situations or in the event of a slip-up. Follow the instructions and sequence of operating steps given to you at the time of purchase. Unscrew the wick and remove the safety stopper only during use and make sure it is properly closed after each use (in this order: wash the wick, insert the cap and screw the wick into the cone).

- Support yourself with one leg when using the tool to increase accuracy and avoid uncontrolled slipping.

- Never point the pointed wick at yourself or anyone else.
- Never leave the assembled or unscrewed tool on the floor or unattended.
- Do not open several tools at the same time.

e) Safety of others

- When transporting, the tool should be closed and kept in a bag, case or pouch.
- Never pass or give the tool to another person without making sure that the safety stopper is screwed on and the safety catch is closed.
- Hand the tool to others, never throw it.
- Never run with the tool mounted.
- When using the tool near others, keep a safe distance at least equal to the length of the stick inserted in the cone, or at least 1m if necessary, so that others remain out of reach in the event of an unexpected fall.

f) Wear protective equipment when necessary.

- Wearing personal protective equipment when necessary, such as a dust mask or non-slip safety shoes (non-exhaustive list), reduces the risk of physical harm.

g) Wear appropriate clothing.

Wearing jewellery or loose clothing that could interfere with the proper use of the tool increases the risk of accidents.

h) Cleaning and maintenance

- Clean the wick of the tool after each use with a suitable soap or disinfectant to remove all traces and remains of debris.
- Avoid direct skin contact with the wick to avoid contact with hazardous, toxic or impure substances.
- Avoid direct contact with the wick after use, before washing and/or disinfecting it, to avoid skin reactions and/or injury or poisoning.
- Never use the tool if its components have been damaged by use or by contact with chemicals that alter the material.

3) Disposal

a) Recycle the picked up waste.

Pick!tUp consists partly of recyclable and/or reusable materials, which must be separated beforehand.

Pick!tUp will take back your tool to be recycled or reused. Contact our customer service.