

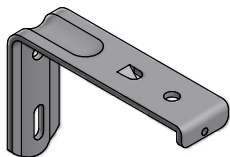


Vertical Slimline & Slimline Vogue
Wand Control
Fitting & Operating Instructions

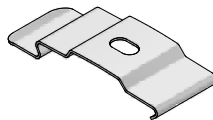
Vertical Slimline & Slimline Vogue Wand Control Fitting & Operating Instructions

Carefully unwrap the vertical blind and its associated brackets.

There are a number of bracket options for example face fix, top fix, screw fit or spring fit.



Face fix screw fit bracket



Top fix spring fit bracket

Fitting the Brackets.

The brackets should be located to allow for the depth of the louvres on the blind. The brackets should therefore be attached to the ceiling or window frame clear from any obstruction on a line 75mm (3") for 127mm louvres or 55mm (2 1/8") in the case of 89mm louvres.

For a blind up to 1 metre wide attach two brackets fitted approximately 40mm (1 1/2") from each end of the blind (fig. 1). Any intermediate brackets should be spaced evenly between these and as a general rule:

Up to 1m = 2 brackets.

1m and 2m = 3 brackets.

2m to 3m = 4 brackets.

Over 3m = 5 brackets.

Mark the bracket hole positions before drilling and plugging if necessary. Use two screws for a face fix bracket and one screw in a top fix bracket ensuring that the brackets are level. Remember to allow room for the blind to clear any obstacles when deployed, e.g. door or window handles.

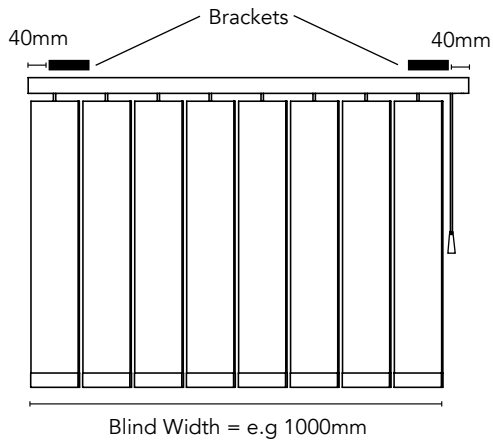


fig. 1

Fitting the Slimline Vogue fascia.

If the blind is a Slimline Vogue and it is intended to be installed with a fascia valance this should be installed at this stage before fitting the track.

The fascia valance is held in place using fascia clips and they need to be fitted first. These fascia clips fit into the grooves at the front and back of the track (the same grooves that the brackets use). As a guide fit as many fascia clips as the track uses brackets.

Hold the fascia clip and locate the back of the fascia clip into the back groove on the track. Now push the fascia clip down so that the front of the fascia clip clicks into the front groove on the track.

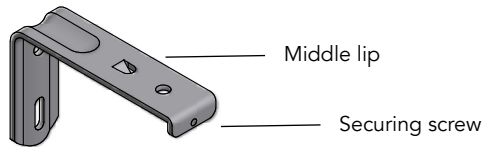
The fascia valance has a lengthwise rib running along its centre. This will fit into the locaters on the front of the fascia clips. Centralise the fascia and push fit the fascia valance into the fascia clips.

Note – Ensure the fascia is on the correct side of the track so it appears on the front when the track is fitted into the brackets.

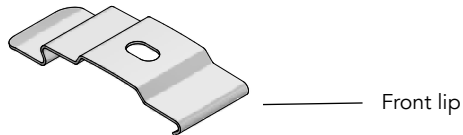
Fitting the Track.

The track should be fitted into the brackets keeping the operating wand on the side of the blind as ordered (LH/RH control).

If using a face fix screw fit bracket, locate the blind with the groove on the back of the headrail and fit it into the middle lip of the bracket. Now push the blind upwards until the headrail is sitting level on the bracket before tightening the securing screw from the front of the blind. Do not over tighten these screws, it is unnecessary and may damage the track.



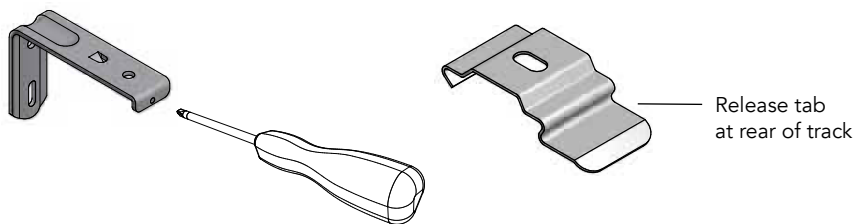
If using a top fix spring clip bracket you should push the track upwards then tilt away from you to locate the spring bracket front lip into the front groove on the track. Push upwards and the track will click into place.



Removing the Track.

With brackets that have retaining screws, unscrew the retaining screw sufficiently to clear the groove on the blind track. Repeat this with each bracket and the track will come away.

For spring clip brackets push upwards against the tab at the back of the bracket to release the blind from the bracket. Do this with each bracket and the track will come away.



Fitting the Louvres

Turn the hooks on the carriers of the track so that the slots are at 90 degrees to the track. Hang the louvres and ensure the seams are all facing the same direction. The blind is now ready to operate.

Operating the blind.

The Wand system has a single wand which is used for both operations. To traverse the louvres across the track grip the wand and slide the louvres across the track by walking the wand across the blind. To move the louvres in the opposite direction walk the wand in that direction. To rotate the louvres grip the wand and twist the wand to rotate the louvres. To rotate the louvres in the opposite direction reverse the direction of twist on the wand.

Note: Do not traverse the blinds with the louvres in the closed position always twist them 90 degrees to the track before operating.

Notes

Notes



Louvolite Customer Services Tel: 0161 882 5050 Email: sales@louvolite.com
Visit the Louvolite website to view the links to all of our assembly instructional videos
www.louvolite.com

Also find us on:

